



**300 SYLVAN AVE ENGLEWOOD CLIFFS, NJ 07632 | OFFICE FOR LEASE**

**INQUIRE FOR INFORMATION**

Anthony Cassano | Vice President  
P: 201.488.5800 x146 | [acassano@naihanson.com](mailto:acassano@naihanson.com)



**300 SYLVAN AVE**  
ENGLEWOOD CLIFFS, NJ 07632

# PROPERTY SUMMARY



## LOCATION DESCRIPTION

Corner of Charlotte Place and 9W.

## PROPERTY HIGHLIGHTS

- Property Type: Office
- Building Size: 30,000 SF
- Available Space: 3,485 SF
- Number of Floors: 3
- Ample Parking Onsite
- Asking Rent \$30.00 PSF Plus Tenant Electric

## OFFERING SUMMARY

Available SF:	3,485 SF
Lot Size:	30,000 SF
Building Size:	30,000 SF

## DEMOGRAPHICS

	1 MILE	3 MILES	5 MILES
Total Households	3,323	201,688	585,966
Total Population	9,094	532,486	1,583,684
Average HH Income	\$185,735	\$91,252	\$83,813



**300 SYLVAN AVE**  
ENGLEWOOD CLIFFS, NJ 07632

**ADDITIONAL  
PHOTOS**



**NAI James E. Hanson**  
COMMERCIAL REAL ESTATE SERVICES, WORLDWIDE

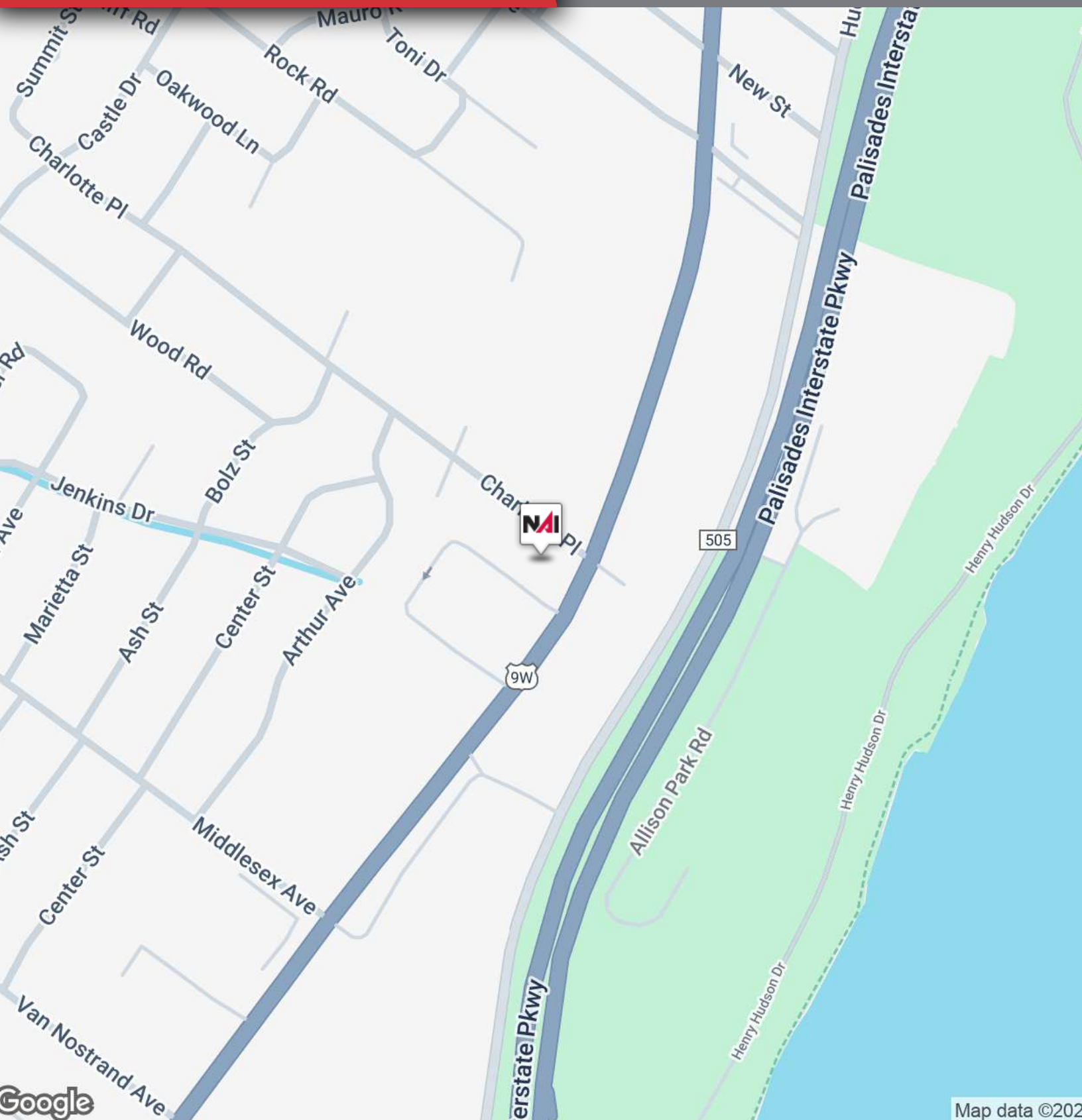
FOLLOW US: [f](#) [@](#) [t](#) [in](#) [v](#) | NJ Offices: Teterboro | Parsippany | [naihanson.com](http://naihanson.com) | Member of NAI Global with 325+ Offices Worldwide

THE INFORMATION CONTAINED HEREIN HAS BEEN OBTAINED FROM SOURCES CONSIDERED TO BE RELIABLE, BUT NO GUARANTEE OF ITS ACCURACY IS MADE BY NAI JAMES E. HANSON



**300 SYLVAN AVE**  
ENGLEWOOD CLIFFS, NJ 07632

**LOCATION  
MAP**



**NAI James E. Hanson**  
COMMERCIAL REAL ESTATE SERVICES, WORLDWIDE

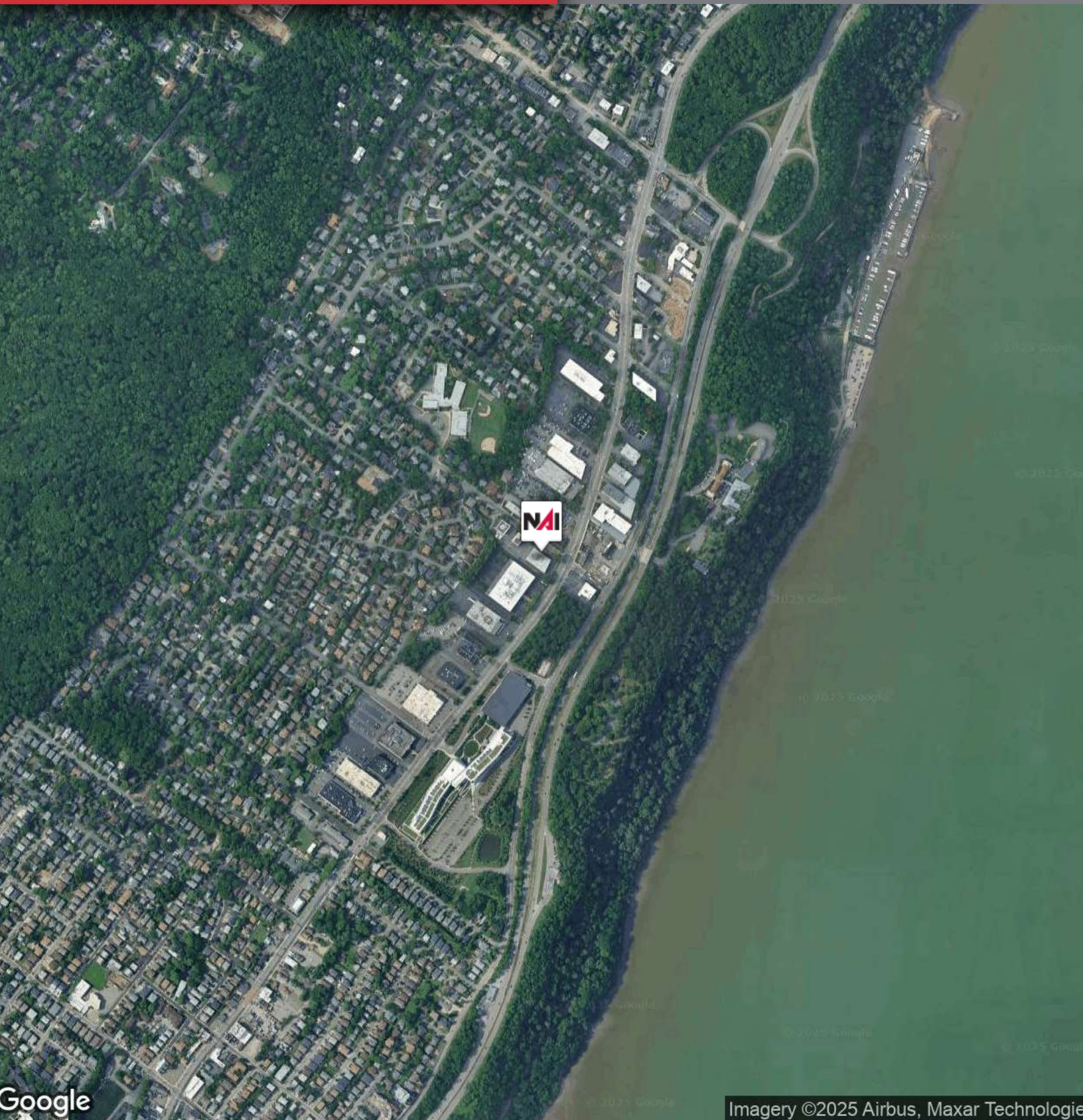
FOLLOW US: [f](#) [@](#) [v](#) [in](#) [y](#) | NJ Offices: Teterboro | Parsippany | [naihanson.com](http://naihanson.com) | Member of NAI Global with 325+ Offices Worldwide

THE INFORMATION CONTAINED HEREIN HAS BEEN OBTAINED FROM SOURCES CONSIDERED TO BE RELIABLE, BUT NO GUARANTEE OF ITS ACCURACY IS MADE BY NAI JAMES E. HANSON



300 SYLVAN AVE  
ENGLEWOOD CLIFFS, NJ 07632

AERIAL  
MAP



Imagery ©2025 Airbus, Maxar Technologies

**NAI** James E. Hanson  
COMMERCIAL REAL ESTATE SERVICES, WORLDWIDE

FOLLOW US: [f](#) [@](#) [t](#) [in](#) [v](#) | NJ Offices: Teterboro | Parsippany | [naihanson.com](http://naihanson.com) | Member of NAI Global with 325+ Offices Worldwide

THE INFORMATION CONTAINED HEREIN HAS BEEN OBTAINED FROM SOURCES CONSIDERED TO BE RELIABLE, BUT NO GUARANTEE OF ITS ACCURACY IS MADE BY NAI JAMES E. HANSON

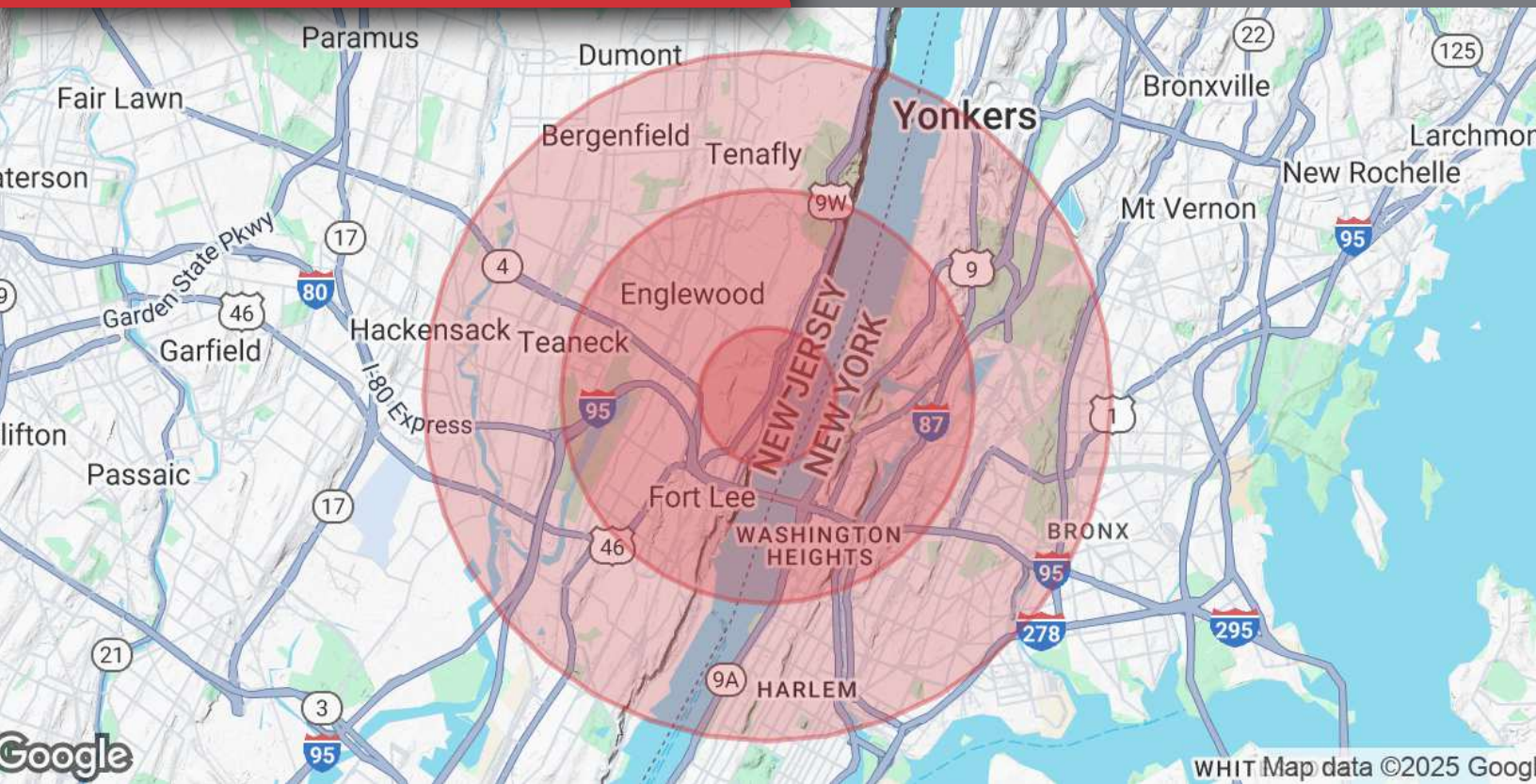


# 300 SYLVAN AVE

ENGLEWOOD CLIFFS, NJ 07632

# DEMOGRAPHICS

## MAP & REPORT



POPULATION	1 MILE	3 MILES	5 MILES
Total Population	9,094	532,486	1,583,684
Average Age	44	41	39
Average Age (Male)	43	39	38
Average Age (Female)	45	42	40

HOUSEHOLDS & INCOME	1 MILE	3 MILES	5 MILES
Total Households	3,323	201,688	585,966
# of Persons per HH	2.7	2.6	2.7
Average HH Income	\$185,735	\$91,252	\$83,813
Average House Value	\$927,035	\$583,447	\$595,424

Demographics data derived from AlphaMap



FOLLOW US: [f](#) [@](#) [t](#) [in](#) [v](#) | NJ Offices: Teterboro | Parsippany | [naihanson.com](http://naihanson.com) | Member of NAI Global with 325+ Offices Worldwide

THE INFORMATION CONTAINED HEREIN HAS BEEN OBTAINED FROM SOURCES CONSIDERED TO BE RELIABLE, BUT NO GUARANTEE OF ITS ACCURACY IS MADE BY NAI JAMES E. HANSON