



DOWNTOWN ASHEVILLE EXECUTIVE OFFICES

AVAILABLE FOR LEASE

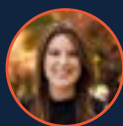
1 NORTH PACK SQUARE

ASHEVILLE, NC 28801



OFFERING SUMMARY

Lease Rate	Varies by Suite, \$600 to \$1000 FLAT
Building Size	140,598 SF
Property Type	Office
Last Renovated	2016
APN#	9649-40-4582



DOWNTOWN ASHEVILLE EXECUTIVE OFFICES

1 North Pack Square, Asheville, NC 28801



PROPERTY DESCRIPTION

The Biltmore Building offers quality that is nearly unmatched in downtown Asheville. The property is located in the heart of downtown Asheville, surrounded by all the wonderful amenities that Asheville has to offer. The Building has 24 secure access with lobby security during business hours. These suites have high-quality finishes with views of downtown and the surrounding mountains. There are multiple individual suites on the 3rd floor.

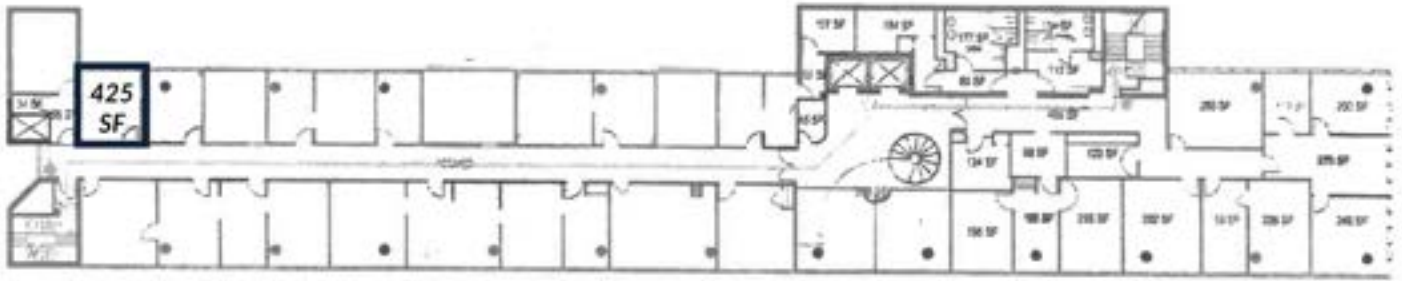
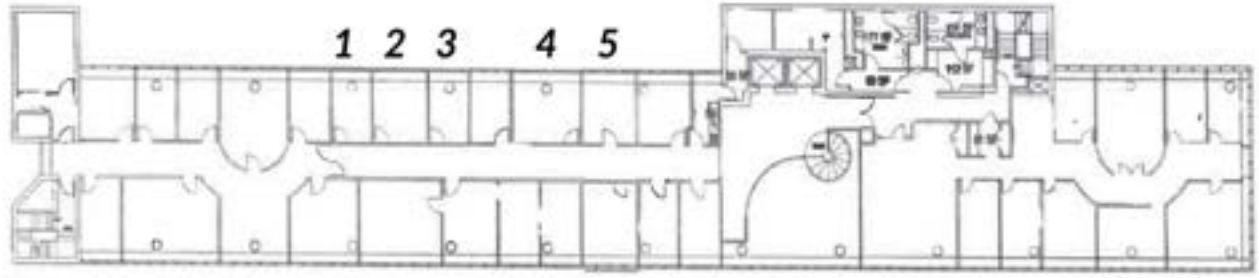
Directions: From I-240, Exit 5A, head Southward on Broadway for 0.4 miles, the property will be on the right, overlooking Pack Square.



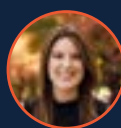
DOWNTOWN ASHEVILLE EXECUTIVE OFFICES

1 North Pack Square, Asheville, NC 28801

1. Suite 311
2. Suite 309
3. Suite 307
4. Suite 303
5. Suite 303 A



SUITE	SIZE (SF)	LEASE RATE	DESCRIPTION
100	2,466 SF	\$30 SF/YR	Executive Suite on the 1st Floor of the Biltmore Building in the heart of Downtown Asheville.
303	285 SF	\$925 per month	Executive Suite on the 3rd Floor of the Biltmore Building in the heart of Downtown Asheville.
303 A	210 SF	\$825 per month	Executive Suite on the 3rd Floor of the Biltmore Building in the heart of Downtown Asheville.
307	170 SF	\$600 per month	Executive Suite on the 3rd Floor of the Biltmore Building in the heart of Downtown Asheville.
309	210 SF	\$825 per month	Executive Suite on the 3rd Floor of the Biltmore Building in the heart of Downtown Asheville.
311	170 SF	\$600 per month	Executive Suite on the 3rd Floor of the Biltmore Building in the heart of Downtown Asheville.
425	179 SF	\$800 per month	Executive Suite on the 4th Floor of the Biltmore Building in the heart of Downtown Asheville.



Stephanie West, CCIM
COMMERCIAL BROKER
Cell: 828.712.2828
Office: 828.418.1278
SWEST@WHITNEYCRE.COM

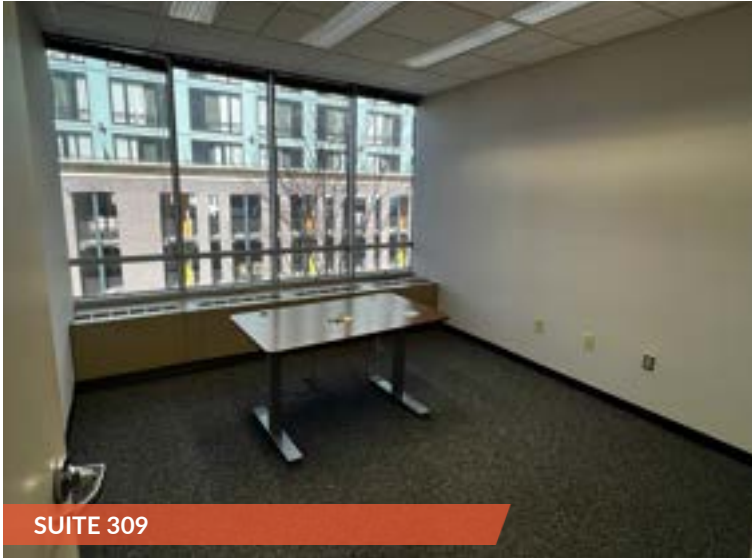


Austin Walker, CCIM, SIOR
COMMERCIAL BROKER
Cell: 828.713.0777
Office: 828.418.1278
AWALKER@WHITNEYCRE.COM

All information herein is obtained from sources deemed reliable but not guaranteed, and may change or be updated without notice.

DOWNTOWN ASHEVILLE EXECUTIVE OFFICES

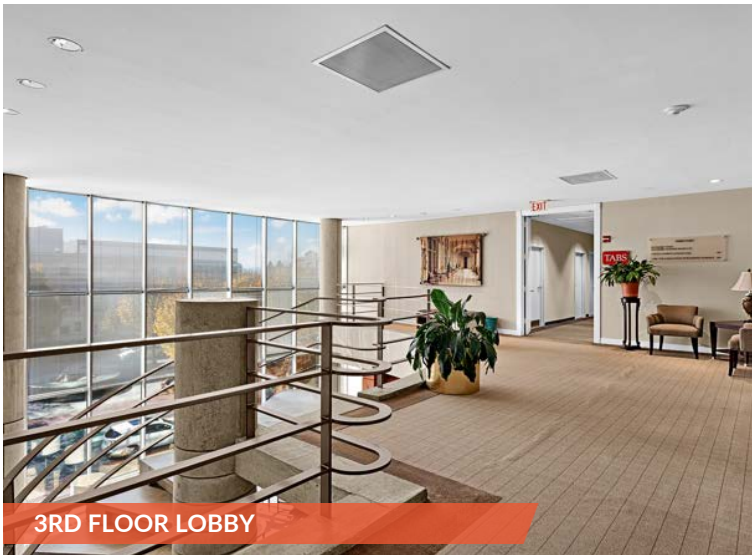
1 North Pack Square, Asheville, NC 28801



SUITE 309



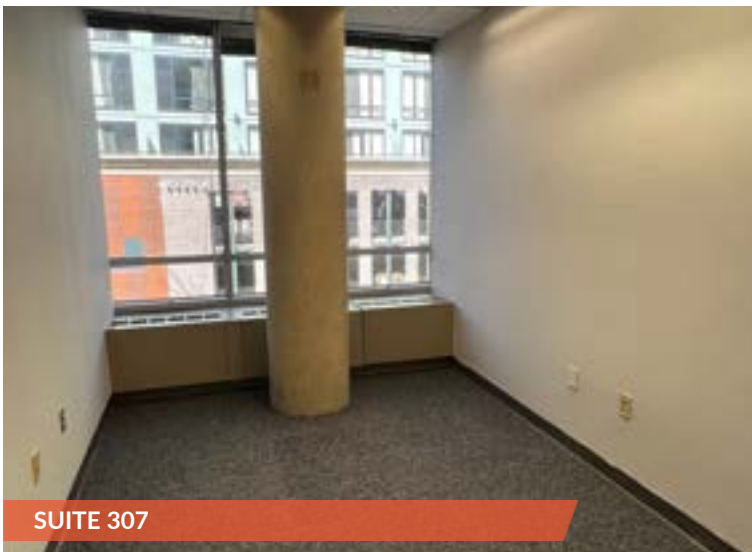
ENTRANCE



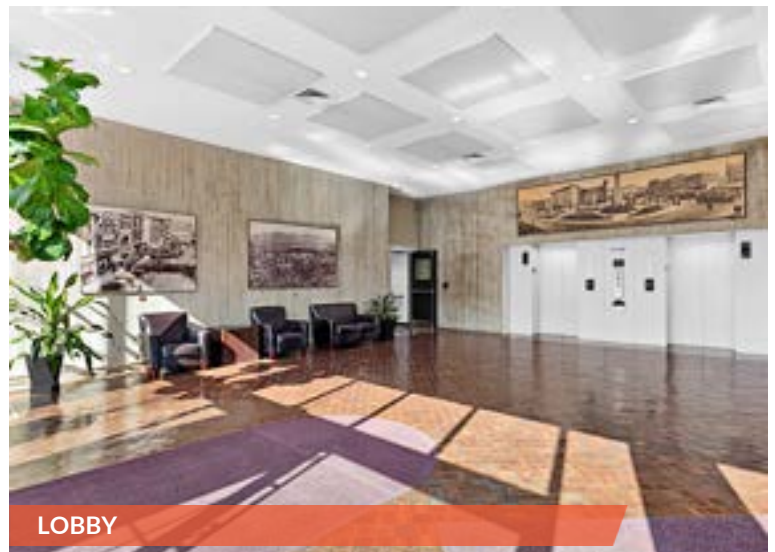
3RD FLOOR LOBBY



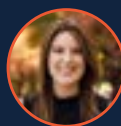
VIEW ACROSS PACK SQUARE



SUITE 307



LOBBY



Stephanie West, CCIM
COMMERCIAL BROKER
Cell: 828.712.2828
Office: 828.418.1278
SWEST@WHITNEYCRE.COM



Austin Walker, CCIM, SIOR
COMMERCIAL BROKER
Cell: 828.713.0777
Office: 828.418.1278
AWALKER@WHITNEYCRE.COM

All information herein is obtained from sources deemed reliable but not guaranteed, and may change or be updated without notice.