

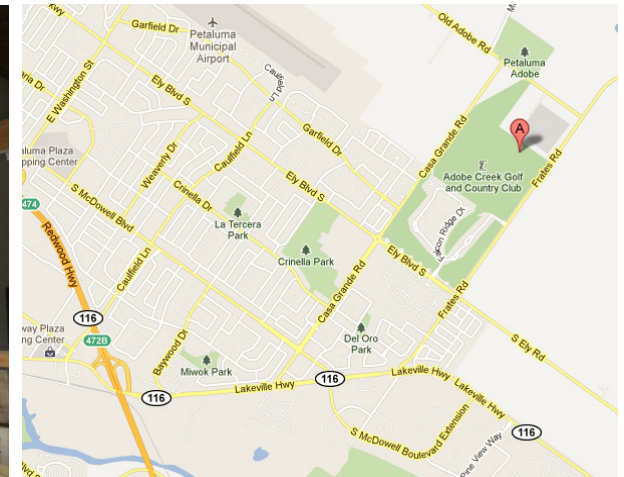
# Fully Equipped Restaurant for Lease

1901 Frates Road Petaluma, CA



## Property Summary

- ◆ 5,000 sq. ft. Restaurant Space Available
- ◆ Large, Fully Equipped Commercial Kitchen
- ◆ Outdoor Seating With Views
- ◆ Ample Parking
- ◆ Mediterranean Style With Exposed Wood Beams
- ◆ Base rent and lease terms negotiable
- ◆ The lease will include all furniture, fixtures and equipment including the existing smallwares and kitchen equipment.



Vicinity Map



KEEGAN & COPPIN  
COMPANY, INC.  
www.keegancoppin.com

**Shawn Johnson, Managing Partner/SIOR**  
1355 North Dutton Avenue, Santa Rosa, CA 95401  
(707) 528-1400 • Fax: (707) 524-1423  
Lic. #00835502  
SJohnson@KeeganCoppin.com

**Sara Wann, Senior Real Estate Advisor**  
1201 N. McDowell Blvd., Petaluma, CA 94954  
(707) 664-1400 • Fax: (707) 792-7336  
Lic. #01437146  
SWann@KeeganCoppin.com

# Fully Equipped Restaurant for Lease

1901 Frates Road Petaluma, CA

Population	1 Mile	3 Mile	5 Mile
2019 Total Population	6,658	40,639	65,150
2024 Population	6,667	41,372	65,995
Population Growth 2019-2024	0.14%	1.80%	1.30%
Average Age	39.5	40.8	41.5
Households	1 Mile	3 Mile	5 Mile
2019 Total Households	2,295	14,848	24,472
HH Growth 2019-2024	-0.31%	1.76%	1.17%
Median Household Income	\$ 98,591.00	\$ 90,667.00	\$ 90,629.00
Average Household Size	2.8	2.7	2.6
Housing	1 Mile	3 Mile	5 Mile
Median Home Value	\$ 676,547.00	\$ 626,760.00	\$ 661,681.00
Median Year Built	1984	1978	1978



Vicinity Map

Adobe Creek's superb location has something for everyone. Historic downtown Petaluma, with its carefully preserved Victorians and ironfront buildings offers a charming array of shops and boutiques. Petaluma Sky Ranch Airport and the new boat marina are both close by and there are dozens of world-class wineries just a short drive away. In less than one hour you can cross the Golden Gate Bridge and explore scenic San Francisco.



KEEGAN & COPPIN  
COMPANY, INC.  
www.keegancoppin.com

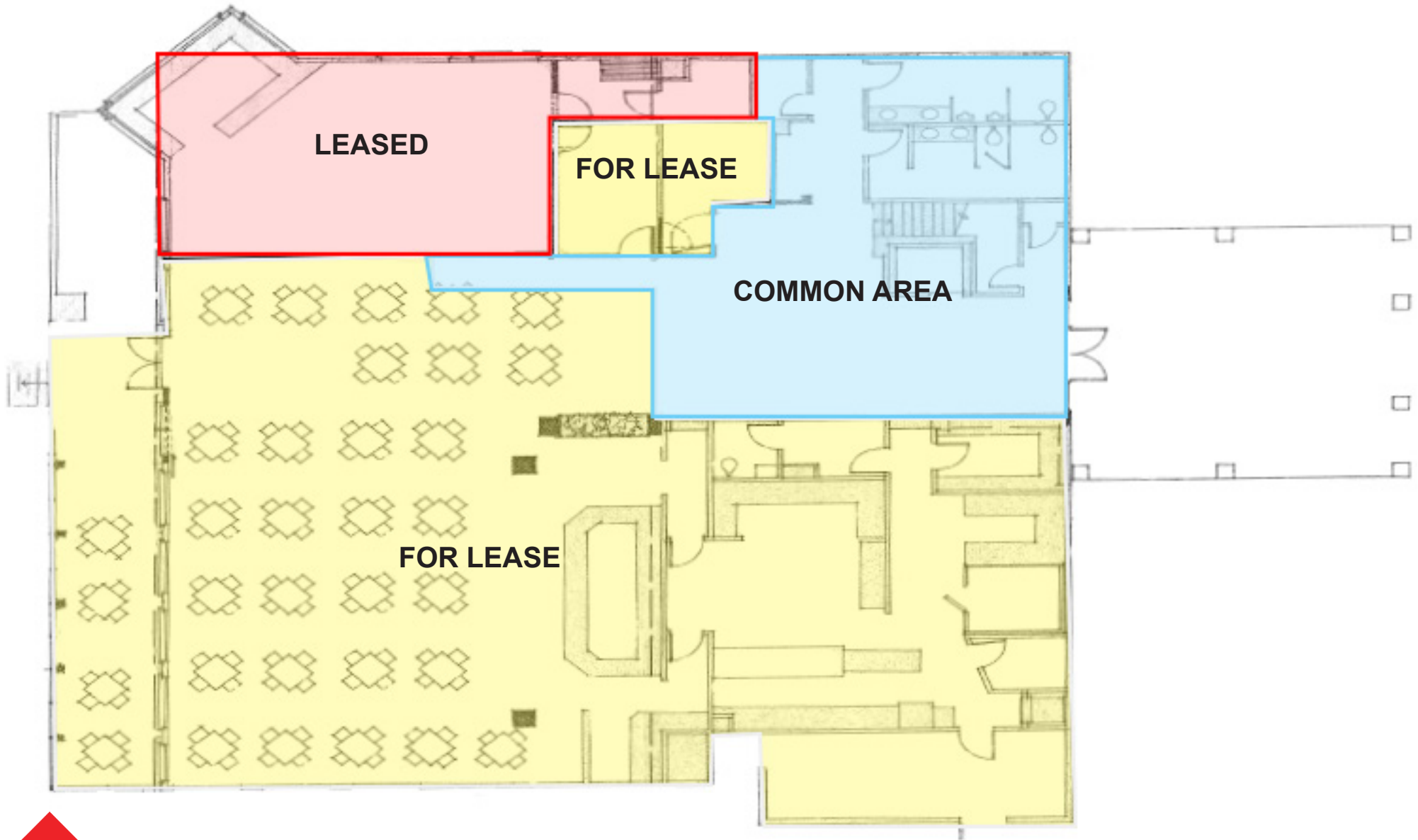
**Shawn Johnson, Managing Partner/SIOR**  
1355 North Duton Avenue, Santa Rosa, CA 95401  
(707) 528-1400 • Fax: (707) 524-1423  
Lic. #00835502  
SJohnson@KeeganCoppin.com

**Sara Wann, Senior Real Estate Advisor**  
1201 N. McDowell Blvd., Petaluma, CA 94954  
(707) 664-1400 • Fax: (707) 792-7336  
Lic. #01437146  
SWann@KeeganCoppin.com



# Fully Equipped Restaurant for Lease

1901 Frates Road Petaluma, CA



The above information, while not guaranteed, has been secured from sources we believe to be reliable. Submitted subject to error, change or withdrawal.  
An interested party should verify the status of the property and the information herein.



# Fully Equipped Restaurant for Lease

1901 Frates Road Petaluma, CA



KEEGAN & COPPIN  
COMPANY, INC.  
www.keegancoppin.com

**Shawn Johnson, Managing Partner/SIOR**  
1355 North Duton Avenue, Santa Rosa, CA 95401  
(707) 528-1400 • Fax: (707) 524-1423  
Lic. #00835502  
SJohnson@KeeganCoppin.com

**Sara Wann, Senior Real Estate Advisor**  
1201 N. McDowell Blvd., Petaluma, CA 94954  
(707) 664-1400 • Fax: (707) 792-7336  
Lic. #01437146  
SWann@KeeganCoppin.com