

# 3051 City View Drive

## Morgantown, West Virginia

### 10,000 Square Feet Industrial Building with Approximately 3,000 Square Feet of Finished Ground Floor Office Space

- + 3,000 Square Feet of Ground Floor Office Space Plus Additional Mezzanine Office Space
- + Site size is 1.08 acres secured by a chain-link fence
- + Pitched ceilings from 16' clear
- + Six (6) grade-level truck access doors (drive-through)
- + LED lighting and gas-fired suspended unit heaters in the warehouse
- + Featuring all paved parking areas

### Contact Us

**Robert P. Blackmore, SIOR**  
Salesperson  
+1 412 394 9829  
robert.blackmore@cbre.com

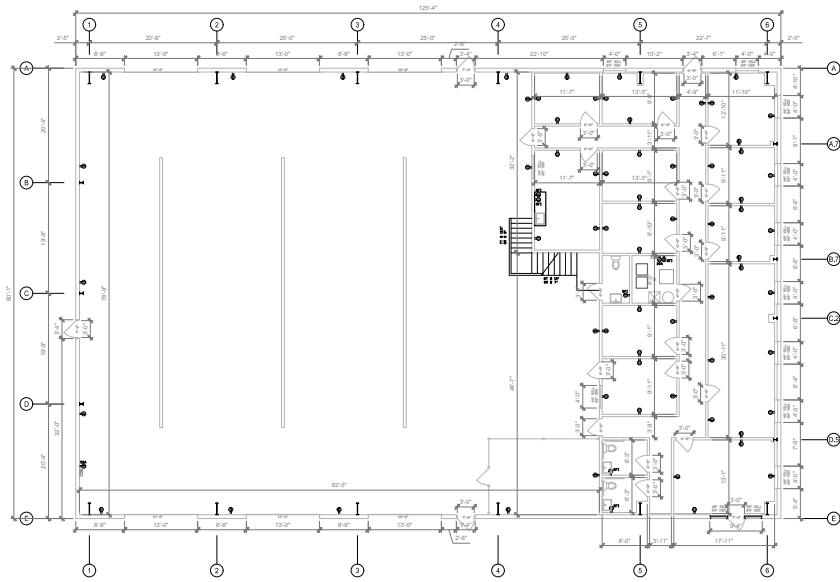
**David L. Durbin**  
Broker  
+1 304 720 8497  
707 Virginia Street, E., Suite 1420  
Charleston, WV 25301



3051 City View Drive  
Morgantown, WV 26501

For Sublease

## Floor Plan



Located approximately three (3) miles from I-79 in the Morgantown Industrial Park

- + The park is located within 500 miles of 40% of the US population and provides easy access to Interstate 68 and 79
- + Close proximity to the cities of Westover and Morgantown



© 2024 CBRE, Inc. All rights reserved. This information has been obtained from sources believed reliable, but has not been verified for accuracy or completeness. You should conduct a careful, independent investigation of the property and verify all information. Any reliance on this information is solely at your own risk. CBRE and the CBRE logo are service marks of CBRE, Inc. All other marks displayed on this document are the property of their respective owners, and the use of such logos does not imply any affiliation with or endorsement of CBRE. Photos herein are the property of their respective owners. Use of these images without the express written consent of the owner is prohibited.