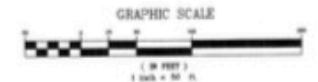




NEWELL TRUSTS

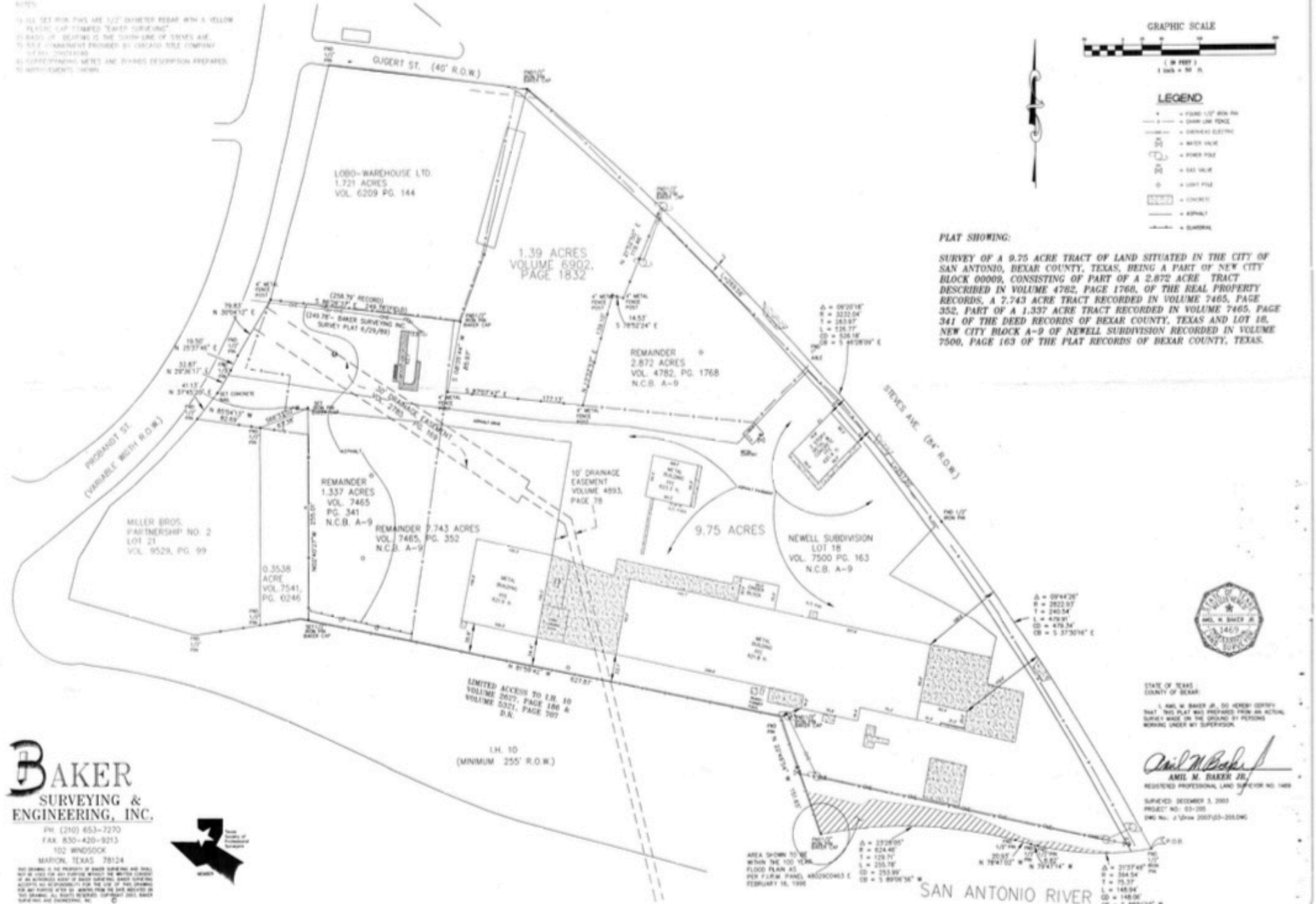
530 STEVES AVENUE | SAN ANTONIO, TX

- NOTES:
- 1) ALL SET POINTS ARE 1/2" DIAMETER PEGS WITH A YELLOW PLASTIC CAP STAMPED "BAKER SURVEYING"
 - 2) BASIS OF BEARINGS IS THE SOUTH LINE OF STEVE AVE.
 - 3) ALL DIMENSIONS PROVIDED BY CHICAGO TITLE COMPANY
 - 4) ALL DIMENSIONS TO CENTERLINE
 - 5) CORRESPONDING METES AND BOUNDS DESCRIPTION PREPARED TO APPOINTMENTS SHOWN



- LEGEND
- FOUND 1/2" DIA. PIN
 - CHAIN LINE
 - CHAIN LINE
 - METE VALUE
 - BENCH MARK
 - 6 IN. VALVE
 - 12 IN. VALVE
 - 18 IN. VALVE
 - 24 IN. VALVE
 - 30 IN. VALVE
 - 36 IN. VALVE
 - 42 IN. VALVE
 - 48 IN. VALVE
 - 54 IN. VALVE
 - 60 IN. VALVE
 - 66 IN. VALVE
 - 72 IN. VALVE
 - 78 IN. VALVE
 - 84 IN. VALVE
 - 90 IN. VALVE
 - 96 IN. VALVE
 - 102 IN. VALVE
 - 108 IN. VALVE
 - 114 IN. VALVE
 - 120 IN. VALVE
 - 126 IN. VALVE
 - 132 IN. VALVE
 - 138 IN. VALVE
 - 144 IN. VALVE
 - 150 IN. VALVE
 - 156 IN. VALVE
 - 162 IN. VALVE
 - 168 IN. VALVE
 - 174 IN. VALVE
 - 180 IN. VALVE
 - 186 IN. VALVE
 - 192 IN. VALVE
 - 198 IN. VALVE
 - 204 IN. VALVE
 - 210 IN. VALVE
 - 216 IN. VALVE
 - 222 IN. VALVE
 - 228 IN. VALVE
 - 234 IN. VALVE
 - 240 IN. VALVE
 - 246 IN. VALVE
 - 252 IN. VALVE
 - 258 IN. VALVE
 - 264 IN. VALVE
 - 270 IN. VALVE
 - 276 IN. VALVE
 - 282 IN. VALVE
 - 288 IN. VALVE
 - 294 IN. VALVE
 - 300 IN. VALVE
 - 306 IN. VALVE
 - 312 IN. VALVE
 - 318 IN. VALVE
 - 324 IN. VALVE
 - 330 IN. VALVE
 - 336 IN. VALVE
 - 342 IN. VALVE
 - 348 IN. VALVE
 - 354 IN. VALVE
 - 360 IN. VALVE
 - 366 IN. VALVE
 - 372 IN. VALVE
 - 378 IN. VALVE
 - 384 IN. VALVE
 - 390 IN. VALVE
 - 396 IN. VALVE
 - 402 IN. VALVE
 - 408 IN. VALVE
 - 414 IN. VALVE
 - 420 IN. VALVE
 - 426 IN. VALVE
 - 432 IN. VALVE
 - 438 IN. VALVE
 - 444 IN. VALVE
 - 450 IN. VALVE
 - 456 IN. VALVE
 - 462 IN. VALVE
 - 468 IN. VALVE
 - 474 IN. VALVE
 - 480 IN. VALVE
 - 486 IN. VALVE
 - 492 IN. VALVE
 - 498 IN. VALVE
 - 504 IN. VALVE
 - 510 IN. VALVE
 - 516 IN. VALVE
 - 522 IN. VALVE
 - 528 IN. VALVE
 - 534 IN. VALVE
 - 540 IN. VALVE
 - 546 IN. VALVE
 - 552 IN. VALVE
 - 558 IN. VALVE
 - 564 IN. VALVE
 - 570 IN. VALVE
 - 576 IN. VALVE
 - 582 IN. VALVE
 - 588 IN. VALVE
 - 594 IN. VALVE
 - 600 IN. VALVE
 - 606 IN. VALVE
 - 612 IN. VALVE
 - 618 IN. VALVE
 - 624 IN. VALVE
 - 630 IN. VALVE
 - 636 IN. VALVE
 - 642 IN. VALVE
 - 648 IN. VALVE
 - 654 IN. VALVE
 - 660 IN. VALVE
 - 666 IN. VALVE
 - 672 IN. VALVE
 - 678 IN. VALVE
 - 684 IN. VALVE
 - 690 IN. VALVE
 - 696 IN. VALVE
 - 702 IN. VALVE
 - 708 IN. VALVE
 - 714 IN. VALVE
 - 720 IN. VALVE
 - 726 IN. VALVE
 - 732 IN. VALVE
 - 738 IN. VALVE
 - 744 IN. VALVE
 - 750 IN. VALVE
 - 756 IN. VALVE
 - 762 IN. VALVE
 - 768 IN. VALVE
 - 774 IN. VALVE
 - 780 IN. VALVE
 - 786 IN. VALVE
 - 792 IN. VALVE
 - 798 IN. VALVE
 - 804 IN. VALVE
 - 810 IN. VALVE
 - 816 IN. VALVE
 - 822 IN. VALVE
 - 828 IN. VALVE
 - 834 IN. VALVE
 - 840 IN. VALVE
 - 846 IN. VALVE
 - 852 IN. VALVE
 - 858 IN. VALVE
 - 864 IN. VALVE
 - 870 IN. VALVE
 - 876 IN. VALVE
 - 882 IN. VALVE
 - 888 IN. VALVE
 - 894 IN. VALVE
 - 900 IN. VALVE
 - 906 IN. VALVE
 - 912 IN. VALVE
 - 918 IN. VALVE
 - 924 IN. VALVE
 - 930 IN. VALVE
 - 936 IN. VALVE
 - 942 IN. VALVE
 - 948 IN. VALVE
 - 954 IN. VALVE
 - 960 IN. VALVE
 - 966 IN. VALVE
 - 972 IN. VALVE
 - 978 IN. VALVE
 - 984 IN. VALVE
 - 990 IN. VALVE
 - 996 IN. VALVE
 - 1002 IN. VALVE
 - 1008 IN. VALVE
 - 1014 IN. VALVE
 - 1020 IN. VALVE
 - 1026 IN. VALVE
 - 1032 IN. VALVE
 - 1038 IN. VALVE
 - 1044 IN. VALVE
 - 1050 IN. VALVE
 - 1056 IN. VALVE
 - 1062 IN. VALVE
 - 1068 IN. VALVE
 - 1074 IN. VALVE
 - 1080 IN. VALVE
 - 1086 IN. VALVE
 - 1092 IN. VALVE
 - 1098 IN. VALVE
 - 1104 IN. VALVE
 - 1110 IN. VALVE
 - 1116 IN. VALVE
 - 1122 IN. VALVE
 - 1128 IN. VALVE
 - 1134 IN. VALVE
 - 1140 IN. VALVE
 - 1146 IN. VALVE
 - 1152 IN. VALVE
 - 1158 IN. VALVE
 - 1164 IN. VALVE
 - 1170 IN. VALVE
 - 1176 IN. VALVE
 - 1182 IN. VALVE
 - 1188 IN. VALVE
 - 1194 IN. VALVE
 - 1200 IN. VALVE
 - 1206 IN. VALVE
 - 1212 IN. VALVE
 - 1218 IN. VALVE
 - 1224 IN. VALVE
 - 1230 IN. VALVE
 - 1236 IN. VALVE
 - 1242 IN. VALVE
 - 1248 IN. VALVE
 - 1254 IN. VALVE
 - 1260 IN. VALVE
 - 1266 IN. VALVE
 - 1272 IN. VALVE
 - 1278 IN. VALVE
 - 1284 IN. VALVE
 - 1290 IN. VALVE
 - 1296 IN. VALVE
 - 1302 IN. VALVE
 - 1308 IN. VALVE
 - 1314 IN. VALVE
 - 1320 IN. VALVE
 - 1326 IN. VALVE
 - 1332 IN. VALVE
 - 1338 IN. VALVE
 - 1344 IN. VALVE
 - 1350 IN. VALVE
 - 1356 IN. VALVE
 - 1362 IN. VALVE
 - 1368 IN. VALVE
 - 1374 IN. VALVE
 - 1380 IN. VALVE
 - 1386 IN. VALVE
 - 1392 IN. VALVE
 - 1398 IN. VALVE
 - 1404 IN. VALVE
 - 1410 IN. VALVE
 - 1416 IN. VALVE
 - 1422 IN. VALVE
 - 1428 IN. VALVE
 - 1434 IN. VALVE
 - 1440 IN. VALVE
 - 1446 IN. VALVE
 - 1452 IN. VALVE
 - 1458 IN. VALVE
 - 1464 IN. VALVE
 - 1470 IN. VALVE
 - 1476 IN. VALVE
 - 1482 IN. VALVE
 - 1488 IN. VALVE
 - 1494 IN. VALVE
 - 1500 IN. VALVE
 - 1506 IN. VALVE
 - 1512 IN. VALVE
 - 1518 IN. VALVE
 - 1524 IN. VALVE
 - 1530 IN. VALVE
 - 1536 IN. VALVE
 - 1542 IN. VALVE
 - 1548 IN. VALVE
 - 1554 IN. VALVE
 - 1560 IN. VALVE
 - 1566 IN. VALVE
 - 1572 IN. VALVE
 - 1578 IN. VALVE
 - 1584 IN. VALVE
 - 1590 IN. VALVE
 - 1596 IN. VALVE
 - 1602 IN. VALVE
 - 1608 IN. VALVE
 - 1614 IN. VALVE
 - 1620 IN. VALVE
 - 1626 IN. VALVE
 - 1632 IN. VALVE
 - 1638 IN. VALVE
 - 1644 IN. VALVE
 - 1650 IN. VALVE
 - 1656 IN. VALVE
 - 1662 IN. VALVE
 - 1668 IN. VALVE
 - 1674 IN. VALVE
 - 1680 IN. VALVE
 - 1686 IN. VALVE
 - 1692 IN. VALVE
 - 1698 IN. VALVE
 - 1704 IN. VALVE
 - 1710 IN. VALVE
 - 1716 IN. VALVE
 - 1722 IN. VALVE
 - 1728 IN. VALVE
 - 1734 IN. VALVE
 - 1740 IN. VALVE
 - 1746 IN. VALVE
 - 1752 IN. VALVE
 - 1758 IN. VALVE
 - 1764 IN. VALVE
 - 1770 IN. VALVE
 - 1776 IN. VALVE
 - 1782 IN. VALVE
 - 1788 IN. VALVE
 - 1794 IN. VALVE
 - 1800 IN. VALVE
 - 1806 IN. VALVE
 - 1812 IN. VALVE
 - 1818 IN. VALVE
 - 1824 IN. VALVE
 - 1830 IN. VALVE
 - 1836 IN. VALVE
 - 1842 IN. VALVE
 - 1848 IN. VALVE
 - 1854 IN. VALVE
 - 1860 IN. VALVE
 - 1866 IN. VALVE
 - 1872 IN. VALVE
 - 1878 IN. VALVE
 - 1884 IN. VALVE
 - 1890 IN. VALVE
 - 1896 IN. VALVE
 - 1902 IN. VALVE
 - 1908 IN. VALVE
 - 1914 IN. VALVE
 - 1920 IN. VALVE
 - 1926 IN. VALVE
 - 1932 IN. VALVE
 - 1938 IN. VALVE
 - 1944 IN. VALVE
 - 1950 IN. VALVE
 - 1956 IN. VALVE
 - 1962 IN. VALVE
 - 1968 IN. VALVE
 - 1974 IN. VALVE
 - 1980 IN. VALVE
 - 1986 IN. VALVE
 - 1992 IN. VALVE
 - 1998 IN. VALVE
 - 2004 IN. VALVE
 - 2010 IN. VALVE
 - 2016 IN. VALVE
 - 2022 IN. VALVE
 - 2028 IN. VALVE
 - 2034 IN. VALVE
 - 2040 IN. VALVE
 - 2046 IN. VALVE
 - 2052 IN. VALVE
 - 2058 IN. VALVE
 - 2064 IN. VALVE
 - 2070 IN. VALVE
 - 2076 IN. VALVE
 - 2082 IN. VALVE
 - 2088 IN. VALVE
 - 2094 IN. VALVE
 - 2100 IN. VALVE
 - 2106 IN. VALVE
 - 2112 IN. VALVE
 - 2118 IN. VALVE
 - 2124 IN. VALVE
 - 2130 IN. VALVE
 - 2136 IN. VALVE
 - 2142 IN. VALVE
 - 2148 IN. VALVE
 - 2154 IN. VALVE
 - 2160 IN. VALVE
 - 2166 IN. VALVE
 - 2172 IN. VALVE
 - 2178 IN. VALVE
 - 2184 IN. VALVE
 - 2190 IN. VALVE
 - 2196 IN. VALVE
 - 2202 IN. VALVE
 - 2208 IN. VALVE
 - 2214 IN. VALVE
 - 2220 IN. VALVE
 - 2226 IN. VALVE
 - 2232 IN. VALVE
 - 2238 IN. VALVE
 - 2244 IN. VALVE
 - 2250 IN. VALVE
 - 2256 IN. VALVE
 - 2262 IN. VALVE
 - 2268 IN. VALVE
 - 2274 IN. VALVE
 - 2280 IN. VALVE
 - 2286 IN. VALVE
 - 2292 IN. VALVE
 - 2298 IN. VALVE
 - 2304 IN. VALVE
 - 2310 IN. VALVE
 - 2316 IN. VALVE
 - 2322 IN. VALVE
 - 2328 IN. VALVE
 - 2334 IN. VALVE
 - 2340 IN. VALVE
 - 2346 IN. VALVE
 - 2352 IN. VALVE
 - 2358 IN. VALVE
 - 2364 IN. VALVE
 - 2370 IN. VALVE
 - 2376 IN. VALVE
 - 2382 IN. VALVE
 - 2388 IN. VALVE
 - 2394 IN. VALVE
 - 2400 IN. VALVE
 - 2406 IN. VALVE
 - 2412 IN. VALVE
 - 2418 IN. VALVE
 - 2424 IN. VALVE
 - 2430 IN. VALVE
 - 2436 IN. VALVE
 - 2442 IN. VALVE
 - 2448 IN. VALVE
 - 2454 IN. VALVE
 - 2460 IN. VALVE
 - 2466 IN. VALVE
 - 2472 IN. VALVE
 - 2478 IN. VALVE
 - 2484 IN. VALVE
 - 2490 IN. VALVE
 - 2496 IN. VALVE
 - 2502 IN. VALVE
 - 2508 IN. VALVE
 - 2514 IN. VALVE
 - 2520 IN. VALVE
 - 2526 IN. VALVE
 - 2532 IN. VALVE
 - 2538 IN. VALVE
 - 2544 IN. VALVE
 - 2550 IN. VALVE
 - 2556 IN. VALVE
 - 2562 IN. VALVE
 - 2568 IN. VALVE
 - 2574 IN. VALVE
 - 2580 IN. VALVE
 - 2586 IN. VALVE
 - 2592 IN. VALVE
 - 2598 IN. VALVE
 - 2604 IN. VALVE
 - 2610 IN. VALVE
 - 2616 IN. VALVE
 - 2622 IN. VALVE
 - 2628 IN. VALVE
 - 2634 IN. VALVE
 - 2640 IN. VALVE
 - 2646 IN. VALVE
 - 2652 IN. VALVE
 - 2658 IN. VALVE
 - 2664 IN. VALVE
 - 2670 IN. VALVE
 - 2676 IN. VALVE
 - 2682 IN. VALVE
 - 2688 IN. VALVE
 - 2694 IN. VALVE
 - 2700 IN. VALVE
 - 2706 IN. VALVE
 - 2712 IN. VALVE
 - 2718 IN. VALVE
 - 2724 IN. VALVE
 - 2730 IN. VALVE
 - 2736 IN. VALVE
 - 2742 IN. VALVE
 - 2748 IN. VALVE
 - 2754 IN. VALVE
 - 2760 IN. VALVE
 - 2766 IN. VALVE
 - 2772 IN. VALVE
 - 2778 IN. VALVE
 - 2784 IN. VALVE
 - 2790 IN. VALVE
 - 2796 IN. VALVE
 - 2802 IN. VALVE
 - 2808 IN. VALVE
 - 2814 IN. VALVE
 - 2820 IN. VALVE
 - 2826 IN. VALVE
 - 2832 IN. VALVE
 - 2838 IN. VALVE
 - 2844 IN. VALVE
 - 2850 IN. VALVE
 - 2856 IN. VALVE
 - 2862 IN. VALVE
 - 2868 IN. VALVE
 - 2874 IN. VALVE
 - 2880 IN. VALVE
 - 2886 IN. VALVE
 - 2892 IN. VALVE
 - 2898 IN. VALVE
 - 2904 IN. VALVE
 - 2910 IN. VALVE
 - 2916 IN. VALVE
 - 2922 IN. VALVE
 - 2928 IN. VALVE
 - 2934 IN. VALVE
 - 2940 IN. VALVE
 - 2946 IN. VALVE
 - 2952 IN. VALVE
 - 2958 IN. VALVE
 - 2964 IN. VALVE
 - 2970 IN. VALVE
 - 2976 IN. VALVE
 - 2982 IN. VALVE
 - 2988 IN. VALVE
 - 2994 IN. VALVE
 - 3000 IN. VALVE

PLAT SHOWING:
 SURVEY OF A 9.75 ACRE TRACT OF LAND SITUATED IN THE CITY OF SAN ANTONIO, BEXAR COUNTY, TEXAS, BEING A PART OF NEW CITY BLOCK 00009, CONSISTING OF PART OF A 2.872 ACRE TRACT DESCRIBED IN VOLUME 4782, PAGE 1760, OF THE REAL PROPERTY RECORDS, A 7.743 ACRE TRACT RECORDED IN VOLUME 7465, PAGE 352, PART OF A 1.337 ACRE TRACT RECORDED IN VOLUME 7465, PAGE 341 OF THE DEED RECORDS OF BEXAR COUNTY, TEXAS AND LOT 18, NEW CITY BLOCK A-9 OF NEWELL SUBDIVISION RECORDED IN VOLUME 7500, PAGE 163 OF THE PLAT RECORDS OF BEXAR COUNTY, TEXAS.



BAKER
 SURVEYING &
 ENGINEERING, INC.

PH. (210) 653-7270
 FAX. 830-420-9213
 102 WINDSOCK
 MARION, TEXAS 78124

NOT BEING IN THE POSSESSION OF BAKER SURVEYING AND ENGINEERING, INC. THIS PLAT WAS PREPARED FROM AN ACTUAL SURVEY MADE ON THE GROUND BY PLATTING WORKING UNDER MY SUPERVISION.

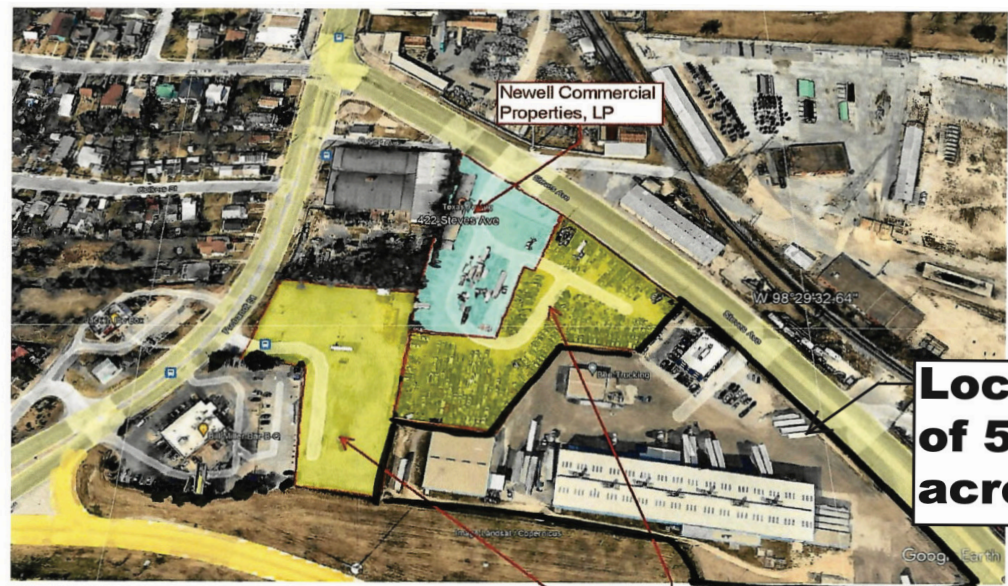
Amil M. Baker Jr.
 AMIL M. BAKER JR.
 REGISTERED PROFESSIONAL LAND SURVEYOR NO. 1488

SURVEYED: DECEMBER 3, 2003
 PROJECT NO.: 03-100
 Dwg. No.: 2 (Sheet 200303-200403)

FOR LEASE

- Great visibility
- Easy access to IH-10, IH-35 and IH-37
- Outstanding traffic counts
- All utilities available
- Proximity to Southtown, Blue Star Arts, and Lone Star
- Buildings: Total ±61,250 Square Feet
 - ±41,250 Sq. Ft. Overhead Crane Served Metal Building
 - ±10,000 Sq. Ft. Metal Building
 - ±3,000 Sq. Ft. Block Building
 - ±7,000 Sq. Ft. Two story Office Building
- Zoning: IDZ-RIO4 (with grandfathered, continuing non-conforming use)
- Land Size: ±5.75 acres // ±246,854 sq ft
- Possible Uses:
 - Industrial Outdoor Storage
 - Transportation & Logistics Hub
 - Light Manufacturing
 - Semi Truck // Tractor Trailer Storage
 - Boat & RV Storage
 - Mixed Use Development

****Price Available Upon Request****



Portion of Property owned by the SNS Property Trust
FBO Gilbert Robert Triesch, III, the SNS Property Trust
FBO Justin Newell Triesch, and the Winifred Newell
Irrevocable John R. Newell Family Trust





Copyright © 2023 Newell Trusts. All rights reserved.

The information contained herein was obtained from sources believed reliable; however, the Newell Trusts make no guarantees, warranties, or representations as to the completeness or accuracy thereof. The presentation of this property is submitted subject to errors, omissions, change of terms, price, and/or conditions, prior sale or lease, and/or withdrawal without notice. All Floor plans, property lines, areas, and dimensions are approximate and for illustration purposes only.