

# Retail Space

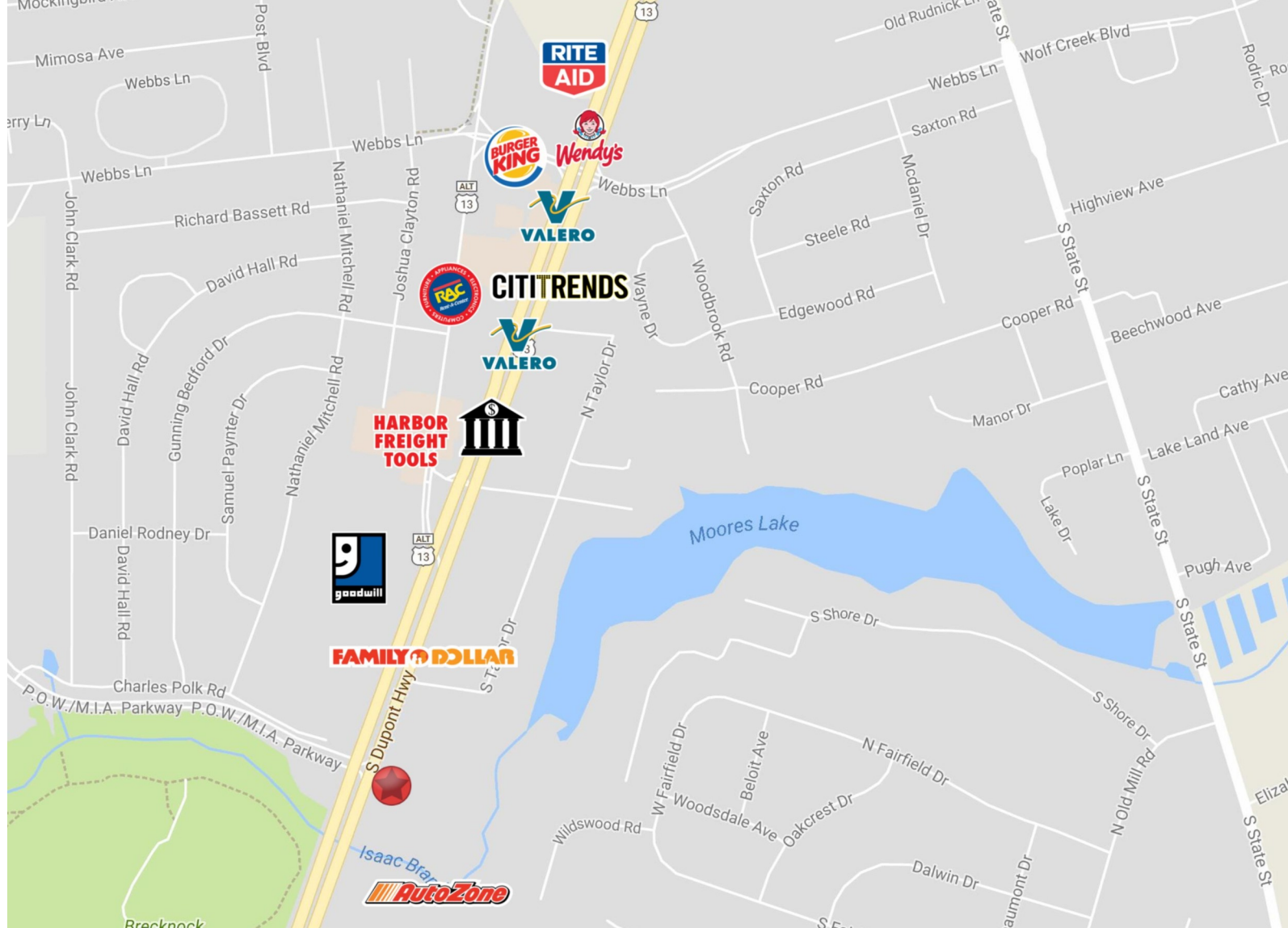
Proposed Retail  
1965 DuPont Hwy  
Dover, DE 19901

Charles  
Rodriguez  
302-674-3400  
ccrod1@aol.com



46 South State Street  
Dover, Delaware 19901  
302-674-3400

www.randrcommercialrealty.com



## Property Information

- ⇒ Proposed retail development in Dover
- ⇒ Located across from Rodney Village Shopping Center at a lighted intersection on S. DuPont Hwy
- ⇒ Suites Available from 1,200-10,000 SF
- ⇒ Pad Sites Available from 1-3 Acres

⇒ Traffic Counts: 46,035 AADT 2014

Demographics	1 Mile	3 Miles	5 Miles
Population	7,798	44,649	78,335
Median Income	\$55,679	\$52,475	\$53,281
Households	3,032	16,955	29,257

All information contained herein is believed to be accurate, however was obtained from third parties and R & R Commercial Realty, Inc. does not warrant as to the accuracy submitted, subject to changes or modification without notice. Listing Broker represents the sellers interest.

# Proposed Retail Space For Lease

1965 S. DuPont Hwy, Dover, DE 19901

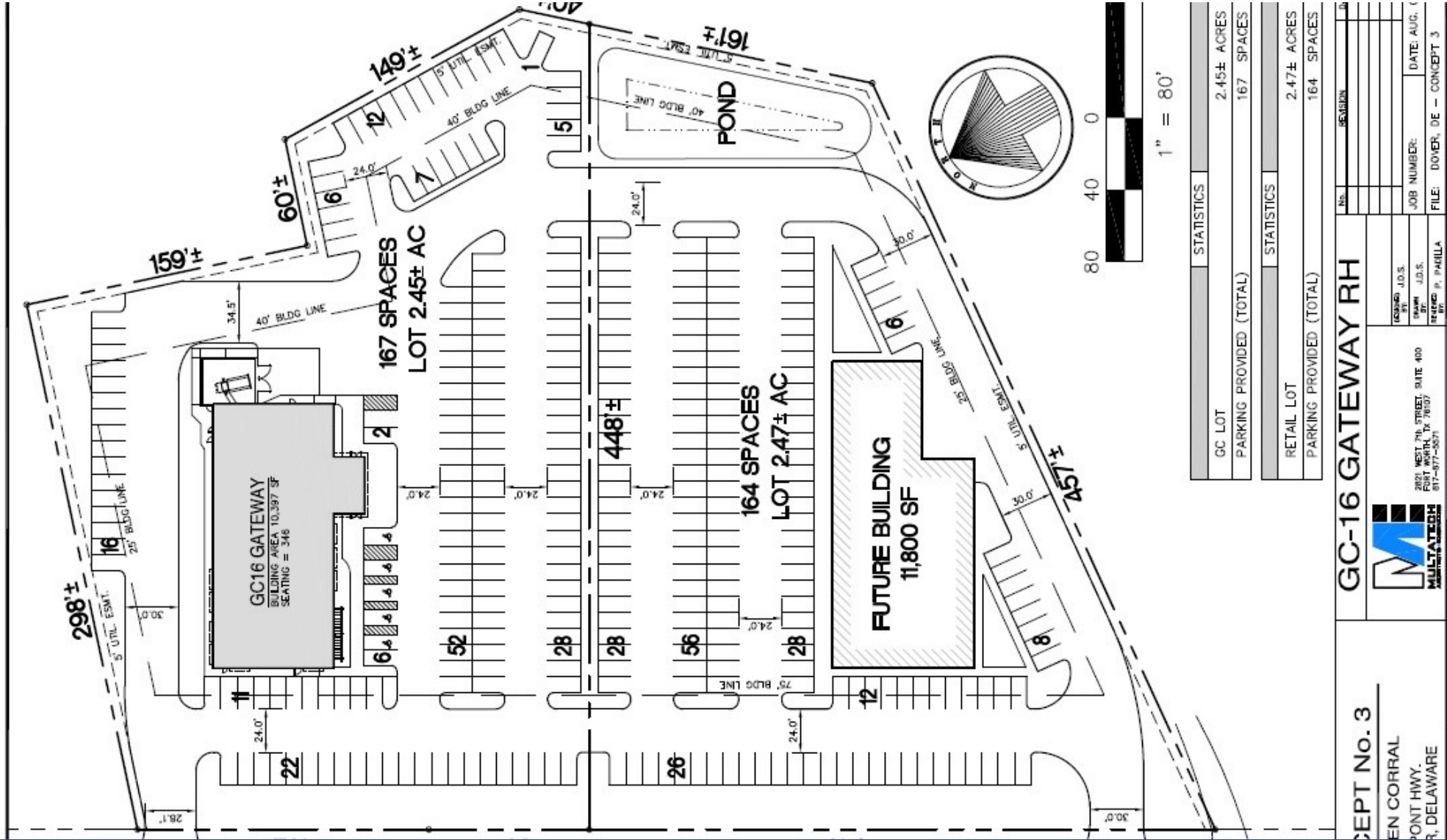


R&R Commercial Realty ♦ 46 South State Street, Dover, DE 19901 ♦ 302-674-3400 ♦ [www.randrcommercialrealty.com](http://www.randrcommercialrealty.com)

All information contained herein is believed to be accurate, however was obtained from third parties and R & R Commercial Realty, Inc. does not warrant as to the accuracy submitted, subject to changes or modification without notice. Listing Broker represents the sellers interest.

# Proposed Retail Space For Lease

1965 S. DuPont Hwy, Dover, DE 19901



STATISTICS	2.45± ACRES	167 SPACES
GC LOT	2.45± ACRES	167 SPACES
PARKING PROVIDED (TOTAL)	167 SPACES	
STATISTICS	2.47± ACRES	164 SPACES
RETAIL LOT	2.47± ACRES	164 SPACES
PARKING PROVIDED (TOTAL)	164 SPACES	

**GC-16 GATEWAY RH**

DEPT No. 3  
 EN CORRAL  
 PONT HWY.  
 DELAWARE

2021 WEST 7TH STREET, SUITE 400  
 FORT WORTH, TX 76107  
 817-877-5571

ISSUED: J.O.S.  
 BY: [Signature]

DATE: AUG. 1

JOB NUMBER: [Blank]

FILE: DOVER, DE - CONCEPT 3

REVISION

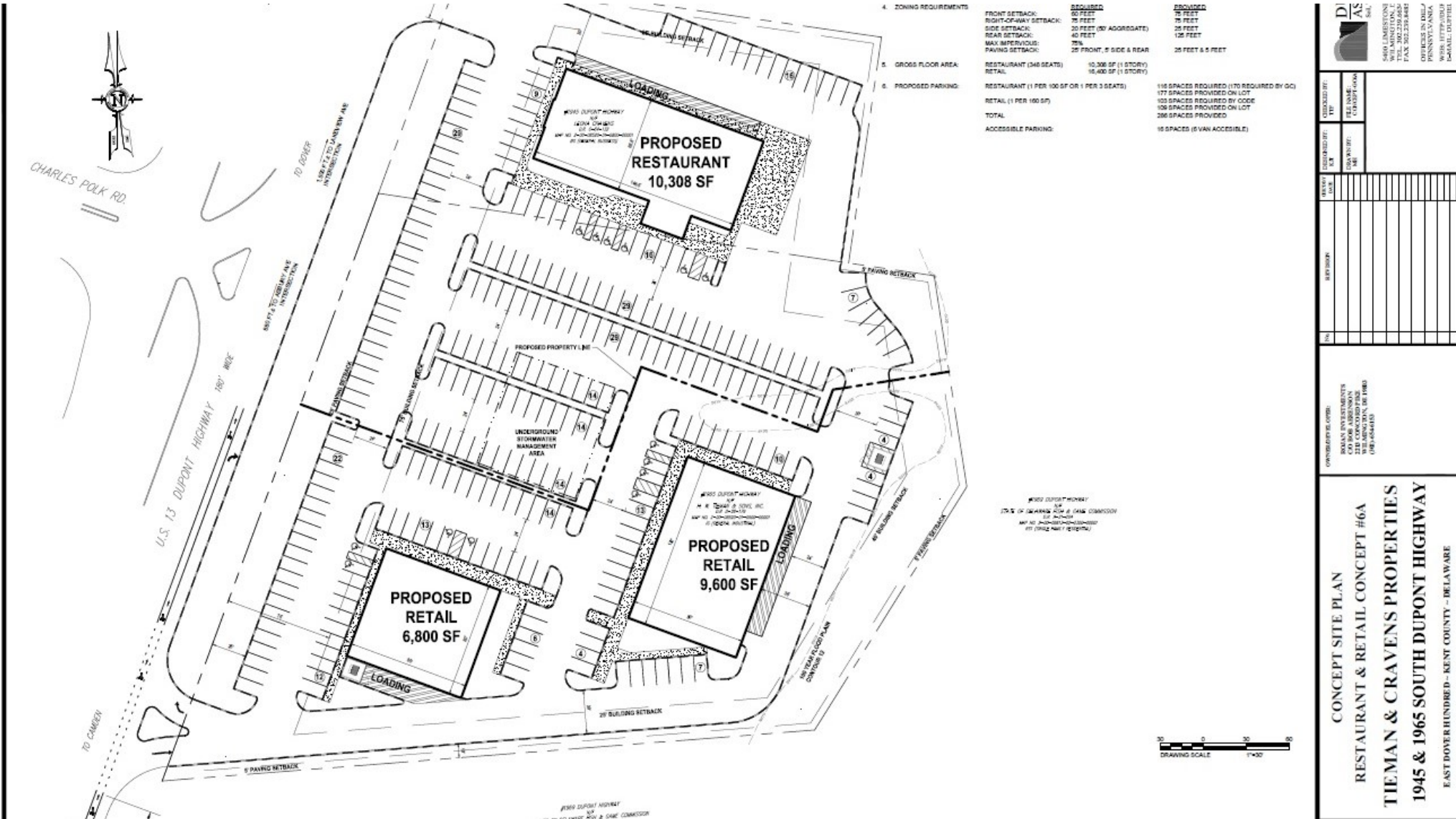
R&R Commercial Realty ♦ 46 South State Street, Dover, DE 19901 ♦ 302-674-3400 ♦ www.randrcommercialrealty.com

All information contained herein is believed to be accurate, however was obtained from third parties and R & R Commercial Realty, Inc. does not warrant as to the accuracy submitted, subject to changes or modification without notice. Listing Broker represents the sellers interest.



# Proposed Retail Space For Lease

1965 S. DuPont Hwy, Dover, DE 19901

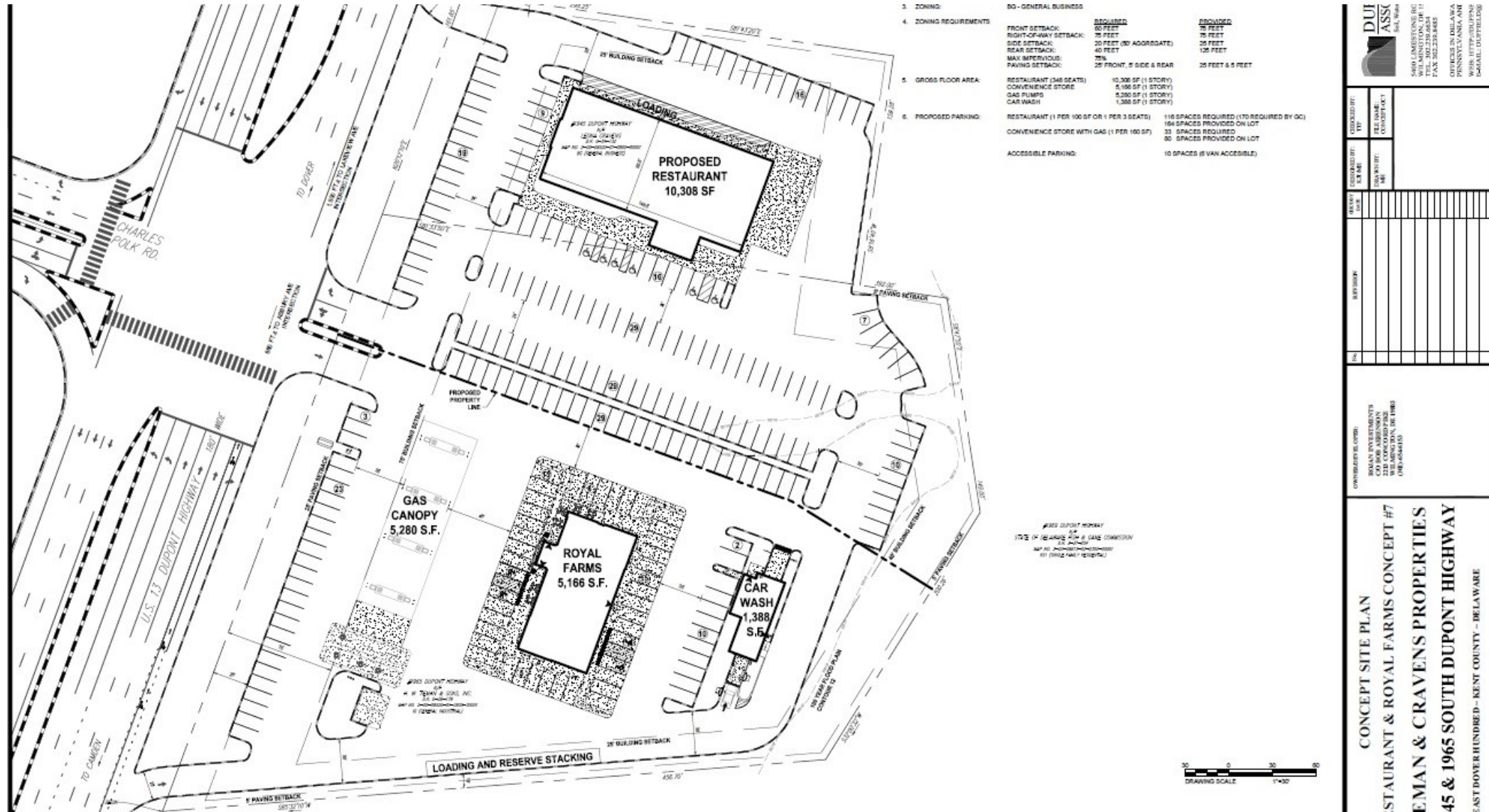


R&R Commercial Realty ♦ 46 South State Street, Dover, DE 19901 ♦ 302-674-3400 ♦ www.randrcommercialrealty.com

All information contained herein is believed to be accurate, however was obtained from third parties and R & R Commercial Realty, Inc. does not warrant as to the accuracy submitted, subject to changes or modification without notice. Listing Broker represents the sellers interest.

# Proposed Retail Space For Lease

1965 S. DuPont Hwy, Dover, DE 19901



R&R Commercial Realty ♦ 46 South State Street, Dover, DE 19901 ♦ 302-674-3400 ♦ www.randcommercialrealty.com