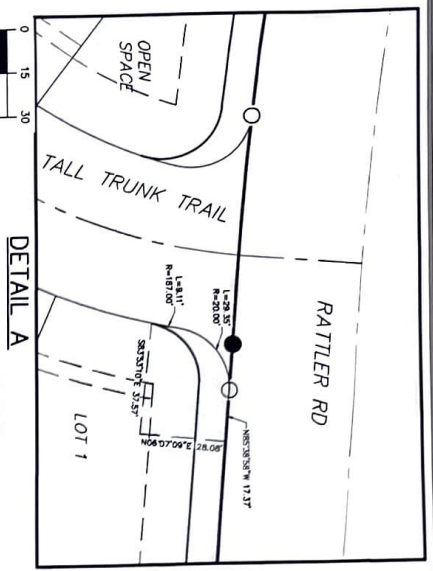


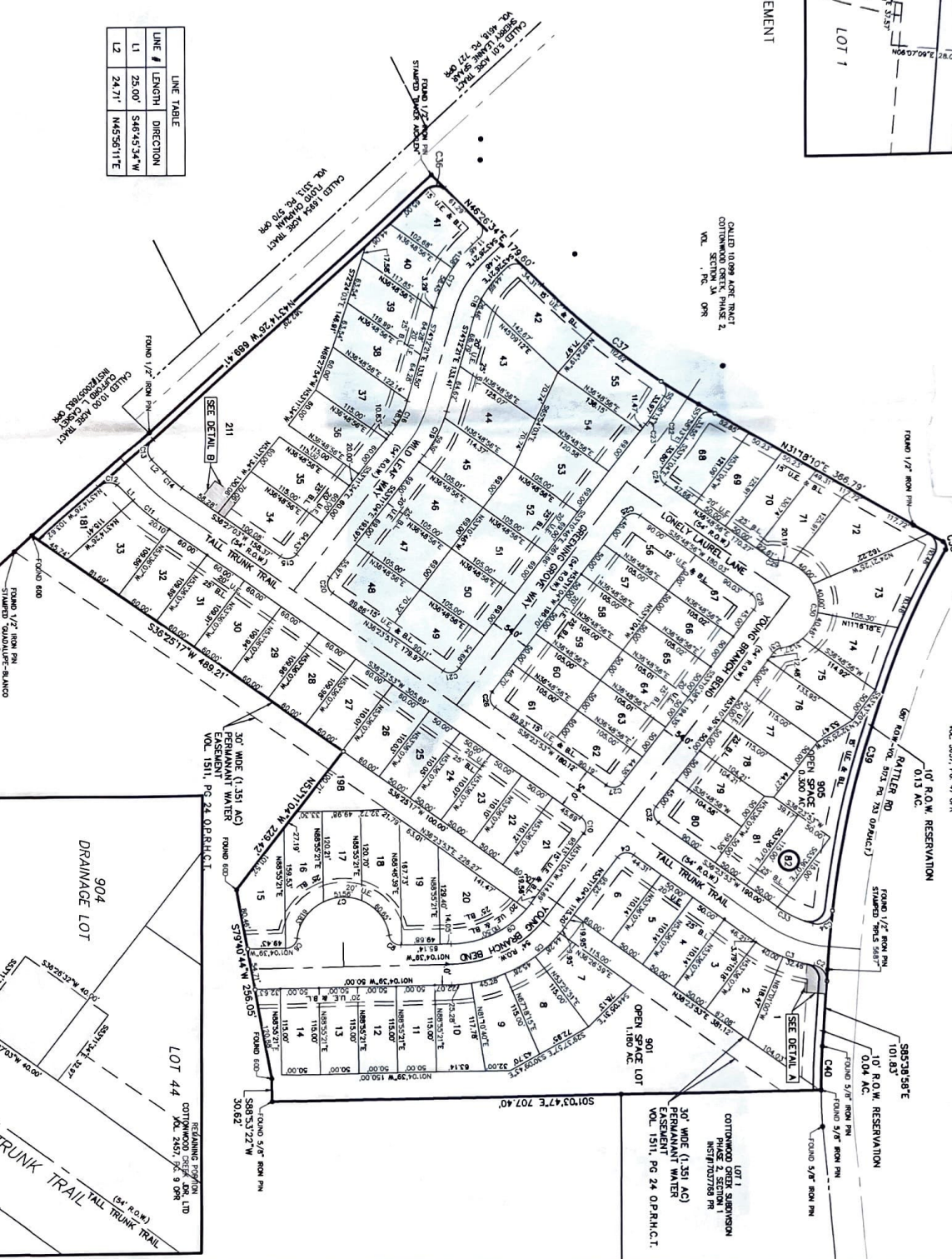
SCALE: 1" = 30'



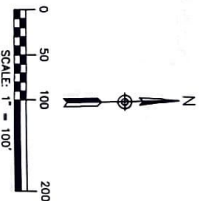
CURVE	LENGTH	RADIUS	DELTA	TANGENT	CHORD LENGTH	CHORD BEARING
C2	29.29'	20.00'	083.53°48'	17.98'	28.74'	S52.23°55'W
C3	81.57'	187.00'	024.59°23'	41.44'	80.92'	N22°44'33"E
C4	23.45'	15.00'	089.34°57'	14.88'	21.14'	S82°33'33"E
C5	170.07'	187.00'	052.70°25'	91.42'	164.26'	N27°07'31"W
C6	21.76'	15.00'	083.70°59'	13.29'	19.90'	N42.27°38"W
C7	174.04'	60.00'	166.11°36'	49.57'	119.13'	S01°04'39"E
C8	21.76'	15.00'	083.70°59'	13.29'	19.90'	N42.27°38"E
C9	170.96'	133.00'	052.70°25'	65.02'	116.83'	N27°07'31"W
C10	23.67'	15.00'	080.25°03'	15.11'	21.29'	S81.56°24"W
C11	41.05'	227.00'	0102°14'2"	20.58'	41.00'	N41.34°44"E
C12	31.42'	20.00'	090.00°00'	20.00'	28.28'	S01°45'34"E
C13	31.70'	20.00'	090.49°24'	20.29'	28.49'	S88.99°07"E
C14	31.22'	173.00'	0107°20'28"	15.65'	31.8'	N43°01'31"E
C15	23.48'	15.00'	089.41°08'	14.92'	21.15'	N83°20'31"W
C16	48.71'	133.00'	020°59'10"	24.63'	48.44'	N63°40'39"W
C17	100.03'	187.00'	030.38°56'	51.24'	98.84'	S89.52°53"E
C18	71.14'	133.00'	030.38°56'	36.45'	70.30'	S89.52°53"E
C19	68.61'	187.00'	021°01'17"	34.69'	68.22'	N83°41'43"W
C20	23.69'	15.00'	090°25'03"	15.12'	21.31'	N81.33°03"E
C21	23.45'	15.00'	089.34°57'	14.89'	21.14'	N83.51°36"W
C22	15.62'	187.00'	004°47'09"	7.81'	15.61'	N55°34'38"W
C23	11.11'	133.00'	004°47'09"	5.56'	11.11'	N55.34°38"W
C24	23.56'	15.00'	090.00°00'	15.00'	21.21'	N81°48'56"E
C25	23.56'	15.00'	090.00°01'	15.00'	21.21'	S08°11°04"E
C26	23.67'	15.00'	090.25°02'	15.11'	21.29'	N81.56°24"E
C27	23.45'	15.00'	089.34°57'	14.89'	21.14'	N83.51°36"W
C28	23.56'	15.00'	090.00°00'	15.00'	21.21'	S81°48'56"W
C29	8.16'	15.00'	030°15'00"	4.20'	8.08'	N21°11'25"E
C30	171.91'	60.00'	164°09'38"	43.30'	118.86'	S87°41'19"W
C31	11.26'	15.00'	042°59'34"	5.91'	10.99'	S31°41'17"E
C32	23.67'	15.00'	090.25°03'	15.11'	21.29'	N81.56°24"E
C33	50.51'	133.00'	021°45'34"	25.56'	50.21'	N25°31°08"E
C34	34.16'	20.00'	097°51°05"	22.95'	30.15'	N34°17'14"W
C35	31.31'	20.00'	089.41°00'	19.89'	28.21'	N01°36°05"E
C37	264.15'	980.01'	015°26'36"	132.88'	263.35'	N38°43'16"E
C38	12.05'	8.00'	086°19°02"	7.50'	10.94'	N74°27'41"E
C39	585.36'	1394.85'	024°02'40"	297.05'	581.07'	S74°24'08"E
C40	57.87'	728.87'	004°33'41"	28.93'	57.85'	S87°55'46"E

LINE #	LENGTH	DIRECTION
L1	25.00'	S46°45'34"W
L2	24.71'	N45°56'11"E

FINAL SUBDIVISION PLAT:  
COTTONWOOD CREEK, PHASE 2,  
SECTION 3B  
CITY OF SAN MARCOS, TEXAS



- LEGEND:
- = 1/2" IRON PIN W/ PLASTIC CAP STAKED "HMT"
  - = BUILDING SETBACK LINE
  - = UTILITY EASEMENT
  - = RIGHT-OF-WAY
  - = MAP AND PLAT RECORDS
  - = OFFICIAL PUBLIC RECORDS, HAYS COUNTY, TEXAS



DETAIL B  
TURNAROUND EASEMENT

