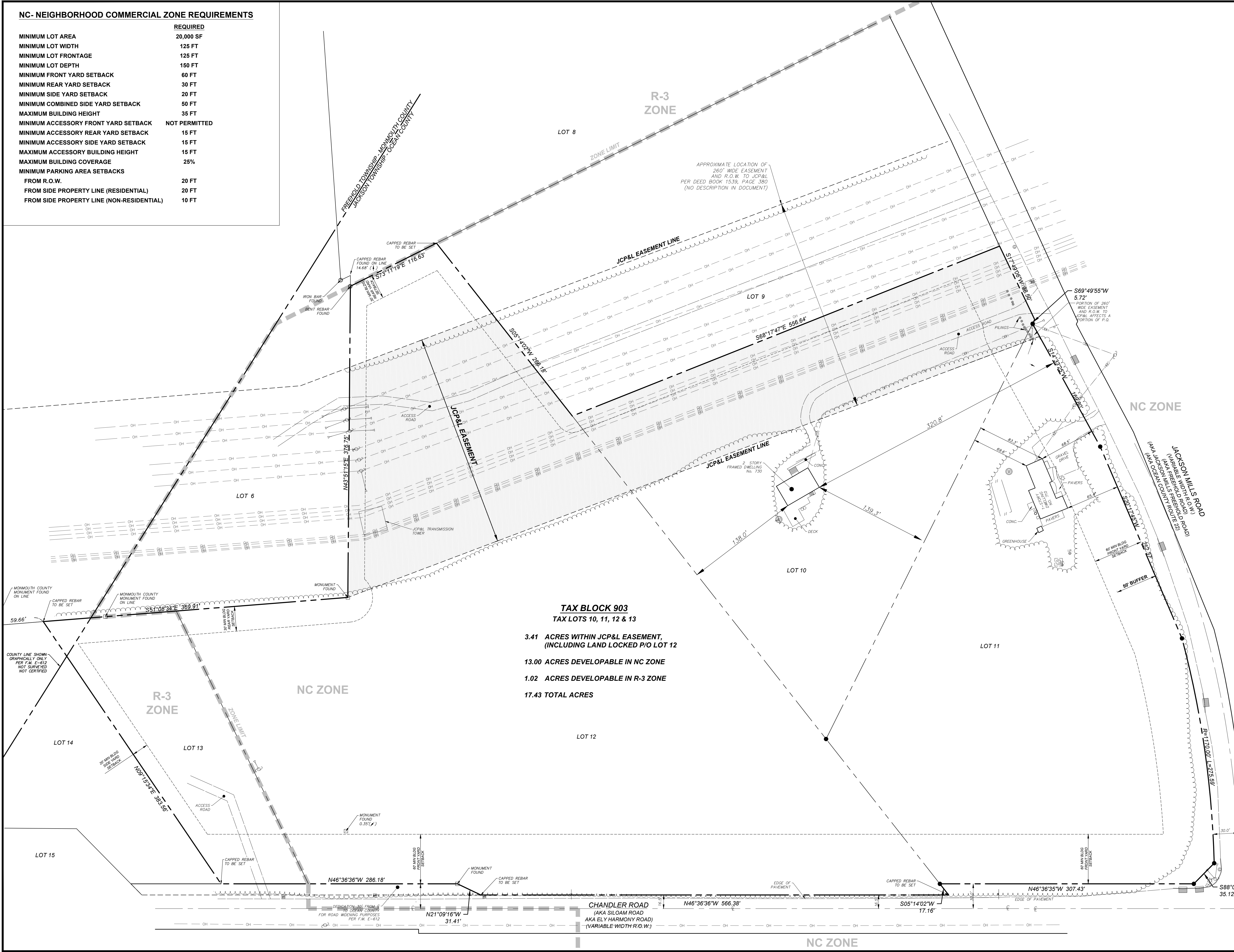


OWNERSHIP OF DOCUMENTS:  
 THIS DOCUMENT AND THE DATA AND DESIGN INCORPORATED HEREIN, AS AN INSTRUMENT OF PROFESSIONAL DESIGN SERVICES, IS THE PROPERTY OF PDS PROFESSIONAL DESIGN SERVICES, L.L.C. AND IS NOT TO BE REPRODUCED, COPIED, OR TRANSMITTED IN ANY FORM OR BY ANY MEANS, WITHOUT THE WRITTEN AUTHORIZATION OF PDS PROFESSIONAL DESIGN SERVICES, L.L.C.

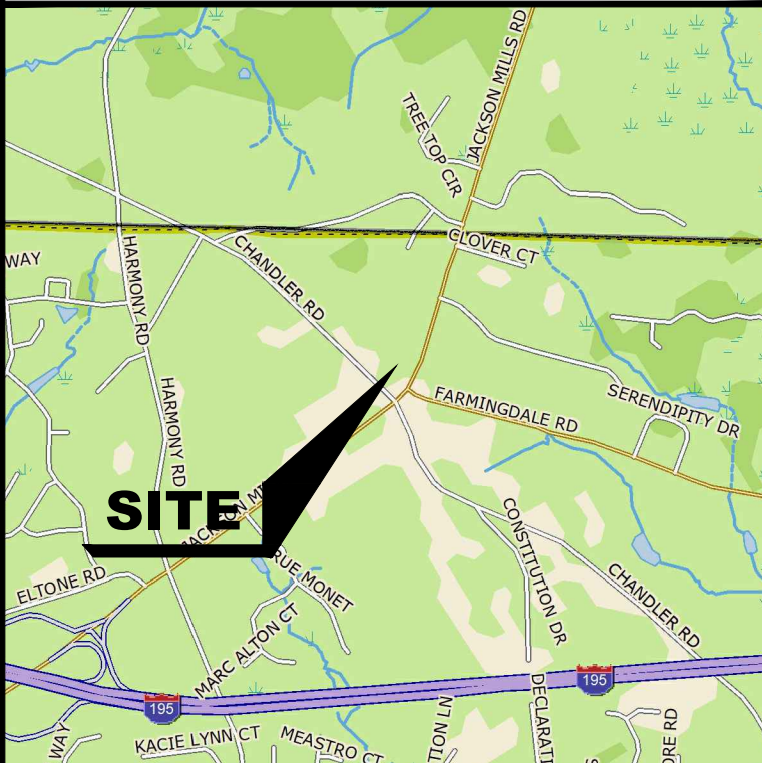
**NC- NEIGHBORHOOD COMMERCIAL ZONE REQUIREMENTS**

	REQUIRED
MINIMUM LOT AREA	20,000 SF
MINIMUM LOT WIDTH	125 FT
MINIMUM LOT FRONTAGE	125 FT
MINIMUM LOT DEPTH	150 FT
MINIMUM FRONT YARD SETBACK	60 FT
MINIMUM REAR YARD SETBACK	30 FT
MINIMUM SIDE YARD SETBACK	20 FT
MINIMUM COMBINED SIDE YARD SETBACK	50 FT
MAXIMUM BUILDING HEIGHT	35 FT
MINIMUM ACCESSORY FRONT YARD SETBACK	NOT PERMITTED
MINIMUM ACCESSORY REAR YARD SETBACK	15 FT
MINIMUM ACCESSORY SIDE YARD SETBACK	15 FT
MAXIMUM ACCESSORY BUILDING HEIGHT	15 FT
MAXIMUM BUILDING COVERAGE	25%
MINIMUM PARKING AREA SETBACKS	
FROM R.O.W.	20 FT
FROM SIDE PROPERTY LINE (RESIDENTIAL)	20 FT
FROM SIDE PROPERTY LINE (NON-RESIDENTIAL)	10 FT



**TAX BLOCK 903**  
**TAX LOTS 10, 11, 12 & 13**

- 3.41 ACRES WITHIN JCP&L EASEMENT, (INCLUDING LAND LOCKED P/O LOT 12)
- 13.00 ACRES DEVELOPABLE IN NC ZONE
- 1.02 ACRES DEVELOPABLE IN R-3 ZONE
- 17.43 TOTAL ACRES



**KEY MAP**  
 SCALE: 1" = 2000'

50 0 50 100  
 SCALE IN FEET

No.	DATE	DESCRIPTION	BY

**PDS**  
**PROFESSIONAL DESIGN SERVICES, L.L.C.**

CONSULTING ENGINEERS, LAND SURVEYORS, PLANNERS,  
 ENVIRONMENTAL SCIENTISTS, CONSTRUCTION SERVICES  
 1245 AIRPORT ROAD, SUITE 1, LAKEWOOD, NEW JERSEY 08701  
 PHONE 732 363 0060 FAX 732 363 0073  
 NEW JERSEY STATE BOARD OF P.E. & L.S.  
 CERTIFICATE OF AUTHORIZATION NO. 246A29125400

**IAN M BORDEN, PP**  
 N.J. PROFESSIONAL PLANNER LICENSE #33100617400  
 IBORDEN@PDS-NJ.COM

**WILLIAM A. STEVENS, PE, PP**  
 PROFESSIONAL ENGINEER, NEW JERSEY LIC. #39915  
 PROFESSIONAL PLANNER, NEW JERSEY LIC. #3304  
 BSTEVENS@PDS-NJ.COM

**GRAHAM J. MACFARLANE, PE, PP, CME**  
 PROFESSIONAL ENGINEER, NEW JERSEY LIC. #37110  
 PROFESSIONAL PLANNER, NEW JERSEY LIC. #6104  
 GRAHAM@PDS-NJ.COM

**STEVEN METELSKI, JR., PLS**  
 N.J. PROFESSIONAL LAND SURVEYOR LICENSE #43333  
 STEVEN@PDS-NJ.COM

**BASE MAP**  
 FOR  
**TAX BLOCK 903**  
**TAX LOTS 10 - 13**

TOWNSHIP OF JACKSON  
 OCEAN COUNTY NEW JERSEY

SCALE: 1" = 50' JOB NUMBER: 322284  
 DRAWN BY: KNL DATE: JANUARY 5, 2024  
 DESIGN/CALC'D BY: IMB SHEET: 1  
 CHECKED BY: WAS

KRISTIN J. ST/24  
 PROJECT#322284 - LOTS 10, 11, 12 & 13 - 322284 PROPERTY PLAN >