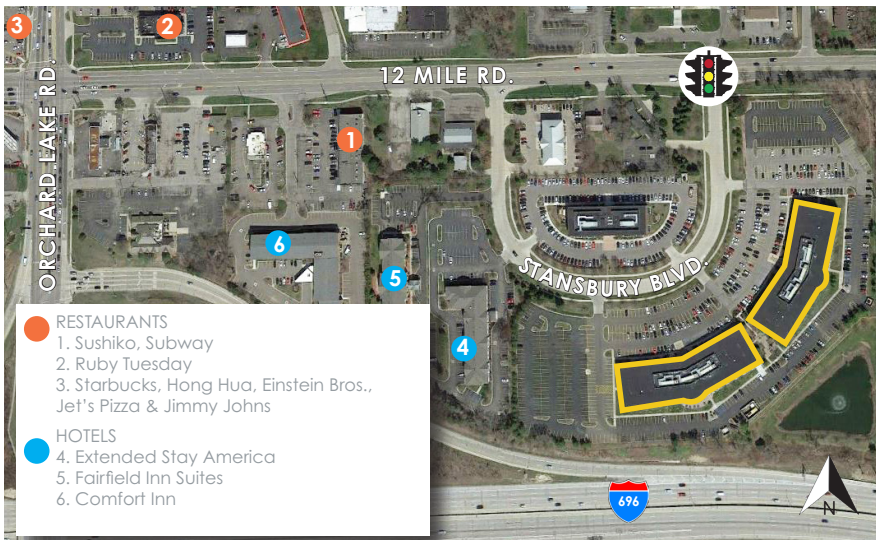


# ORCHARDS CORPORATE CENTER

27725 & 27755 STANSBURY BOULEVARD, FARMINGTON HILLS



## PREMISES

- Two, three-story office buildings totaling 216,000 SF

## AVAILABILITY

### 27725 Stansbury Boulevard

- 1st Floor: 3,761 SF
- 3rd Floor: 14,633 SF

### 27755 Stansbury Boulevard

- 1st Floor: 4,460 SF up to 7,102 SF
- 2nd Floor: 3,428 SF up to 5,665 SF
- 3rd Floor: 8,236 SF

## RENTAL RATE

- \$22.50 psf
- 2026 Base Year, plus electricity

## FEATURES AND AMENITIES

- **NEW AMENITIES** include; 24-hour self-checkout micro-market, by Market Twenty 4 Seven, with abundant selections, modern community style seating and flat screen televisions; fully equipped fitness center with flat screen televisions and two private showers
- **NEWLY RENOVATED** two-story atrium lobbies with premium finishes
- I-696 freeway visibility with prominent building signage available
- Attractive landscaped courtyard between buildings
- 27755 Stansbury equipped with a full-building generator
- Numerous neighboring amenities including two hotels within the park
- Adjacent I-696 interchange offers convenient access to all major freeways
- Ample, well-lit parking

## FOR MORE INFORMATION

Daniel Canvasser  
Jack Bergmann  
Wade Lorimer  
Newmark | nmrk.com  
248.350.9500

Dan Leppink | dleppink@kojaian.com  
Eric Horwitz | ehorwitz@kojaian.com  
Kojaian Management Corporation  
dleppink@kojaian.com  
248.644.7600

**NEWMARK**

**MORE THAN  
BUILDINGS**

LOCATION | BUSINESS | IMAGE | SUCCESS

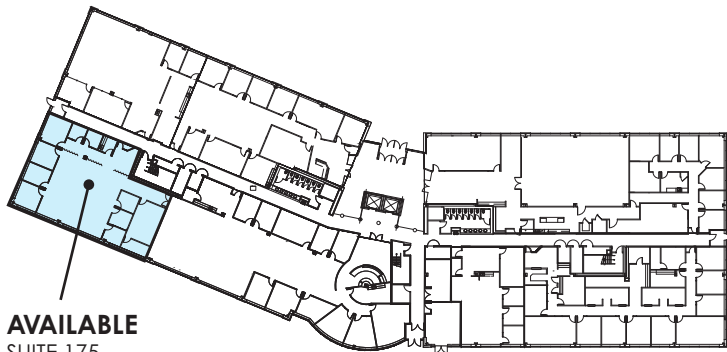
**KOJAIAN**

# ORCHARDS CORPORATE CENTER

27725 & 27755 STANSBURY BOULEVARD, FARMINGTON HILLS

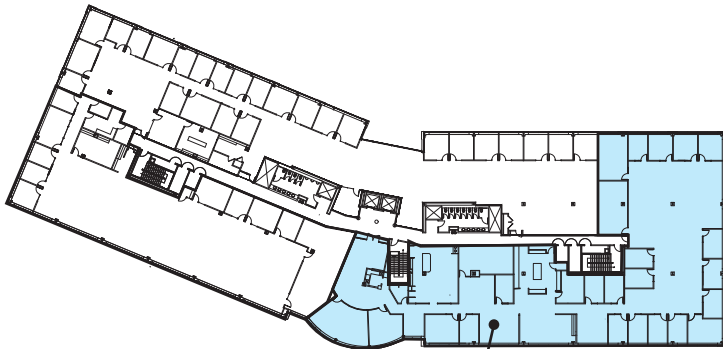
## 27725 STANSBURY BLVD.

### FIRST FLOOR



**AVAILABLE**  
SUITE 175  
3,761 RSF

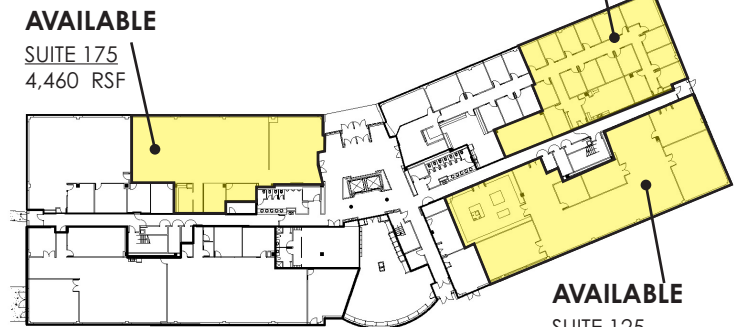
### THIRD FLOOR



**AVAILABLE**  
SUITE 300  
14,633 RSF

## 27755 STANSBURY BLVD.

### FIRST FLOOR

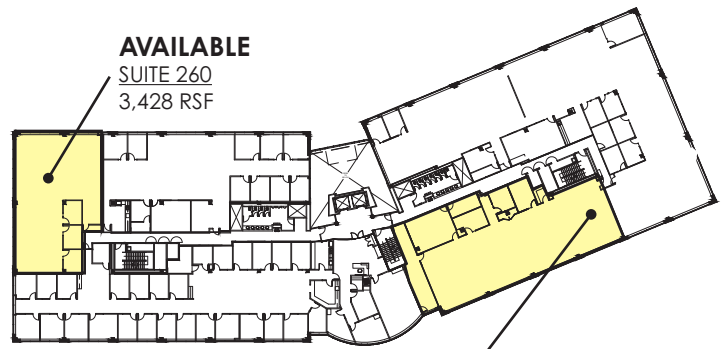


**AVAILABLE**  
SUITE 175  
4,460 RSF

**AVAILABLE**  
SUITE 140  
4,528 RSF

**AVAILABLE**  
SUITE 125  
7,102 RSF

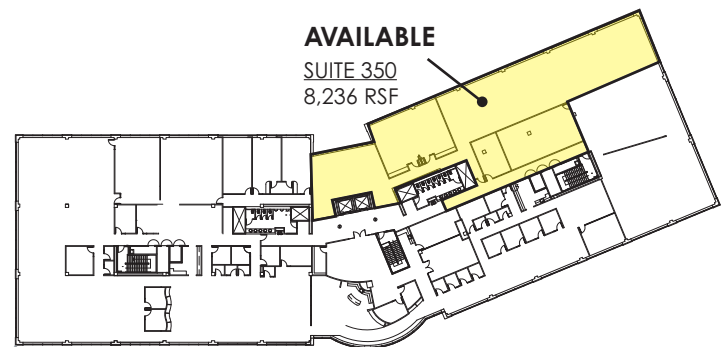
### SECOND FLOOR



**AVAILABLE**  
SUITE 260  
3,428 RSF

**AVAILABLE**  
SUITE 225  
5,665 RSF

### THIRD FLOOR



**AVAILABLE**  
SUITE 350  
8,236 RSF

#### FOR MORE INFORMATION

Daniel Canvasser  
Jack Bergmann  
Wade Lorimer  
Newmark | nmrk.com  
248.350.9500

Dan Leppink | dleppink@kojaian.com  
Eric Horwitz | ehorwitz@kojaian.com  
Kojaian Management Corporation  
dleppink@kojaian.com  
248.644.7600

**NEWMARK**

**KOJAIAN**