



W Reno Ave.

Hudiburg Circle

SITE

# SHOWROOM/WAREHOUSE SPACE | FOR LEASE

417 HUDIBURG CIRCLE, SUITE C, OKLAHOMA CITY, OK

**BRETT PRICE, CCIM, SIOR**

bprice@newmarkrp.com

C: 405.613.8380

**KRIS DAVIS, SIOR**

kgdavis@newmarkrp.com

C: 405.202.9525

**KARLEY HARPER, CCIM**

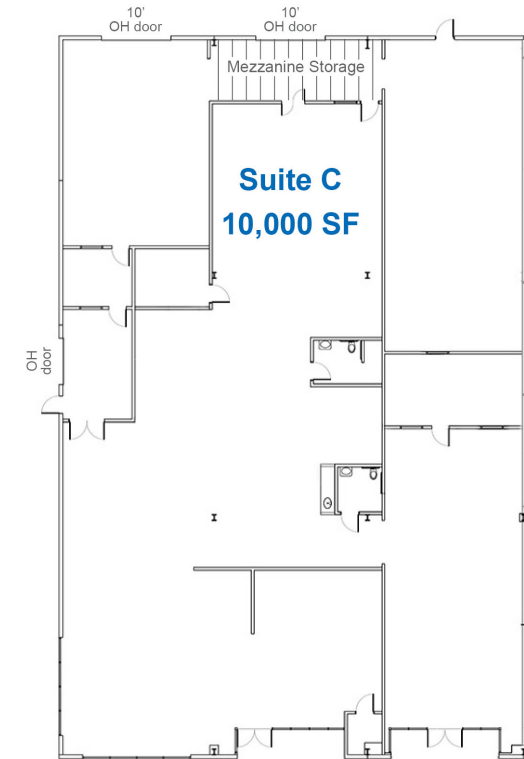
kharper@newmarkrp.com

C: 405.371.3498

**NEWMARK**  
ROBINSON PARK



# 417 HUDIBURG CIRCLE, SUITE C / FOR LEASE



## DETAILS

Available SF	10,000 SF
Lease Rate	\$10.50/SF/YR (NNN)
Building Size	30,000 SF
Zoning	I-2
Submarket	Southwest
Cross Streets	W Reno & Hudiburg Cir.

## HIGHLIGHTS

(3) 12' x 14' grade level doors
20' clear height
95'± truck court
Billboard signage
I-40 frontage
Available 6/1/2026

## PROPERTY OVERVIEW

This property features a mix of showroom, office and warehouse space with frontage along I-40 which sees approximately 131,500 vehicles per day. The building has undergone renovations which include new parking surfaces, new exterior paint, updated office/showroom spaces, and new billboard signage on I-40 for tenants. It is located approximately four miles from Downtown Oklahoma City and less than five miles from Will Rogers International Airport.