

# 233 HARVARD, MA AYER RD

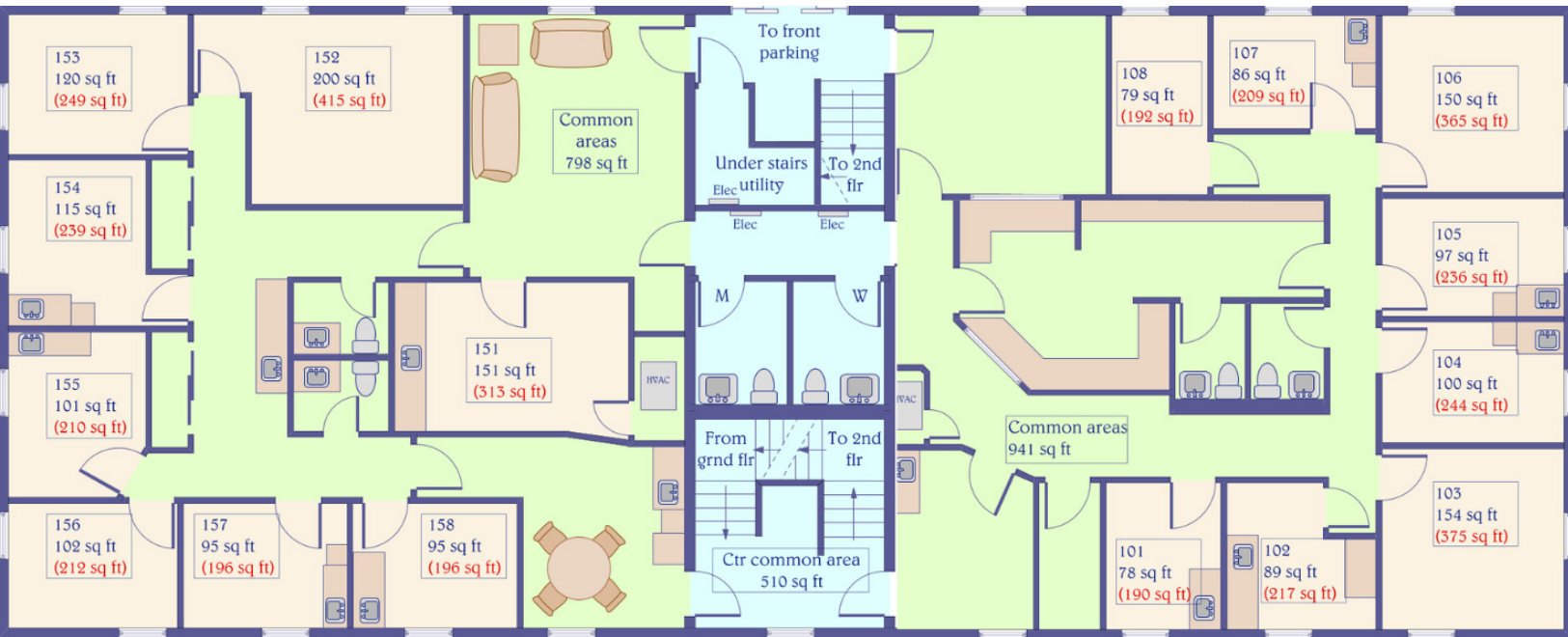


COMMERCIAL  
**O'BRIEN**  
PROPERTIES, INC

**2,000 - 4,000 SF Office  
Space For Lease**

# 233 AYER RD

233 AYER RD HARVARD, MA



## PROPERTY DESCRIPTION

Introducing 233 Ayer Rd, an exceptional office available for lease in Harvard, MA. This office space boasts a prime location near Route 111 and Route 2, and its spacious floor layout makes it ideal for a wide range of business ventures. The property's ample parking, nearby restaurants, and major transportation routes ensure connectivity and convenience.

## PROPERTY HIGHLIGHTS

- Building renovated in 2006
- 60 parking spaces
- 5/1000 SF parking ratio



## OFFERING SUMMARY

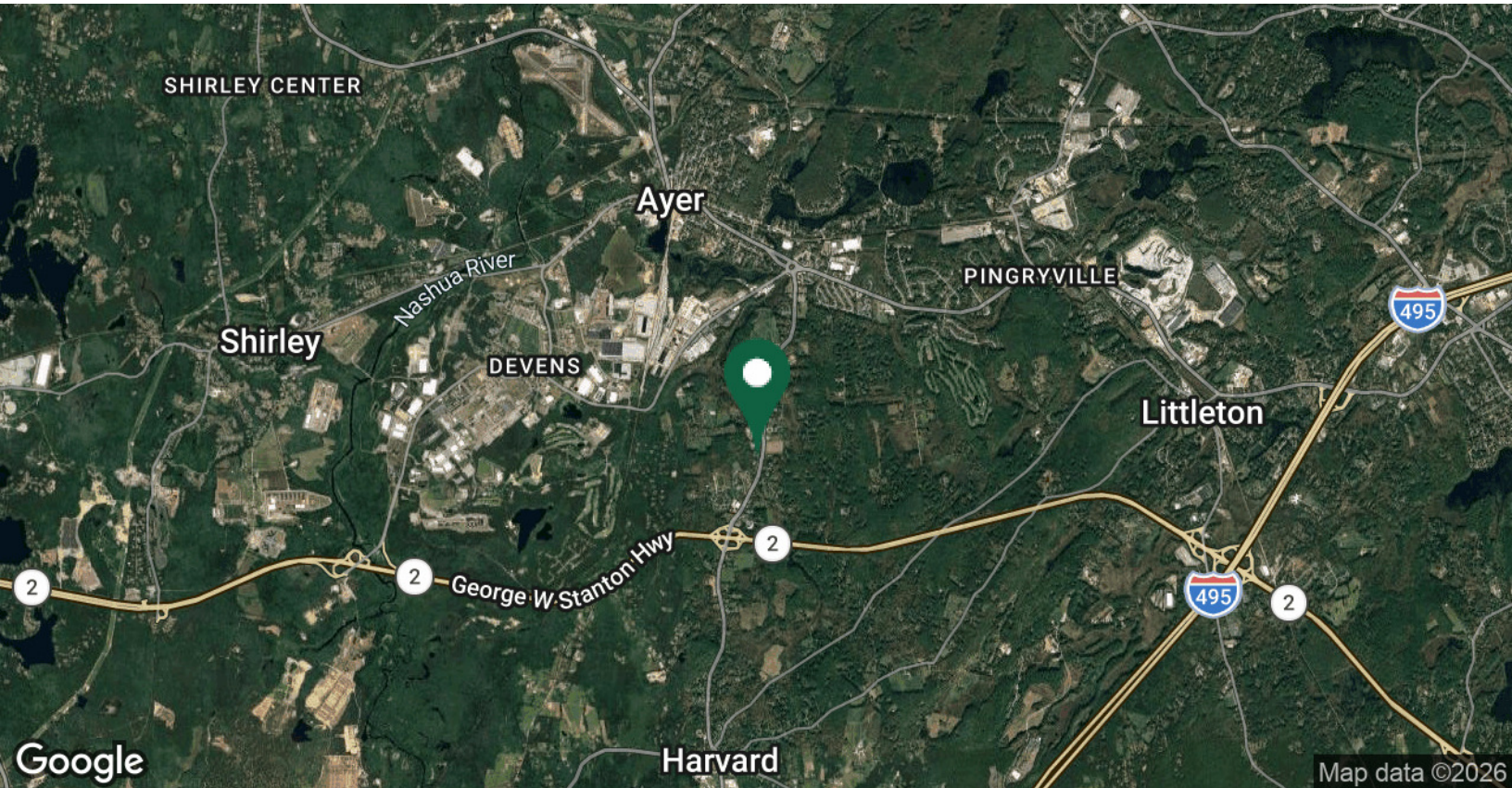
Building Size:	12,000 SF
Available SF:	2,000 - 4,000 SF
Lot Size:	3.69 Acres
Lease Rate:	Market

**BRANDON MEEKS**  
Senior Associate  
brandon@obriencommercial.com  
Mobile: 508.281.2939

COMMERCIAL  
**O'BRIEN**  
PROPERTIES, INC

# 233 AYER RD

233 AYER RD HARVARD, MA



**BRANDON MEEKS**  
Senior Associate  
brandon@obriencommercial.com  
Mobile: 508.281.2939

COMMERCIAL  
**O'BRIEN**  
PROPERTIES, INC



# 233 AYER RD

*HARVARD, MA*

**BRANDON MEEKS**

Senior Associate  
Mobile: 508.281.2939  
brandon@obriencommercial.com



We obtained the information above from sources we believe to be reliable. However, we have not verified its accuracy and make no guarantee, warranty or representation about it. It is submitted subject to the possibility of errors, omissions, change of price, rental or other conditions, prior sale, lease or financing, or withdrawal without notice. We include projections, opinions, assumptions or estimates for example only, and they may not represent current or future performance of the property. You and your tax and legal advisors should conduct your own investigation of the property and transaction.