



LAND FOR SALE

# 0 OAKDALE ROAD

OAKDALE, PA 15071

## 25.47 ACRES<sup>±</sup>

**CBRE**

Zoning: (L-1) Light Industrial  
North Fayette Township  
All Utilities Within Close Proximity  
Additional Land Available







# PROPERTY HIGHLIGHTS



## PROPERTY SIZE

25.47 Acres±



## LATITUDE/LONGITUDE

40.42110  
-80.19974



**ZONING: (L-1)**  
Light Industrial



## PARCEL ID

0494-A-00001-0000-00



## 2024 TAXES

\$2,029.55



## SCHOOL DISTRICT

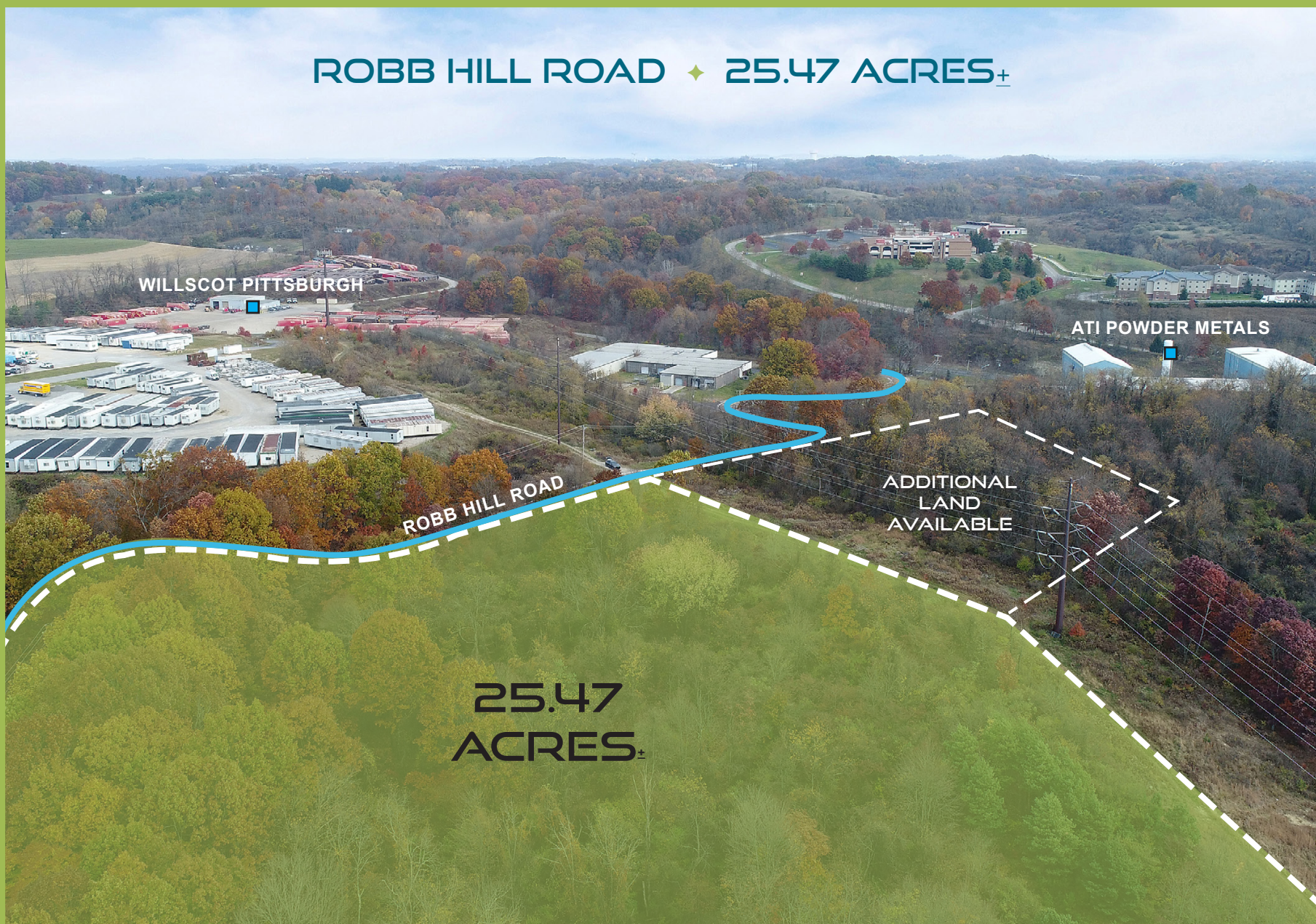
West Allegheny  
(Allegheny County)





# PROPERTY AERIAL

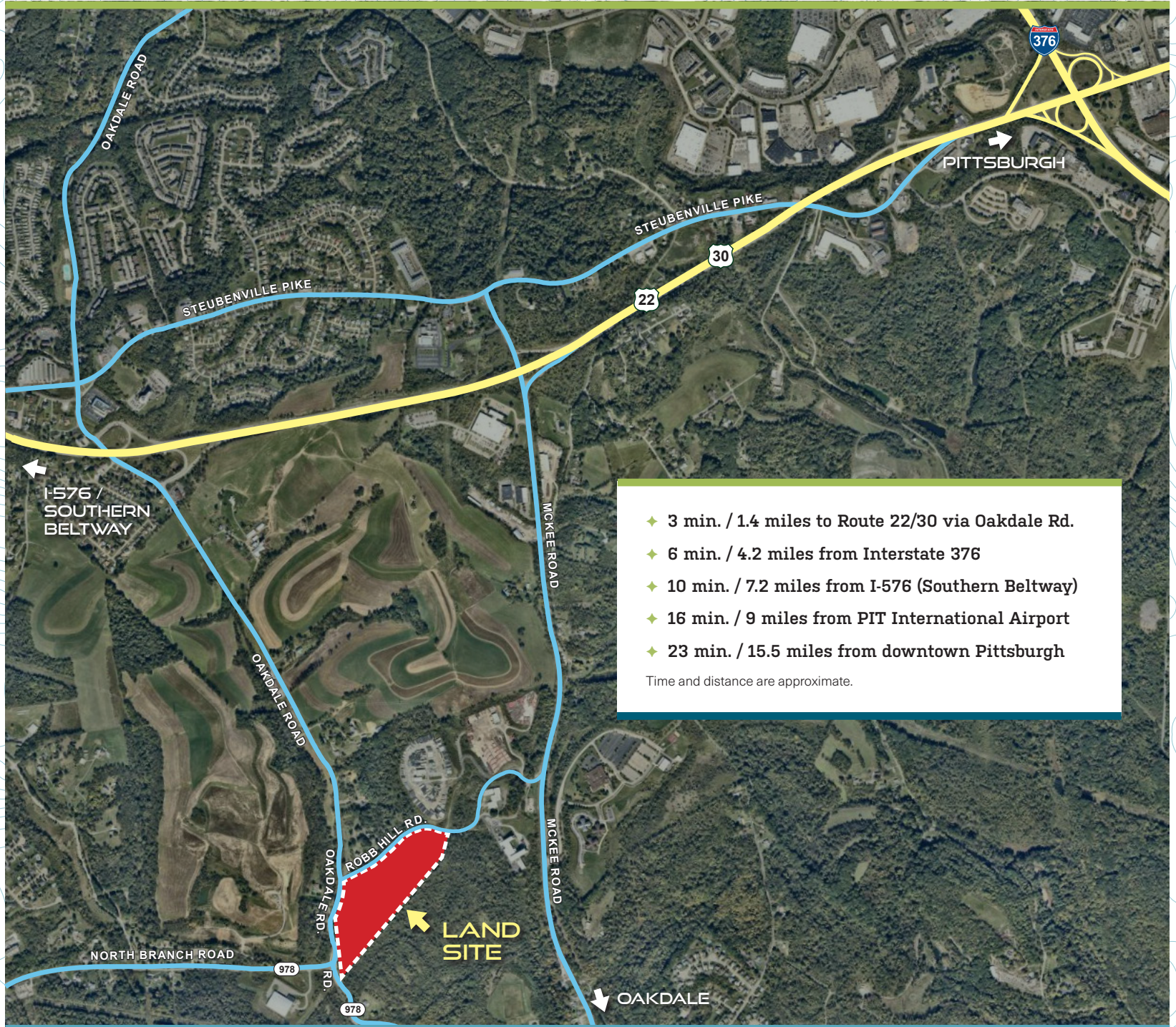
ROBB HILL ROAD ♦ 25.47 ACRES<sub>±</sub>







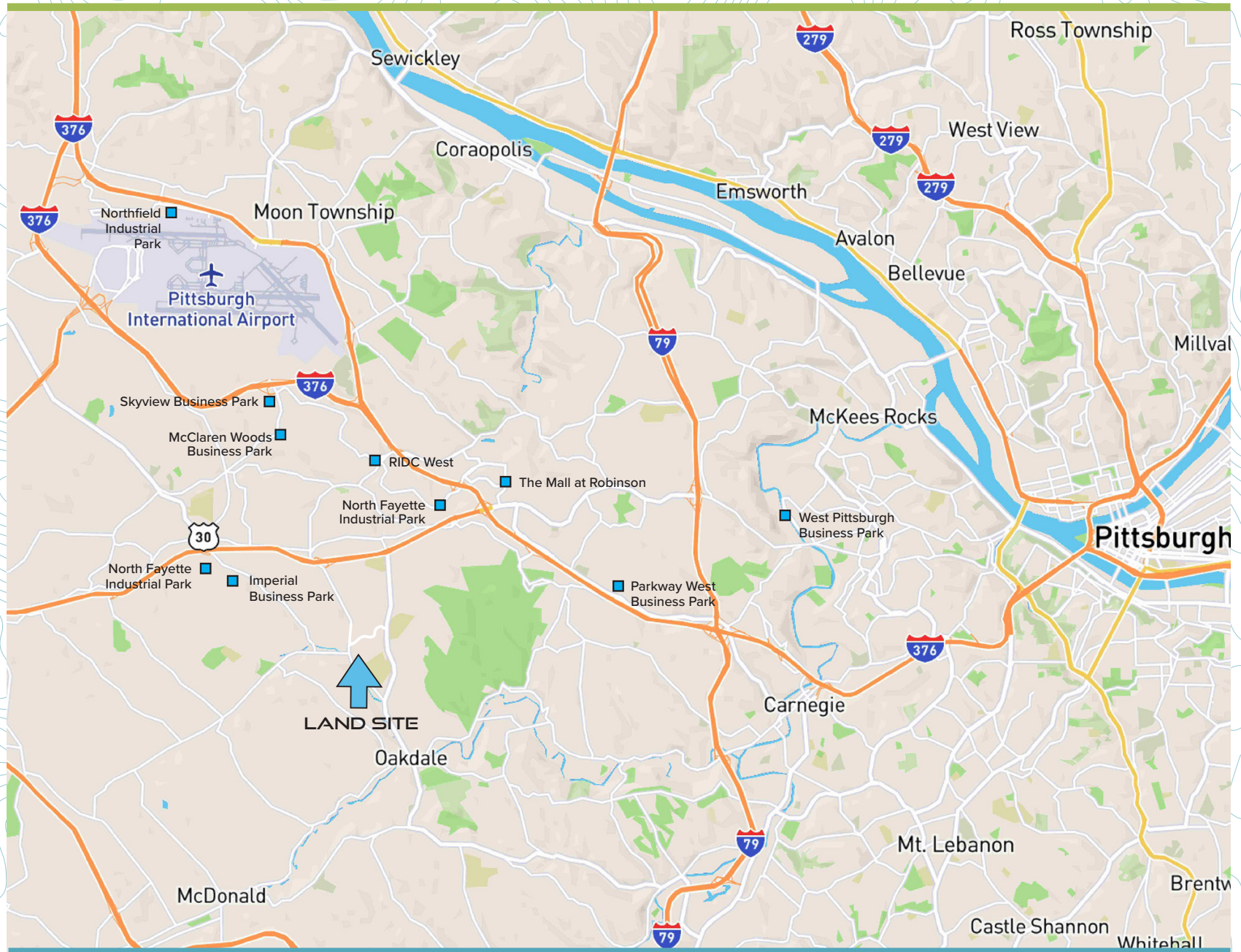
# LOCATION AERIAL







# LOCATION MAP







CONTACT US

## CONTACT US FOR MORE INFORMATION:

### **KIM CLACKSON**

Executive Vice President  
412.471.3018  
[kim.clackson@cbre.com](mailto:kim.clackson@cbre.com)

### **MATT CLACKSON**

Senior Vice President  
412.471.4069  
[matt.clackson@cbre.com](mailto:matt.clackson@cbre.com)

### **JOSH SINGER**

Associate  
412.496.7255  
[josh.singer@cbre.com](mailto:josh.singer@cbre.com)

## **CBRE**

One Oxford Centre  
40th Floor  
301 Grant Street  
Pittsburgh, PA 15219  
[cbre.com](http://cbre.com)



© 2025 CBRE, Inc. All rights reserved. This information has been obtained from sources believed reliable, but has not been verified for accuracy or completeness. You should conduct a careful, independent investigation of the property and verify all information. Any reliance on this information is solely at your own risk. CBRE and the CBRE logo are service marks of CBRE, Inc. All other marks displayed on this document are the property of their respective owners, and the use of such logos does not imply any affiliation with or endorsement of CBRE.