



TRI STATE
COMMERCIAL®
REAL ESTATE EXPERTS

For Lease



Prime Corner Retail Space W/ 100 Ft of Frontage for Lease

3,350 - 10,000 SF

460 Driggs Avenue • Brooklyn • NY

For Pricing Call: 718-437-6100

Shlomi Bagdadi
☎ 718.437.6100
sb@tristatecr.com

Avi Akiva
☎ 718.437.6100 x110
Avi.A@TriStateCR.com



Location Overview

Located in the Williamsburg neighborhood of Brooklyn between N 10th St & N 11th St near the Bedford Ave subway station

Nearest Transit: L train at Bedford Ave and the B62, B48, B32, & B43 bus lines.

Nearby Tenants Include MyMoon, Republic Latin Fusion, Better Body Bootcamp - Williamsburg, Nami Nori Williamsburg, Fushimi Williamsburg, NYC Pet, Buffalo Exchange, Chalk Gyms, Fedoroff's Roast Pork, Allswell, Leon's Bagels, Lilia, and more!

Main Highlights

- ▶ PRIME corner space
- ▶ 100 FT of frontage
- ▶ Loading dock
- ▶ HVAC
- ▶ 400 amps of electricity
- ▶ Gas available
- ▶ 11'6" ceilings
- ▶ Divisible



19,755 SF

Total Building Size



10,000 SF

Lot Size



M1-2/R6A

Zoning

FOR LEASE • 3,350 - 10,000 SF • For Pricing

Call: 718-437-6100

Shlomi Bagdadi
☎ 718.437.6100
sb@tristatecr.com

Avi Akiva
☎ 718.437.6100 x110
Avi.A@TriStateCR.com

Broker is relying on Landlord or other Landlord-supplied sources for the accuracy of said information and has no knowledge of the accuracy of it. Broker makes no representation and/or warranty, expressed or implied, as to the accuracy of such information.



FOR LEASE • 3,350 - 10,000 SF • For Pricing

Call: 718-437-6100

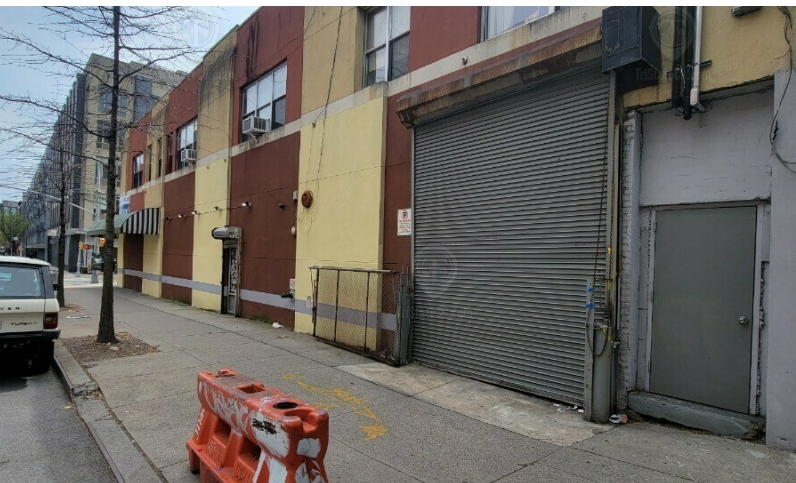
Shlomi Bagdadi
☎ 718.437.6100
sb@tristatecr.com

Avi Akiva
☎ 718.437.6100 x110
Avi.A@TriStateCR.com

Broker is relying on Landlord or other Landlord-supplied sources for the accuracy of said information and has no knowledge of the accuracy of it. Broker makes no representation and/or warranty, expressed or implied, as to the accuracy of such information.

Additional Photos

460 Driggs Avenue, Brooklyn, NY 11211



FOR LEASE • 3,350 - 10,000 SF • For Pricing

Call: 718-437-6100

Shlomi Bagdadi
📞 718.437.6100
sb@tristatecr.com

Avi Akiva
📞 718.437.6100 x110
Avi.A@TriStateCR.com

Broker is relying on Landlord or other Landlord-supplied sources for the accuracy of said information and has no knowledge of the accuracy of it. Broker makes no representation and/or warranty, expressed or implied, as to the accuracy of such information.



Map data ©2024 Google

FOR LEASE • 3,350 - 10,000 SF • For Pricing

Call: 718-437-6100

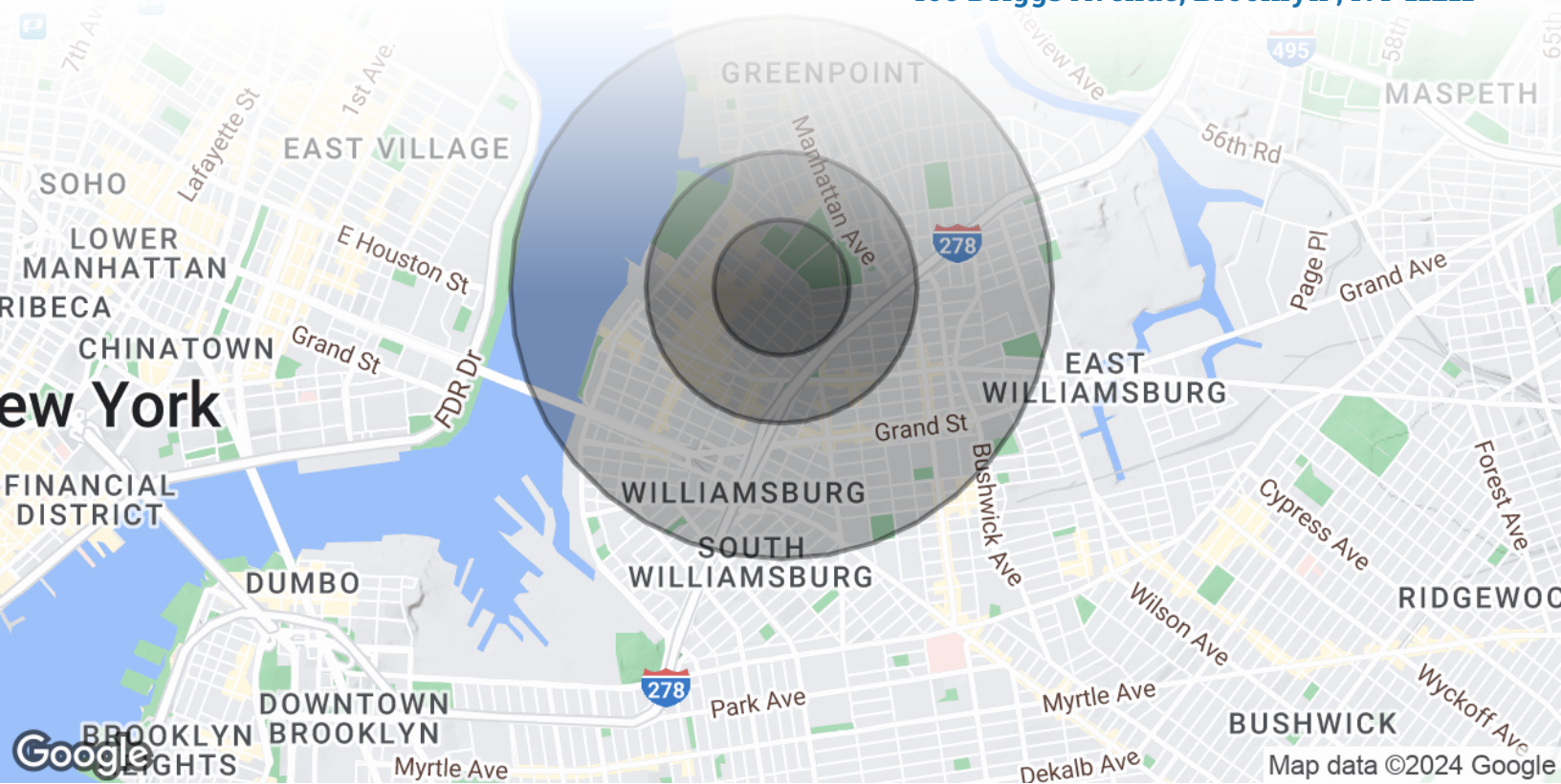
Shlomi Bagdadi
 ☎ 718.437.6100
 sb@tristatecr.com

Avi Akiva
 ☎ 718.437.6100 x110
 Avi.A@TriStateCR.com

Broker is relying on Landlord or other Landlord-supplied sources for the accuracy of said information and has no knowledge of the accuracy of it. Broker makes no representation and/or warranty, expressed or implied, as to the accuracy of such information.

Area Demographics

460 Driggs Avenue, Brooklyn , NY 11211



POPULATION	0.25 MILES	0.5 MILES	1 MILE
Total Population	8,012	33,045	122,345
Average Age	33.2	33.7	32.4
Average Age (Male)	34.0	34.0	32.2
Average Age (Female)	31.9	33.1	33.6
HOUSEHOLDS & INCOME	0.25 MILES	0.5 MILES	1 MILE
Total Households	4,856	17,615	58,829
# of Persons per HH	1.6	1.9	2.1
Average HH Income	\$169,602	\$153,086	\$120,607
Average House Value	\$1,061,297	\$1,111,730	\$819,920



122,345

People within 1 Mile



\$120,607

Avg Household Income

FOR LEASE • 3,350 - 10,000 SF • For Pricing

Call: 718-437-6100

Shlomi Bagdadi
 📞 718.437.6100
 sb@tristatecr.com

Avi Akiva
 📞 718.437.6100 x110
 Avi.A@TriStateCR.com

Broker is relying on Landlord or other Landlord-supplied sources for the accuracy of said information and has no knowledge of the accuracy of it. Broker makes no representation and/or warranty, expressed or implied, as to the accuracy of such information.

For Lease



TriStateCR.com

3,350 - 10,000 SF | 460 Driggs
Avenue | Prime Corner Retail
Spaces W/ 100 Ft of Frontage for
Lease

3,350 - 10,000 SF • For Pricing **Call: 718-437-6100**

460 Driggs Avenue • Brooklyn • NY

Shlomi Bagdadi
☎ 718.437.6100
sb@tristatecr.com

Avi Akiva
☎ 718.437.6100 x110
Avi.A@TriStateCR.com

SITE SOURCE
RETAIL BROKER NETWORK