



Keegan & Coppin
COMPANY, INC.

FOR LEASE

822 COLLEGE AVENUE, SUITE C
SANTA ROSA, CA

OFFICE SPACE NEAR DOWNTOWN



Go beyond broker.

PRESENTED BY:

DOUG BRAIK, SENIOR REAL ESTATE AGENT
LIC # 00544642 (707) 528-1400, EXT 245
DBRAIK@KEEGANCOPPIN.COM



PROPERTY DETAILS



822 COLLEGE AVENUE
SANTA ROSA, CA

OFFICE SPACE FOR LEASE

PROPERTY INFORMATION

HIGHLIGHTS

- Very Clean, Neat and Bright
- Close to all amenities in downtown Santa Rosa
- On-site parking, Reserved

Space Available

- **Suite C:** 575+/- SF (Above State Farm Insurance)

Total Building SF

5,853+/- SF

Parking

On-site

Zoning

CO/Office

LEASE TERMS

Rate

Suite D: \$1.60 PSF Gross

DESCRIPTION OF PREMISES

Multi-tenant building with good identity, on-site parking and alley access. Open office space, work counter completely surrounding the office, excellent window line.

DESCRIPTION OF AREA

Excellent location on College Avenue with quick access to downtown and east side, 4th Street, etc.



PRESENTED BY:

DOUG BRAIK, SENIOR REAL ESTATE AGENT
KEEGAN & COPPIN CO., INC.
LIC # 00544642 (707) 528-1400, EXT 245
DBRAIK@KEEGANCOPPIN.COM

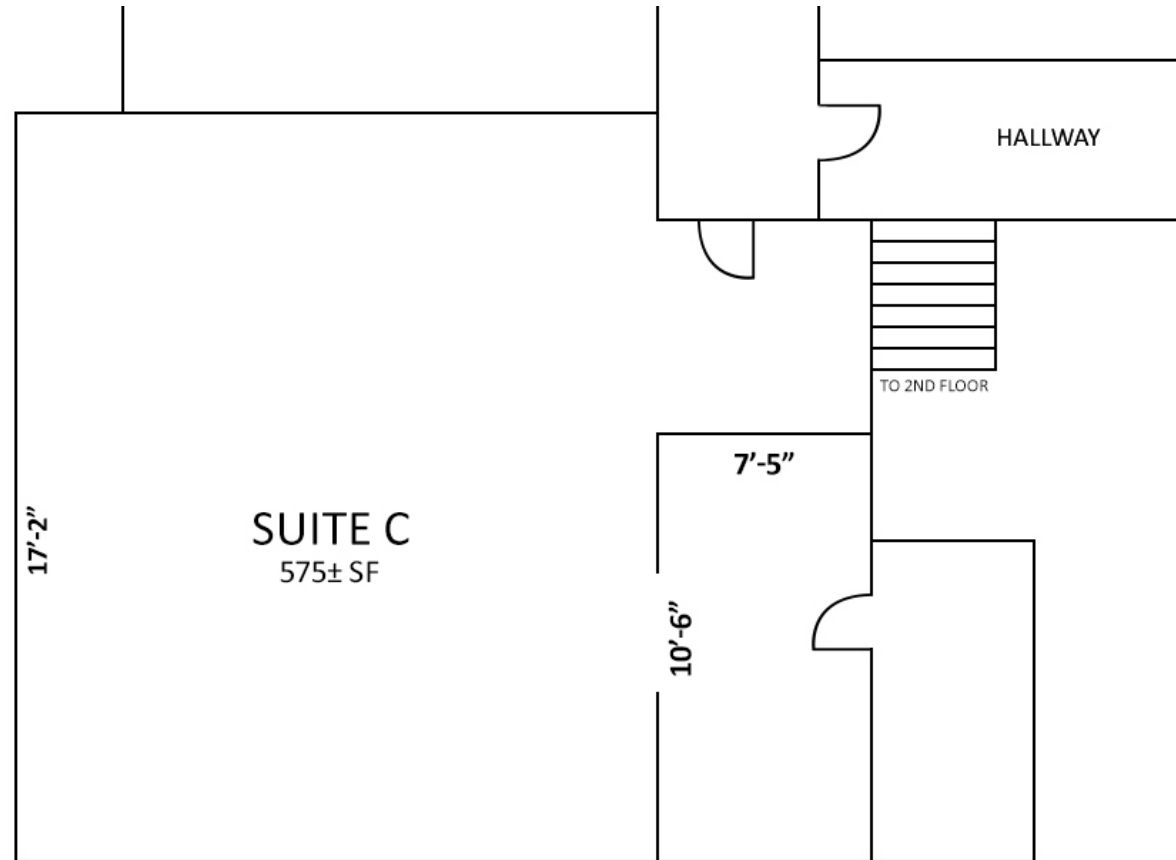


FLOOR PLAN



822 COLLEGE AVENUE
SANTA ROSA, CA

OFFICE SPACE
FOR LEASE



*NOT TO SCALE

PRESENTED BY: DOUG BRAIK, SENIOR REAL ESTATE AGENT
KEEGAN & COPPIN CO., INC.
LIC # 00544642 (707) 528-1400, EXT 245
DBRAIK@KEEGANCOPPIN.COM

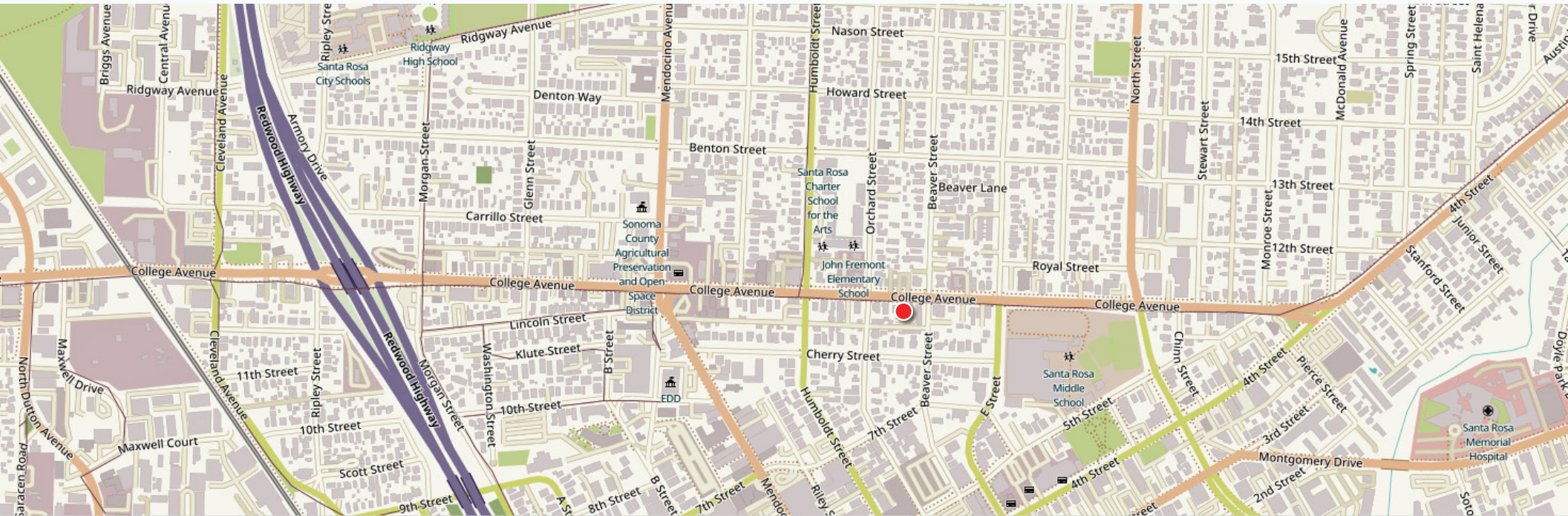


AREA DESCRIPTION



822 COLLEGE AVENUE
SANTA ROSA, CA

OFFICE SPACE
FOR LEASE



DESCRIPTION OF AREA

Midtown Santa Rosa, situated close to the intersection of Beaver Street and College Avenue. High traffic count.

NEARBY AMENITIES

- Restaurants
- Shopping
- Close to Downtown Santa Rosa

TRANSPORTATION ACCESS

- Easy access to Highway 101
- Public transportation

PRESENTED BY:

DOUG BRAIK, SENIOR REAL ESTATE AGENT
KEEGAN & COPPIN CO., INC.
LIC # 00544642 (707) 528-1400, EXT 245
DBRAIK@KEEGANCOPPIN.COM



PROPERTY PHOTOS



822 COLLEGE AVENUE
SANTA ROSA, CA

**OFFICE SPACE
FOR LEASE**



SUITE C



INGRESS OFF COLLEGE AVE.



COMMON REST ROOM



SUITE C



REAR PARKING

PRESENTED BY:

**DOUG BRAIK, SENIOR REAL ESTATE AGENT
KEEGAN & COPPIN CO., INC.
LIC # 00544642 (707) 528-1400, EXT 245
DBRAIK@KEEGANCOPPIN.COM**

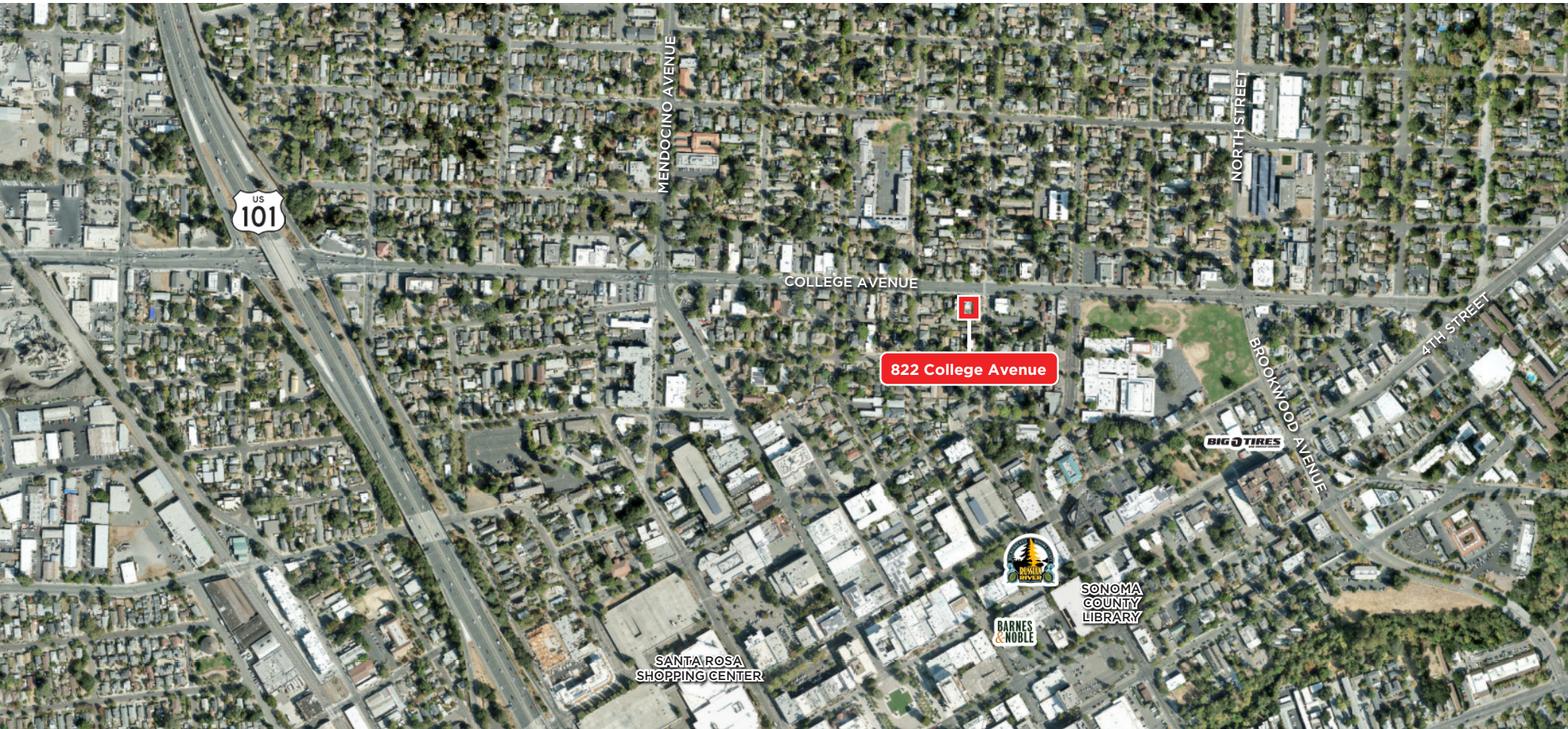


LOCATION MAP



822 COLLEGE AVENUE
SANTA ROSA, CA

OFFICE SPACE
FOR LEASE



Keegan & Coppin Co., Inc.
1355 North Dutton Avenue
Santa Rosa, CA 95401

PRESENTED BY: DOUG BRAIK, SENIOR REAL ESTATE AGENT
www.keegancoppin.com
LIC # 00544642 (707) 528-1400, EXT 245
DBRAIK@KEEGANCOPPIN.COM

REPRESENTED BY:

DOUG BRAIK, SENIOR REAL ESTATE AGENT
LIC # 00544642 (707) 528-1400, EXT 245
DBRAIK@KEEGANCOPPIN.COM

The above information, while not guaranteed, has been secured from sources we believe to be reliable. Submitted subject to error, change or withdrawal. An interested party should verify the status of the property and the information herein.

The above information, while not guaranteed, has been secured from sources we believe to be reliable. Submitted subject to error, change or withdrawal. An interested party should verify the status of the property and the information herein.