

FOR LEASE



# 7000 Heliotrope Drive

RETAIL | SHOWROOM | GALLERY

# Details

## AVAILABILITIES

Suite 700 - Corner Retail - 1,435 SF

Suite 706 - 720 SF

## RATE

\$2.65/SF NNN

## TERM

Negotiable

## **SUITE 706**

Boutique retail / cafe space  
with private bathroom

## **SUITE 700**

### **DYNAMIC RETAIL CORNER**

High visibility with expansive window line.  
Corner double door entry. adjacent space  
can be annexed to create larger space.



## LISTING TEAM



### **JAKE ZACUTO**

Managing Director  
310.469.9012

jake@zacutogroup.com  
BRE #01377441

### **JUSTIN KREISBERG**

Director  
310.469.9020

justin@zacutogroup.com  
BRE #02087507

Lease

700 HELIOTROPE DRIVE, LOS ANGELES, CA 90029

# Light Bright

Corner space with fantastic visibility

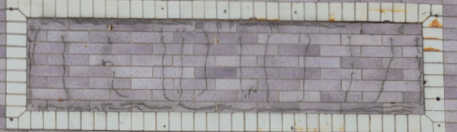




Heliotrope Dr  
700 N



ME  
EST  
8  
17



285-375-5815

# Lease

700 HELIOTROPE DRIVE, LOS ANGELES, CA 90029

700 Helitrope - 1,435 SF



706 Helitrope - 720 SF



700  
Heliotrope  
Drive

**GO GO JUICE**

**PIZZA**

**ONDO CAFE**

**EREWHON**

**PINE & CRANE**

**ALFRED COFFEE**

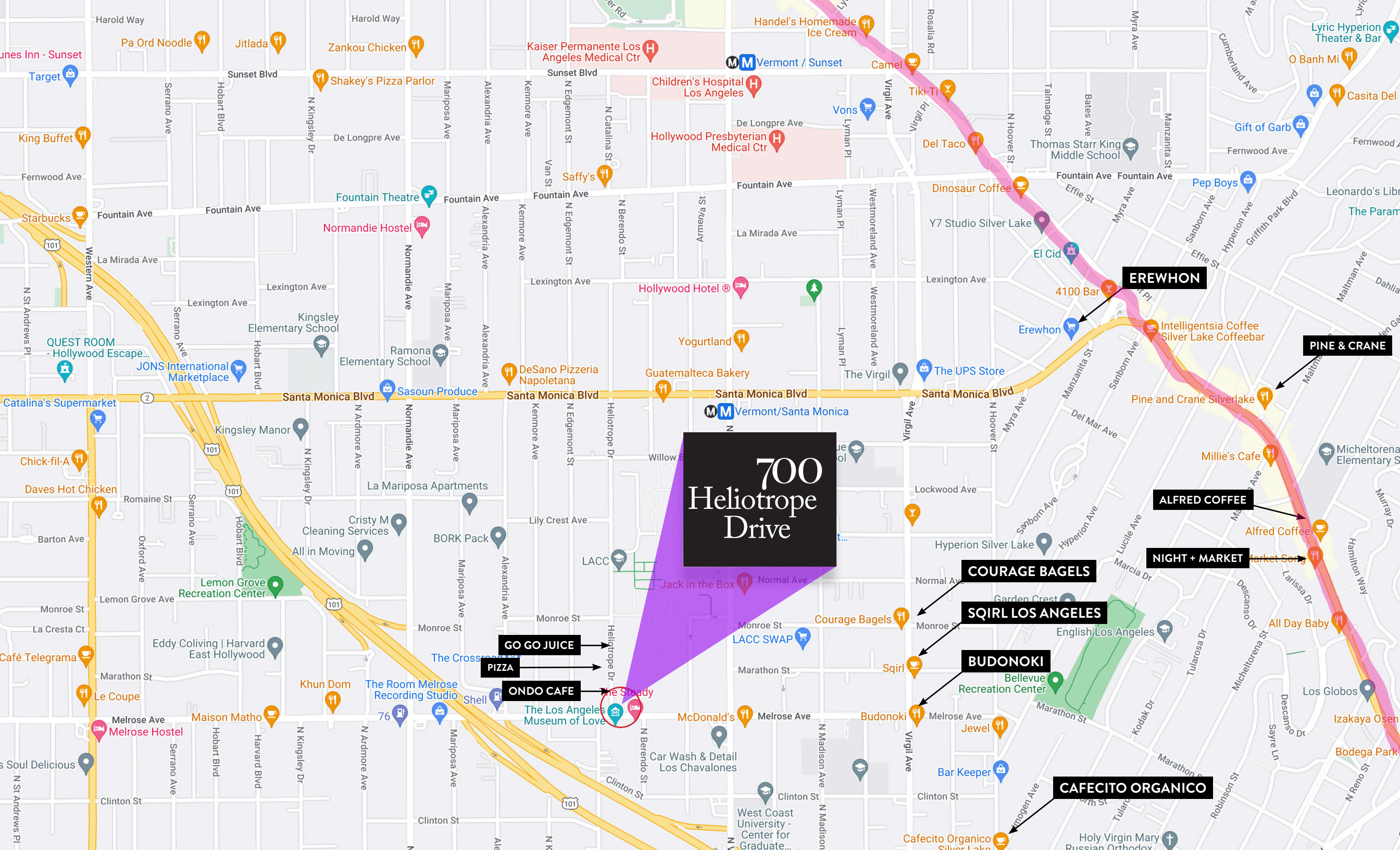
**NIGHT + MARKET**

**COURAGE BAGELS**

**SQIRL LOS ANGELES**

**BUDONOKI**

**CAFECITO ORGANICO**



# 700 Heliotrope Drive

LOS ANGELES, CA



**ZACUTO GROUP**  
COMMERCIAL REAL ESTATE

**JAKE ZACUTO**

*Managing Director*

310.469.9012

[jake@zacutogroup.com](mailto:jake@zacutogroup.com)

BRE #01377441

**JUSTIN KREISBERG**

*Director*

310.469.9020

[justin@zacutogroup.com](mailto:justin@zacutogroup.com)

BRE #02087507

*No warranty, express or implied, is made as to the accuracy of the information contained herein. This information is submitted subject to errors, omissions, change of price, rental or other conditions, withdrawal without notice. All parties who receive this material should not rely on it, but should use it as a starting point of analysis, and should independently confirm the accuracy of the information contained herein through a due diligence review of the books, records, files and documents that constitute reliable sources of the information described herein. Logos and images are for identification purposes only and may be trademarks of their respective companies. All terms provided are approximate. Leasee to verify. 6/2024*

ZACUTOGROUP.COM | 310.469.9300

