

37
W 39
STREET

BRYANT PARK RETAIL FOR LEASE

(Located between Fifth & Sixth Avenues)



As exclusive agent for the owner, we offer the following prime space for lease:



Space:

Ground Floor: 3,000 SF
Lower Level: 2,000 SF
Mezzanine: 1,750 SF

Frontage: 25 feet on 39th Street
Possession: Immediate
Rent: Upon Request

Transportation:

123, ACE, NRQW, BDFM, 7
S to Grand Central & Penn Station

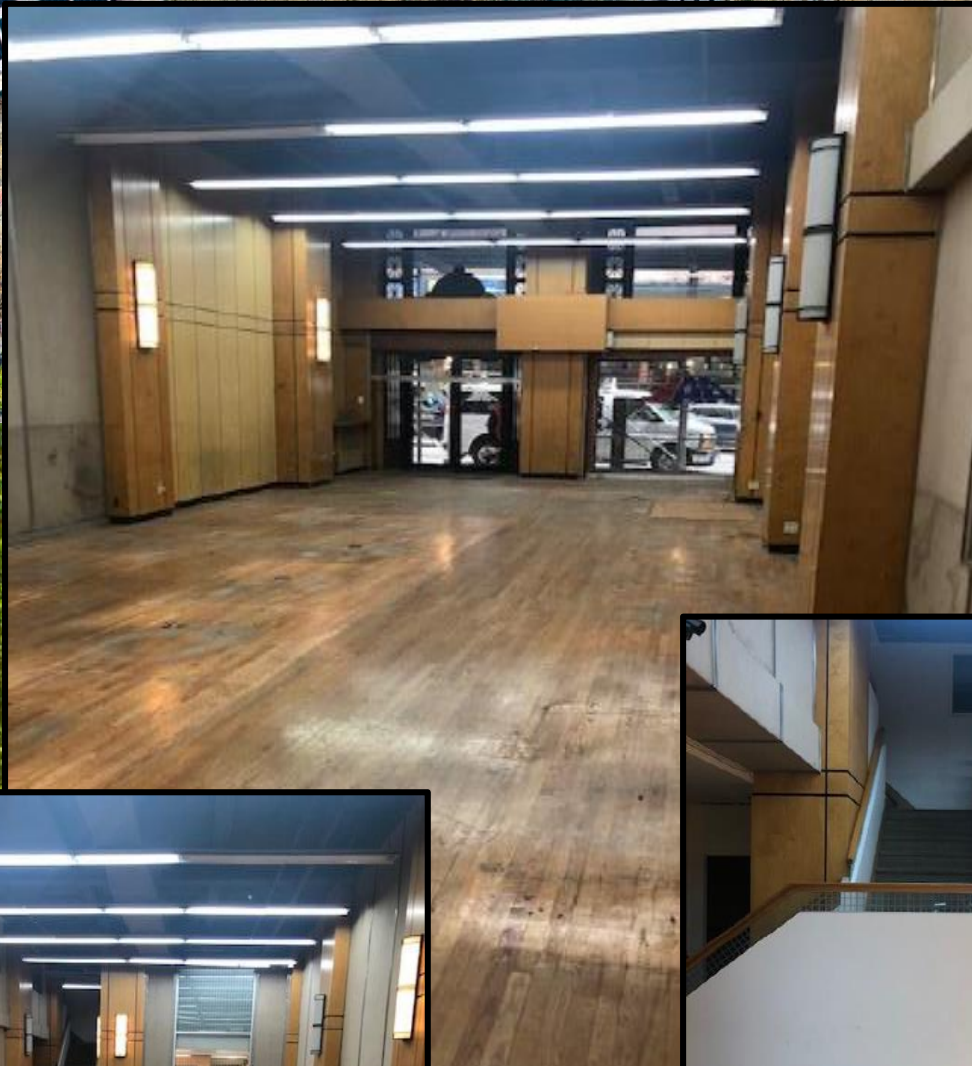
Neighbors:

Starbucks, Valley Bank, Staples
Bank of China, Proper West, Parker & Quinn

Comments:

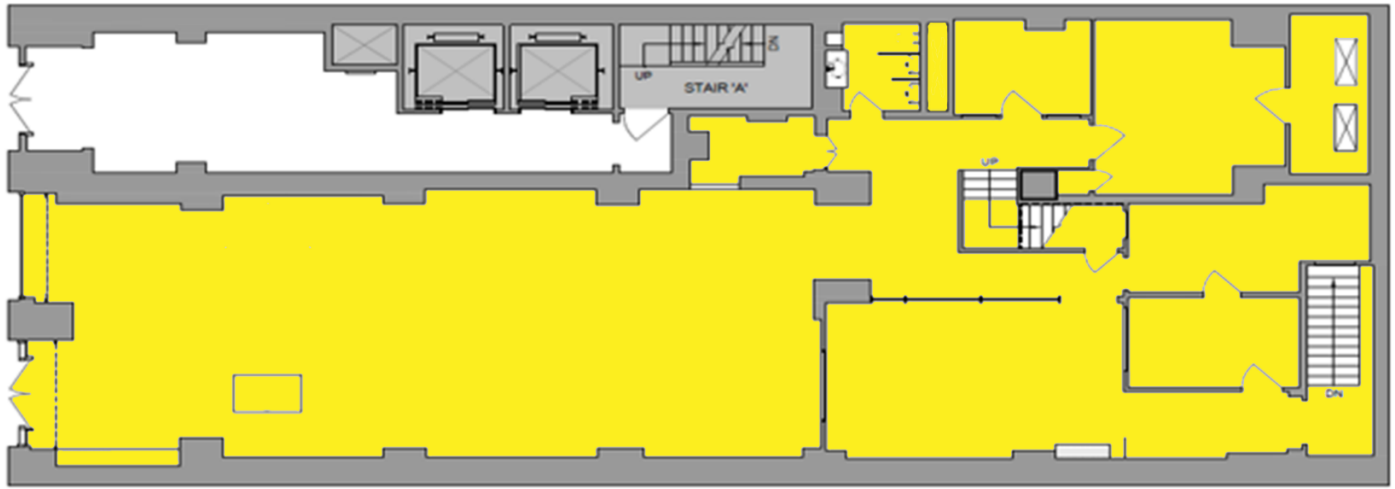
- Column Free Flagship Opportunity for Retail/ Medical/ Office Use
- 20 FT Ground Floor Ceiling Height
9 FT Lower Level Ceiling Height
- 12 million people visit Bryant Park annually
- Potential to install windows for air, light on the eastern facing wall

SPACE/AREA PHOTOS



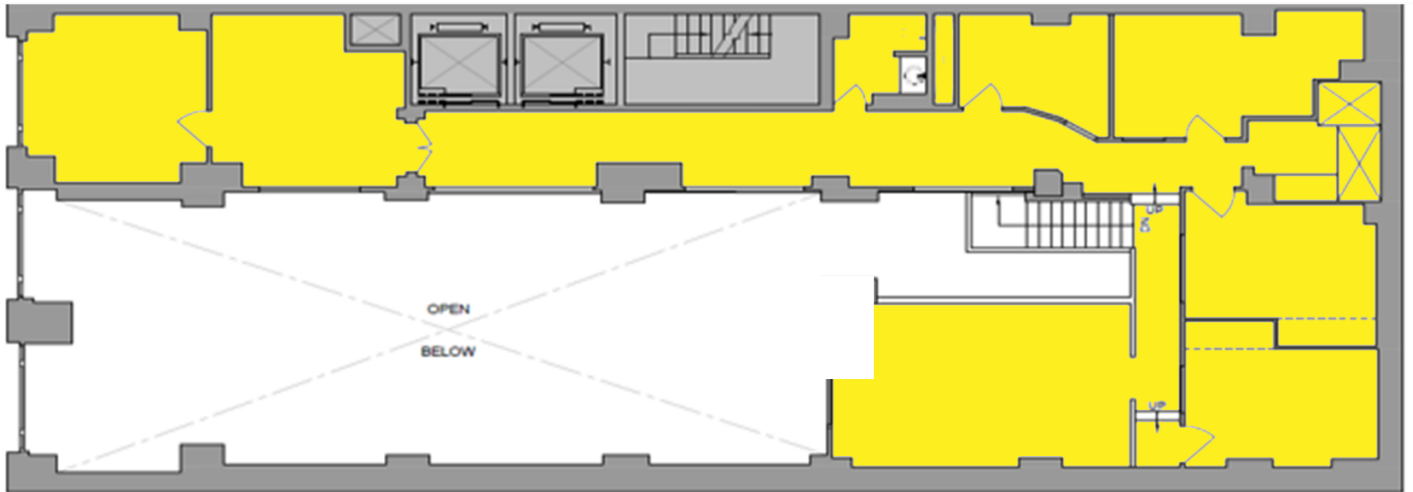
AS-BUILT FLOOR PLANS

WEST 39TH STREET



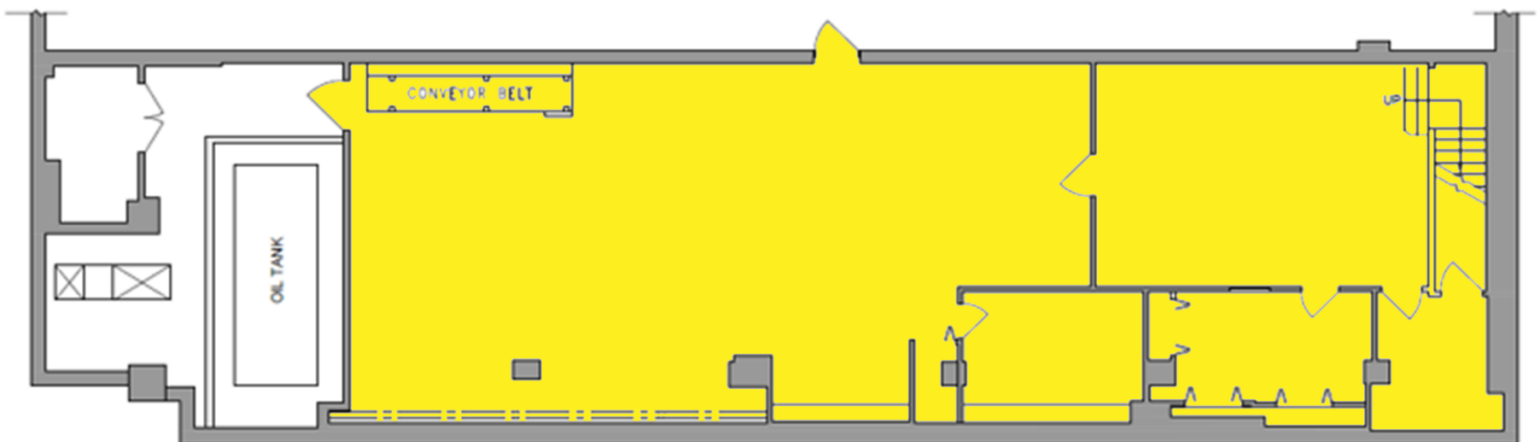
GROUND FLOOR

WEST 39TH STREET



MEZZANINE

WEST 39TH STREET



LOWER LEVEL

AREA MAP



For leasing information, please contact:



Jeffrey Zund
Executive Director / Leasing
212.519.2032
jzund@hspny.com

Brett Weiss
Senior Associate / Leasing
212.519.2041
bweiss@hspny.com

Vicki Freeman
Director/Leasing
212.519.2037
vfreeman@hspny.com

A Member of **NAI**Global

www.hspny.com

Although all information furnished regarding property for sale, rental, or financing is from sources deemed reliable, such information has not been verified and no express representation is made, nor is any to be implied as to the accuracy thereof, and it is submitted subject to errors, omissions, change of price, rental or other conditions, prior sale, lease or financing, or withdrawal without notice.