

6,200 - 75,574 SF FOR LEASE

5400 PORT ROYAL RD.

SPRINGFIELD, VA 22151



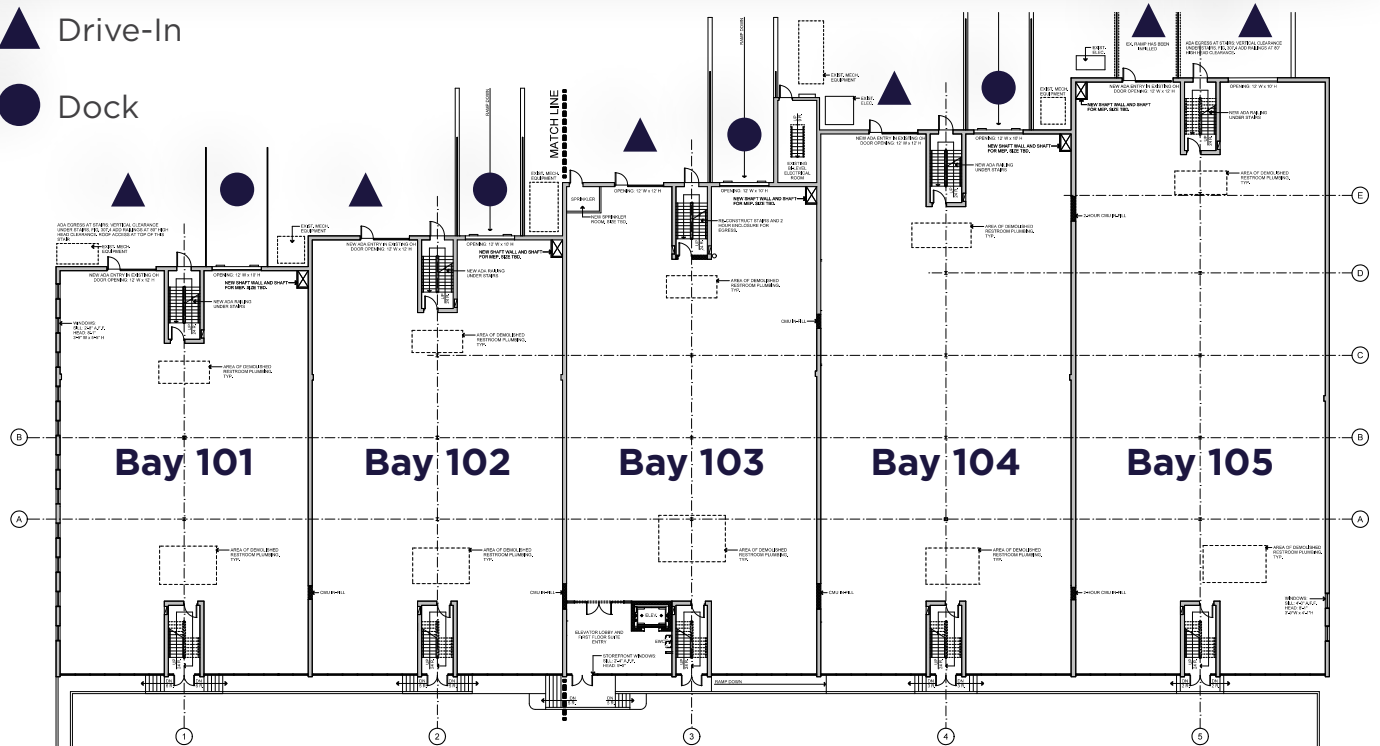
Warehouse Clear Height: 13' 6"
Loading: Docks and Drive-ins
Parking: Abundant
Available: December 2025

1st Floor Warehouse

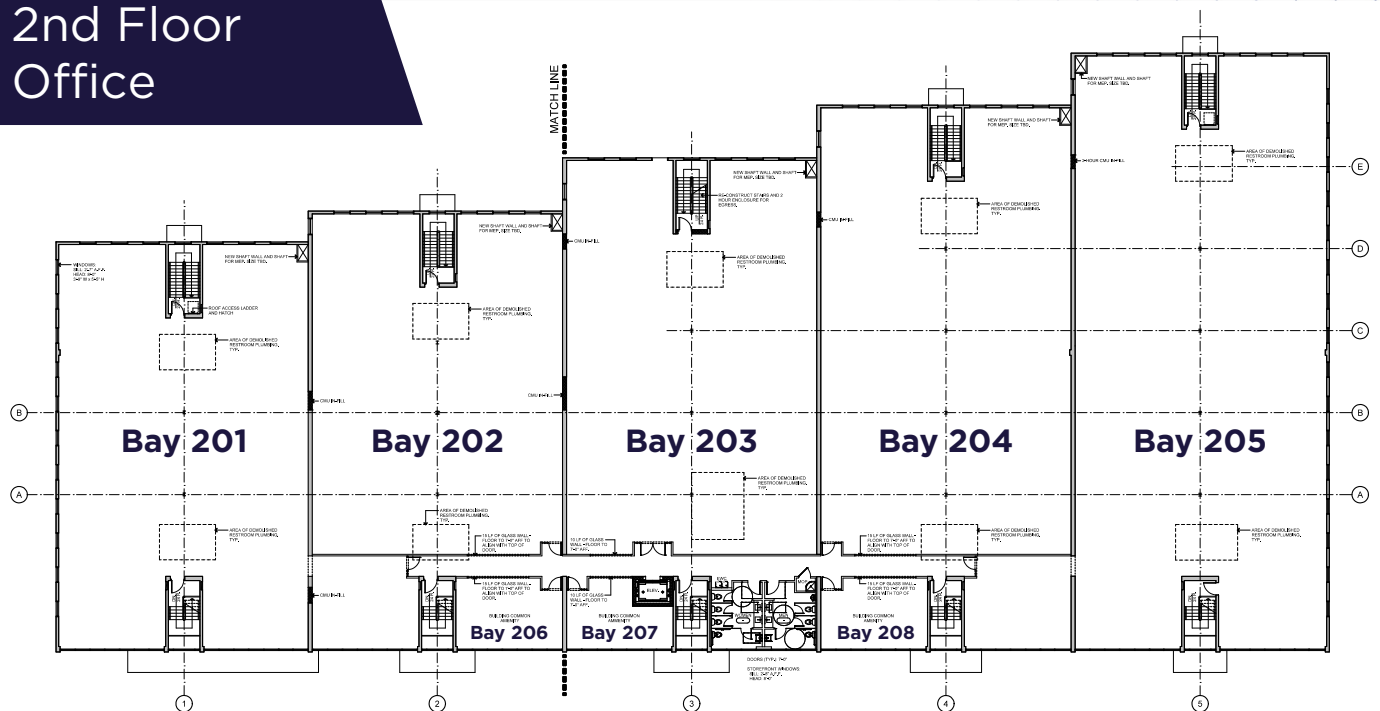
- Bay 101 – 6,200 SF
- Bay 102 – 6,665 SF
- Bay 103 – 7,471 SF
- Bay 104 – 8,266 SF
- Bay 105 – 9,185 SF

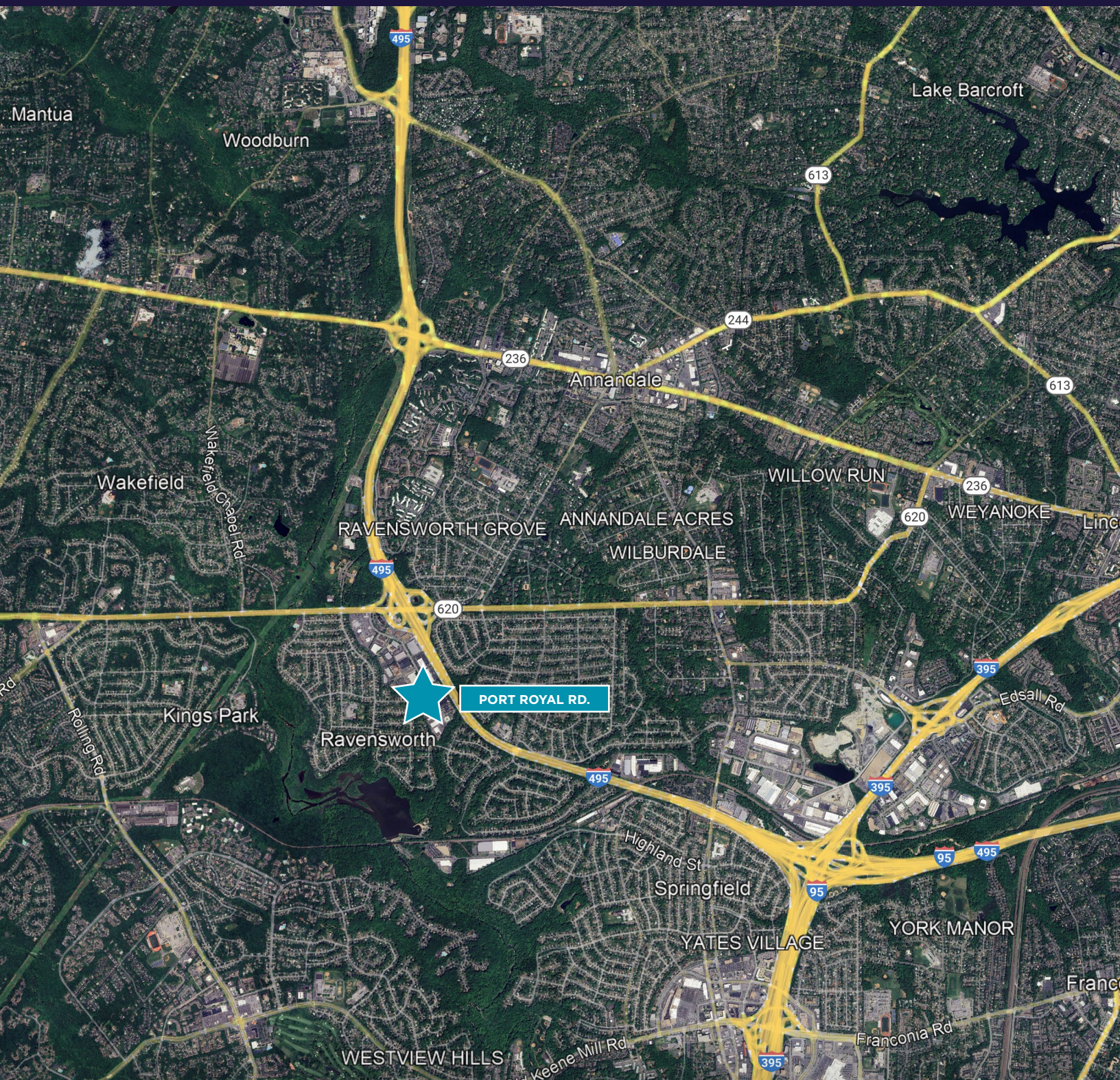
▲ Drive-In

● Dock



2nd Floor Office





**For more information, please
contact:**

Ed Zaptin
+1 703 847 2730
ed.zaptin@cushwake.com

Shane Keeton
+1 703 847 2784
shane.keeton@cushwake.com

Jon Lawrence
+1 703 847 2787
jon.lawrence@cushwake.com

©2025 Cushman & Wakefield. All rights reserved. The information contained in this communication is strictly confidential. This information has been obtained from sources believed to be reliable but has not been verified. NO WARRANTY OR REPRESENTATION, EXPRESS OR IMPLIED, IS MADE AS TO THE CONDITION OF THE PROPERTY (OR PROPERTIES) REFERENCED HEREIN OR AS TO THE ACCURACY OR COMPLETENESS OF THE INFORMATION CONTAINED HEREIN, AND SAME IS SUBMITTED SUBJECT TO ERRORS, OMISSIONS, CHANGE OF PRICE, RENTAL OR OTHER CONDITIONS, WITHDRAWAL WITHOUT NOTICE, AND TO ANY SPECIAL LISTING CONDITIONS IMPOSED BY THE PROPERTY OWNER(S). ANY PROJECTIONS, OPINIONS OR ESTIMATES ARE SUBJECT TO UNCERTAINTY AND DO NOT SIGNIFY CURRENT OR FUTURE PROPERTY PERFORMANCE.



**CUSHMAN &
WAKEFIELD**