

# 680 8TH STREET

SHOWPLACE SQUARE / DESIGN DISTRICT



## CREATIVE SHOWROOM & RETAIL SPACE FOR LEASE

PLEASE CONTACT FOR MORE INFORMATION:

JAY D. SHAFFER  
(415) 407-3997  
jshaffer@coltoncommercialsf.com  
License #: 01444640



BRYAN B. COLTON  
(415) 595-6959  
bryancolton@coltoncommercialsf.com  
License #: 02111407





STREET VIEW



PARKING



LOBBY



LOBBY

**680** 8TH STREET



JAY D. SHAFFER | 415.407.3997  
jshaffer@coltoncommercialsf.com  
License #: 01444640

BRYAN B. COLTON | 415.595.6959  
bryancolton@coltoncommercialsf.com  
License #: 02111407





## PROPERTY HIGHLIGHTS

HEART OF DESIGN DISTRICT LOCATION

FULL HVAC

ONSITE PARKING

ONSITE BUILDING MANAGEMENT

LOADING DOCKS

## AVAILABLE NOW:

SUITE 160

SIZE: 2,144 RSF +/-

RATE: \$24.00 MG

Ground floor show room / retail space

Large open area

High ceilings

Back office and storage area

Full HVAC

**680** 8TH STREET

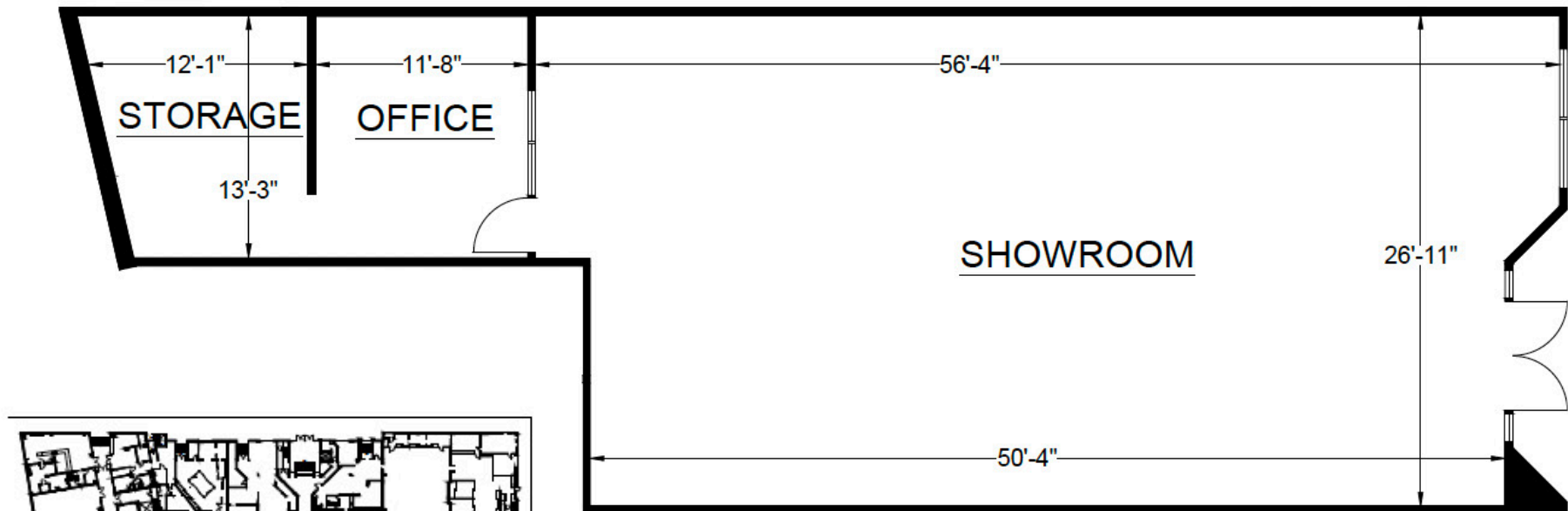


JAY D. SHAFFER | 415.407.3997  
jshaffer@coltoncommercialsf.com  
License #: 01444640

BRYAN B. COLTON | 415.595.6959  
bryancolton@coltoncommercialsf.com  
License #: 02111407

# SUITE 160

2,144 +/- RSF

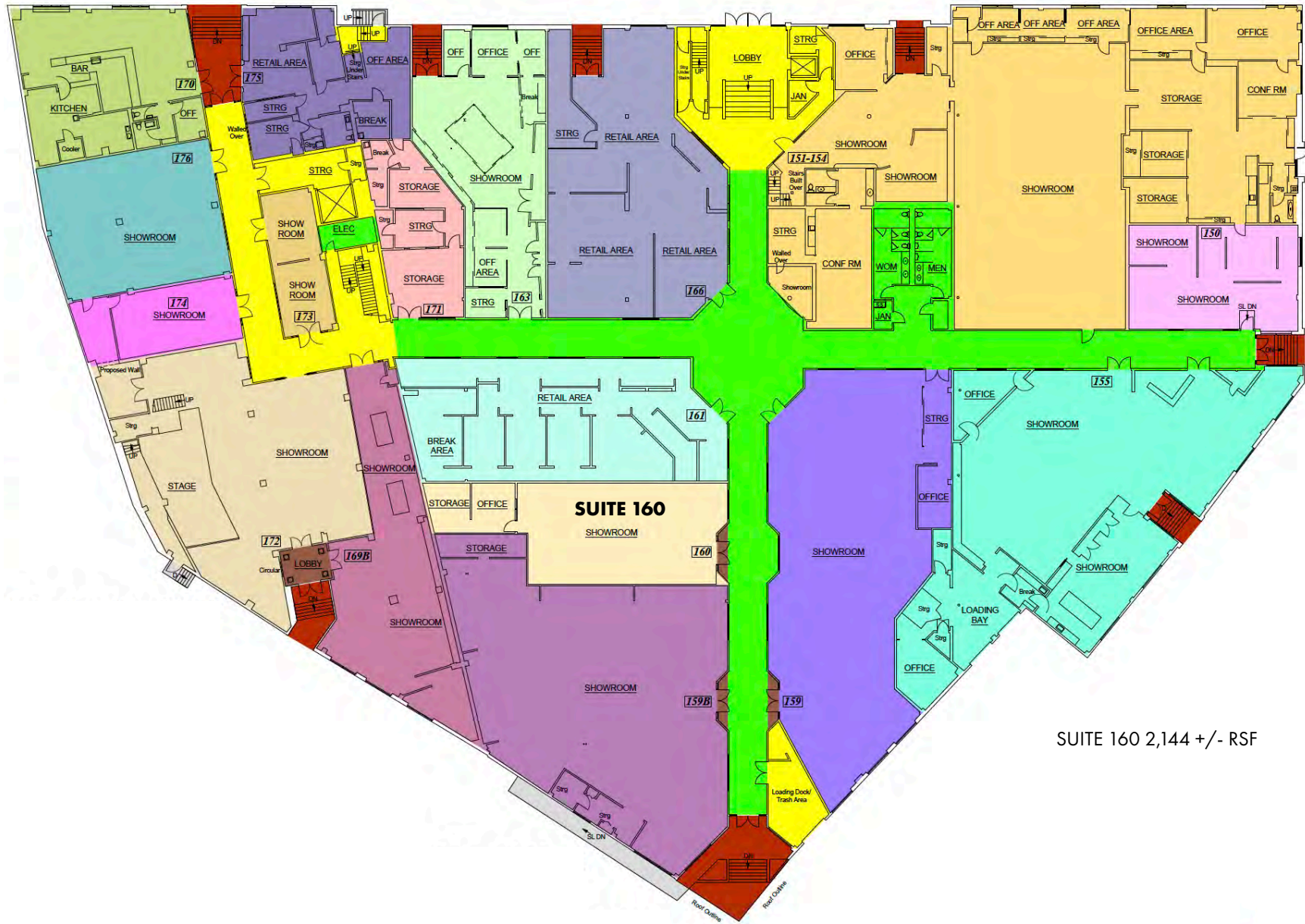


1ST FLOOR

SUITE 160 LOCATION



# 1ST FLOOR PLAN



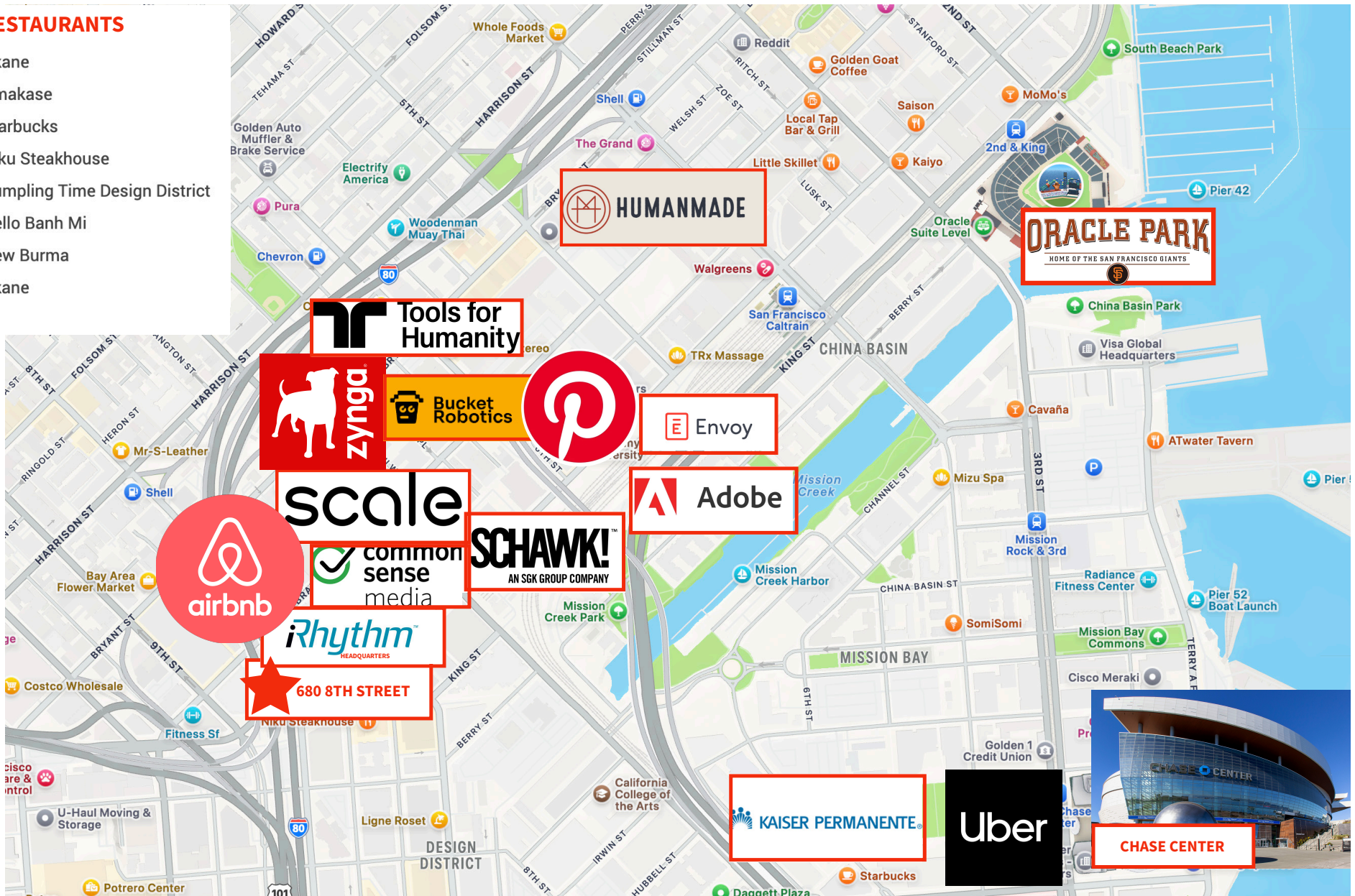
SUITE 160 2,144 +/- RSF



# NEIGHBORHOOD MAP

## RESTAURANTS

Okane  
Omakase  
Starbucks  
Niku Steakhouse  
Dumpling Time Design District  
Hello Banh Mi  
New Burma  
Okane



**680 8TH STREET**

**COLTON  
COMMERCIAL  
PARTNERS**

JAY D. SHAFFER | 415.407.3997  
jshaffer@coltoncommercialsf.com  
License #: 01444640

BRYAN B. COLTON | 415.595.6959  
bryancolton@coltoncommercialsf.com  
License #: 02111407