

# CORPORATE PARK WOODLANDS

210-240 Spring Hill Dr  
Spring, TX 77386

## Industrial For Lease

1,810 - 3,620 SF



Leasing Information:  
281.875.7800

**Robert Willard**   **SuAnna Sanchez**  
281.875.7811   281.875.7655  
rwillard@lpc.com   ssanchez@lpc.com

# Lincoln

16945 Northchase Drive  
Suite 150  
Houston, TX 77060

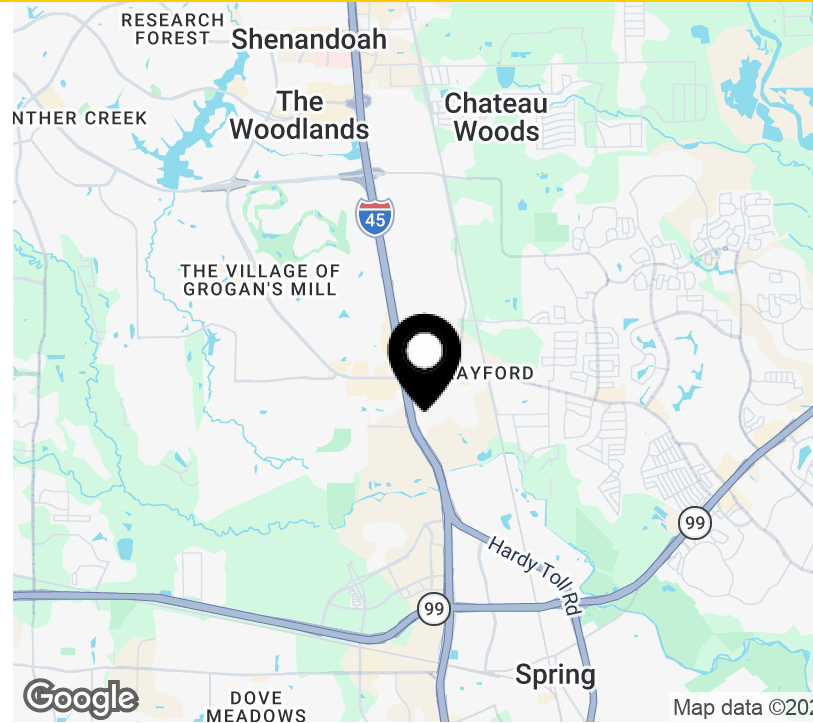
[www.lpc.com](http://www.lpc.com)

# CORPORATE PARK WOODLANDS

210-240 Spring Hill Dr | Spring, TX 77386

Industrial For Lease

1,810 - 3,620 SF



## Property Highlights

- The Woodlands/Conroe Submarket
- Great Access to Beltway 8 and Hardy Toll Road
- 13'-25' Clear Height
- 2,160 SF - 3,590 SF Suites Available
- Tenant Controlled HVAC
- Grade-Level and Dock Loading

## Availabilities

- Suite 105
- Suite 135
- Suite 320/325
- Suite 330
- Unit 415

## SF

- 2,160 SF
- 2,160 SF
- 3,620 SF
- 1,810 SF
- 2,700 SF

## Date Available

- Available Now
- Available Now
- Available Now
- Available Now
- Available Now

**Robert Willard**

281.875.7811  
rwillard@lpc.com

**SuAnna Sanchez**

281.875.7655  
ssanchez@lpc.com

**Lincoln**

# CORPORATE PARK WOODLANDS

210-240 Spring Hill Dr | Spring, TX 77386

Property Amenities

1,810 - 3,620 SF



**Robert Willard**

281.875.7811  
rwillard@lpc.com

**SuAnna Sanchez**

281.875.7655  
ssanchez@lpc.com

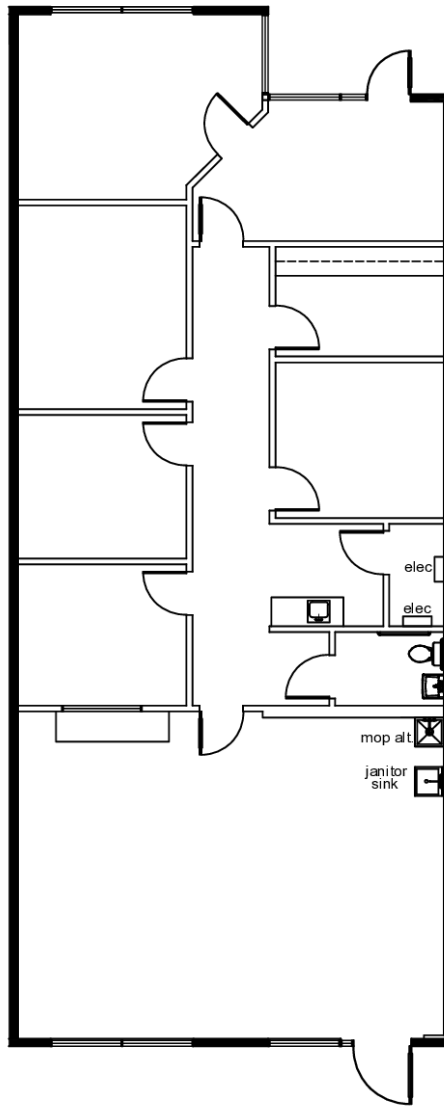
**Lincoln**

# CORPORATE PARK WOODLANDS

210-240 Spring Hill Dr | Spring, TX 77386

Suite 105

2,160 SF



Suite	Size	Description
Suite 105	2,160 SF	Available Now

**Robert Willard**   **SuAnna Sanchez**

281.875.7811  
rwillard@lpc.com

281.875.7655  
ssanchez@lpc.com

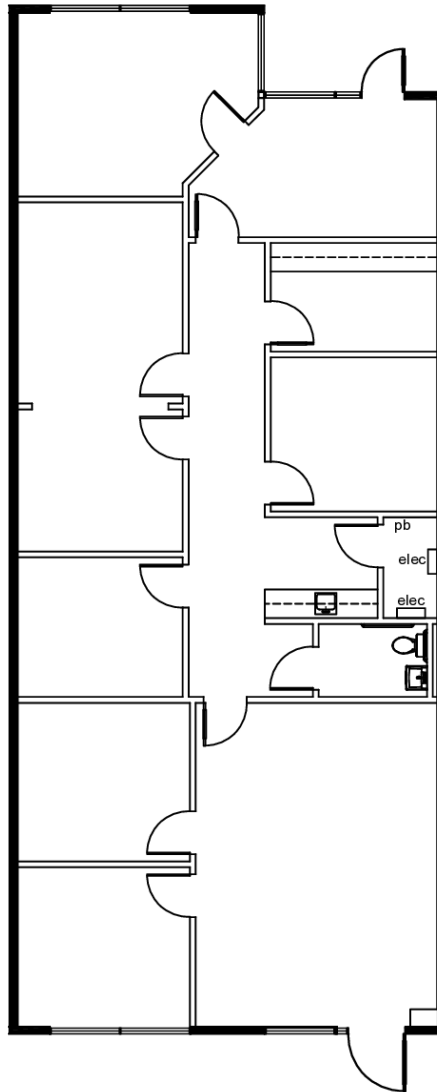
**Lincoln**

# CORPORATE PARK WOODLANDS

210-240 Spring Hill Dr | Spring, TX 77386

Suite 135

2,160 SF



Suite	Size	Description
Suite 135	2,160 SF	100% Office 8 Private Offices Open Office Area Tenant-Controlled HVAC Glass Storefront

**Robert Willard**   **SuAnna Sanchez**

281.875.7811  
rwillard@lpc.com

281.875.7655  
ssanchez@lpc.com

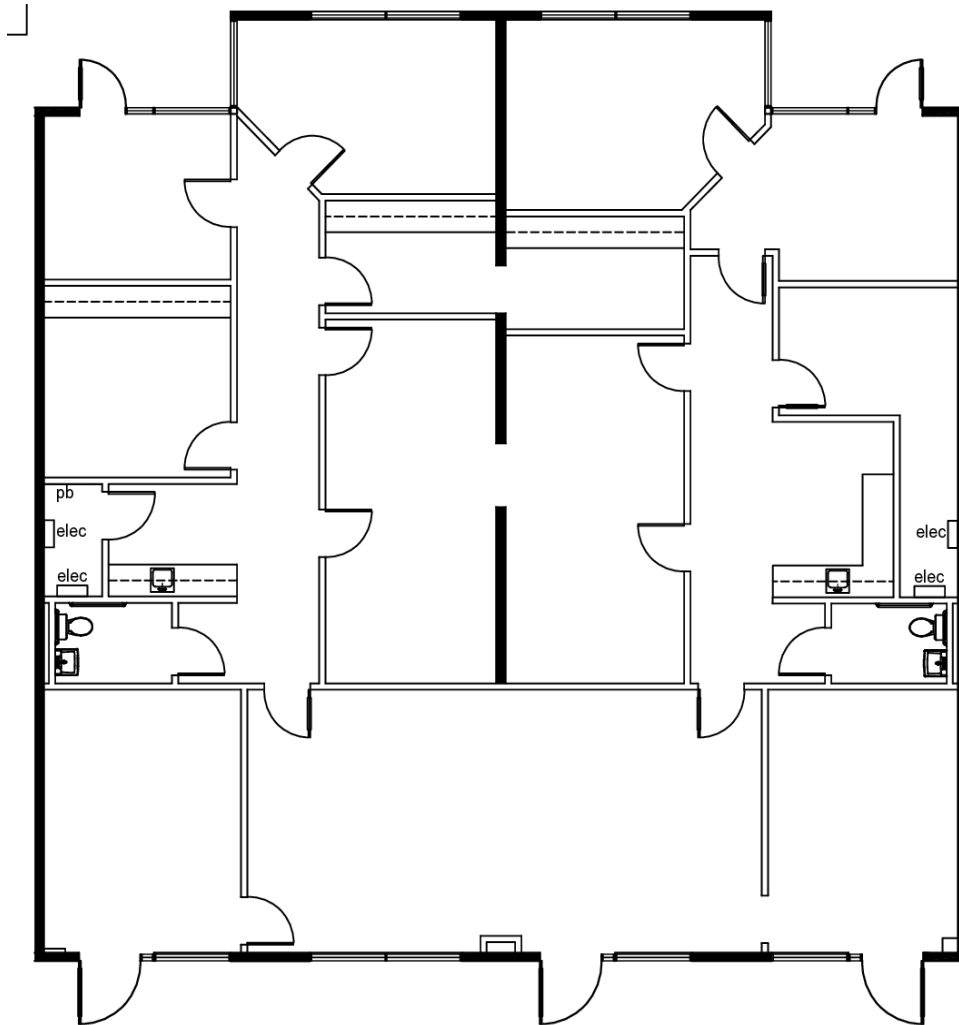
**Lincoln**

# CORPORATE PARK WOODLANDS

210-240 Spring Hill Dr | Spring, TX 77386

Suite 320/325

3,620 SF



Suite	Size	Description
Suite 320/325	3,620 SF	100% Office Open Office Area Tenant-Controlled HVAC Glass Storefront

**Robert Willard**   **SuAnna Sanchez**

281.875.7811  
rwillard@lpc.com

281.875.7655  
ssanchez@lpc.com

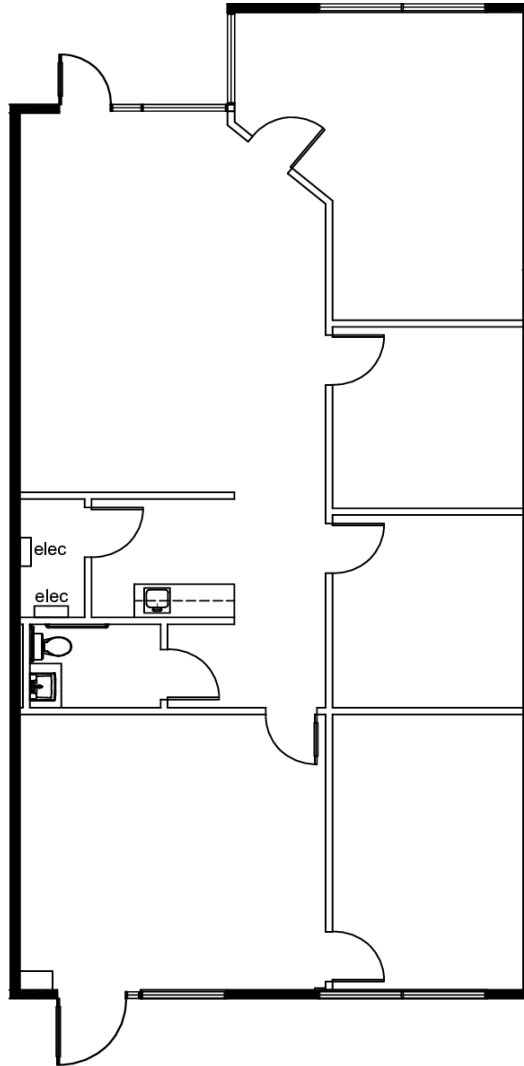
**Lincoln**

# CORPORATE PARK WOODLANDS

210-240 Spring Hill Dr | Spring, TX 77386

Suite 330

1,810 SF



Suite	Size	Description
Suite 330	1,810 SF	Available Now

**Robert Willard**   **SuAnna Sanchez**

281.875.7811  
rwillard@lpc.com

281.875.7655  
ssanchez@lpc.com

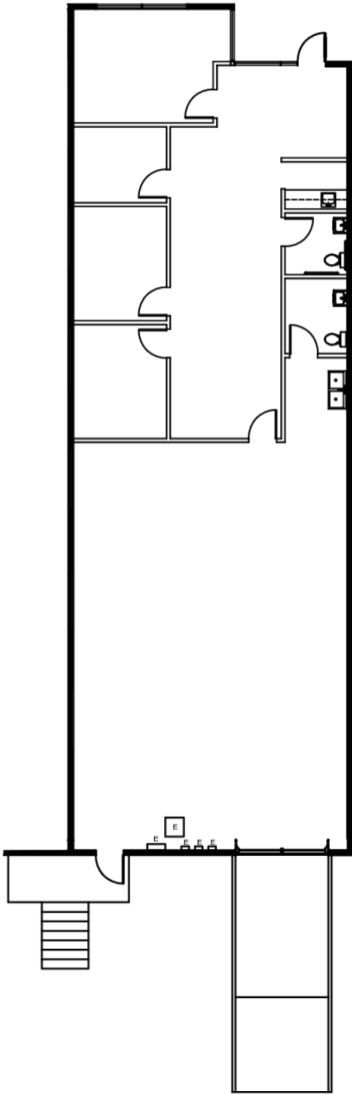
**Lincoln**

# CORPORATE PARK WOODLANDS

210-240 Spring Hill Dr | Spring, TX 77386

Suite 415

2,700 SF



Suite	Size	Description
Unit 415	2,700 SF	1,300 Office / 1,400 SF Warehouse

**Robert Willard**   **SuAnna Sanchez**  
281.875.7811   281.875.7655  
rwillard@lpc.com   ssanchez@lpc.com

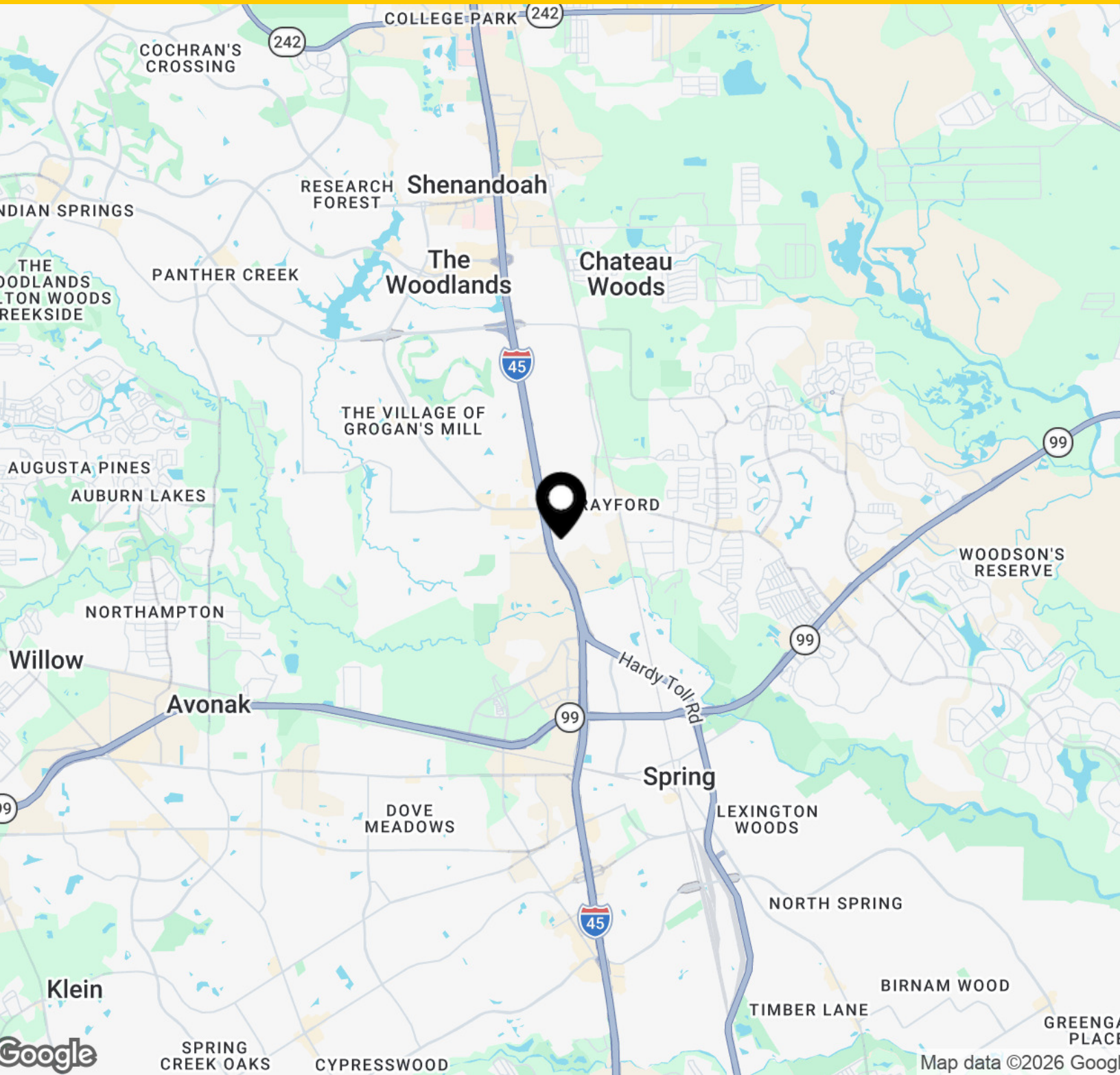


# CORPORATE PARK WOODLANDS

210-240 Spring Hill Dr | Spring, TX 77386

Map

1,810 - 3,620 SF



**Robert Willard**   **SuAnna Sanchez**

281.875.7811  
rwillard@lpc.com

281.875.7655  
ssanchez@lpc.com

**Lincoln**



# CORPORATE PARK WOODLANDS

210-240 Spring Hill Dr  
Spring, TX 77386

Leasing Information:  
281.875.7821

**Robert Willard**  
281.875.7811  
rwillard@lpc.com

**SuAnna Sanchez**  
281.875.7655  
ssanchez@lpc.com

## Lincoln

16945 Northchase Drive  
Suite 150  
Houston, TX 77060

[www.lpc.com](http://www.lpc.com)