

5420 & 5426 Brown Ave

(Lot 31B & Lot 32B)

St. Louis, MO 63115

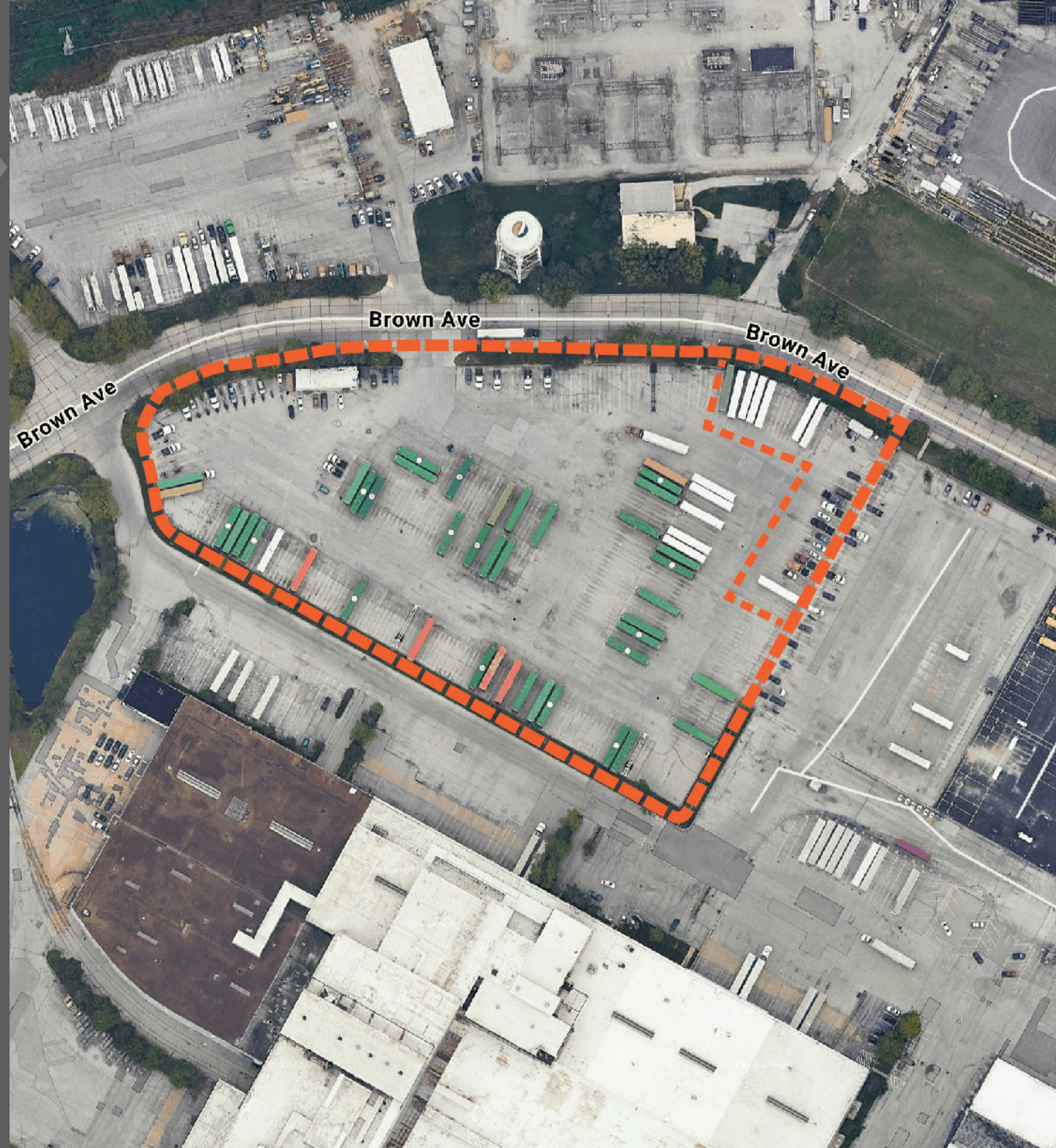
TRUCK/TRAILER PARKING FOR LEASE

- 6.641 Acres (Divisible to 5.78 Acres)
- Located in Union Seventy Center Business Park
- 24/7 Security Patrolled Park
- Paved & Lighted
- Lease Rate: \$3,500 Per Acre Monthly, NNN

FOR MORE INFORMATION CONTACT:

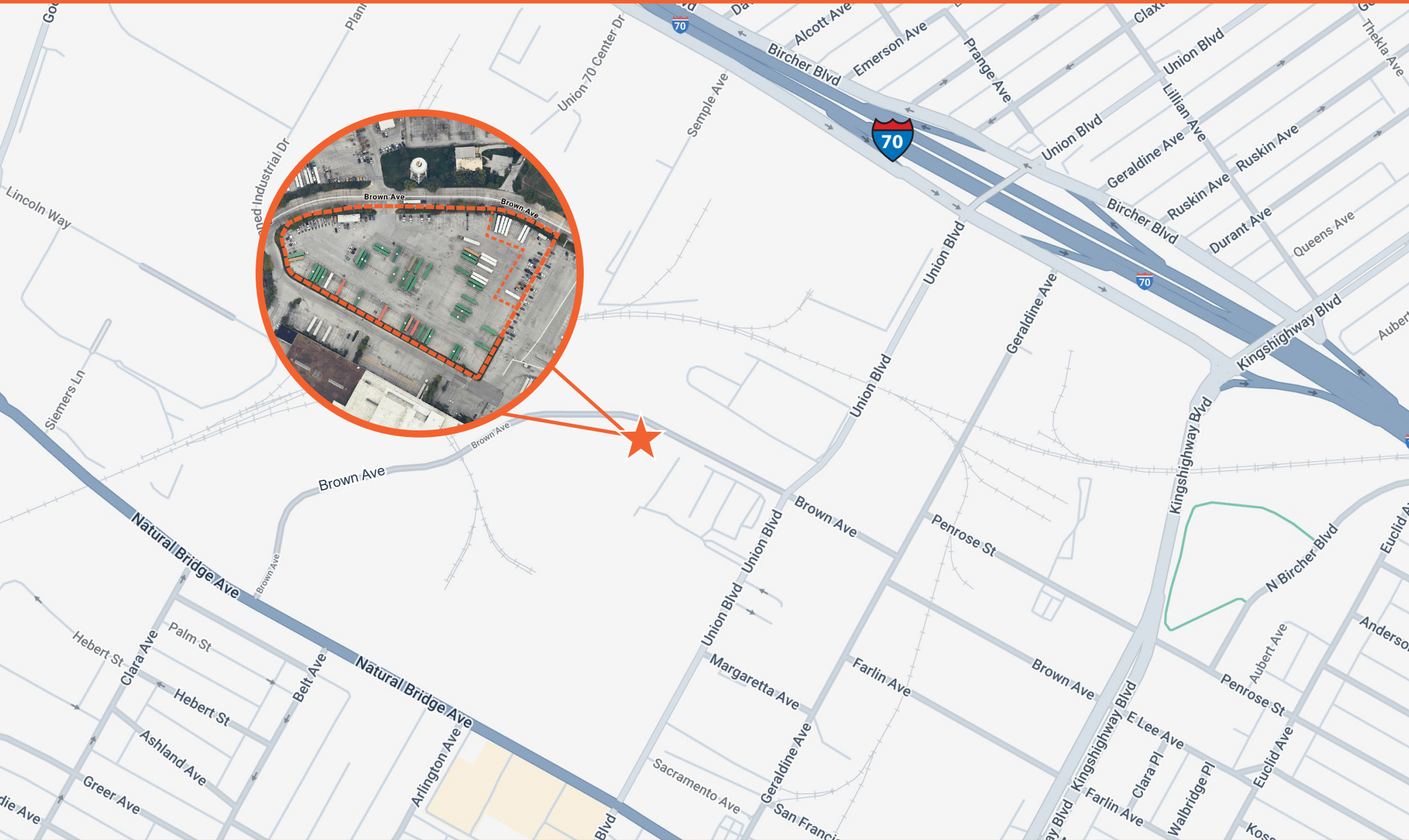
Louis Copilevitz | (314) 746-1451
lcopilevitz@gershmancre.com

Lou Panopoulos | (314) 746-1428
lpanopoulos@gershmancre.com





5420 & 5426 Brown Ave



Louis Copilevitz | (314) 746-1451
lcopilevitz@gershmancre.com

Lou Panopoulos | (314) 746-1428
lpanopoulos@gershmancre.com