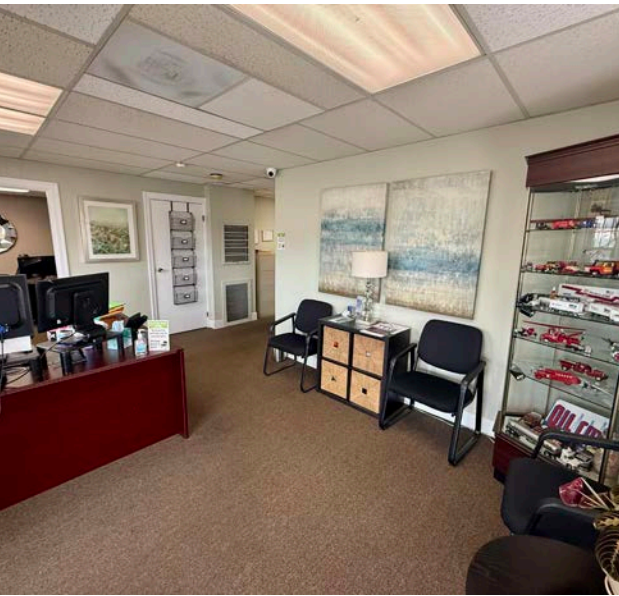
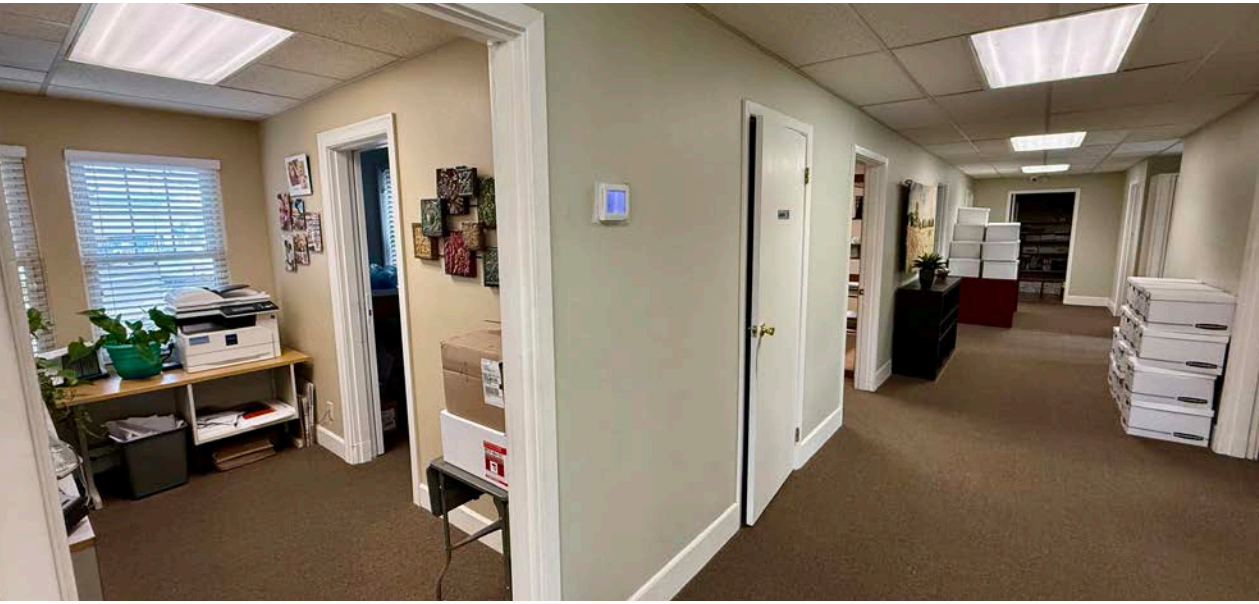


FOR SALE

# 5402 SE FOSTER RD

PORTLAND, OR





*High-visibility, move-in ready office building on Foster Road!*

NRSF	2,260 (+2,260 Basement/Storage)
CONSTRUCTION	Wood Frame / Brick Construction
SITE AREA	0.11
YEAR BUILT	1930
VISIBILITY	High visible corner lot with great exposure
ZONING	Zoning: CM2 (Commercial Mixed 2) - Specific allowable uses include: retail sales and services, office space, household living, vehicle repair and limited manufacturing uses.
LOCATION	Numerous shopping and restaurants nearby
SALE PRICE	\$725,000

*4,520 SF*

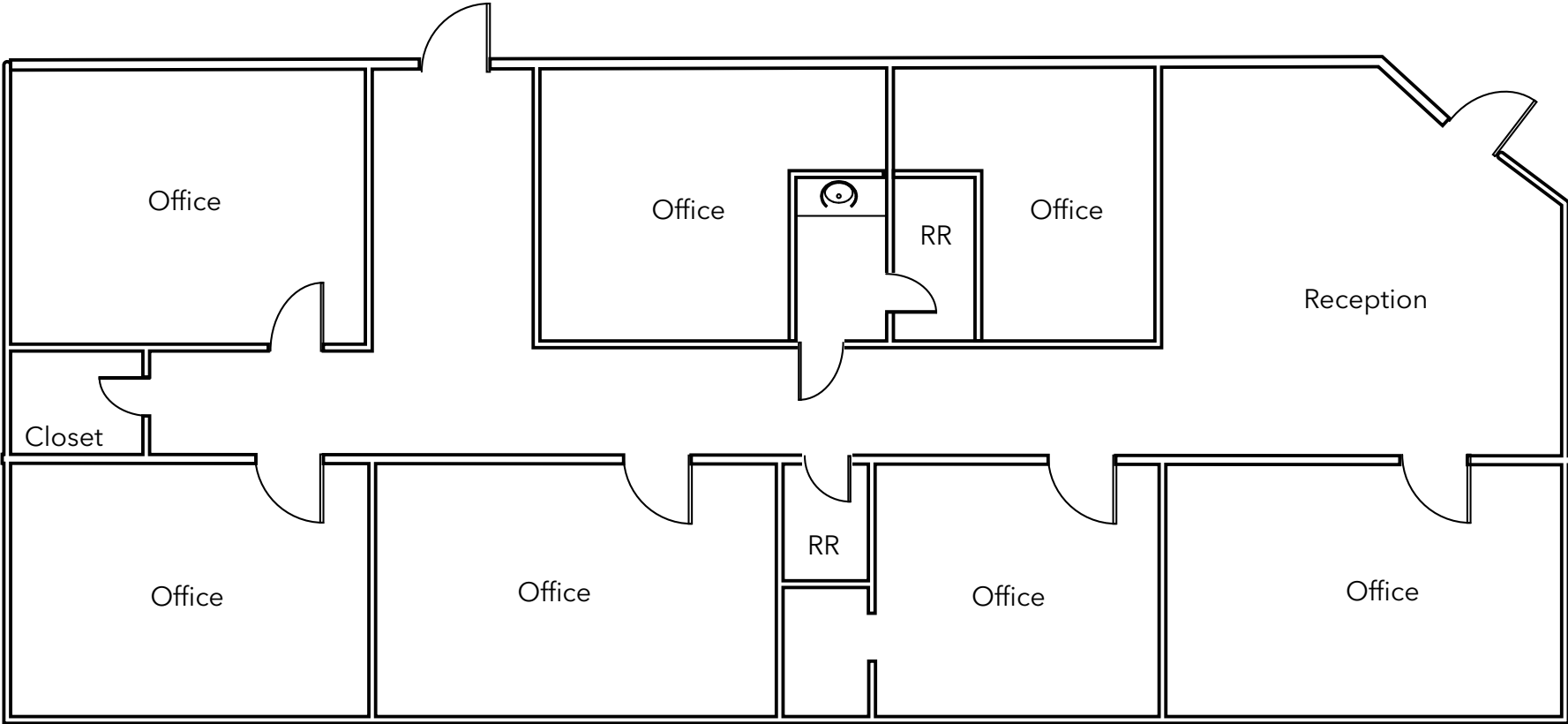
TOTAL SIZE AVAILABLE

*\$725K*

SALE PRICE



# SITE PLAN



\*Not drawn to scale

5402 SE FOSTER RD

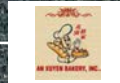
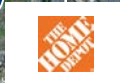
MODA CENTER



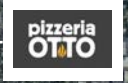
Downtown

PORTLAND

MT. TABOR PARK



SUBJECT PROPERTY



AVAILABLE FOR SALE

KIDDER MATHEWS

5402 SE  
FOSTER RD

*Exclusively listed by*

**STEVE BOWERS**

503.721.2715

steve.bowers@kidder.com

**KIDDER.COM**

This information supplied herein is from sources we deem reliable. It is provided without any representation, warranty, or guarantee, expressed or implied as to its accuracy. Prospective Buyer or Tenant should conduct an independent investigation and verification of all matters deemed to be material, including, but not limited to, statements of income and expenses. Consult your attorney, accountant, or other professional advisor.

**km** Kidder  
Mathews