

Land For Sale



Steve Eustis Co

1207 S. Bryant Suite A San Angelo, TX 76903 | 325-653-1489

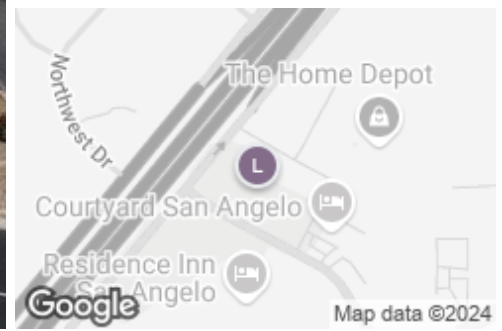
1 Acre Retail Parcel - Southwest San Angelo

Land: Retail For Sale

2532 Southwest Blvd, San Angelo, TX, 76901

Prepared on November 11, 2024

1 of 1 Listings



Listing Details | Land For Sale

Secondary Uses	Retail
Total Available Space	1.02 Acres
Asking Price	\$578,000
Listing Price Per SF	-
List Price Per Acre	-
Cap Rate (Actual)	-
Available Date	Now
Days On Market	346 days

Date Listed	12/01/2023
Last Modified	11/11/2024
Listing ID	24684856
Parking Spaces	-
Electric Service	-
Water	-
Sanitary Sewer	-

Description

1.022 Acres (140X318) located just off Houston Harte Expressway (HWY 67) surrounded by prime retail and a cluster of hotels, ready for immediate development. Located next door to Cavender's Boots and surrounded by Spring Hill, Candlewood, Holiday Inn Express, Comfort, Courtyard and Residence Inn. Construction of the new Smashers Pickleball Facility has just been announced directly across the street. This would make an ideal location for a restaurant and/or a variety of retail uses.

Property Features

Location Details

Address	2532 Southwest Blvd, San Angelo, TX...
Zoning	CG
County	Tom Green

Parcels	R000101782
Name	1.02 Acre Retail Pad - Southwest San ...

Building Details

Sub Type	Retail	Electricity	-
Building Size	44,518 SF	Water	-
Land Size	1.02 Acres / 44,431 SF	Sanitary Sewer	-

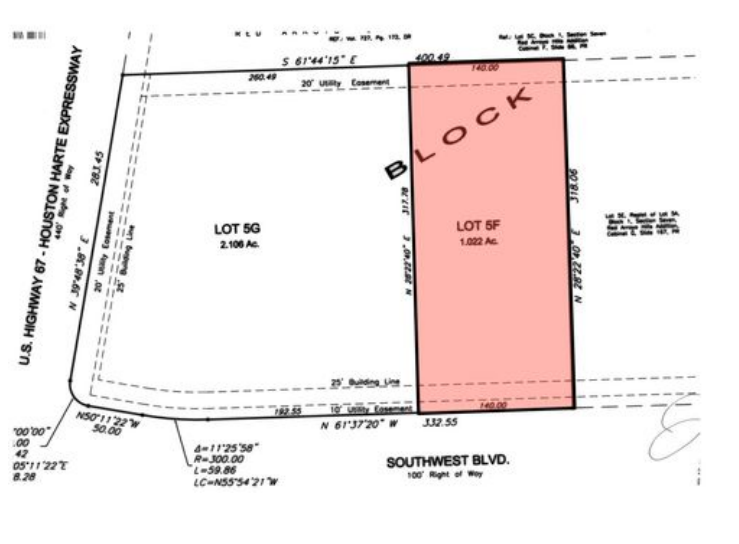
Property Listings

1 Listing | 1.02 Acres | \$578,000

Type	Space Use	Suite	Available Space	Rate	Price Per Acre	Available
For Sale	Land	-	1.02 Acre	\$578,000	\$566,666.67	Now

Additional Photos







Contact



Brandon K Sanders

325-653-1489

brandon@steveeustisrealestate.com



Steve Eustis Co