



FOR LEASE

Contact:

Jeff Barnes

Executive Vice President
+1 408 218 3366
jeff.barnes@colliers.com
Lic. No. 00883278

1745 San Felipe Road Hollister , CA

1,500 to 3,000 SF Industrial Units Available

Units 1-2

- ±1,500 to ±3,000 SF
- 400 amps of power
- 2 grade level doors
- 4/1000 parking
- \$1.15 NNN

Unit 4

- ±1,500 SF industrial
- 150 amps of power
- 1 grade level door
- 4/1000 parking
- \$1.15 NNN

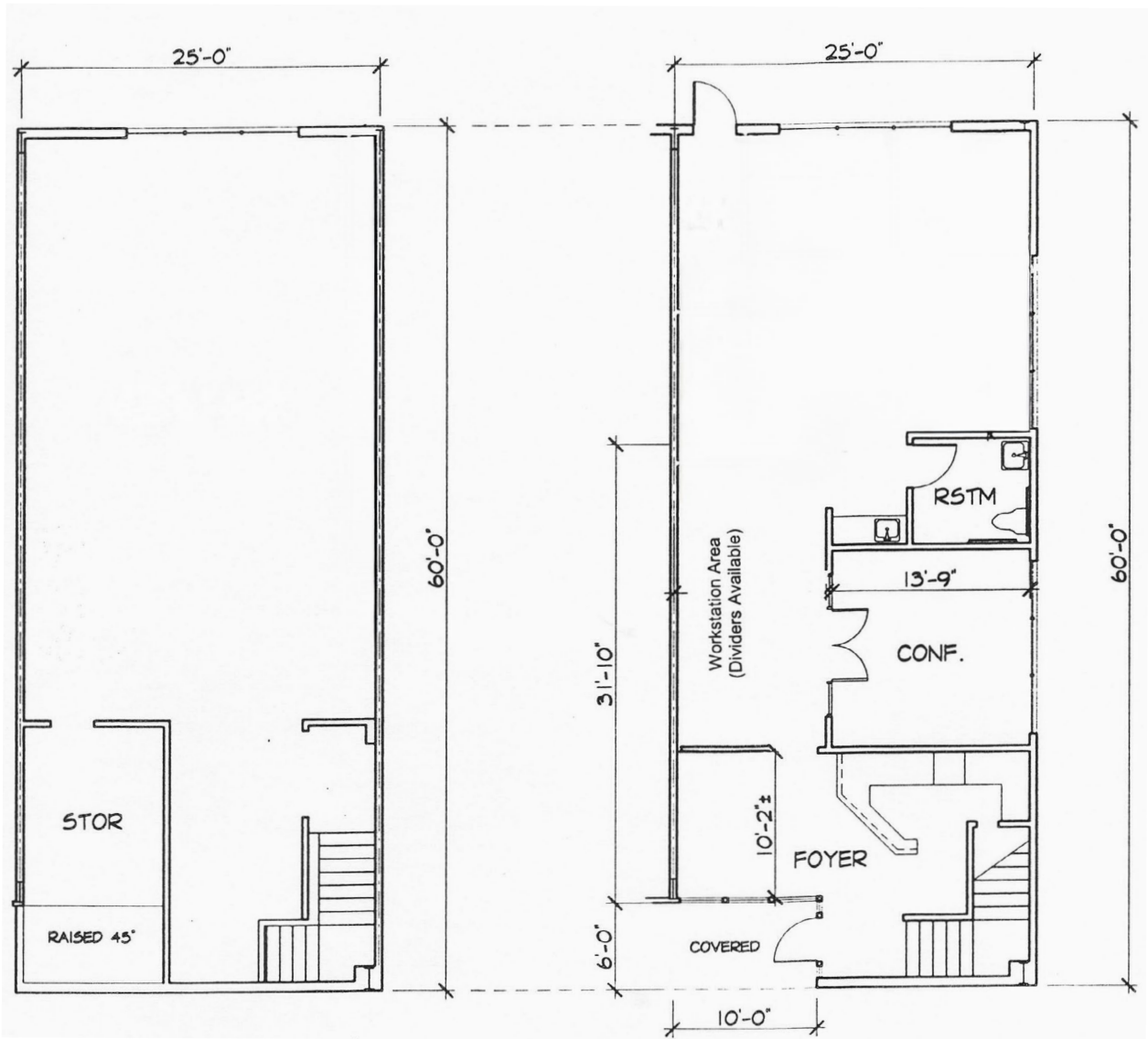
8070 Santa Teresa Blvd
Suite 220
Gilroy, CA 95020
P: +1 408 282 3800
F: +1 408 842 1141
colliers.com/siliconvalley

Copyright © 2025 Colliers International.

Information herein has been obtained from sources deemed reliable, however its accuracy cannot be guaranteed. The user is required to conduct their own due diligence and verification.

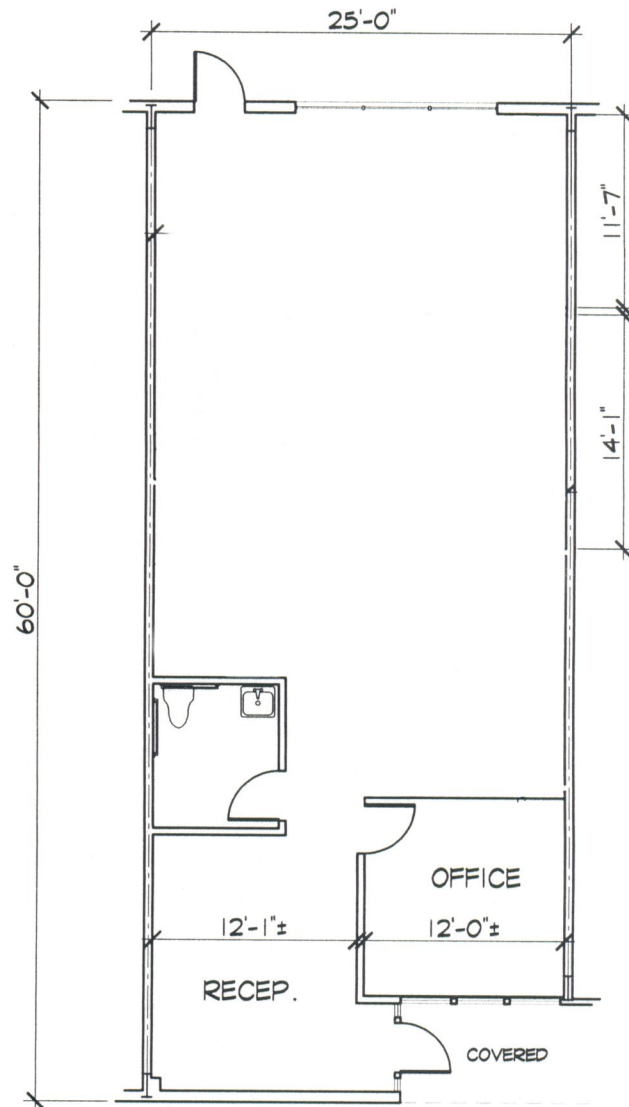
Property Drawings

Unit 1



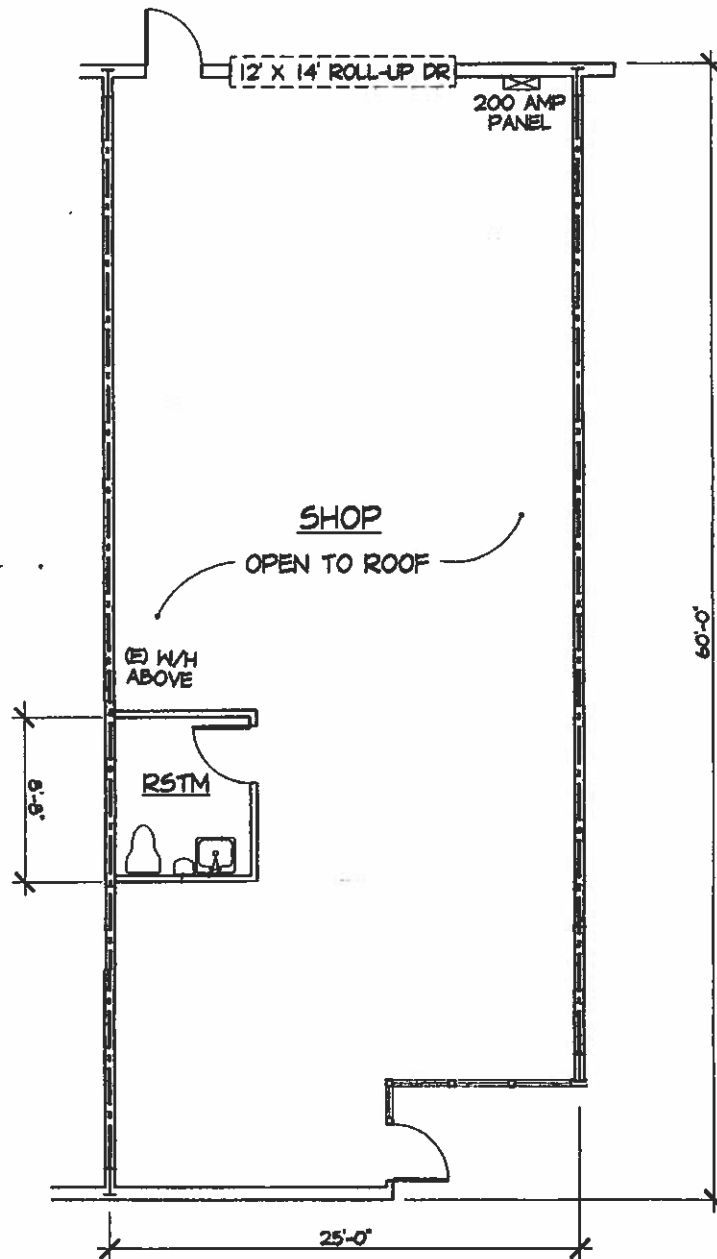
Property Drawings

Unit 2



Property Drawings

Unit 4



1745 San Felipe Road | For Lease



Contact:

Jeff Barnes

Executive Vice President
+1 408 218 3366
jeff.barnes@colliers.com
Lic. No. 00883278

This document has been prepared by Colliers International for advertising and general information only. Colliers International makes no guarantees, representations or warranties of any kind, expressed or implied, regarding the information including, but not limited to, warranties of content, accuracy and reliability. Any interested party should undertake their own inquiries as to the accuracy of the information. Colliers International excludes unequivocally all inferred or implied terms, conditions and warranties arising out of this document and excludes all liability for loss and damages arising there from. This publication is the copyrighted property of Colliers International and/or its licensor(s). ©2025. All rights reserved.

8070 Santa Teresa Blvd
Suite 220
Gilroy, CA 95020
P: +1 408 282 3800
F: +1 408 842 1141

