

4200 Parliament Place

FOR LEASE

LANHAM, MARYLAND 20706
PRINCE GEORGE'S COUNTY



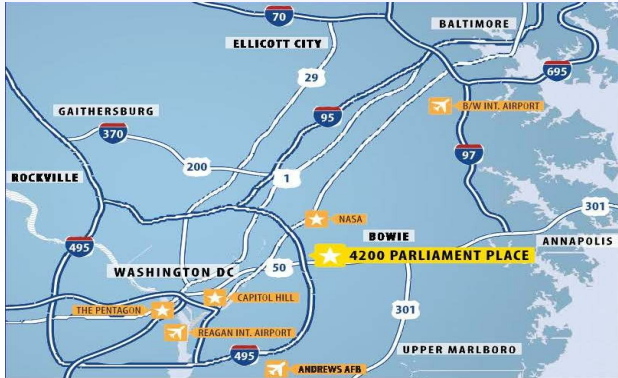
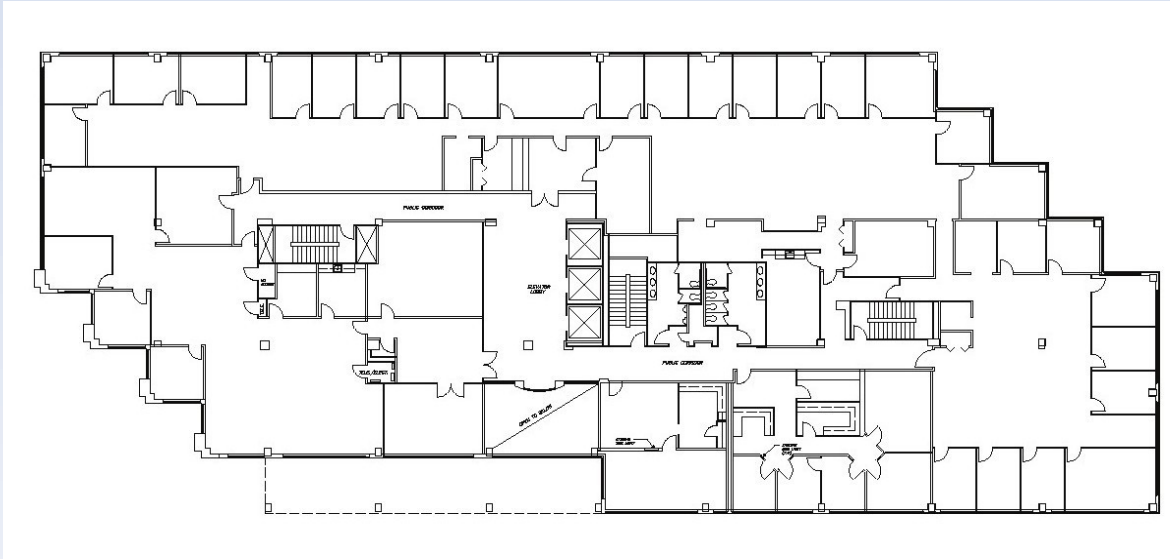
Building Features

4200 Parliament Place is a 122,000 SF Six-Story, Class A office building, strategically located near the intersection of the Capital Beltway (I-495) and Route 50.

- This premier property features an impressive design with 12 corner offices per floor, excellent visibility, and numerous nearby amenities.
- Abundant surface parking with reserved covered parking available
- T1 lines by Sprint and AT&T, as well as FiOS
- On-site vending area
- First floor men and women's locker rooms with shower



Typical Floor Plan



Location Proximity

- Immediate Access to the Capital Beltway and Route 50
- 30 minutes to Washington, D.C.
- Minutes to Amtrak, MARC and Metro services
- Vista Gardens Shopping Center nearby includes shopping, a grocery store, Starbucks, branch bank, etc..



To see more properties like this one,
please visit our website: www.cregllc.com

1343 ASHTON ROAD, SUITE B, HANOVER, MD 21076
main (410) 787-8799 • fax (410) 787-8872

CHRIS MURRAY
443.883.8173
cmurray@cregllc.com

MATT LARAWAY, SIOR
443.883.8180
mlaraway@cregllc.com