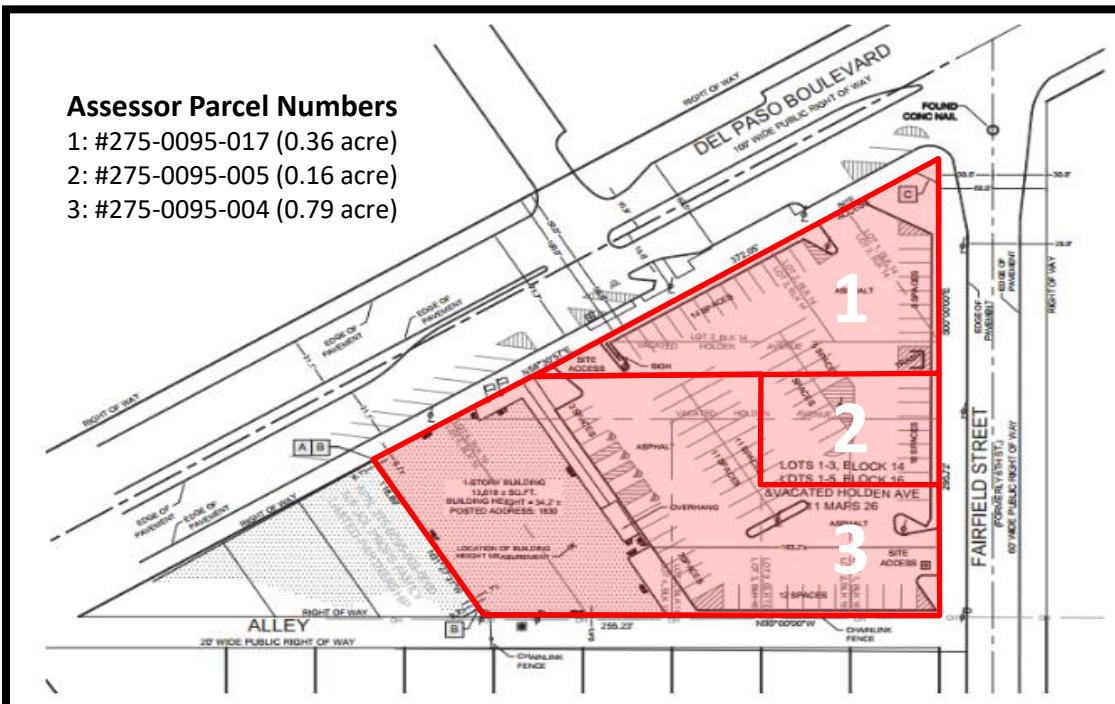
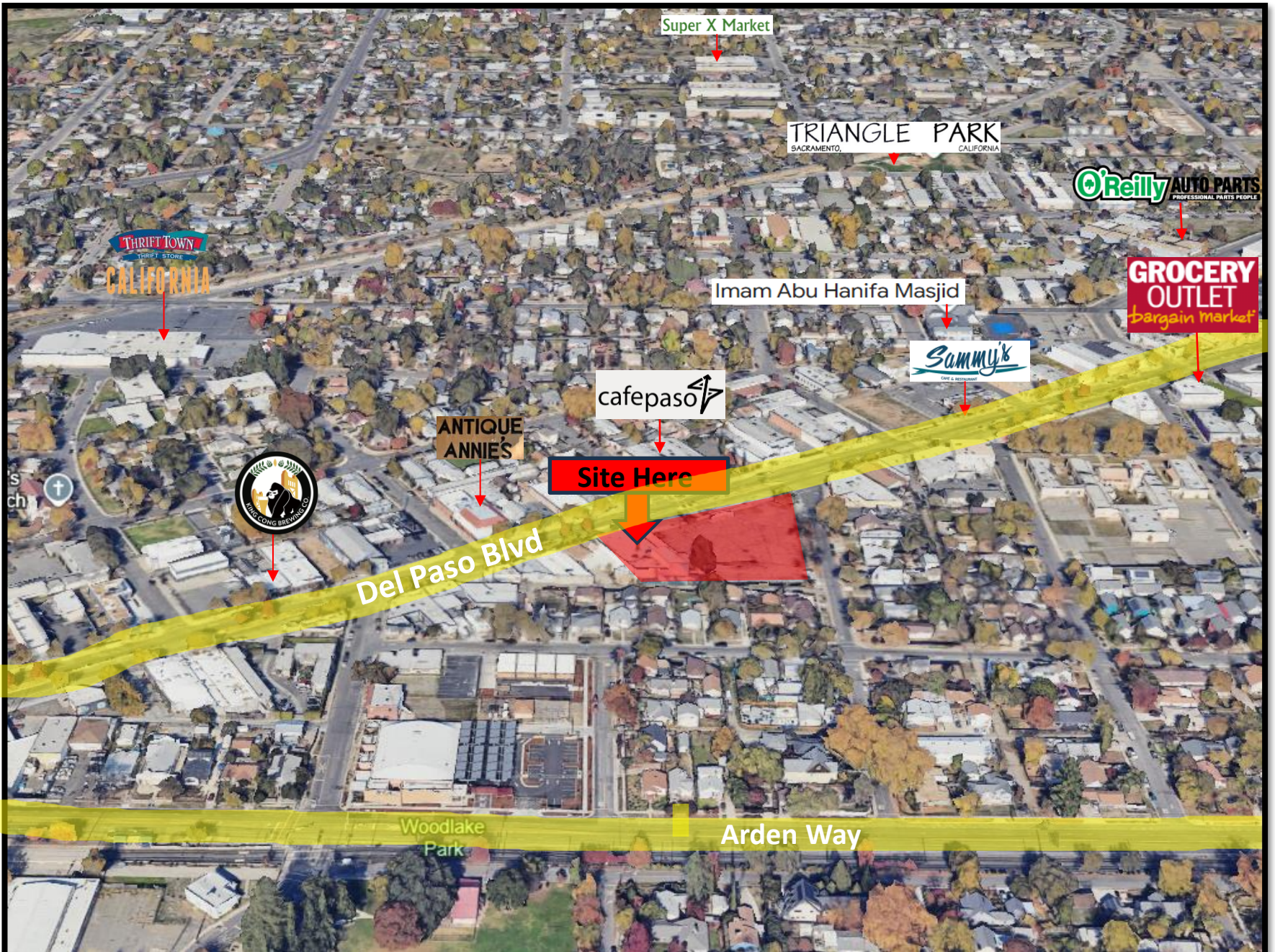


Vacant Land | Former Bank of America

1.3 acres | 1830 & 1922 Del Paso Blvd | Sacramento, CA



Assessor Parcel Numbers

- 1: #275-0095-017 (0.36 acre)
- 2: #275-0095-005 (0.16 acre)
- 3: #275-0095-004 (0.79 acre)

Property Highlights

- Price:** Undisclosed (call agent)
- Parcel size:** +/- 1.31 acres (3 parcels)
- APNs:** # 275-0095-004, 005, 017
- Parking:** Approximately 92 paved spaces
- Signage:** 25' pole sign facing Del Paso Blvd
- Hard Corner:** Del Paso Blvd & Fairfield St.
- Location:** Close to Downtown Sacramento and Capital City Freeway
- Zoning:** C-2 (General Commercial) SPD
- Environmental:** Clean Phase I Report



The information contained herein has been obtained from sources deemed reliable, but accuracy is not guaranteed. JACKS Commercial Real Estate has not verified it and makes no guarantee, warranty or representation about it.

Brian Jacks | 916-837-3456 | www.JacksCommercial.com | DRE Lic #02088254