

**NOW LEASING**



Delivery Q4 2027



# WILLOWBROOK CENTER

NWC OF WEST VILLAGES PKWY  
AND MANASOTA BEACH ROAD

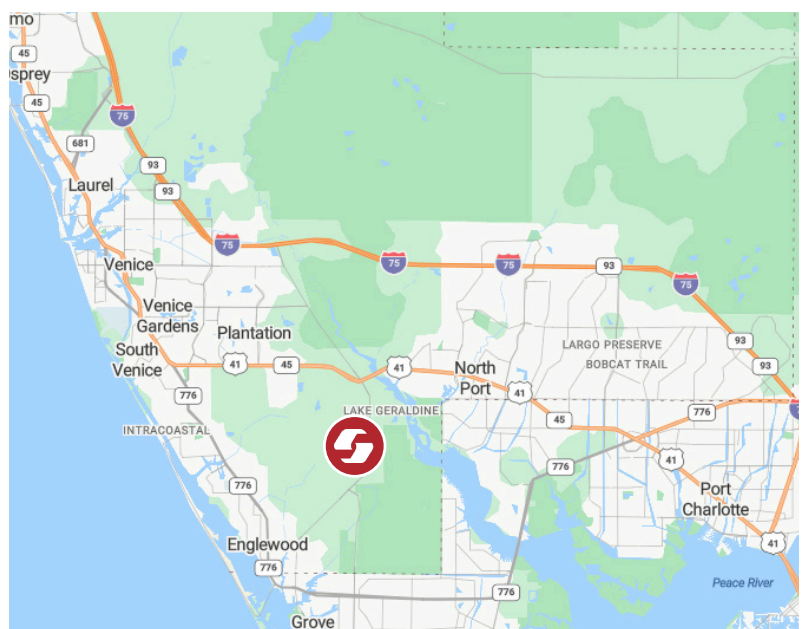
WELLEN PARK (VENICE), FL

**JESSICA MORENO**

Director of Leasing

800-940-6000

Jessica.Moreno@sembler.com





## PROPERTY HIGHLIGHTS

Positioned in the heart of Wellen Park, this Publix-anchored center features an approved flagship prototype with the “Pours” craft beer and wine concept, expanded grab-and-go offerings, and an interior café, complemented by 14,000 SF of small-shop space, Publix Liquors, and five outparcels. Developed in partnership with Wellen Park's master developer, this center will serve a thriving, high-income community with strong year-round population growth and regional connectivity.

- Located in Wellen Park, #8 on list of the Nation’s Top-Selling Master-Planned Communities
- 30,000+ homes in trade area with an estimated 60,000 residents at full buildout
- 1.5 miles to CoolToday Park, the Atlanta Braves spring training facility
- Direct connectivity to I-75 and major corridors serving Sarasota, Venice, North Port, and Port Charlotte
- Strong year-round population with average HH income of \$127K within 3 miles
- The center is adjacent to the Wellen Park Golf & Country Club, enhancing daily and destination traffic

## DEMOGRAPHICS



### POPULATION

- 3 MILES 9,181
- 5 MILES 51,102
- 7 MILES 126,203



### TOTAL HOUSEHOLDS

- 3 MILES 4,653
- 5 MILES 25,460
- 7 MILES 60,776



### HH INCOME

- 3 MILES \$127,151
- 5 MILES \$114,762
- 7 MILES \$108,722

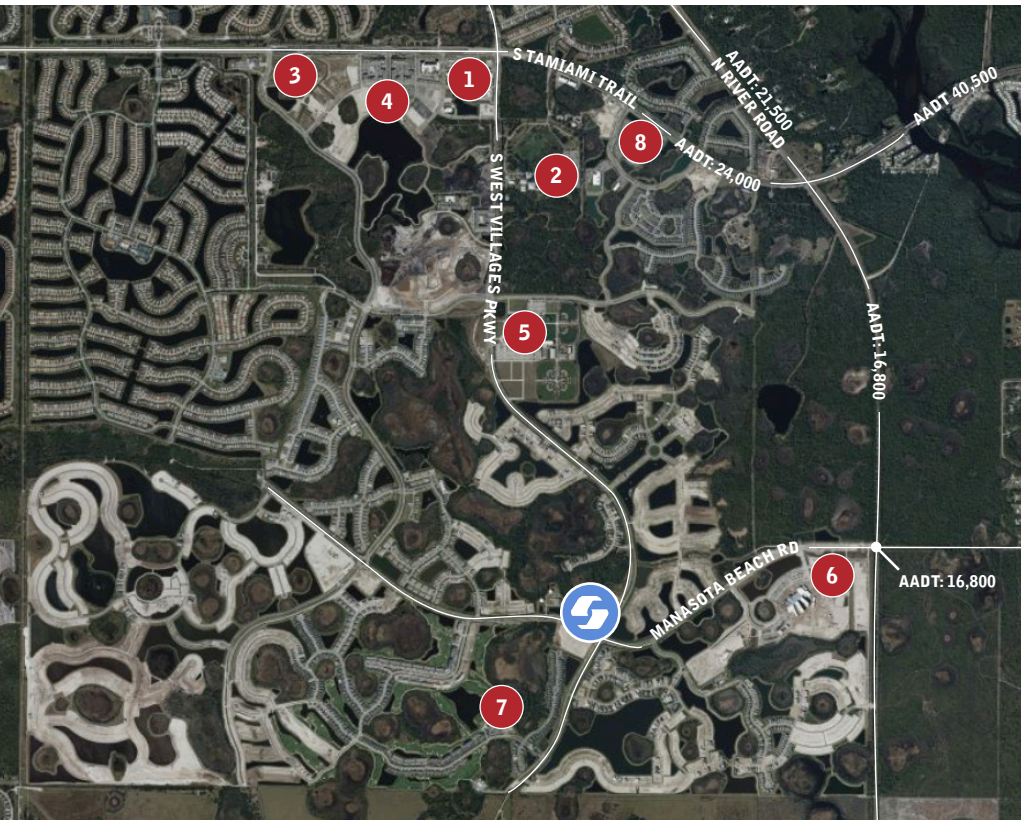



**WILLOWBROOK CENTER**

JESSICA MORENO  
DIRECTOR OF LEASING

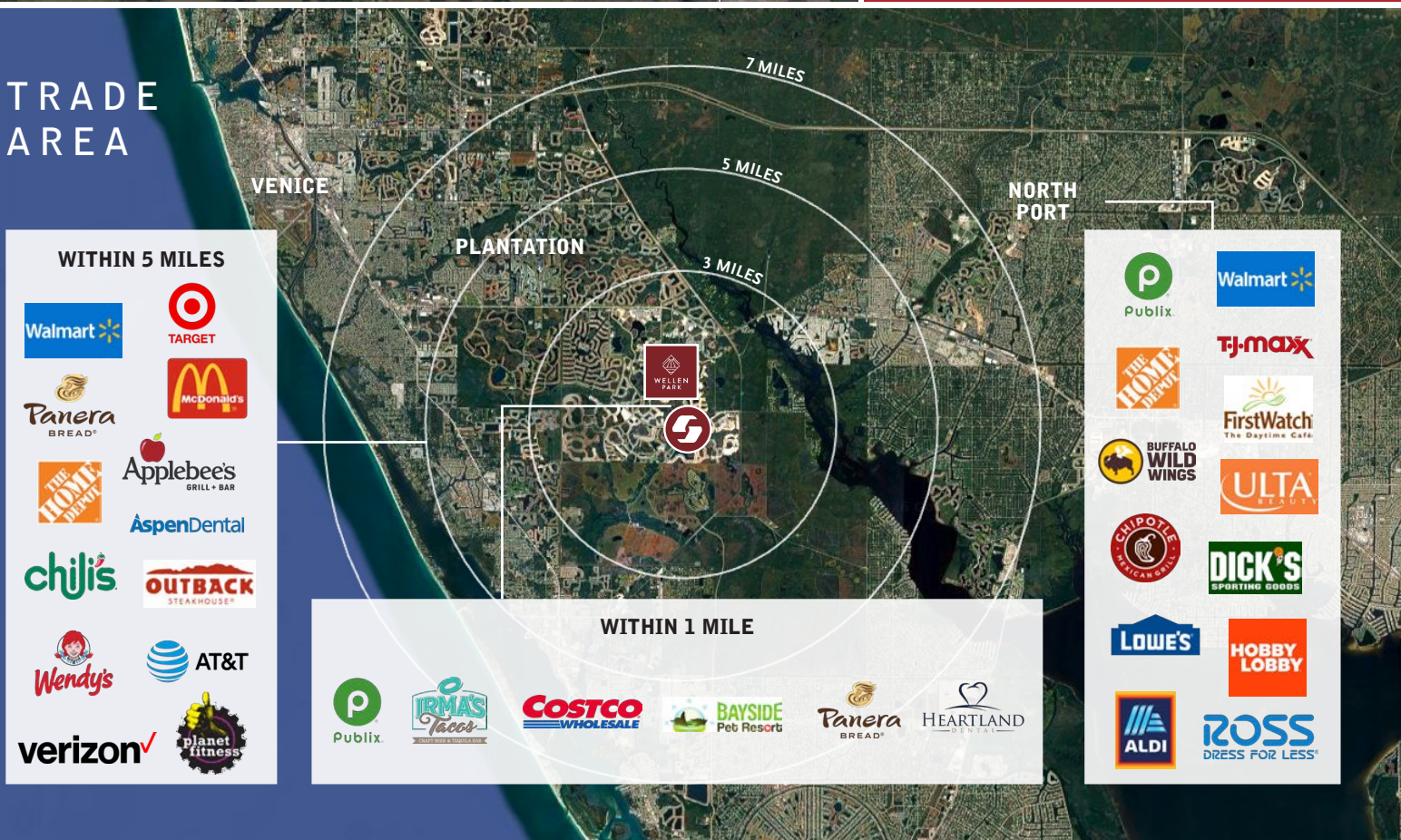
800-940-6000  
JESSICA.MORENO@SEMBLER.COM

# AERIALS



-  **WILLOWBROOK CENTER**
- 1** **PUBLIX AT WEST VILLAGES MARKETPLACE**
- 2** **STATE COLLEGE OF FLORIDA**
- 3** **HCA FLORIDA ER**
- 4** **DOWNTOWN WELLEN PARK**
- 5** **COOLTODAY PARK**
- 6** **WELLEN PARK HIGH SCHOOL**
- 7** **WELLEN PARK GOLF AND COUNTRY CLUB**
- 8** **COSTCO**

# TRADE AREA



## WITHIN 5 MILES

- 
- 
- 
- 
- 
- 
- 
- 
- 
- 
- 
- 
- 

## PLANTATION

## WITHIN 1 MILE

- 
- 
- 
- 
- 
- 

## NORTH PORT

- 
- 
- 
- 
- 
- 
- 
- 
- 
- 
- 
- 
- 



**WILLOWBROOK CENTER**

JESSICA MORENO  
DIRECTOR OF LEASING

800-940-6000  
JESSICA.MORENO@SEMBLER.COM

# SITE PLAN + AVAILABILITY



101	PUBLIX	55,701 SF	205	AVAILABLE	1,400 SF	OP 1	AVAILABLE	1.66 ACRES
102	PUBLIX LIQUOR	2,100 SF	206	AVAILABLE	1,400 SF	OP 2	AVAILABLE	1.54 ACRES
201	AVAILABLE	1,400 SF	207	AVAILABLE	1,400 SF	OP 3	AVAILABLE	1.67 ACRES
202	AVAILABLE	1,400 SF	208	AVAILABLE	1,400 SF	OP 4	AVAILABLE	1.31 ACRES
203	AVAILABLE	1,400 SF	209	AVAILABLE	1,400 SF	OP 5	AVAILABLE	1.64 ACRES
204	AVAILABLE	1,400 SF	210	AVAILABLE	1,400 SF			



**WILLOWBROOK CENTER**

JESSICA MORENO  
DIRECTOR OF LEASING

800-940-6000  
JESSICA.MORENO@SEMBLER.COM



- With a focus on wellness, community connections, and a vibrant lifestyle, Wellen Park offers an array of homes and neighborhoods built by leading national and regional builders.
- Ranked the No. 8 best-selling community in the nation for 2025 by prominent national real estate consultants RCLCO and John Burns, Wellen Park is planned for more than 50,000 residents and 22,500 homes at full buildout.
- The community is currently home to over 10,000 residents who enjoy on-site recreational and fitness opportunities, amenities, events, Downtown Wellen and proximity to the area's top-rated Gulf of Mexico beaches.
- Wellen Park continues to expand residential and lifestyle choices with new gated neighborhoods featuring a mix of multifamily and single-family homes for sale, as well as apartment rentals.



**WILLOWBROOK CENTER**

**JESSICA MORENO**  
DIRECTOR OF LEASING

800-940-6000  
JESSICA.MORENO@SEMBLER.COM



# WELLEN PARK

## LEGEND

- RESIDENTIAL NEIGHBORHOOD
- RENTAL NEIGHBORHOOD  
*Tropia, Grand Living, Solea 55+, Stillwell & BB Living*
- COMMERCIAL
- HEALTHCARE & EMERGENCY
- EDUCATION
- FUTURE DEVELOPMENT
- - - NATURE TRAILS

## AMENITIES KEY

- WELCOME CENTER
- COMMUNITY GARDEN
- COOLTODAY PARK  
*Altanta Braves Spring Training Facility*
- FIRE STATIONS
- EMERGENCY CENTERS
- DOG PARKS
- GOLF COURSES
- KAYAK LAUNCHES
- PLAYGROUNDS
- BEACHES



Copyright © 2025 Wellen Park, LLLP. Maps are not to scale and are for relative location purposes only. This map is solely for illustrative purposes and should never be relied upon. The past, present, future of proposed roads, easements, land uses, conditions, plot maps, lot sizes, layouts, zoning, utilities, drainage, land conditions, or development of any type whatsoever, whether reflected on the site plan or map, or whether outside the boundaries of the site plan or map, may not be shown or may be incomplete or inaccurate or may not change in the future. It is not uncommon that any of the foregoing can change without notice to you. You should never rely on the accuracy of this map in making any decisions relative to purchasing any property. Wellen Park, LLLP reserves the right to make changes at any time without notice.



**WILLOWBROOK CENTER**

**JESSICA MORENO**  
DIRECTOR OF LEASING

800-940-6000  
JESSICA.MORENO@SEMBLER.COM

# WILLOWBROOK CENTER



CONTACT FOR MORE INFORMATION

JESSICA MORENO  
DIRECTOR OF LEASING  
800-940-6000  
JESSICA.MORENO@SEMBLER.COM



SEMBLER.COM

