



865

Merrick Avenue

WESTBURY, NEW YORK

**BUILT-TO-SUIT OFFICE &
MEDICAL SPACE AVAILABLE**

— Features —

Conveniently located on Merrick Avenue, minutes from the Meadowbrook Parkway

N35 NICE bus stops in front of the Property, ½ mile to LIRR Westbury Station

Professional on-site ownership & management

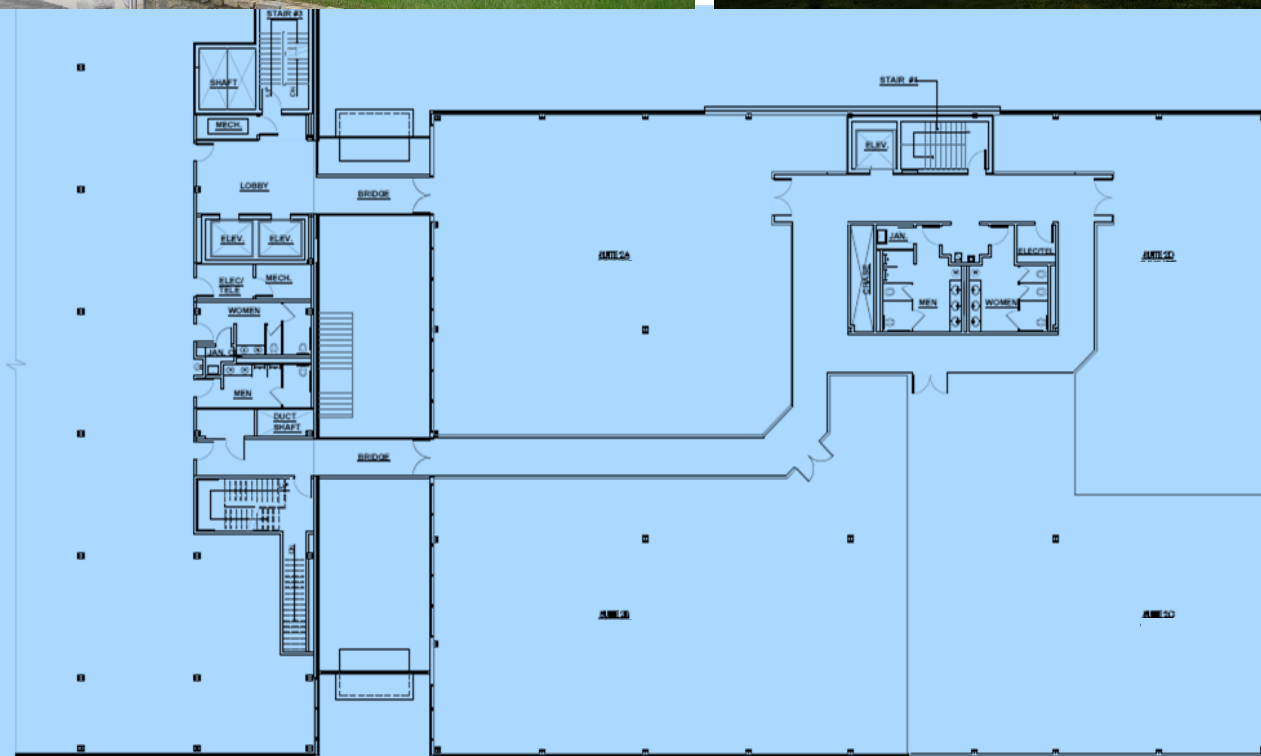
Multiple fiber optic high speed data carriers, full building emergency power generator

Proximity to restaurants and shopping, across from Eisenhower Park

Abundant Parking



The Rochlin Organization
401 Broadhollow Road
Melville, New York
Tel: 516.835.9300.



865
Merrick Avenue

WESTBURY, NEW YORK

FOR INFORMATION CONTACT EXCLUSIVE AGENT:

MICHAEL LEVENSTEIN

401 broad hollow road, suite L1

melville, new york, 11747

main - 516.935.8300 x15

direct - 516.441.7330

www.therochlinorganization.com

THE ROCHLIN ORGANIZATION