

Cascade | Sotheby's
Hasson | INTERNATIONAL REALTY

16370 BELL ST SANDY, OR 97055

PRESENTED BY

THOMAS CALE
Real Estate Broker

971.645.3035
thomas@pdxinternational.com

JUSTIN KRUG
Real Estate Broker

503.754.0793
justin@justinkrug.com

310 N State St Ste 102
Lake Oswego, OR 97034



Property Summary

16370 BELL ST SANDY, OR 97055

Once in a generation opportunity to own prime 14 acres zoned commercial in the heart of Sandy, OR! This special parcel offers the serenity of rural living close to Highway-26 and is situated along the Sandy business corridor. Stretch out on your own slice of heaven with convenient access to shops, restaurants, and commerce. Take advantage of the proximity to Mt. Hood for skiing, hiking, recreation and year-round angling in the renowned Sandy River, prized for its salmon and steelheads runs. Includes 30'x60' barn/workshop. 45 min to downtown Portland and 40 min from PDX Intl airport.

Sale Price: \$2,995,000

Lot Size: 14.18 Acres

Home Size: 2,429 Sq Ft

Year Built: 1977 Approx.

Zoning: C2



Additional Photos

16370 BELL ST SANDY, OR 97055



Additional Photos

16370 BELL ST SANDY, OR 97055



Additional Photos

16370 BELL ST SANDY, OR 97055



Aerial Map

16370 BELL ST SANDY, OR 97055



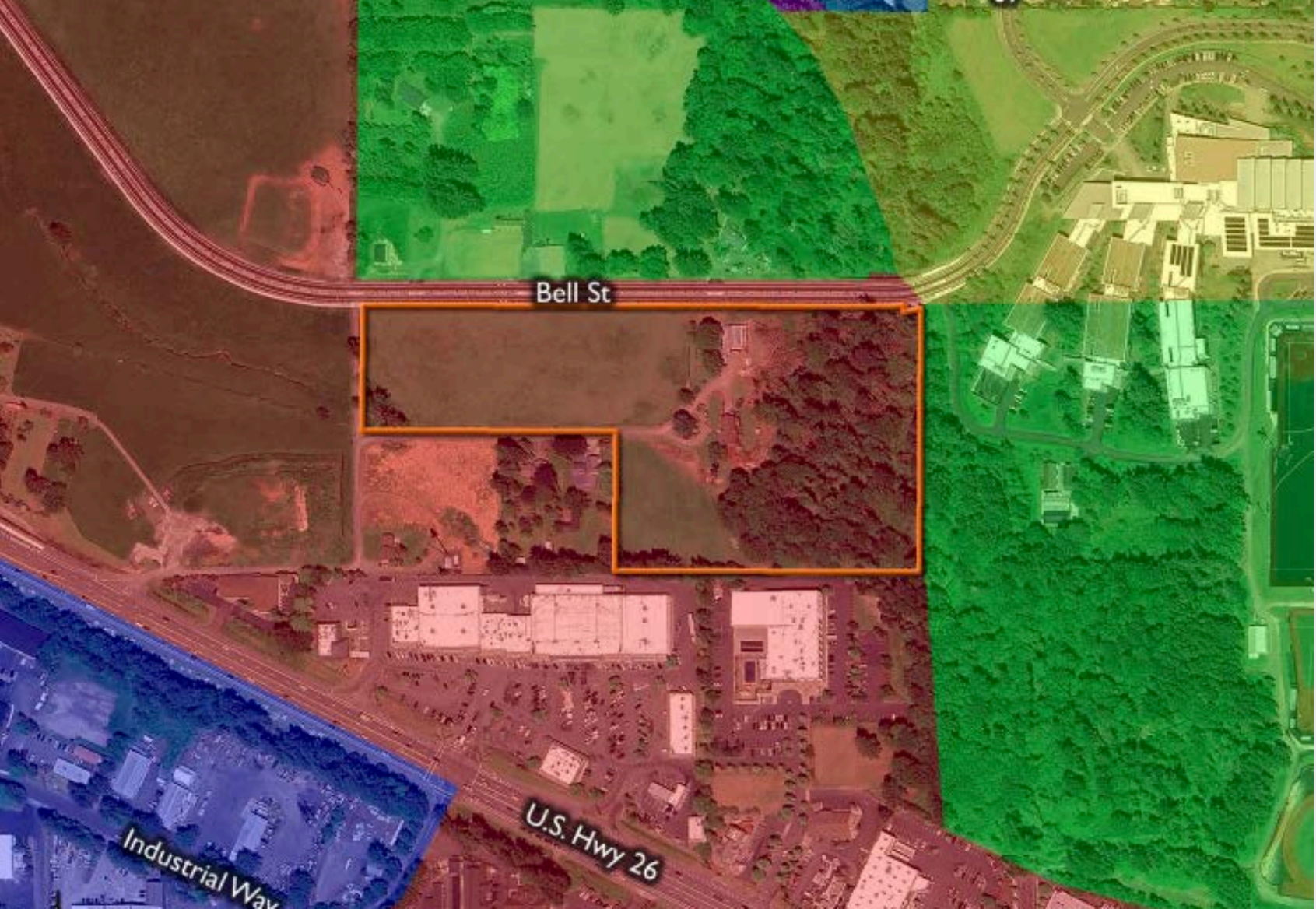
Traffic Map

16370 BELL ST SANDY, OR 97055



Zoning Aerial Map

16370 BELL ST SANDY, OR 97055



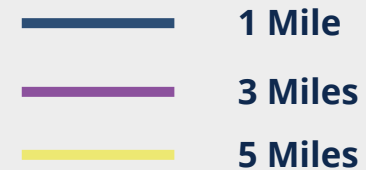
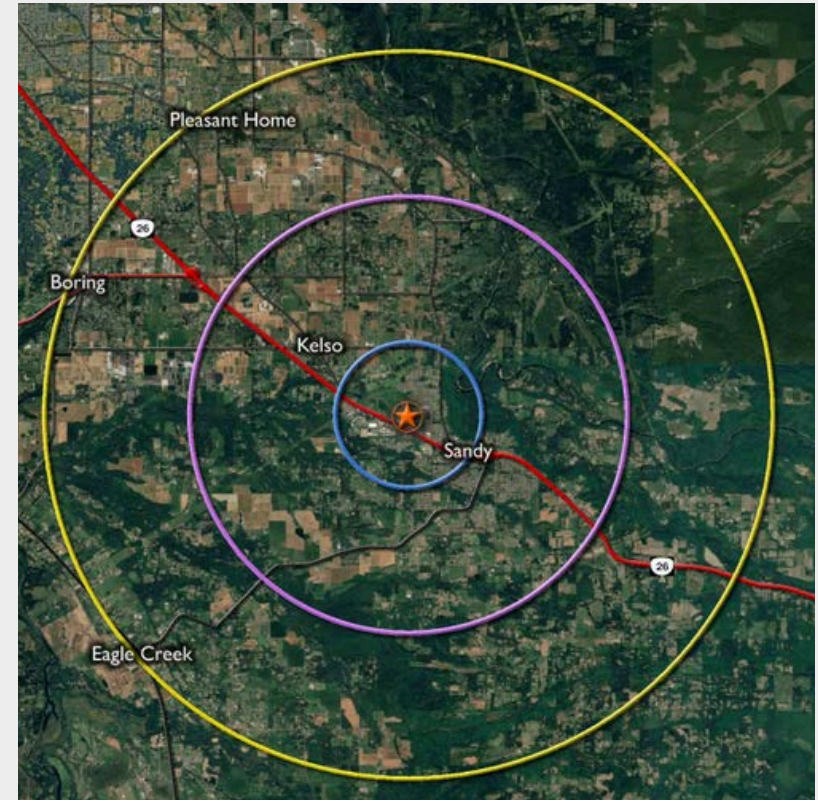
	Property
	C2
	R2
	SFR
	R1
	I2
	POS

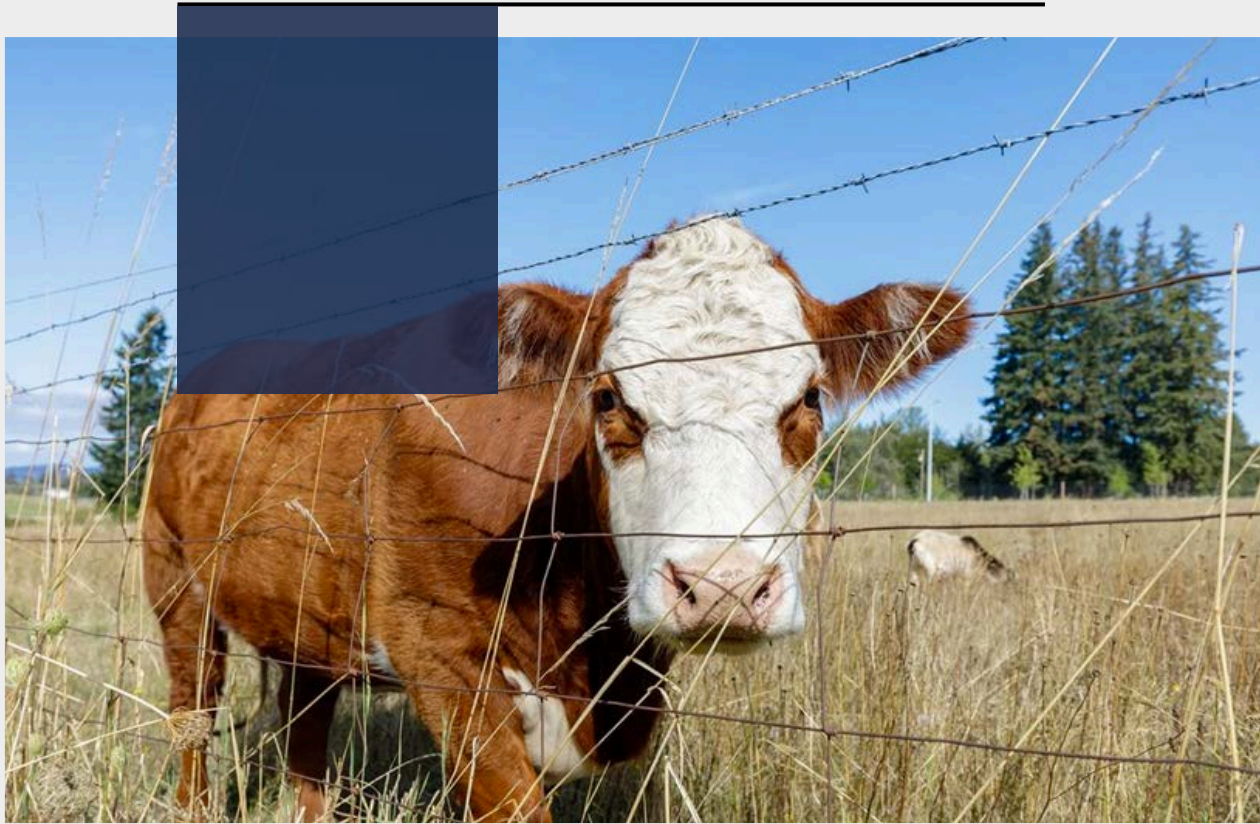
Demographics Report

16370 BELL ST SANDY, OR 97055



POPULATION	1 MI.	3 MI.	5 MI.
Total Population	4,766	19,161	27,649
Median Age	37.8	38.9	41.1
Est. Male Population	49.1%	49.7%	50.2%
Est. Female Population	50.9%	50.3%	49.8%
Households & Income	1 MI.	3 MI.	5 MI.
Total Households	1,749	7,070	10,185
2029 Projected Households	1,803	7,210	10,323
Average HH Income	\$120,631	\$130,165	\$130,847
Median Home Value	\$538,314	\$558,265	\$589,648





Contact Information

📞 971.645.3035

✉️ thomas@pdxinternational.com

🏠 310 N State St Ste 102 Lake Oswego, OR 97034

🌐 www.pdxinternational.com