



For Lease

Marty Justus

Four Star Real Estate
541 709 7744
Martyj@4starre.com

Jim Shipman

Colliers
208 472 2862
jim.shipman@colliers.com

241 SW 3rd Ave.,
Ontario, OR 97914
4starre.com

Former Carpet One Retail Location

680 SE 13th Street
Ontario, OR 97914

Highlights:

- Over 7,800 SF
- Showroom/ Warehouse
- Rapidly expanding retail hub
- No sales tax in Oregon

This document has been prepared by Colliers for advertising and general information only. Colliers makes no guarantees, representations or warranties of any kind, expressed or implied, regarding the information including, but not limited to, warranties of content, accuracy and reliability. Any interested party should undertake their own inquiries as to the accuracy of the information. Colliers excludes unequivocally all inferred or implied terms, conditions and warranties arising out of this document and excludes all liability for loss and damages arising there from. This publication is the copyrighted property of Colliers and/or its licensor(s). © 2025. All rights reserved. This communication is not intended to cause or induce breach of an existing listing agreement. Colliers Paragon, LLC.

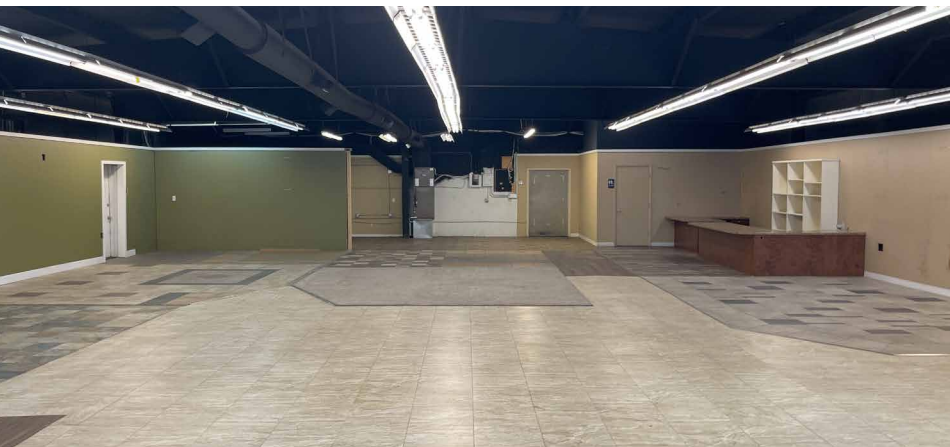
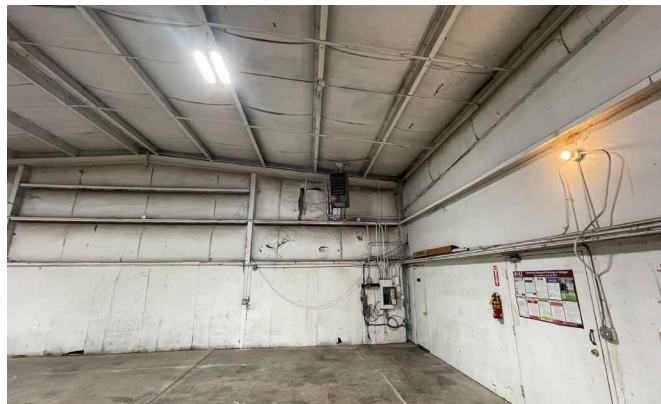
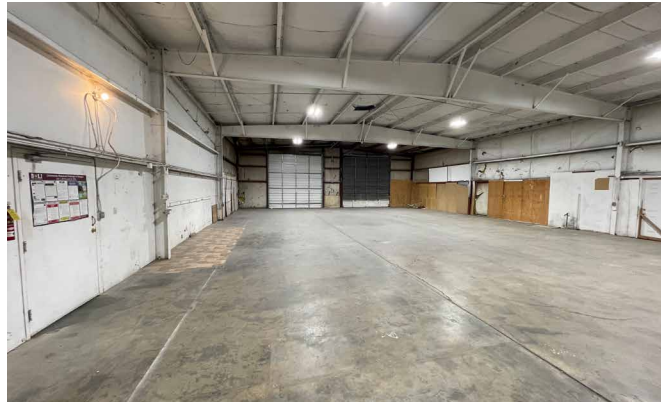
For Lease

Property Information

Property Type	Industrial, Retail, Warehouse
Available SF	7,850 SF
Land Size	0.53 Acres
Lease Type	NNN
Lease Rate	\$4000/month or \$6.11 SF/year
Parking	10+
Access	SE 13th Street Frontage

Space Available

Suite	Size
Showroom	2,500 SF
Warehouse	5,000 SF



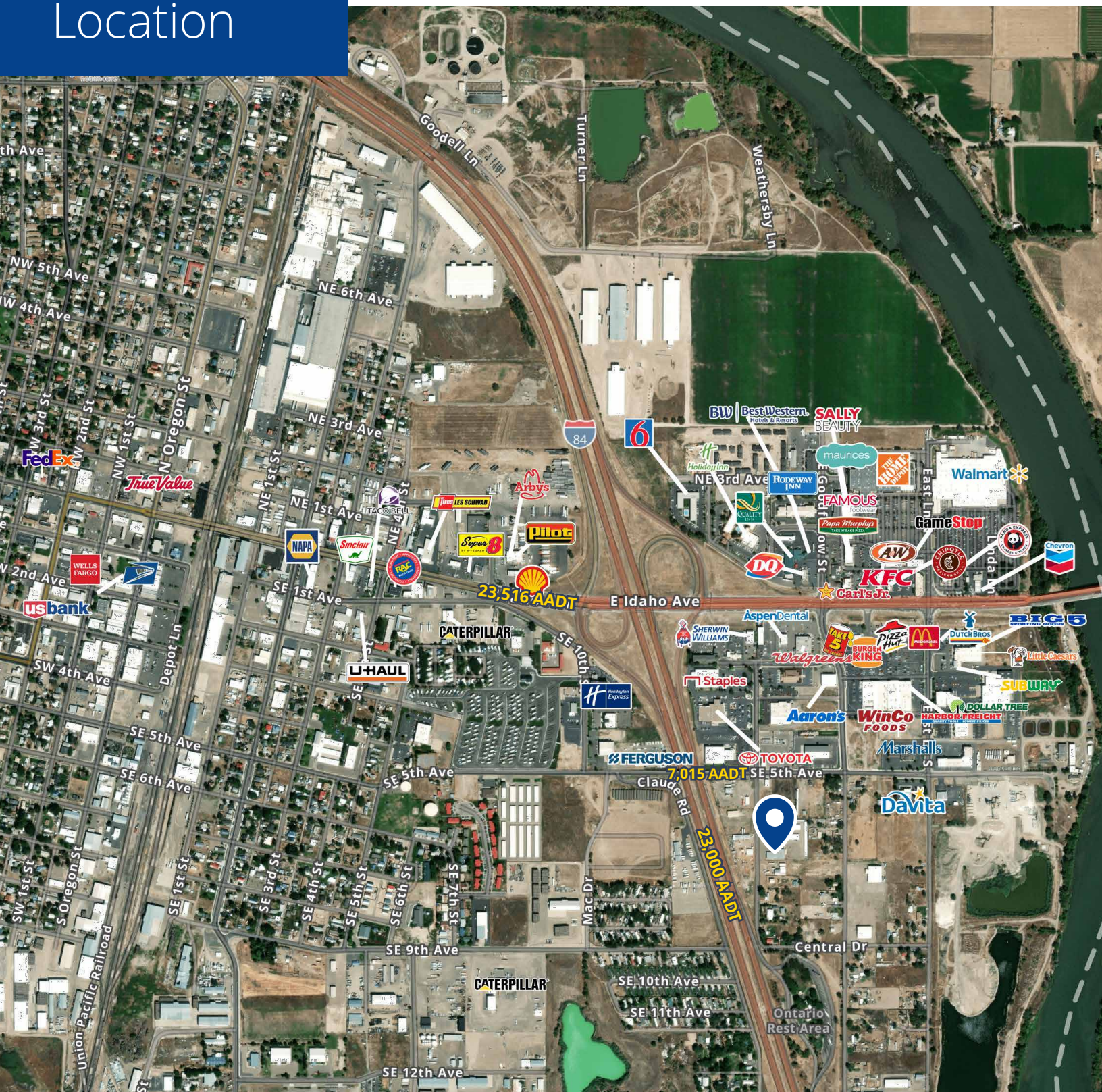
Location



Google Map



Street View



Demographics



	1 Miles	3 Miles	5 Miles
Population	3,010	21,769	33,282
Households	1,025	8,031	12,362
Avg. HH Income	\$68,418	\$76,544	\$77,306