



Colliers

INTERSTATE
64

Post Rd

Technology Dr

Winghaven Blvd

For sale

Sale Price:

\$1,900,000
(\$4.32 PSF)

Contact us:

Chad Burkemper, SIOR

Executive Vice President
+1 314 584 6279
chad.burkemper@colliers.com

Dennis DeSantis, SIOR, CRE

Executive Vice President
+1 314 584 6253
dennis.desantis@colliers.com

Colliers

101 South Hanley Road
Suite 1400
St. Louis, MO 63105
+1 314 863 4447
colliers.com/stlouis

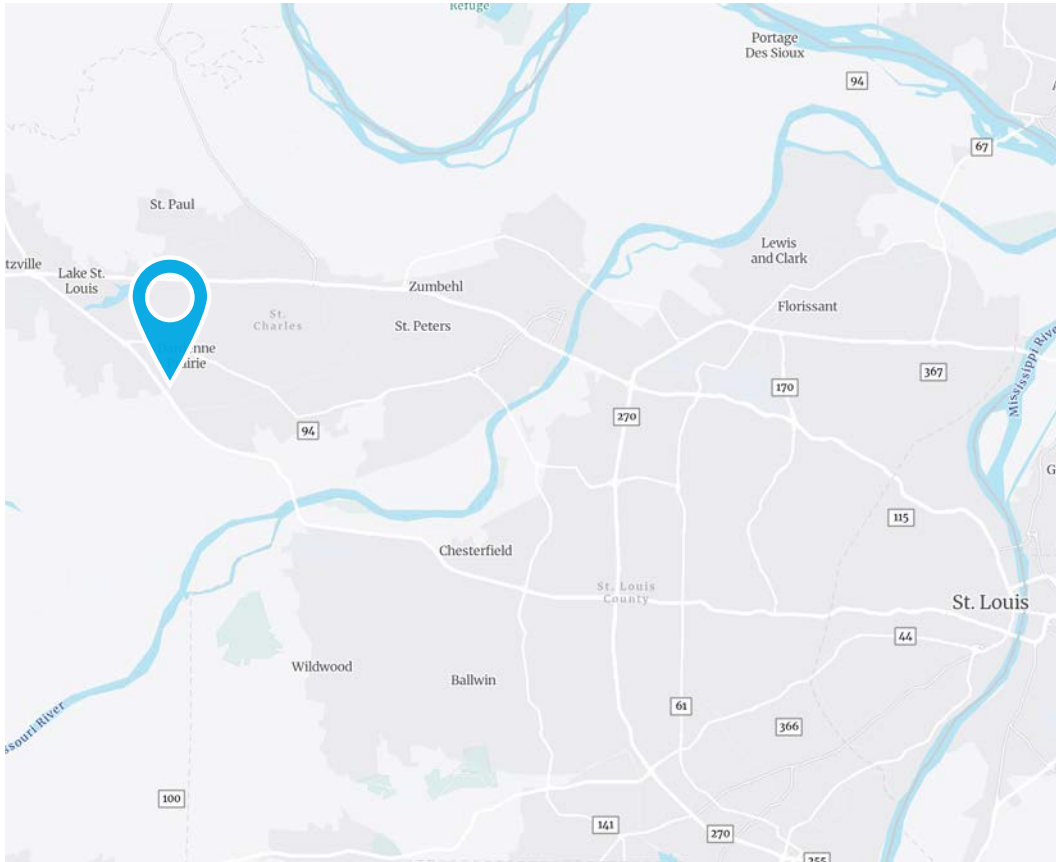
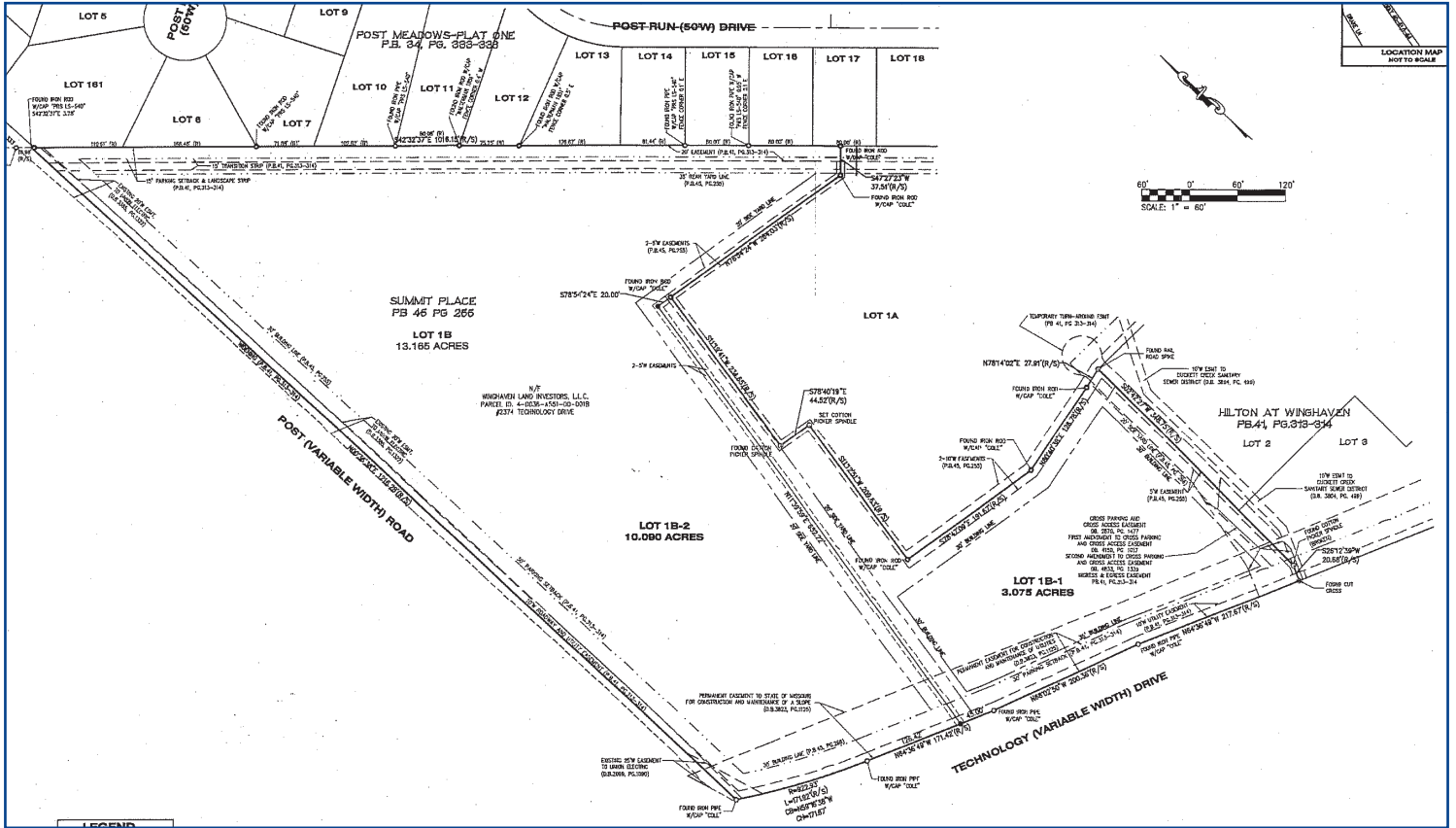
Technology Drive & Post Road O'Fallon, MO 63368

10.09 Acres Available at a High Traffic Intersection

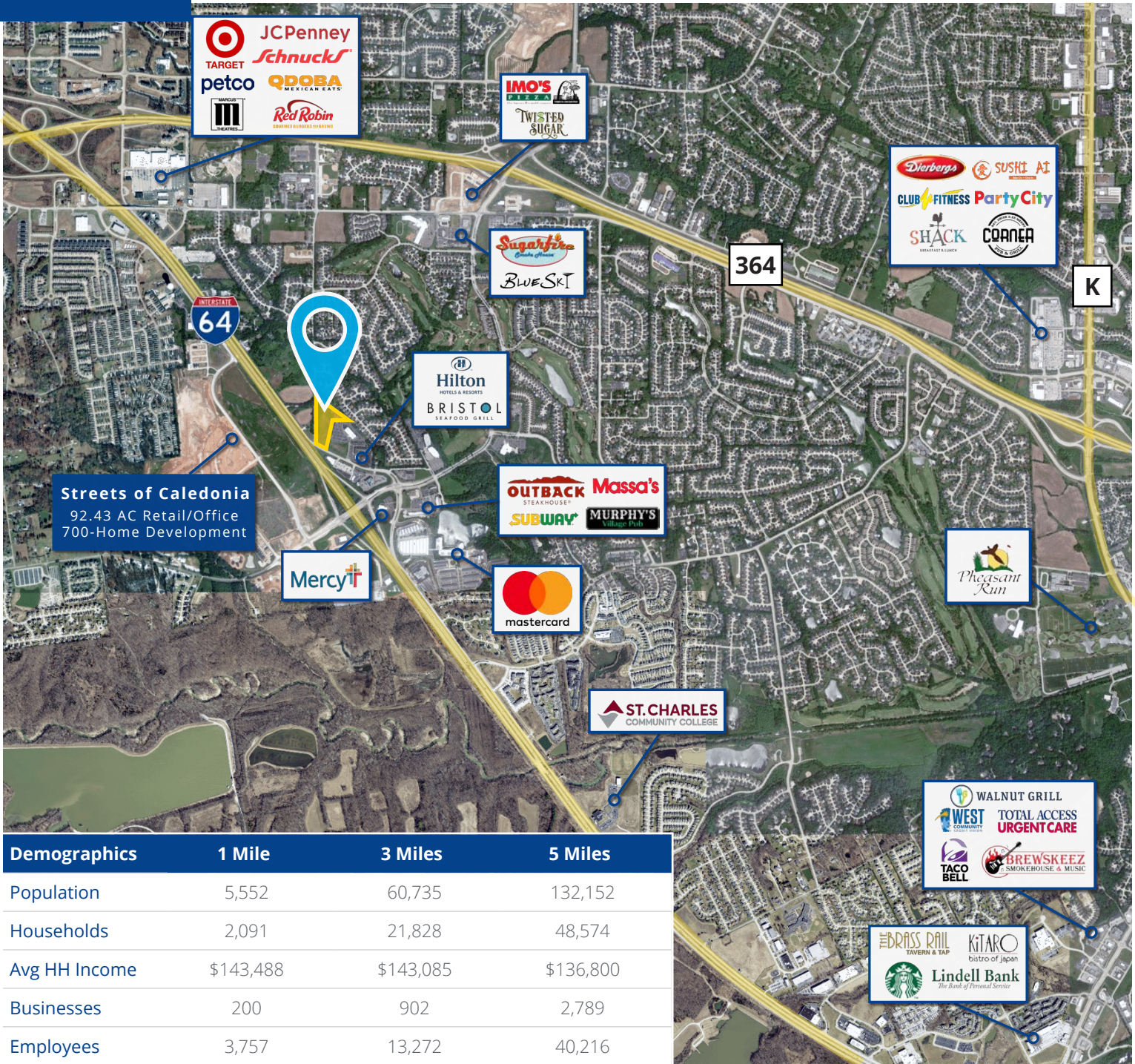
Highlights

- Easy access to Interstate 64 at Winghaven Boulevard
- Excellent visibility with approximately 52,000 vehicles per day on Interstate 64
- Located near dining, hospitality & retail services
- Approximately 10.09 acres known as Lot 1B-2 of Summit Place Plat 2
- Located at the corner NE corner of Post Rd and Technology Dr in O'Fallon, MO

LOT 1B-2



LOCATION



Contact us:

Chad Burkemper, SIOR
Executive Vice President
+1 314 584 6279
chad.burkemper@colliers.com

Dennis DeSantis, SIOR, CRE
Executive Vice President
+1 314 584 6253
dennis.desantis@colliers.com

Colliers
101 South Hanley Road
Suite 1400
St. Louis, MO 63105
+1 314 863 4447
colliers.com/stlouis

This document/email has been prepared by Colliers for advertising and general information only. Colliers makes no guarantees, representations or warranties of any kind, expressed or implied, regarding the information including, but not limited to, warranties of content, accuracy and reliability. Any interested party should undertake their own inquiries as to the accuracy of the information. Colliers excludes unequivocally all inferred or implied terms, conditions and warranties arising out of this document and excludes all liability for loss and damages arising there from. This publication is the copyrighted property of Colliers and /or its licensor(s). © 2024. All rights reserved. This communication is not intended to cause or induce breach of an existing listing agreement.