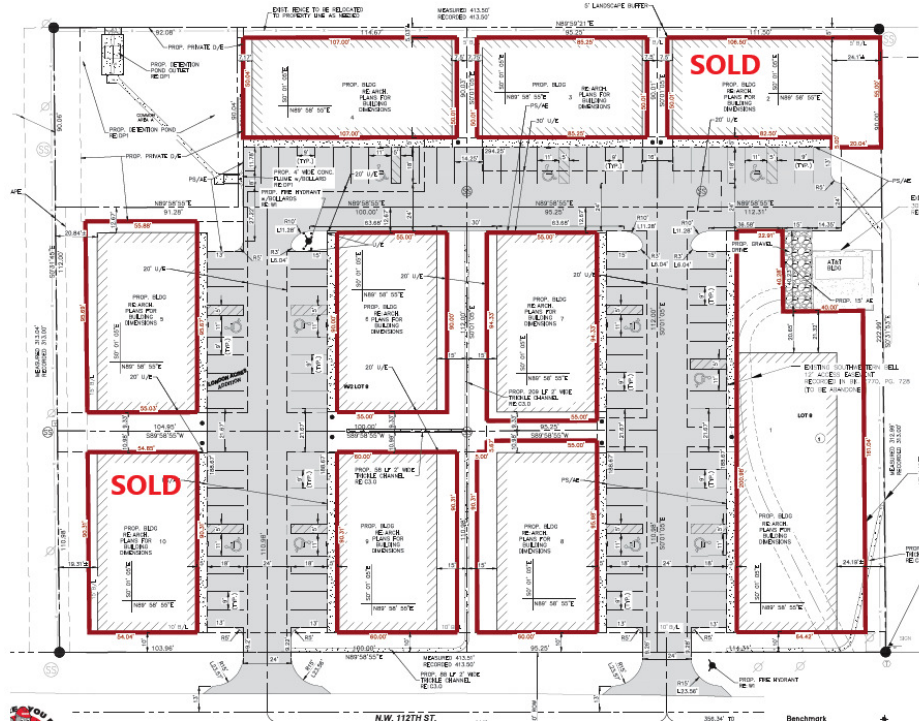


INDUSTRIAL FLEX - LOTS FOR SALE OR BUILD TO SUIT



OFFERING SUMMARY

Land Price / SF:	\$22.00
Lot Sizes (SF):	8,573 - 11,200
Lot Size:	2.97 Acres
Available Lots:	7
Zoning:	SPUD-1400
Available BTS Options:	7
BTS Bldg. Sizes (SF):	4,000 - 7,000

PROPERTY OVERVIEW

This property is conveniently situated near the intersection of 12th and Western, just south of Chisholm Creek and north of Nichols Hills. Its location and proposed building plans make it an ideal choice for various businesses looking to expand or establish a presence in the metro area. Each site features a unique industrial flex building plan that includes ample parking, overhead doors, clear span warehouse, and a host of additional amenities.

PROPERTY HIGHLIGHTS

- Excellent location with great highway access and close proximity to Nichols Hills and Chisholm Creek.
- Ideal for storage, distribution, contractors, garage, etc.
- Ownership is open to Build to suit options on any of the lots. This allows tenants to avoid high upfront capital expenditures associated with purchasing or renovating existing buildings.

TYLER HUXLEY
405.973.8435
tyler@creekcre.com

JOHNNY STRADAL
405.990.0569
johnny@creekcre.com

ETHAN SLAVIN
405.830.0252
ethan@creekcre.com

1035 NORTHWEST 112TH STREET
1035 NORTHWEST 112TH STREET | OKLAHOMA CITY, OK 73114



LOTS (SPEC BUILDING PICTURE)



OF LOTS 7 | TOTAL LOT SIZE 8,573 - 11,200 SF | TOTAL LOT PRICE \$22.0 - \$22.0 / SF | BEST USE -

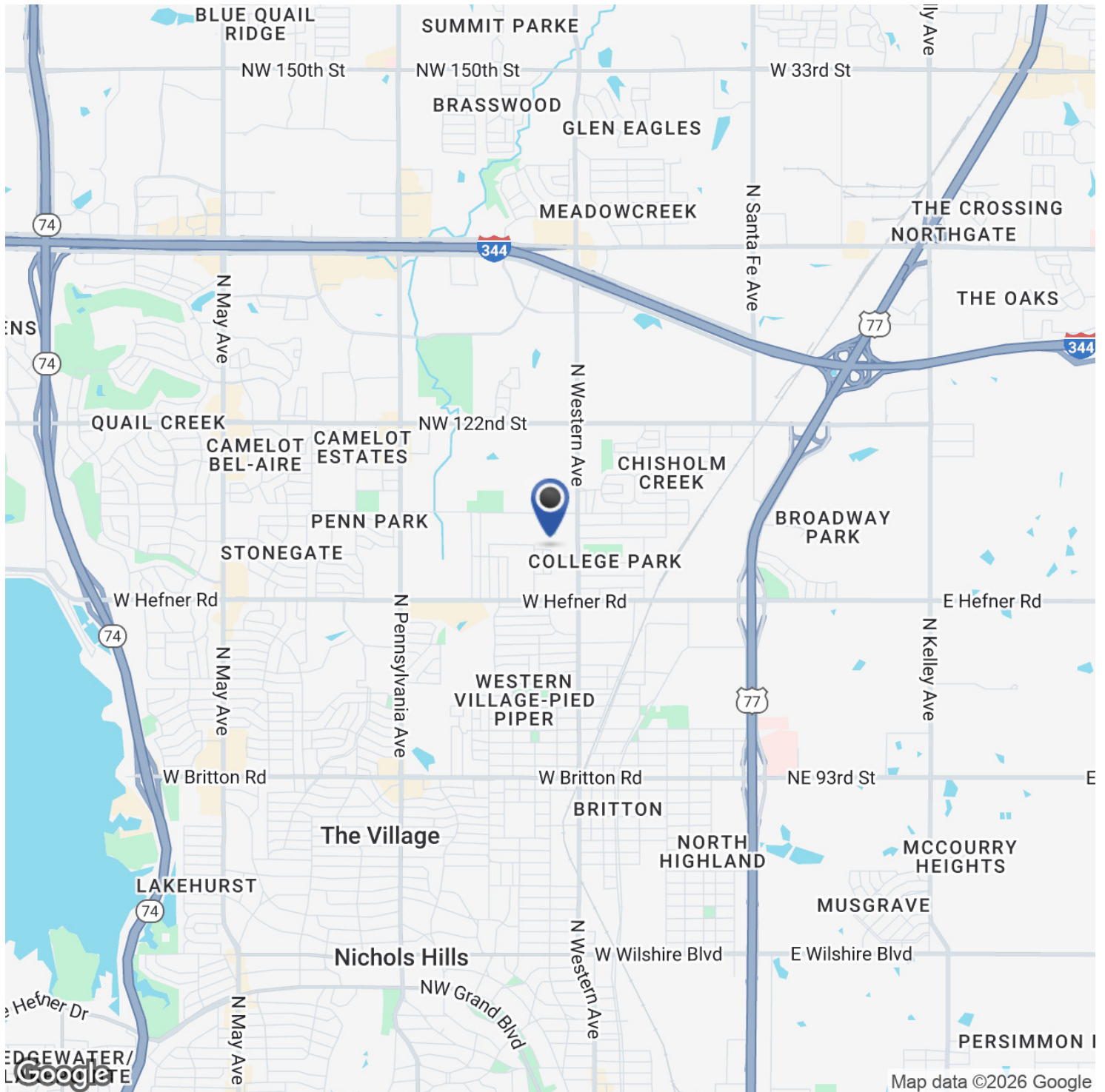
STATUS	LOT #	ADDRESS	APN	SUB-TYPE	SIZE	PRICE	ZONING
Available	3	1035 NW 112, Bldg. 3		Industrial	8,573 SF	\$22.00 / SF	SPUD-1400
Available	4	1035 NW 112, Bldg. 4		Industrial	10,325 SF	\$22.00 / SF	SPUD-1400
Available	5	1035 NW 112, Bldg. 5		Industrial	10,223 SF	\$22.00 / SF	SPUD-1400
Available	6	1035 NW 112, Bldg. 6		Industrial	11,200 SF	\$22.00 / SF	SPUD-1400
Available	7	1035 NW 112, Bldg. 7		Industrial	10,668 SF	\$22.00 / SF	SPUD-1400
Available	8	1035 NW 112, Bldg. 8		Industrial	10,571 SF	\$22.00 / SF	SPUD-1400
Available	9	1035 NW 112, Bldg. 9		Industrial	11,098 SF	\$22.00 / SF	SPUD-1400

TYLER HUXLEY
405.973.8435
tyler@creekcre.com

JOHNNY STRADAL
405.990.0569
johnny@creekcre.com

ETHAN SLAVIN
405.830.0252
ethan@creekcre.com

LOCATION MAP

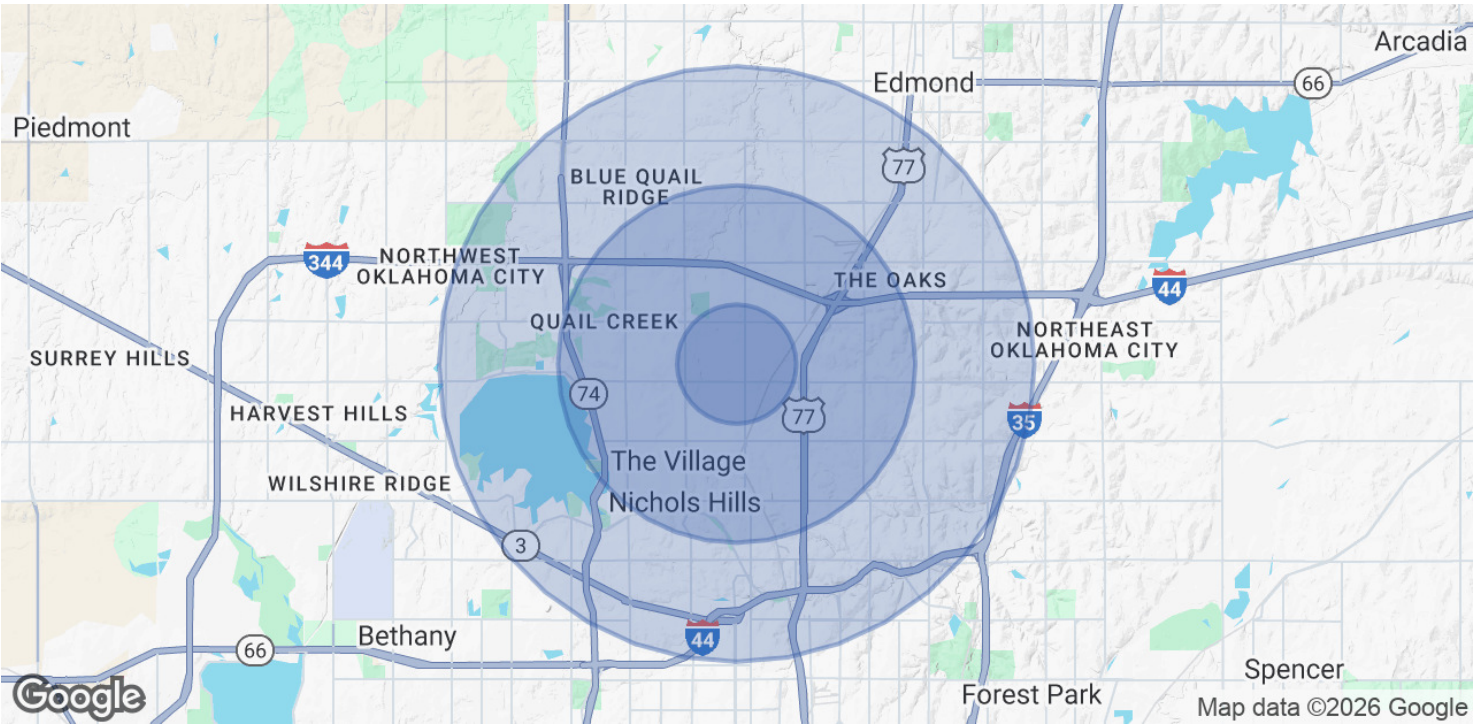


TYLER HUXLEY
405.973.8435
tyler@creekcre.com

JOHNNY STRADAL
405.990.0569
johnny@creekcre.com

ETHAN SLAVIN
405.830.0252
ethan@creekcre.com

DEMOGRAPHICS MAP & REPORT



POPULATION	1 MILE	3 MILES	5 MILES
Total Population	10,247	65,989	174,736
Average Age	36	39	40
Average Age (Male)	34	37	38
Average Age (Female)	38	40	41

HOUSEHOLDS & INCOME	1 MILE	3 MILES	5 MILES
Total Households	4,460	30,370	77,036
# of Persons per HH	2.3	2.2	2.3
Average HH Income	\$56,155	\$92,307	\$103,136
Average House Value	\$176,385	\$320,716	\$327,593

Demographics data derived from AlphaMap