



Land Available for Sale

**173RD STREET AND MULLEN ROAD
BELTON, MISSOURI**

Property Highlights

- 5 (±) acre site
- Zoned I-1 light industry, office use permitted
- Utilities available
- Minutes from major retail along 58 Hwy
- Easy access to I-49 and 58 Hwy
- Located near CenterPoint KCS Intermodal Center, Richards Gebaur Commerce Park and NNSA facility
- Incentives available
- For sale at \$871,000 / \$4.00/sf

For information, please contact:

Mark C. Long, SIOR, CCIM, CRE, LEED AP
President and Chief Executive Officer
t 816-512-1011
mlong@nzimmer.com

Chris S. Robertson, CCIM
Executive Managing Director, Principal
t 816-512-1014
crobertson@nzimmer.com

1220 Washington Street, Suite 300
Kansas City, MO 64105

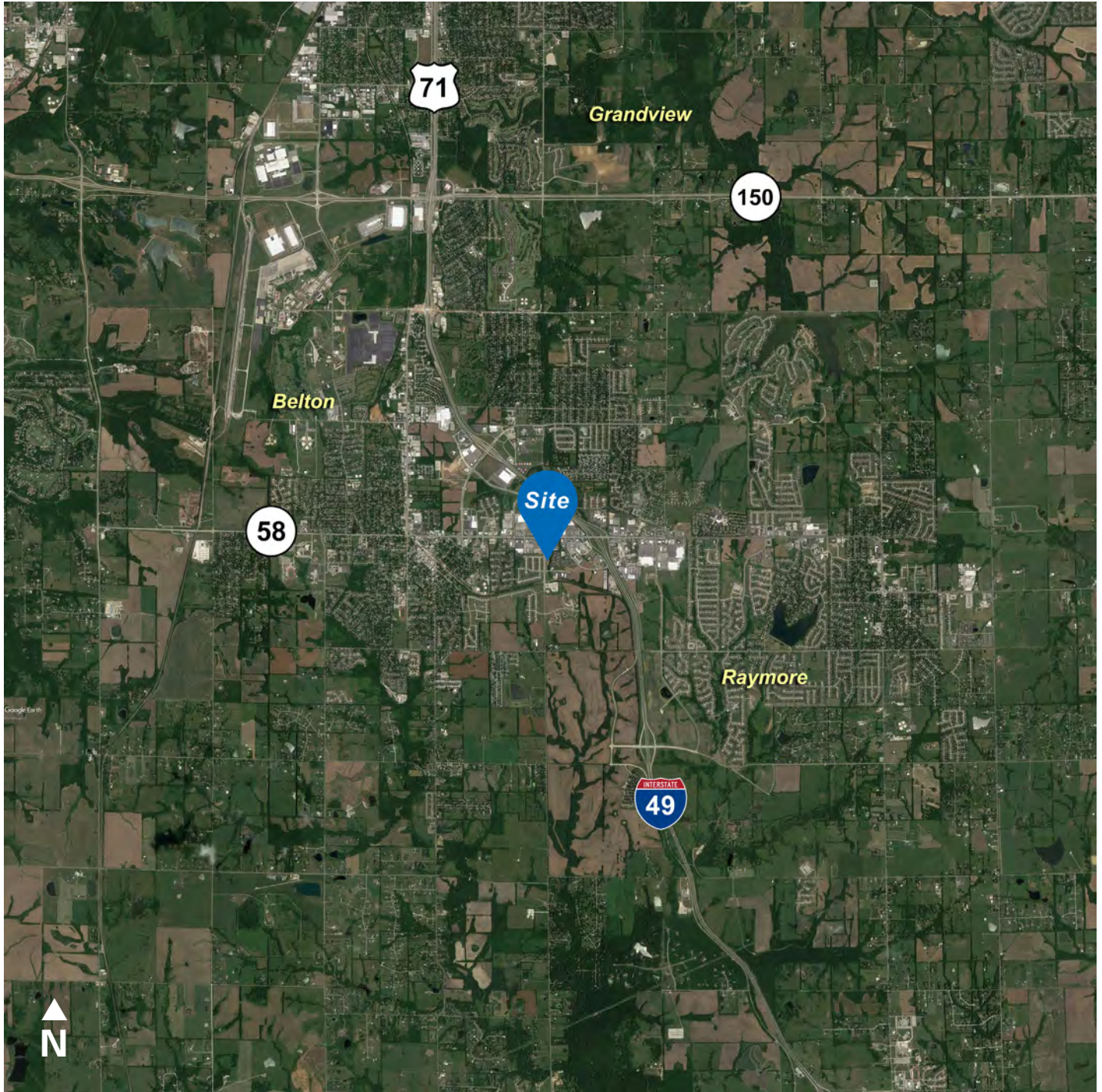
nmrkzimmer.com



NEWMARK
ZIMMER

The information contained herein has been obtained from sources deemed reliable but has not been verified and no guarantee, warranty or representation, either express or implied, is made with respect to such information. Terms of sale or lease and availability are subject to change or withdrawal without notice.

173RD STREET AND MULLEN ROAD, BELTON, MISSOURI



CONTACT

Mark C. Long, SIOR, CCIM, CRE, LEED AP

President and Chief Executive Officer

t 816-512-1011

mlong@nzimmer.com

nmrkzimmer.com

Chris S. Robertson, CCIM

Executive Managing Director, Principal

t 816-512-1014

crobertson@nzimmer.com

NEWMARK
ZIMMER

173RD STREET AND MULLEN ROAD, BELTON, MISSOURI

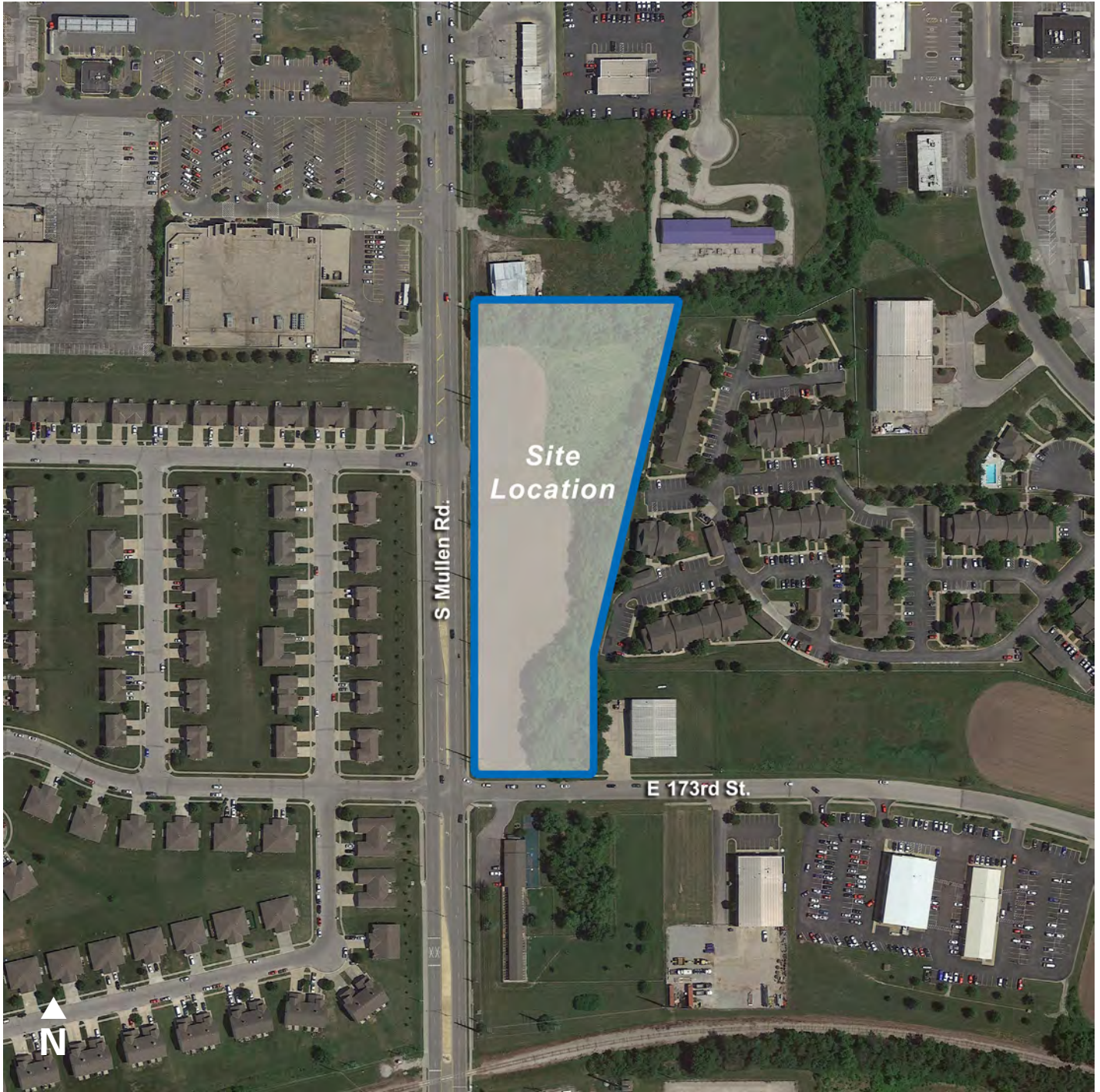


CONTACT

Mark C. Long, SIOR, CCIM, CRE, LEED AP
 President and Chief Executive Officer
 t 816-512-1011
 mlong@nzimmer.com
nmrkzimmer.com

Chris S. Robertson, CCIM
 Executive Managing Director, Principal
 t 816-512-1014
 crobertson@nzimmer.com

173RD STREET AND MULLEN ROAD, BELTON, MISSOURI



CONTACT

Mark C. Long, SIOR, CCIM, CRE, LEED AP

President and Chief Executive Officer

t 816-512-1011

mlong@nzimmer.com

nmrkzimmer.com

Chris S. Robertson, CCIM

Executive Managing Director, Principal

t 816-512-1014

croberson@nzimmer.com

NEWMARK
ZIMMER