



OFFICE SPACE FOR LEASE

600 W. ROOSEVELT ROAD, WHEATON, IL

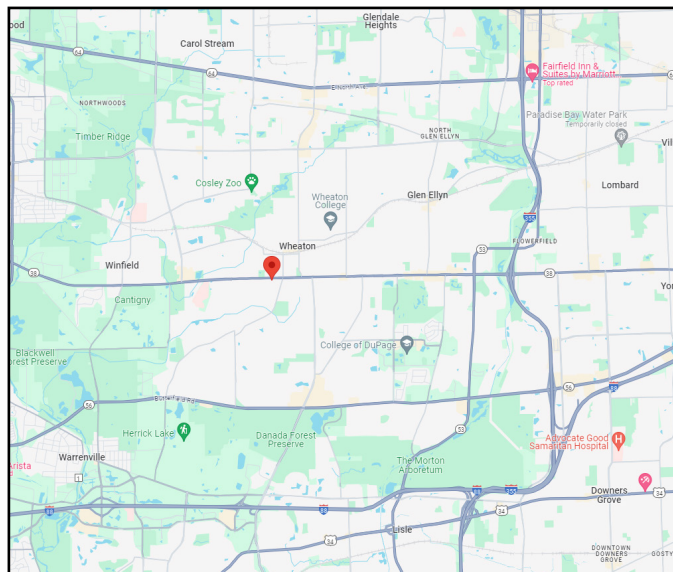


BUILDING FEATURES:

- 192 SF office space available immediately
- Prominent location on Roosevelt Rd just east of Mannheim Rd
- Easy Access to I-294, I-290 & I-88
- Abundant Parking: 40 + surface parking spaces
- Ideal for any Office Users
- Electric, Wi-Fi, Onnet Janitorial Service & HVAC included in rent!!!!
- Walking distance to restaurants and shopping
- Public Transportation on Roosevelt Rd (Pace Bus)
- 24 Hour Tenant Access & private suite entrances
- Move in ready office suites
- 5 night a week janitorial service included in all suites!!!!
- Shared Kitchen & Conference Room access

AVAILABLE SPACE:

SUITE	SIZE (SF)	Description	Monthly Rent
2	192 SF	Vacant	\$664 PerMonth



FOR MORE INFORMATION:

Randy Olczyk
 Direct: 847.246.9611
 randy@chicagolandcommercial.com

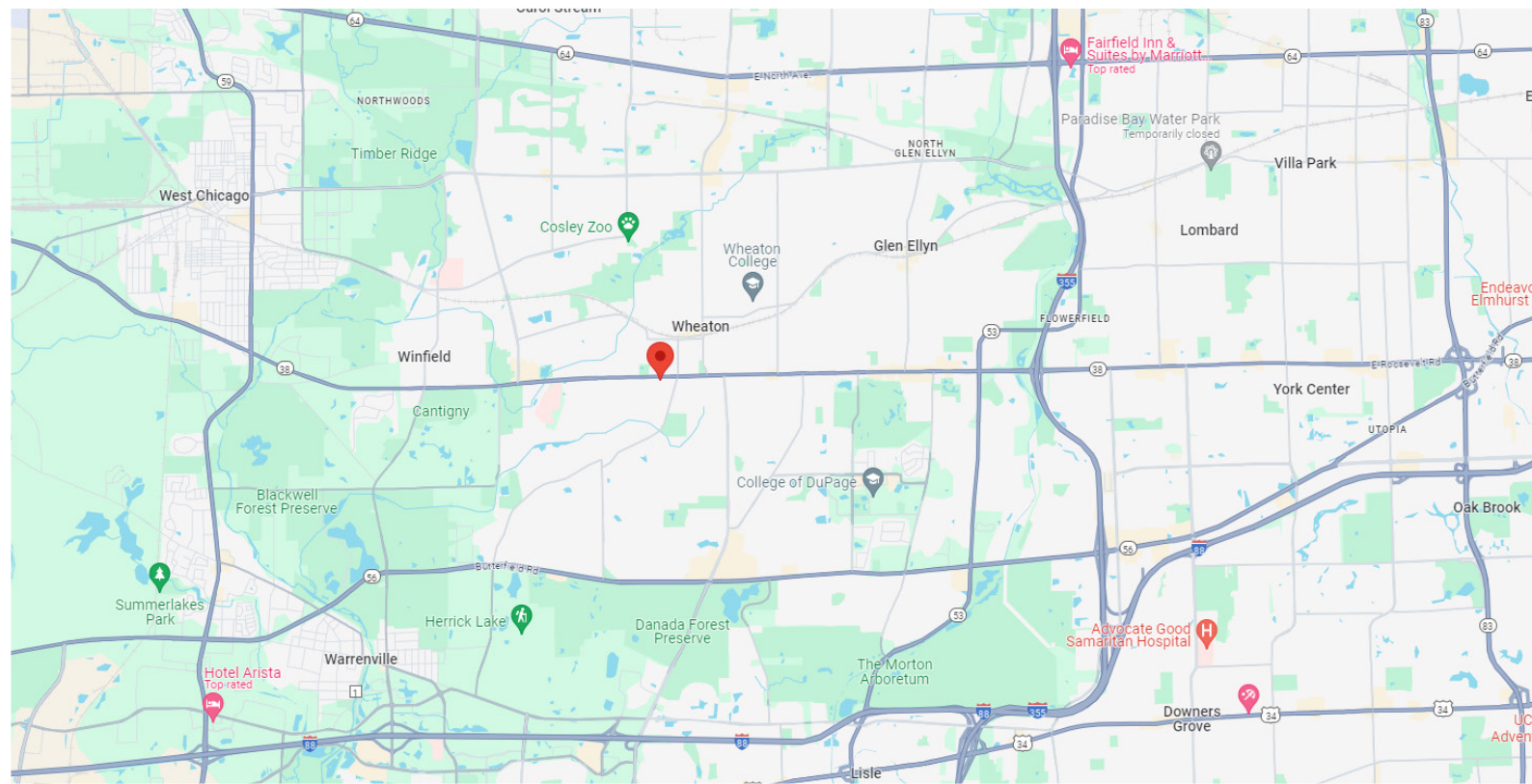
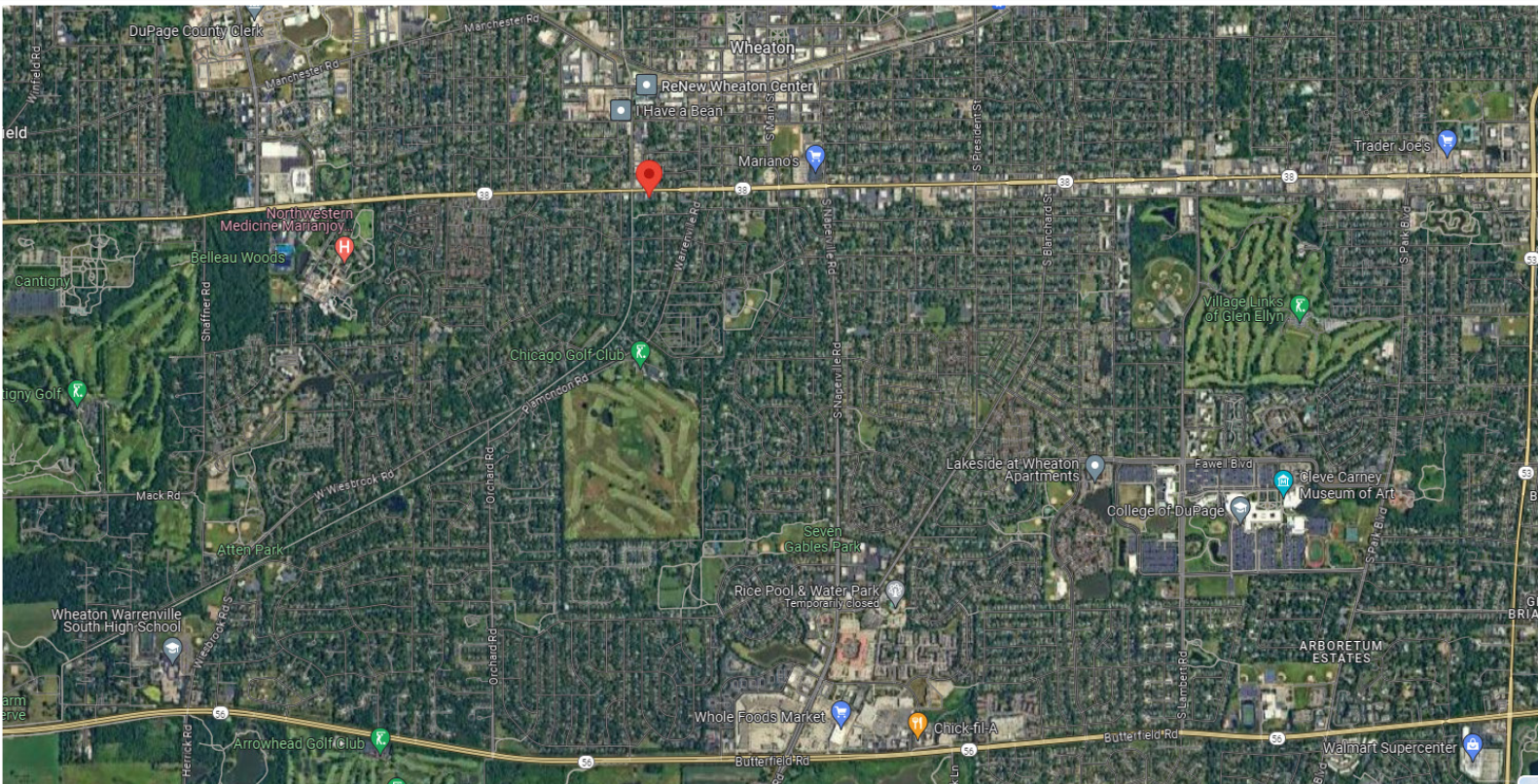
Tom Callahan
 Direct: 847.246.9636
 tom@chicagolandcommercial.com





OFFICE SPACE FOR LEASE

600 W. ROOSEVELT ROAD, WHEATON, IL



**Chicagoland
Commercial
REAL ESTATE**

4811 Emerson Ave-Suite 112., Palatine, IL