



# For Sale

309 Delaware Street  
Greenville, SC 29605

± 78,400 SF Available  
R&D / Manufacturing

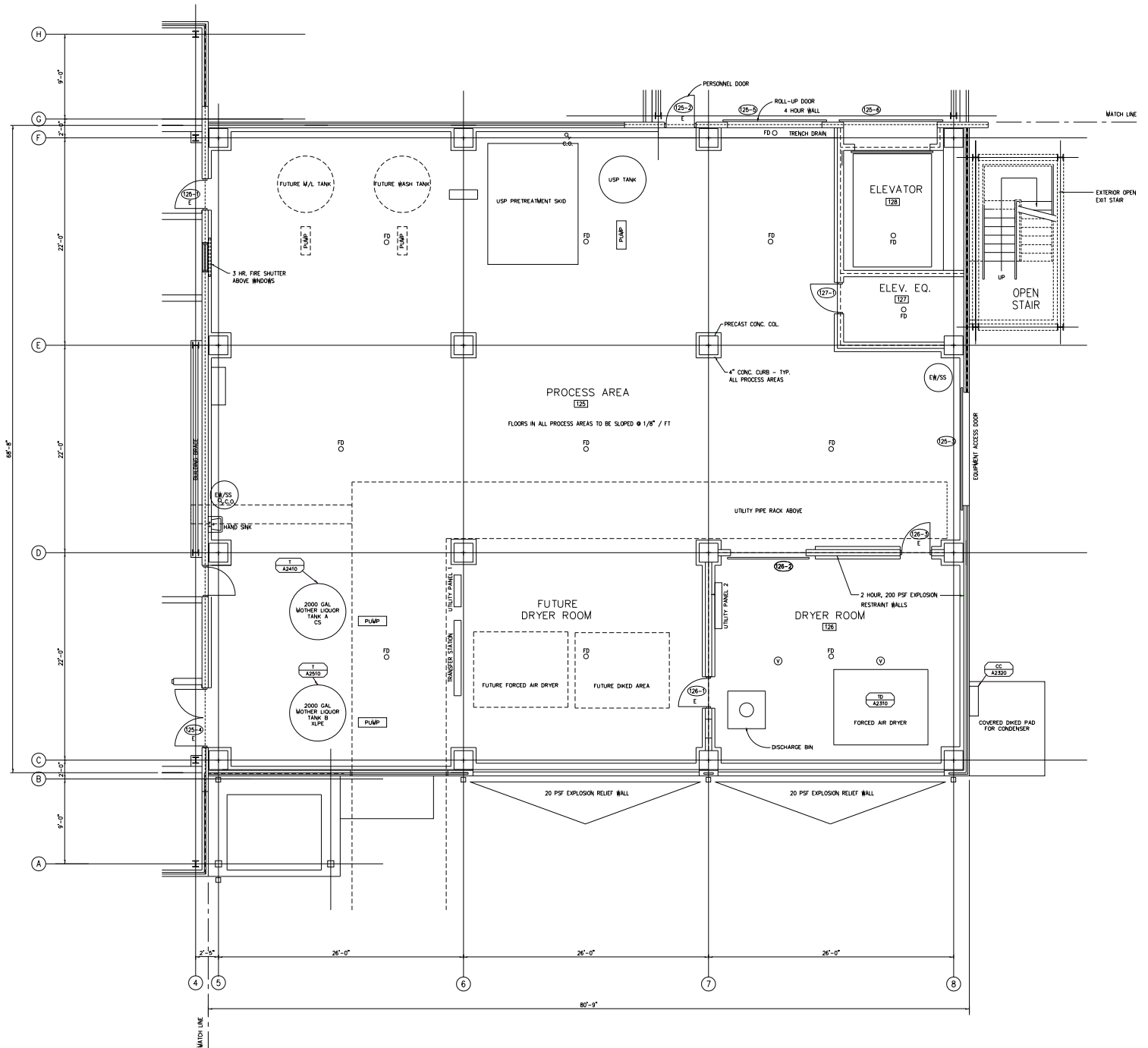
# Property Overview & Specifications

<b>309 Building</b>	
Size	33,100 SF
Dock Doors	3
Clear Height	1 <sup>st</sup> Floor - 16.5' 2 <sup>nd</sup> Floor - 22' 3 <sup>rd</sup> Floor - 24.5'
Sprinkler	Wet
Power	2,500 amps, 3-phase, 480/277 volt
Backup Generator	350 kW, diesel
<b>Warehouse</b>	
Size	15,000 SF
<b>Admin Building</b>	
Size	2,800 SF
<b>Maintenance Shop</b>	
Size	3,200 SF
<b>1106 Building</b>	
Size	20,000 SF



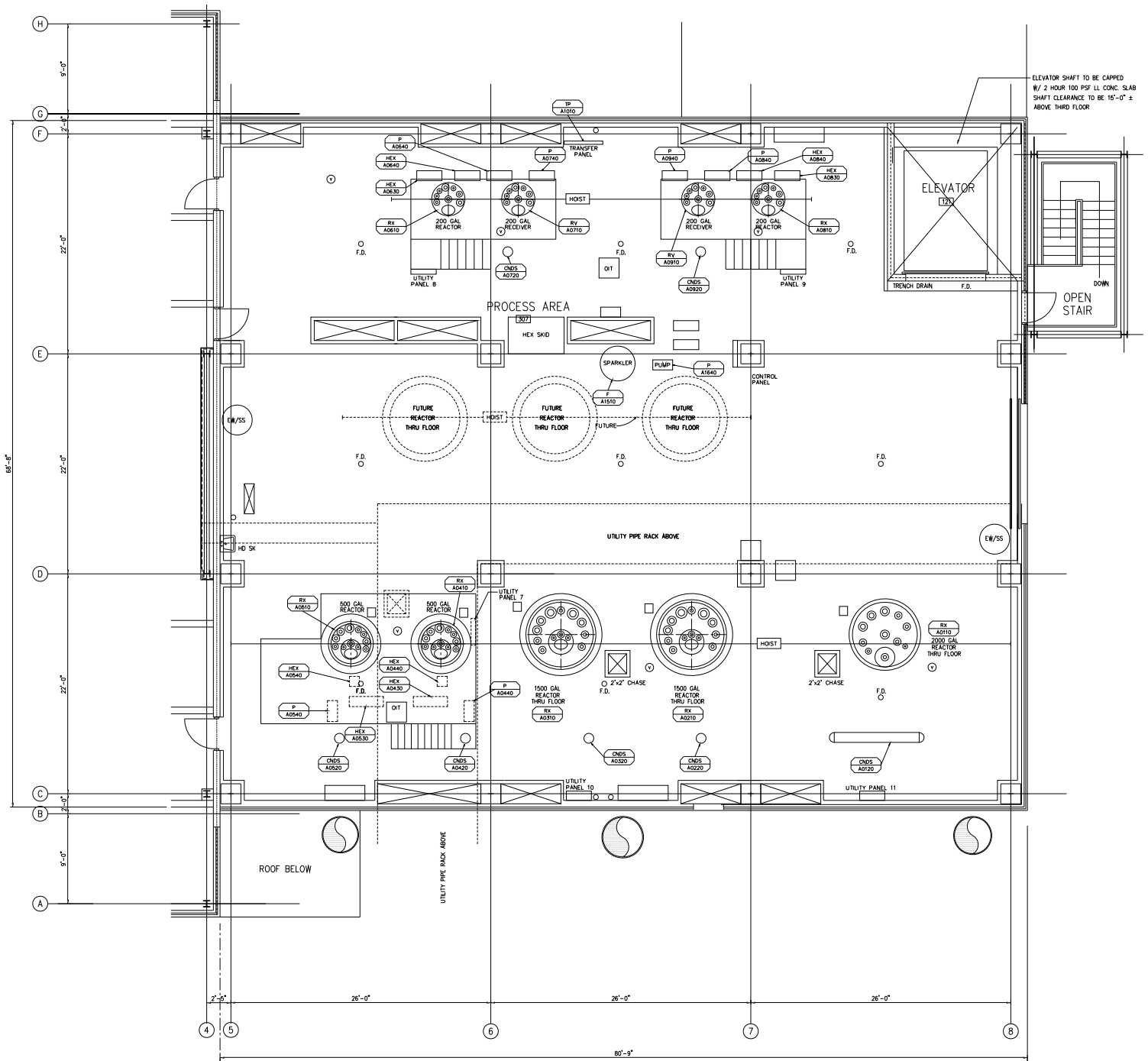
# Floorplans

## 309 Building 1<sup>st</sup> Floor | 5,600 SF



## 309 Building

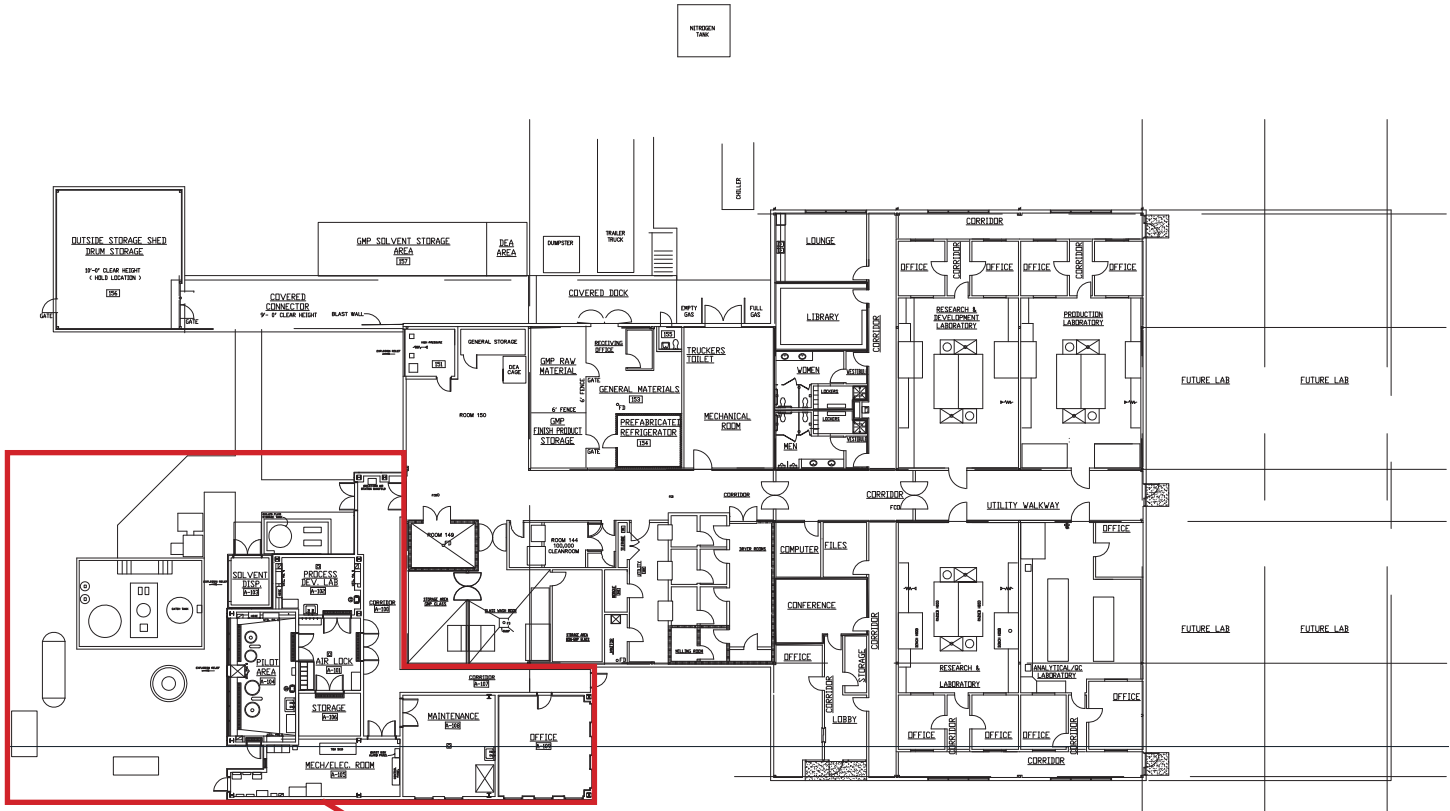
3<sup>rd</sup> Floor | 5,600 SF



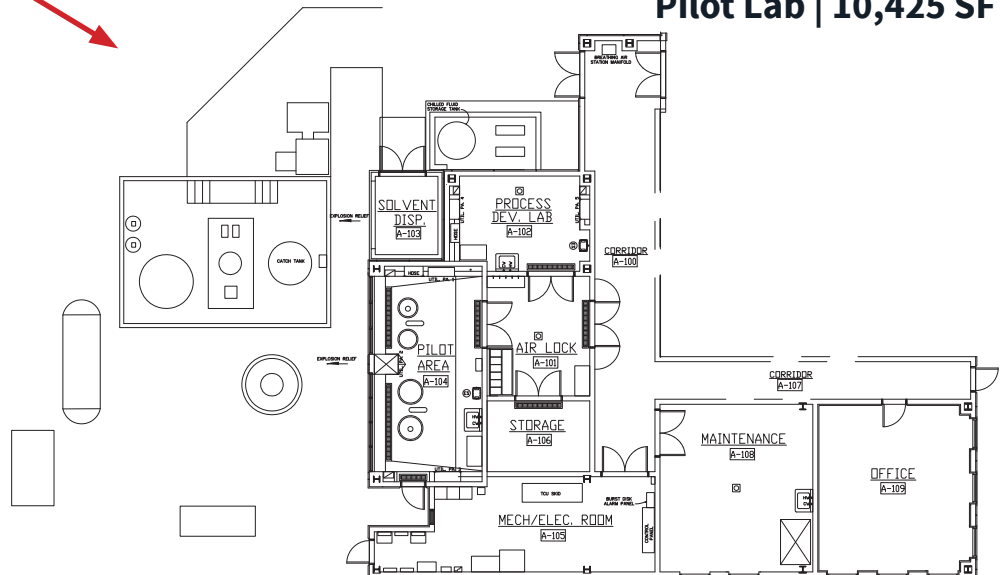


# Floorplans

## 1106 Building 20,000 SF

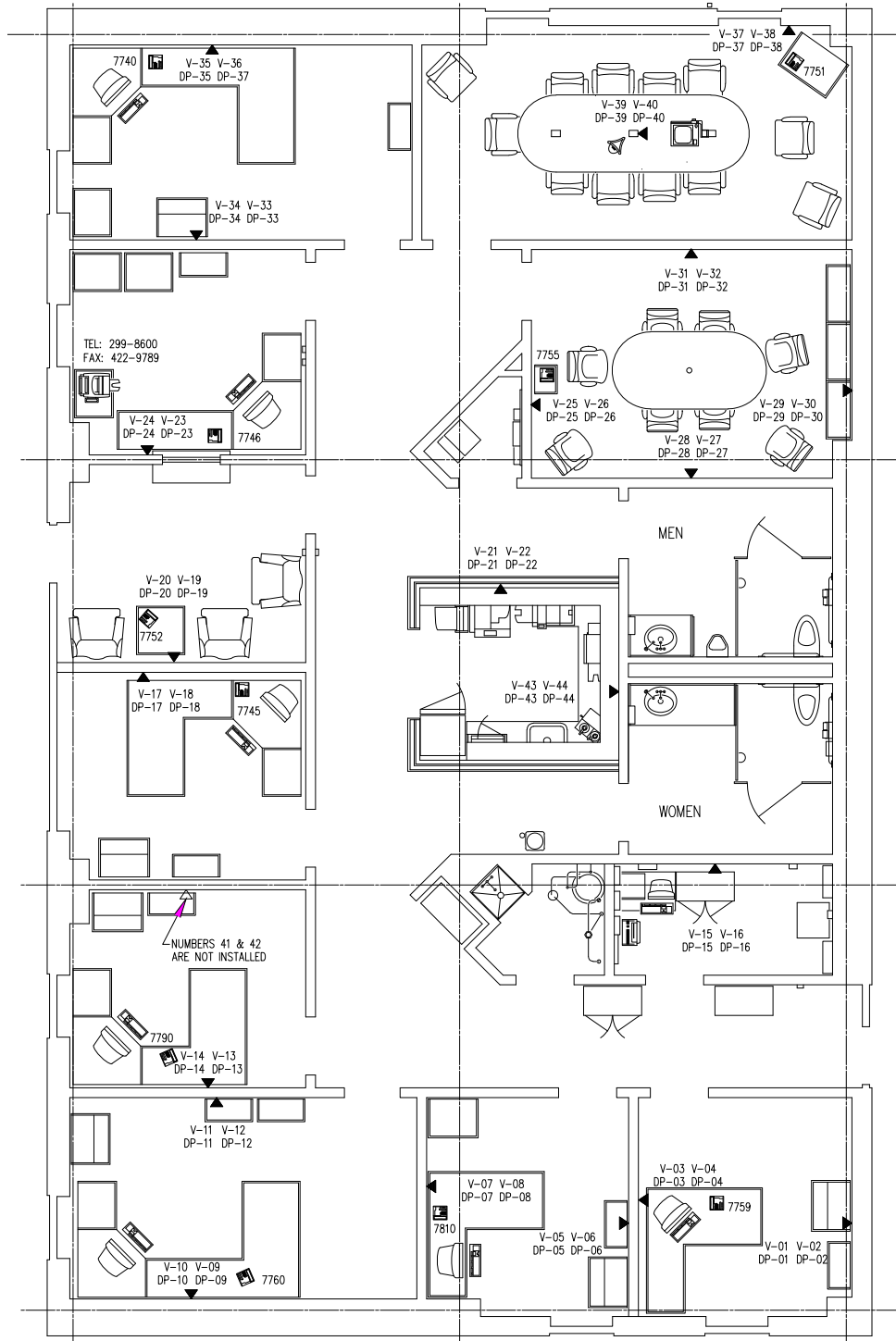


### Pilot Lab | 10,425 SF



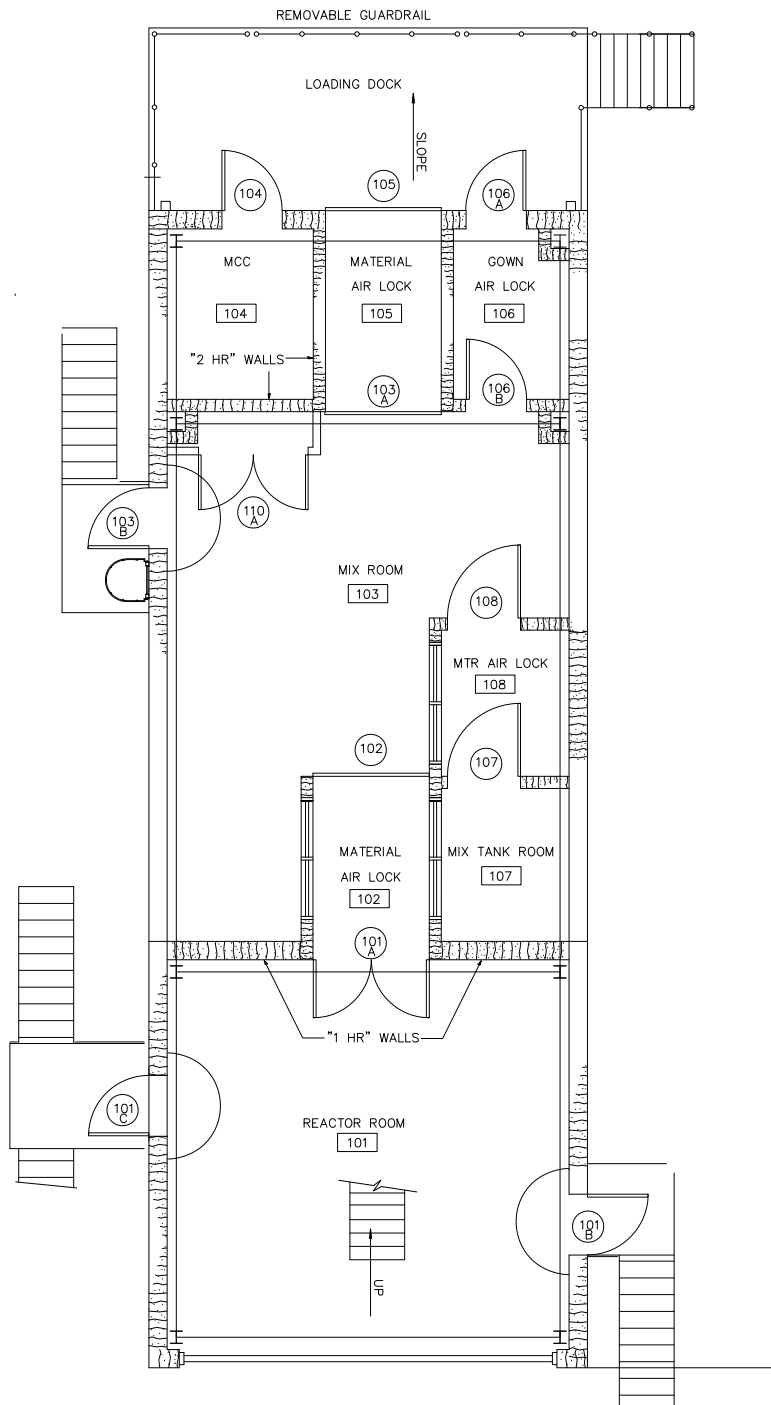
# Floorplans

## Admin Building 2,800 SF



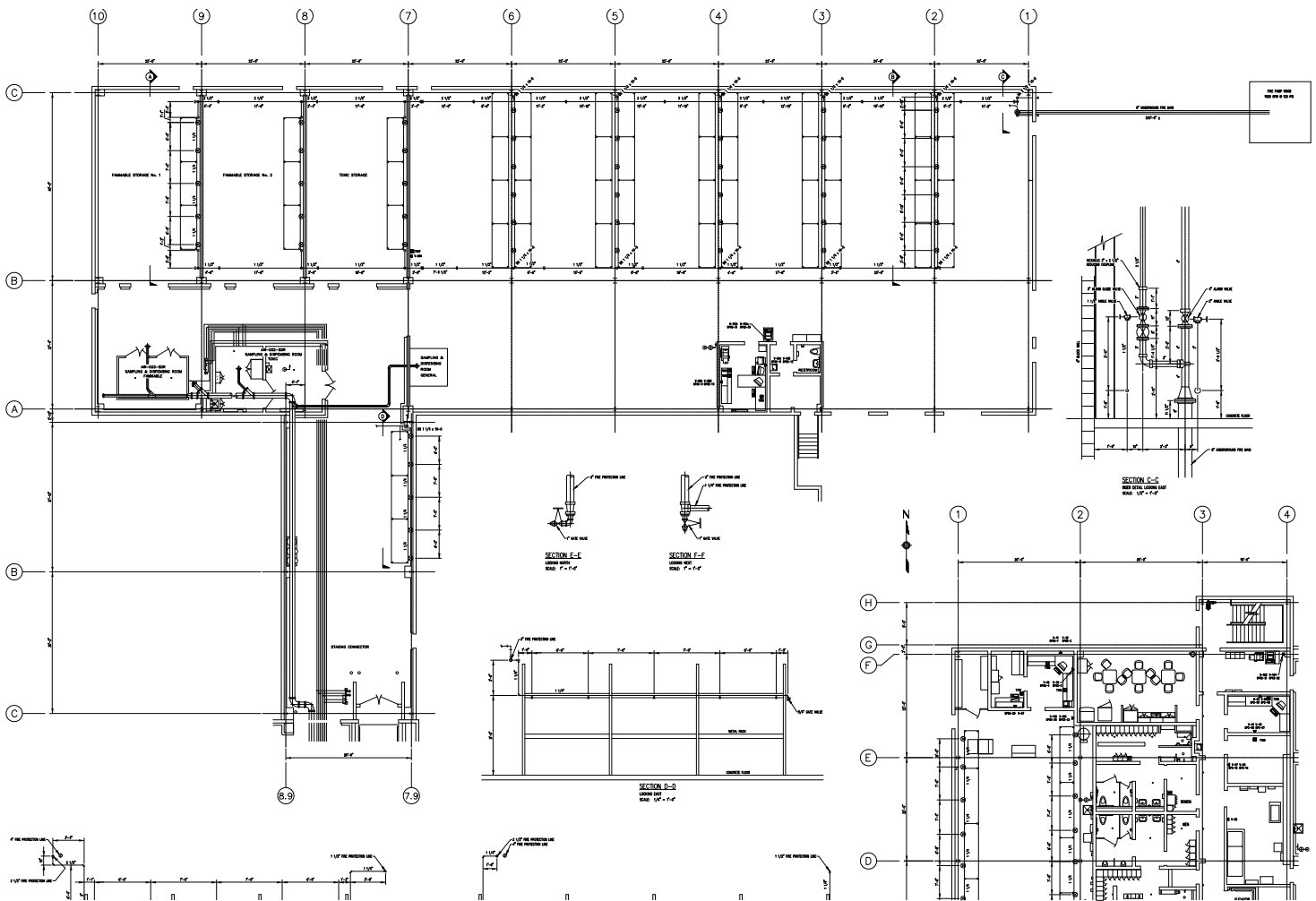
# Floorplans

## High Pressure Building 1,500 SF

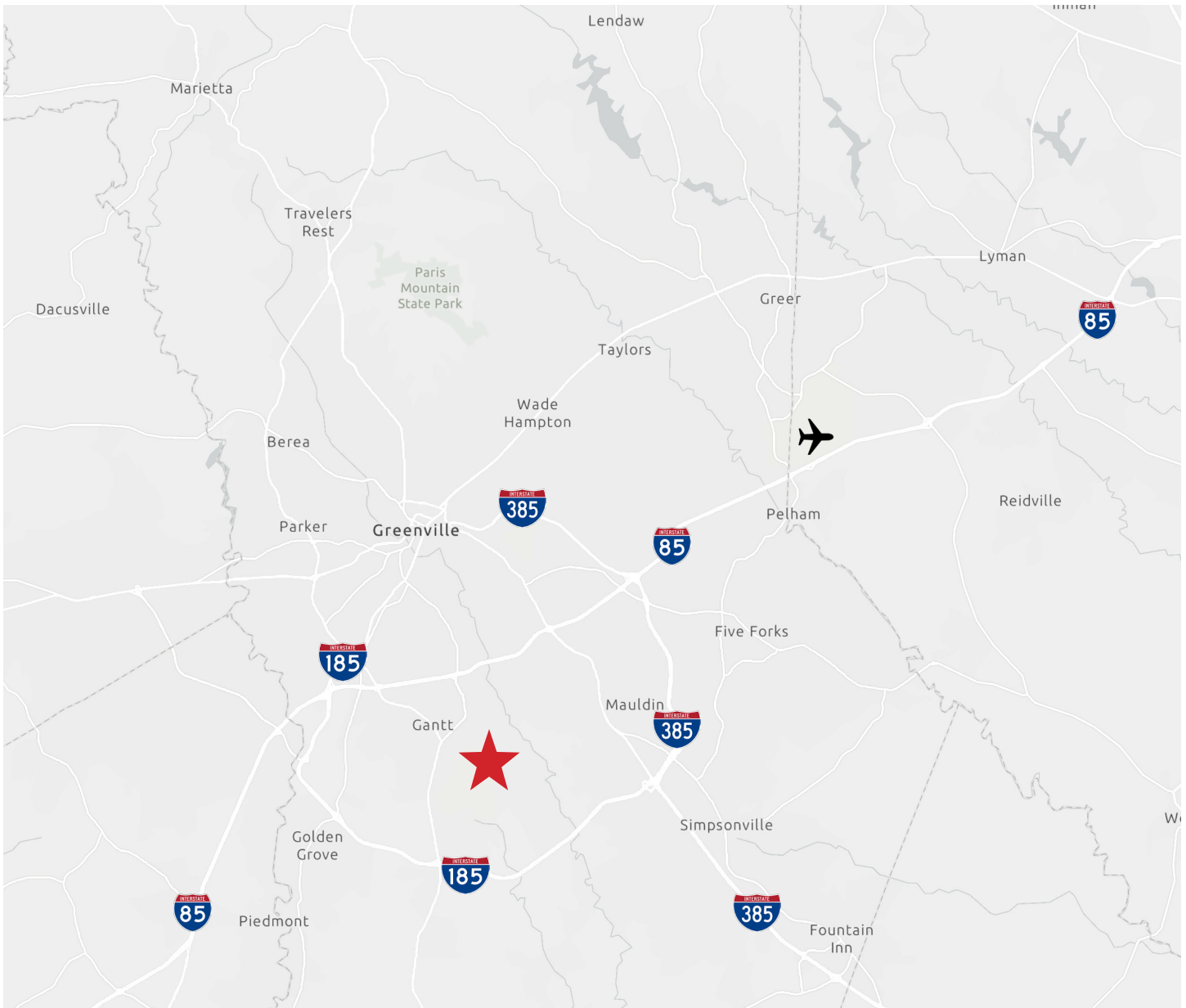


# Floorplans

## Warehouse 15,000 SF







**3.2 mi**  
to I-185

**3.4 mi**  
to I-85

**14.9 mi**  
to GSP Airport

**Perry Major**  
Managing Director  
Perry.Major@jll.com  
+1 864 567 7739

**Chad Stepp**  
Senior Vice President  
Chad.Stepp@jll.com  
+1 864 641 8536

