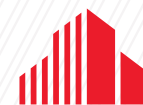




INVESTMENT SALE | 14,000 SF

**898 FEATHERSTONE ROAD
ROCKFORD, ILLINOIS**



**CUSHMAN &
WAKEFIELD**

PROPERTY FEATURES

Available for Sale/Leaseback, 898 Featherstone Road is located within the prestigious, Class A Guilford Square Office Park. The property's excellent location is close to major arterial roads and highways and it is near numerous retail amenities.

Building Size:	14,000 SF
Office Area:	12,000 SF
Warehouse Area:	2,000 SF
Site Area:	1.28 AC
Clear Height:	12'0"
Loading:	1 Exterior Dock & 1 Drive-In Door
Parking:	30 Car Stalls
Year Built:	1999
Power:	200 Amps, 3 Phase
Zoning:	C-1

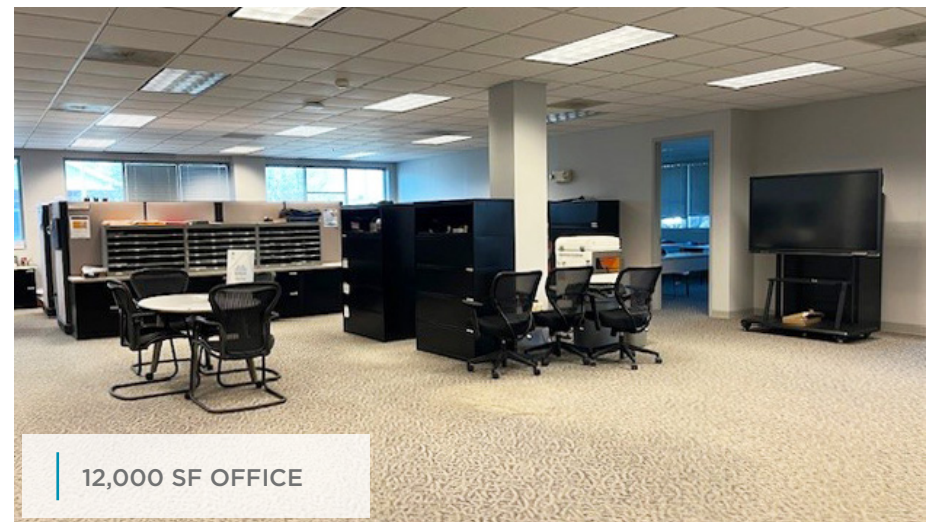
FINANCIAL TERMS

Sale Price:	Subject to Offer
Lease Expiration:	February 28, 2029
Lease Rate:	\$12.21 PSF Net
Annual Escalations:	3.0%
Tenancy:	Good Credit Tenant

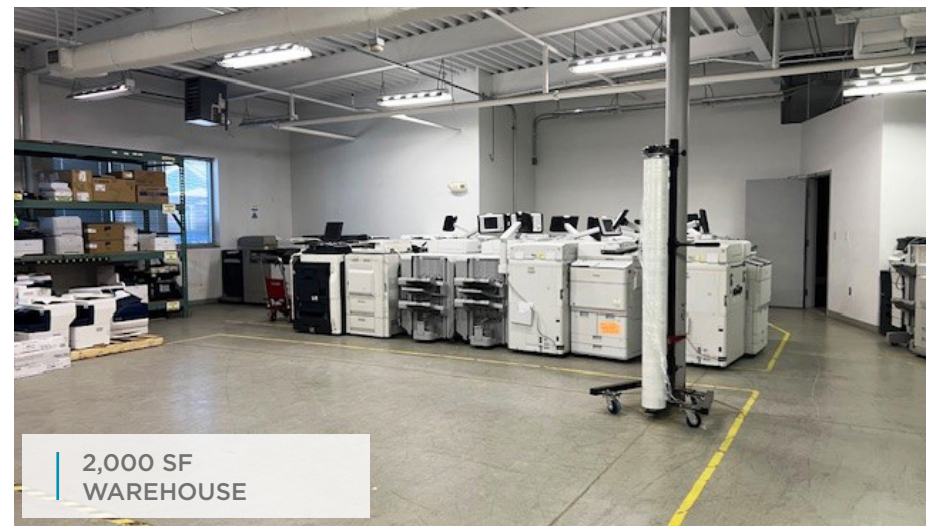
INVESTMENT SALE | 898 FEATHERSTONE RD, ROCKFORD, IL



CLASS A OFFICE ENTRY

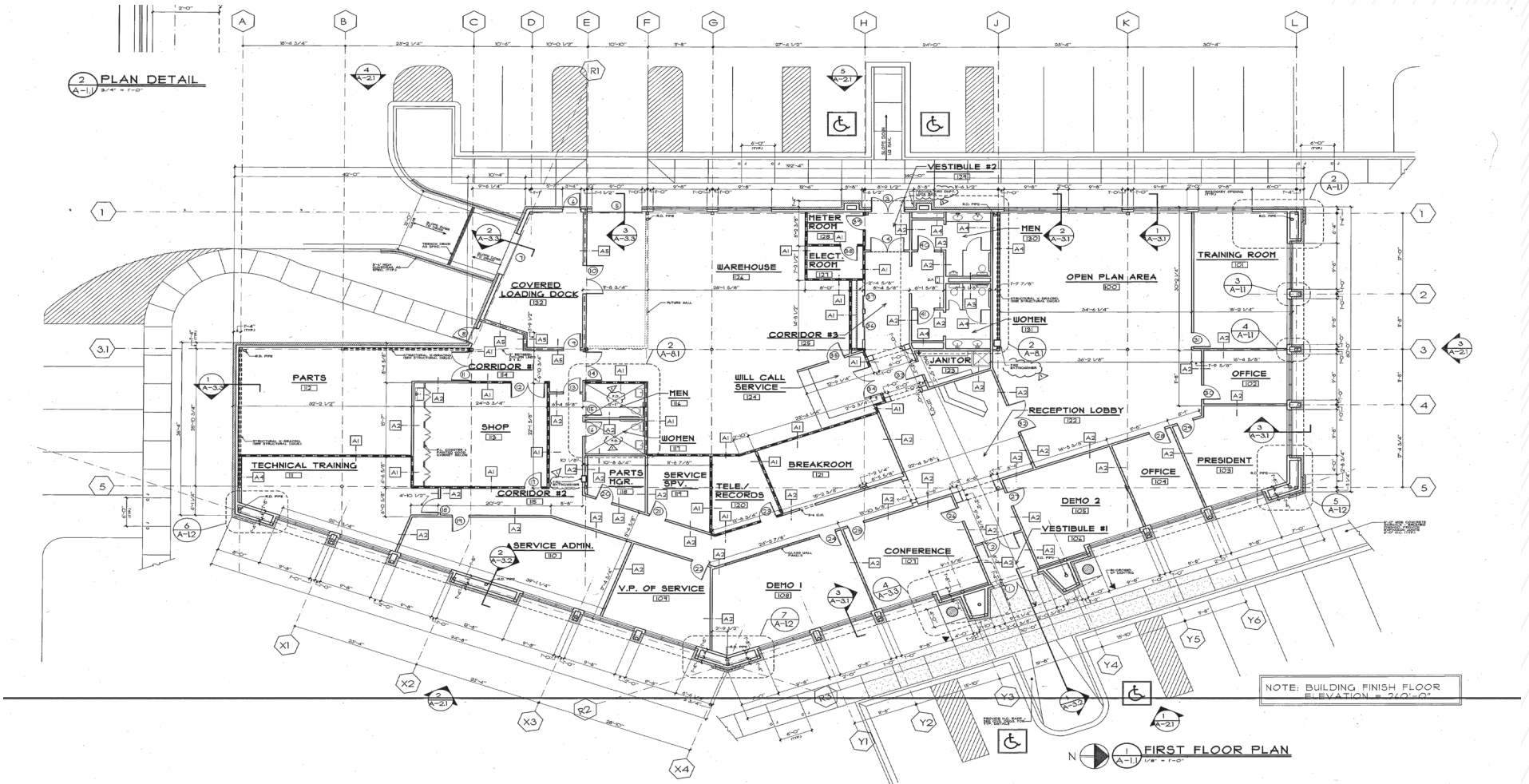


12,000 SF OFFICE



2,000 SF WAREHOUSE

SITE PLAN



EXISTING TENANT OVERVIEW

Marco Technologies, LLC (<https://www.marconet.com/locations/il/rockford>) provides voice, data, video, and print technology solutions to healthcare, education, government, business, and financial industries in the United States.

It provides managed print services, such as print assessment, monitoring and reporting, support and upgrades, and leases and rentals; managed voice services, including communications equipment sale, installation, and support; and managed information technology services, such as desktop/server management, support desk, network management, and client business review. The company also offers managed cloud services, such as Desktop-as-a-Service, hosted VoIP phone and PBX systems, and hosted unified communications; and business information technology services that include planning and design, implementation and project management, and client care and support. In addition, it provides digital printing press machines, software applications, copy center outsourcing, wide format printers, document management solutions, used machines, and copier/printer hard drive security.

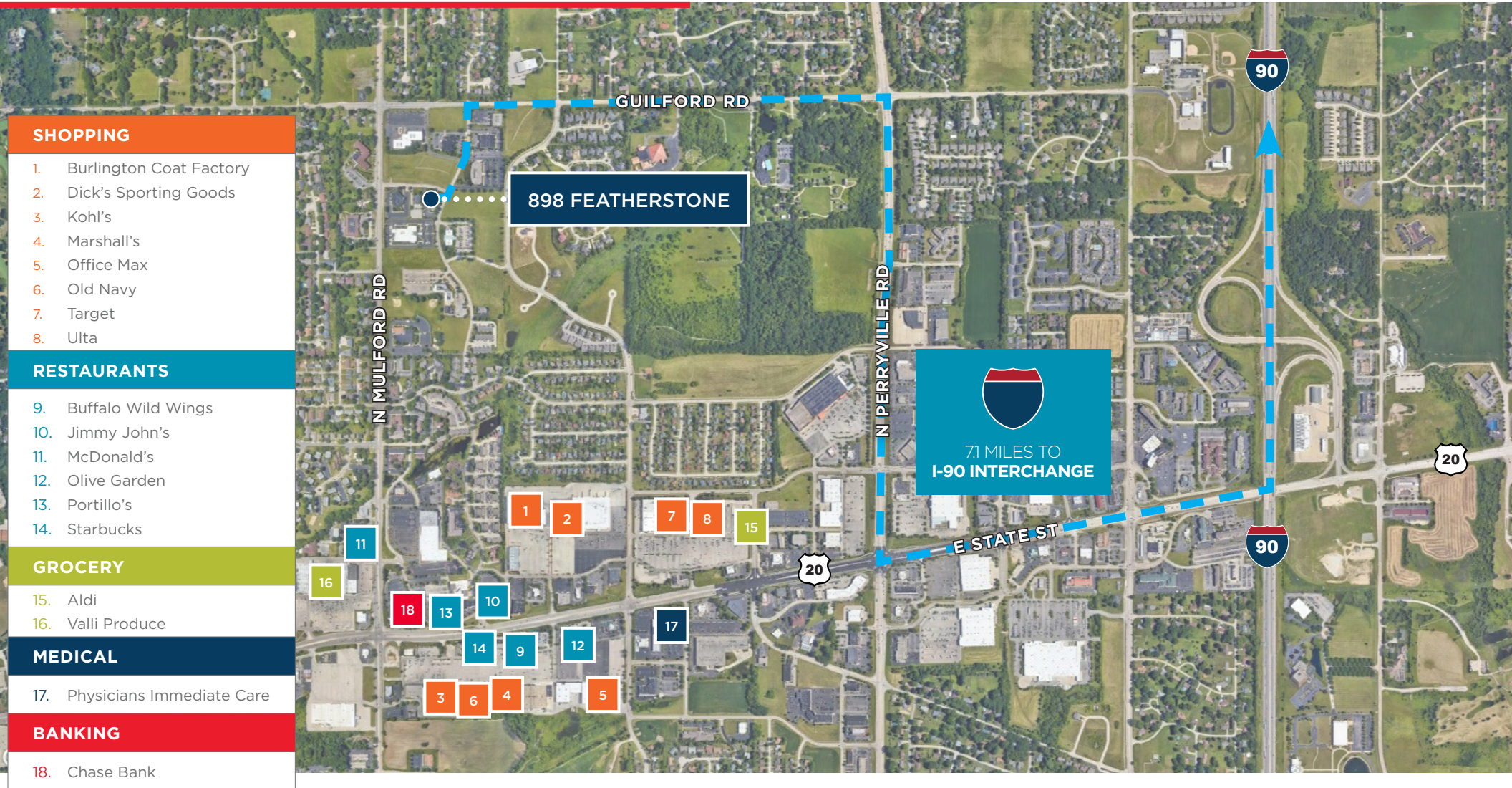
The company was founded in 1973 and is based in St. Cloud, Minnesota. It has additional offices in Minnesota, Wisconsin, North Dakota, South Dakota, Iowa, Illinois, and Nebraska.



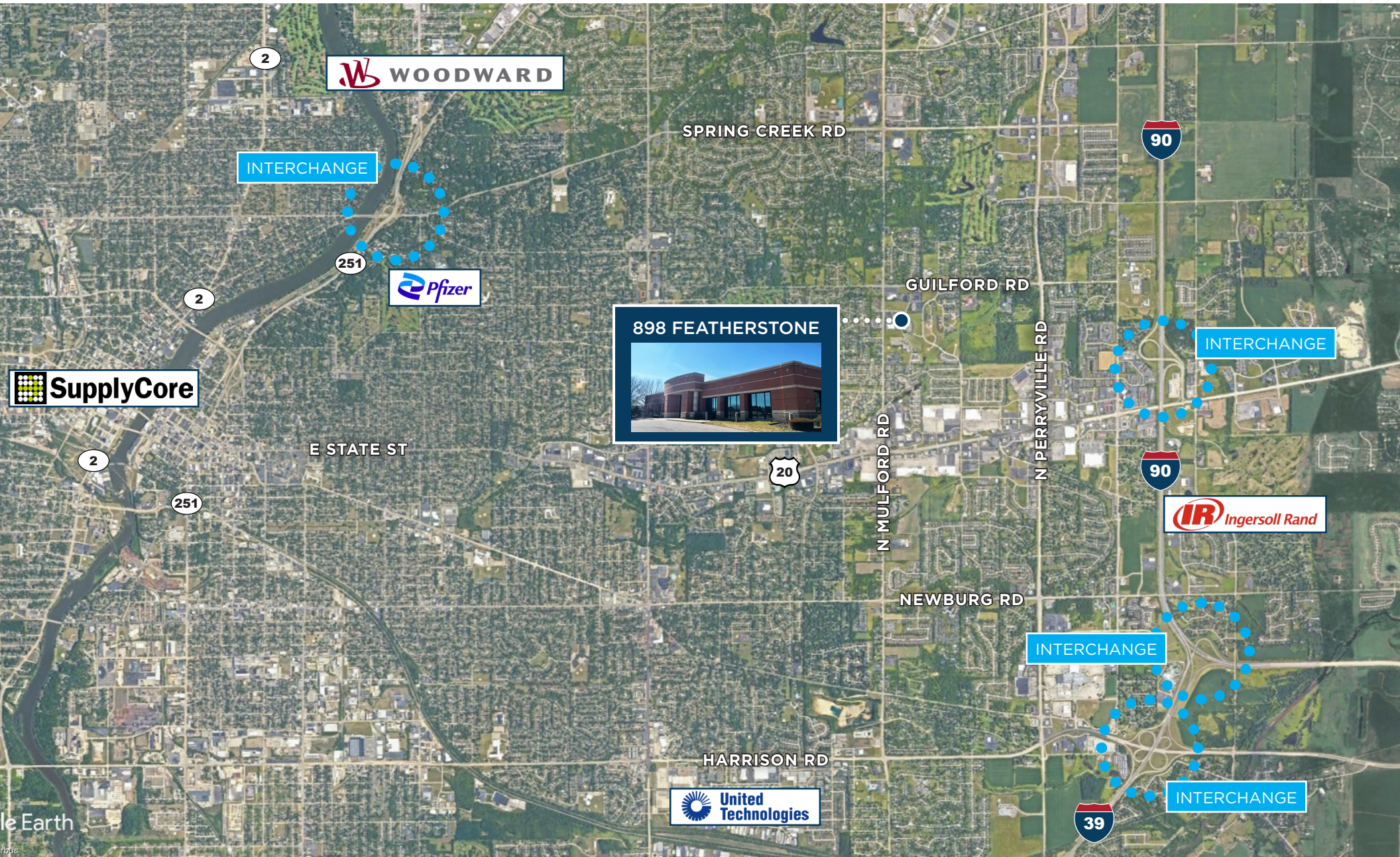
INGRESS-EGRESS MAP



AREA ACCESS MAP & AMENITIES



AERIAL OVERVIEW & SURROUNDING NOTABLE TENANTS





FOR MORE INFORMATION, CONTACT:

MICHAEL MAGLIANO

Executive Managing Director
+ 1 847 518 3259
michael.magliano@cushwake.com

AL CARUANA

Executive Managing Director
+1 847 720 1326
al.caruana@cushwake.com

©2024 Cushman & Wakefield. All rights reserved. The material in this presentation has been prepared solely for information purposes, and is strictly confidential. Any disclosure, use, copying or circulation of this presentation (or the information contained within it) is strictly prohibited, unless you have obtained Cushman & Wakefield's prior written consent. The views expressed in this presentation are the views of the author and do not necessarily reflect the views of Cushman & Wakefield. Neither this presentation nor any part of it shall form the basis of, or be relied upon in connection with any offer, or act as an inducement to enter into any contract or commitment whatsoever. NO REPRESENTATION OR WARRANTY IS GIVEN, EXPRESS OR IMPLIED, AS TO THE ACCURACY OF THE INFORMATION CONTAINED WITHIN THIS PRESENTATION, AND CUSHMAN & WAKEFIELD IS UNDER NO OBLIGATION TO SUBSEQUENTLY CORRECT IT IN THE EVENT OF ERRORS.

