

Insulated Warehouse Space | For Lease

11842-C S 33rd W Ave | Sapulpa, OK 74107

WIGGIN
PROPERTIES, LLC



Available Space

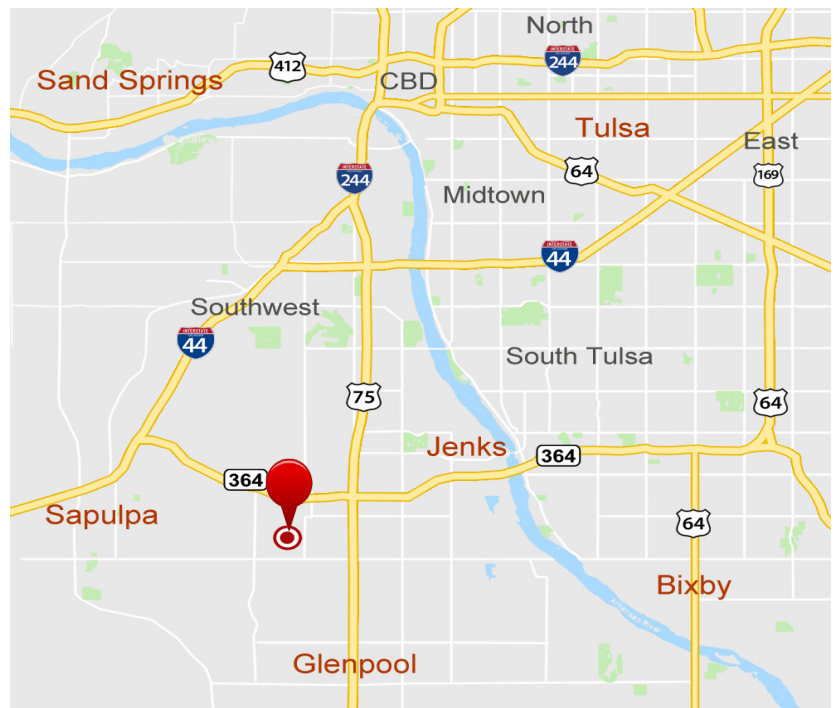
±5,000 SF

±1,406 SF Office

±1,406 SF Mezzanine Store (not included in SF)

Property Features

- (1) 10' x 12' Drive-In Doors
- Shop Heater
- Exhaust Fans
- 240 Volt 3-Phase Power
- 16.5' Clear Height
- Partially Fenced; Shared Yard
- Zoned CG
- Ample Parking; Level Topography
- Near Highway 75 and Highway 117



John Watchous

Advisor

918.991.8519

jwatchous@wigginprop.com

Shawna Hale, CCIM

Advisor

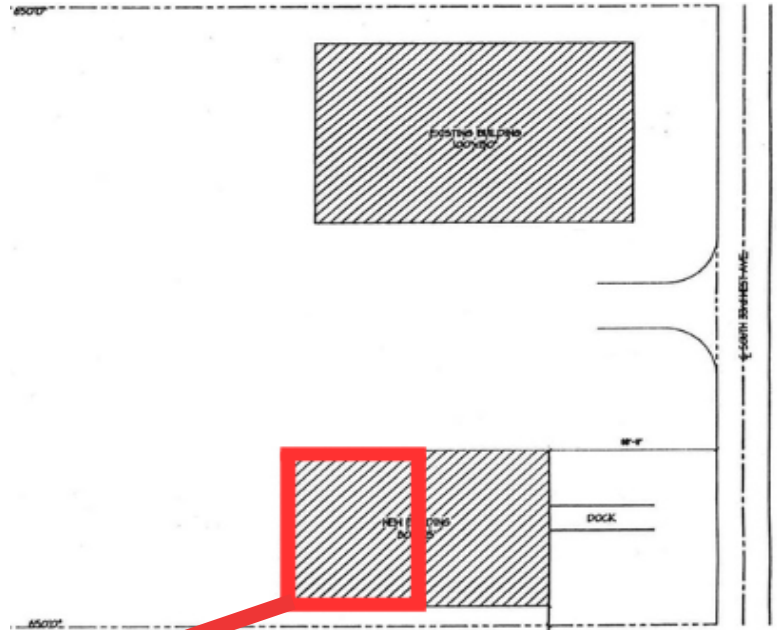
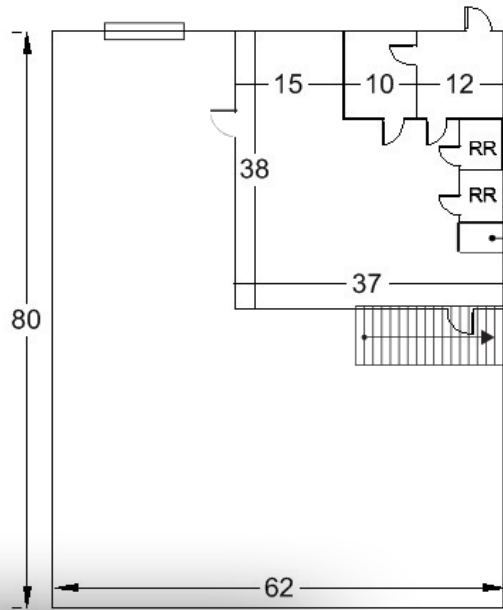
918.282.8664

shale@wigginprop.com

This material is provided for information purposes only. It is from sources believed to be reliable. However, Wiggin Properties makes no warranties or representations, expressed or implied, as to the accuracy or sufficiency of the information. It is presented subject to errors, omissions, changes or withdrawal without notice. Square footage is provided by the local County Assessor or the Owner. Photos and graphics with copyrights by Costar, Google, Wiggin Properties and independent contractors are used with permission.

11842-C S 33rd W Ave | Sapulpa, OK 74107

WIGGIN
PROPERTIES, LLC



jwatchous@wigginprop.com

shale@wigginprop.com

This material is provided for information purposes only. It is from sources believed to be reliable. However, Wiggin Properties makes no warranties or representations, expressed or implied, as to the accuracy or sufficiency of the information. It is presented subject to errors, omissions, changes or withdrawal without notice. Square footage is provided by the local County Assessor or the Owner. Photos and graphics with copyrights by Costar, Google, Wiggin Properties and independent contractors are used with permission.