

For Lease

26500 JEFFERSON AVENUE, SUITE B

±3,200 SF Automotive Space

MURREITA, CA





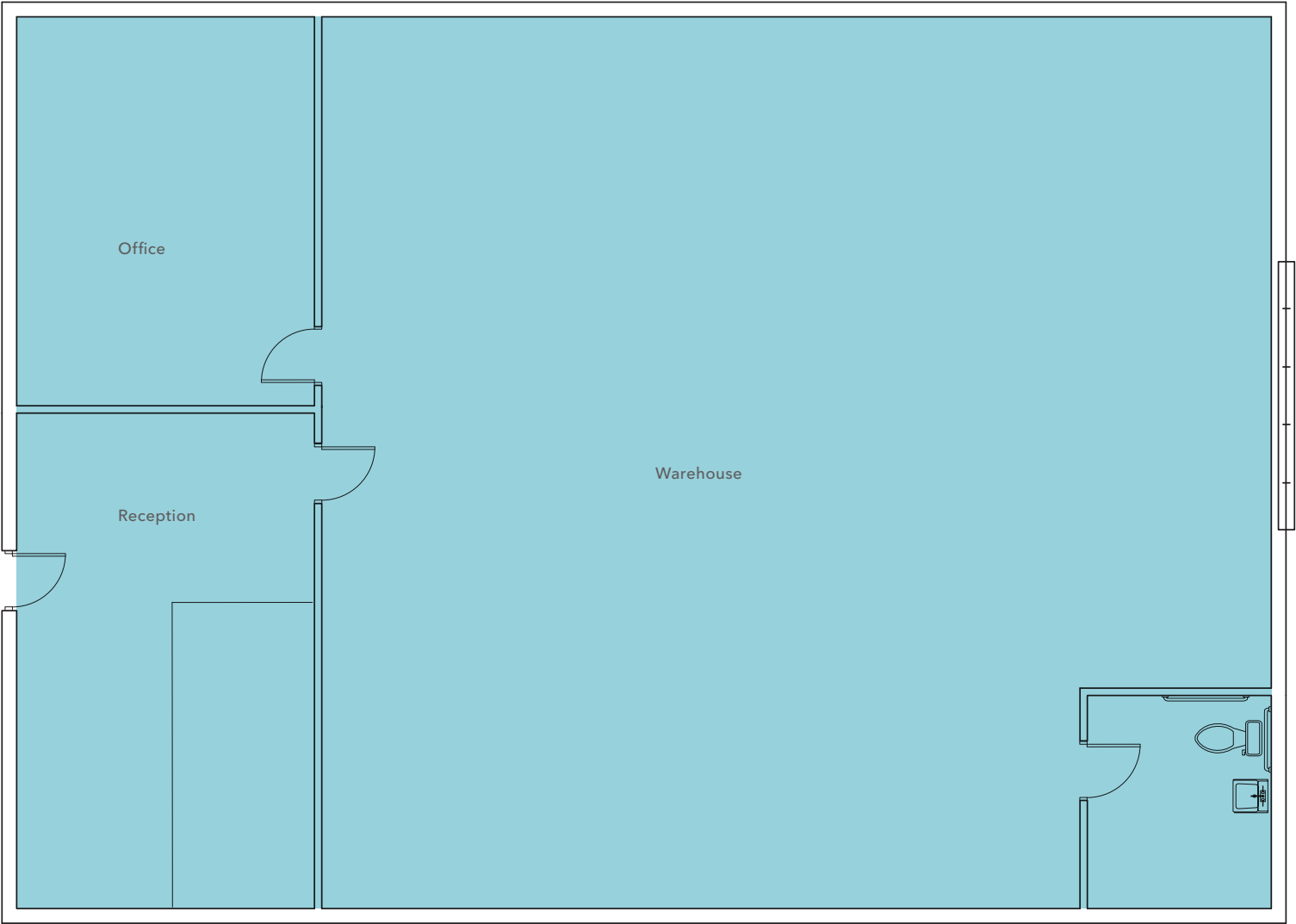
Located in Murrieta's prime business district, this 3,200 SF suite is a great option for a retail or automotive business uses.

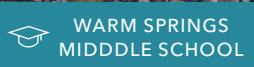
YEAR BUILT	2006
SUITE B SF	3,200
LOADING	1 Grade-level door (10'x12')
WAREHOUSE CLEAR HEIGHT	18'
WAREHOUSE FEATURES	Air lines & power
POWER	200 Amps, 120/208Volts, 3 PH
LOCATION	At the signalized intersection of Jefferson Ave & Corning Pl
LEASE RATE	\$1.55 + \$0.10 CAM

3,200
SUITE B TOTAL SF

\$4,960
LEASE RATE + \$320 CAM

SUITE
B
FLOOR
PLAN





MURRIETA



Harvester Lake



TEMECULA



Rancho California Rd



HIGHLY-ACCESSIBLE LOCATION

Conveniently located near Interstate 15

Easy for visitors to locate

1.2 Miles to Murrieta Hot Springs Rd

Close by various amenities including: Wells Fargo, Wal-Mart, Home Depot, Staples, Shell, Rancho Spring Medical Center, & 7-Eleven

26500 JEFFERSON AVE



Exclusively leased by

MATT CALVET
858.442.2072
matt.calvet@kidder.com
LIC N° 01949267

KIDDER.COM

This information supplied herein is from sources we deem reliable. It is provided without any representation, warranty, or guarantee, expressed or implied as to its accuracy. Prospective Buyer or Tenant should conduct an independent investigation and verification of all matters deemed to be material, including, but not limited to, statements of income and expenses. Consult your attorney, accountant, or other professional advisor.

