

**FOR SUBLEASE**  
**GRADER PLACE**  
11060 Grader Street / Dallas, Texas



**SUITE 11060 - 20,000 SF**  
AVAILABLE FEBRUARY 2025

TERM THROUGH  
SEPTEMBER 2027



# SUBLEASE HIGHLIGHTS



## GRADER PLACE 11060 GRADER STREET | DALLAS, TEXAS

**64,833 SF**

TOTAL BUILDING SIZE

**1**

BAY

**20,000 SF**

TOTAL SUBLEASE SIZE

**20'**

CLEAR HEIGHT

**SEPTEMBER 2027**

SUBLEASE EXPIRATION

**\$5.00 NNN**

LEASE RATE

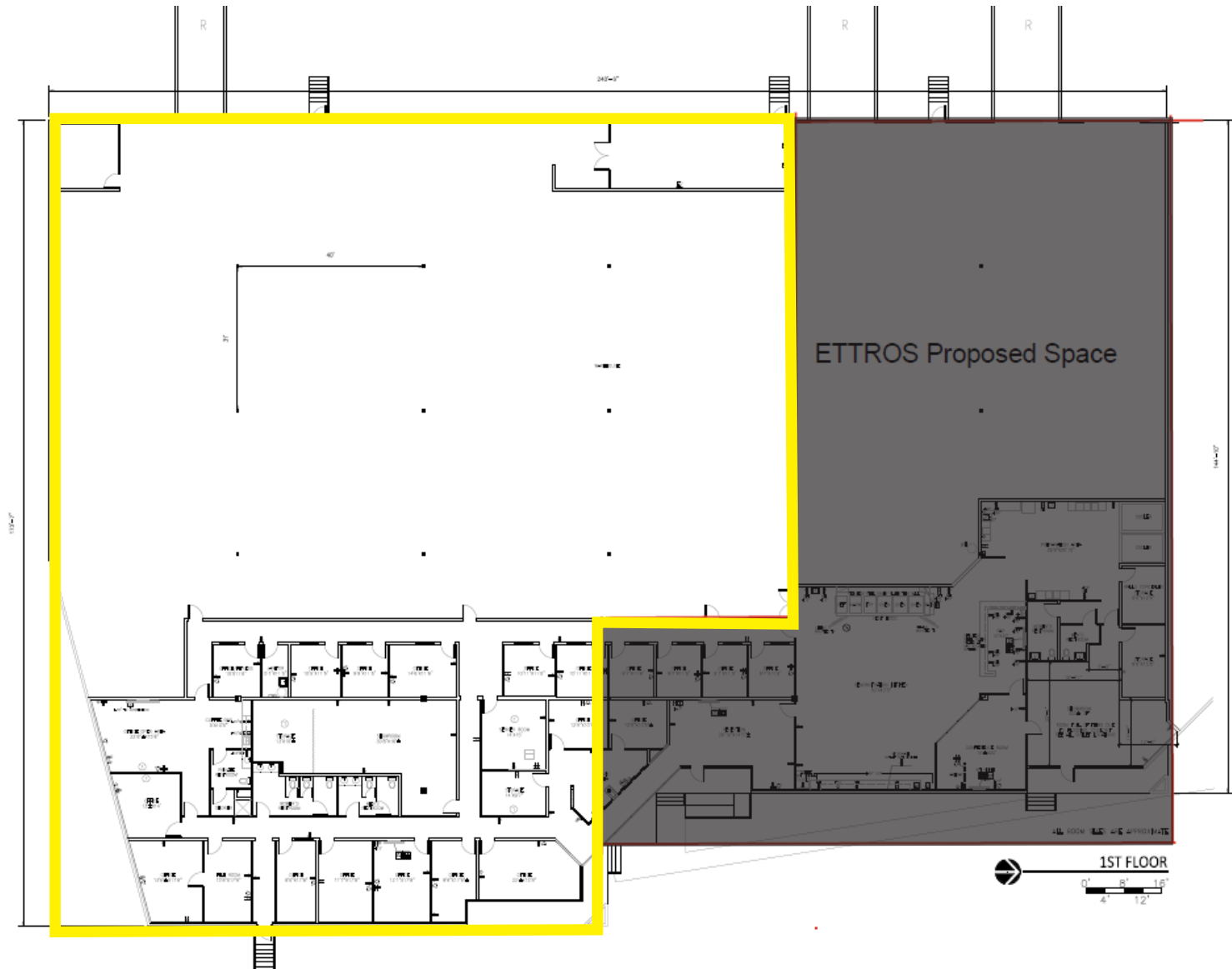


Clay Balch  
Executive Director  
+1 972 663 9853  
clay.balch@cushwake.com



Jake Griffin  
Senior Associate  
+1 972 663 9609  
jake.griffin@cushwake.com

# SUBLEASE SITE PLAN



Clay Balch  
Executive Director  
+1 972 663 9853  
clay.balch@cushwake.com



Jake Griffin  
Senior Associate  
+1 972 663 9609  
jake.griffin@cushwake.com