

\$475,000**8049 E 500 N
Leesburg, IN 46538****PROPERTY HIGHLIGHTS**

Sale Price: \$475,000

Land: 1.01 Acres

Zoning: Commercial

Utilities: Well & Septic

Taxes: \$1,628.17

**PROPERTY DETAILS**

Rare commercial development opportunity located just South of North Webster at 8049 E 500 N. This vacant parcel offers a prime blank slate for a wide range of commercial uses in an area with limited available land. With excellent visibility, convenient access, and proximity to established businesses and growing residential communities, the site is well-positioned for future development or investment. The lot has existing well and septic but will likely need a new septic system.

**Make contact.**

Brycen Wrigley
Broker
Cell: 574-849-7221
Direct: 574-501-3201
brycen@endeavour-grp.com

Endeavour Commercial
22047 Endeavour Dr., Elkhart, IN 46514
P 574-292-7995
endeavour-grp.com



ENDEAVOUR
COMMERCIAL

COMMERCIAL LAND FOR SALE



Make contact.

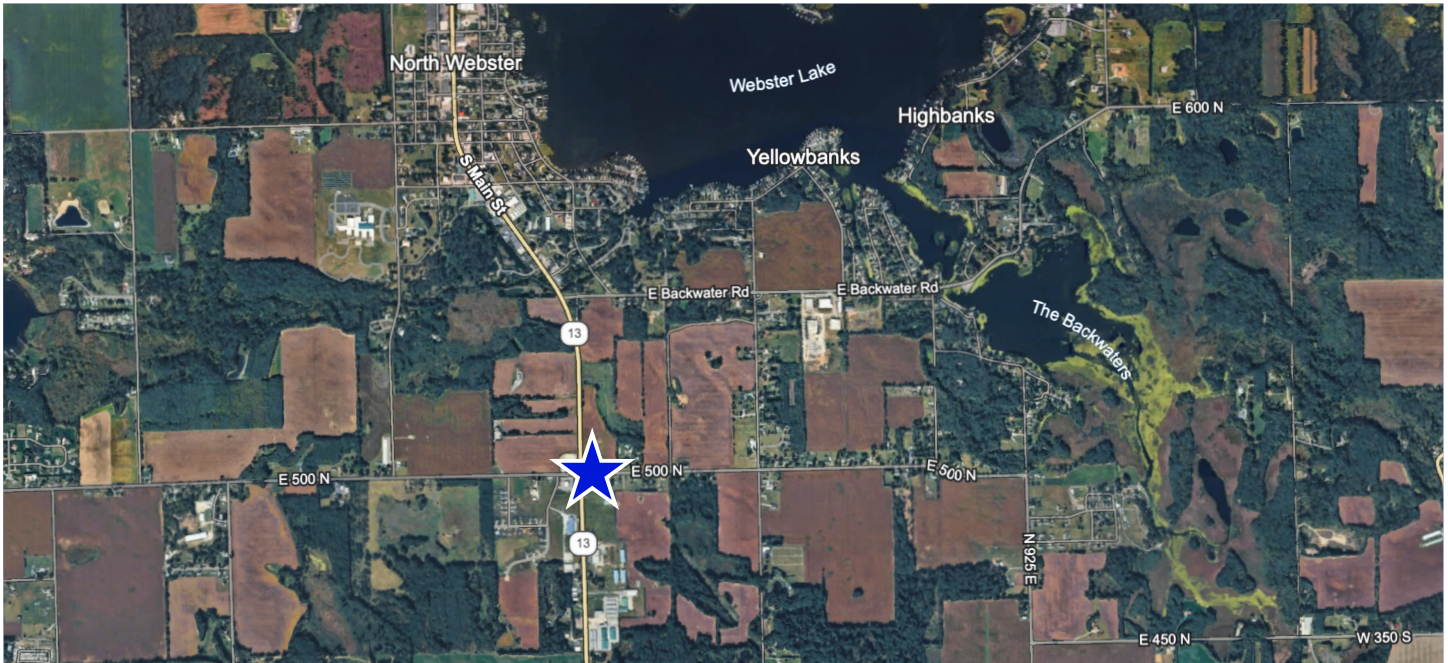
Brycen Wrigley
Broker
Cell: 574-849-7221
Direct: 574-501-3201
brycen@endeavour-grp.com

Endeavour Commercial
22047 Endeavour Dr., Elkhart, IN 46514
P 574-292-7995
endeavour-grp.com



ENDEAVOUR
COMMERCIAL

COMMERCIAL LAND FOR SALE



Make contact.

Brycen Wrigley
Broker
Cell: 574-849-7221
Direct: 574-501-3201
brycen@endeavour-grp.com

Endeavour Commercial
22047 Endeavour Dr., Elkhart, IN 46514
P 574-292-7995
endeavour-grp.com