



THE DISTRICT

FROM WORK TO PLAY ON THE BOULEVARD

NEW 520,000 SQ FT INDUSTRIAL | SHOWROOM | RECREATION





THE DISTRICT

Conveniently located on Boynton Beach Boulevard immediately west of the Florida Turnpike, The District spans 47 acres and plans to integrate a diverse range of light industrial and recreational uses, covering approximately 520,000 square feet. The site also holds approvals for a 138,000-square-foot, four-story self-storage, and wine storage facility.

The Project enjoys immediate proximity to an array of amenities, including numerous restaurants, parks, medical facilities, financial institutions, and grocery stores. This central placement ensures unparalleled accessibility and convenience for all who engage with this state-of-the-art commercial project.

The team responsible for the development of The District has created a well-planned blueprint for the project. The group consists of accomplished real estate professionals with decades of experience, having completed numerous successful projects that have positively impacted the communities in which they were built.



8289 BOYNTON BEACH BOULEVARD, BOYNTON BEACH, FLORIDA

AVAILABLE FOR LEASE

BUILDING A
100,114 G.S.F

BUILDING E
62,942 G.S.F

BUILDING G
125,483 G.S.F

BUILDING C
26,000 G.S.F

BUILDING F
98,436 G.S.F

BUILDING H
87,231 G.S.F

BUILDING D
20,000 G.S.F



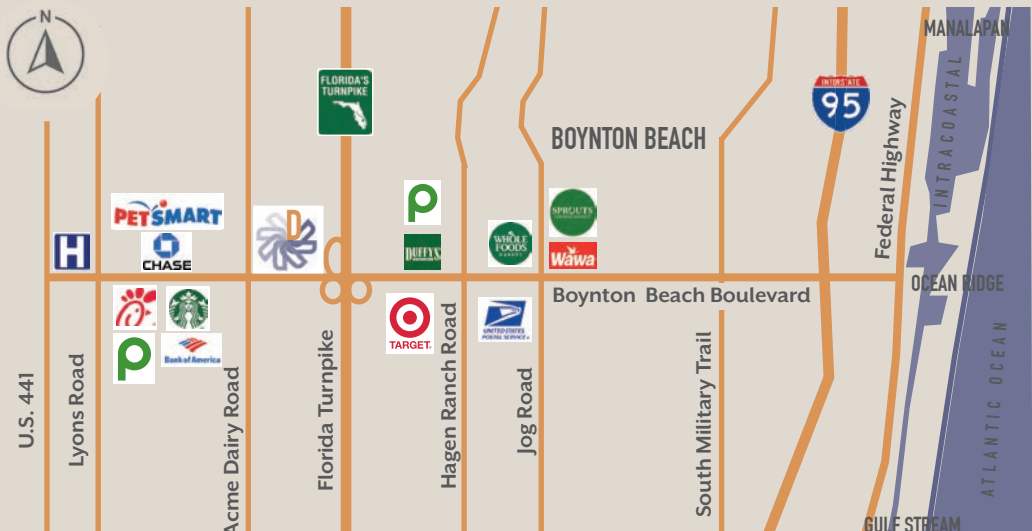
THE DISTRICT

The District is located on the north side of West Boynton Beach Boulevard, between Acme Dairy Road (west boundary) and the Florida Turnpike. The 47 acre site has access on both West Boynton Beach Boulevard and Acme Dairy Road.



WHAT'S NEARBY

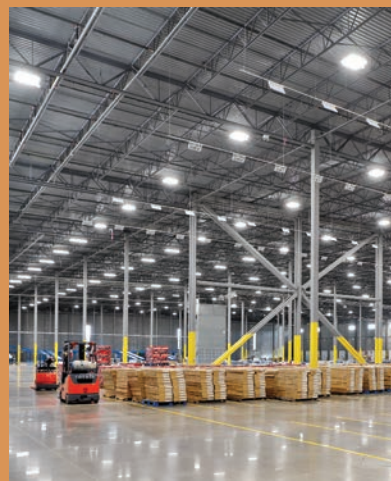
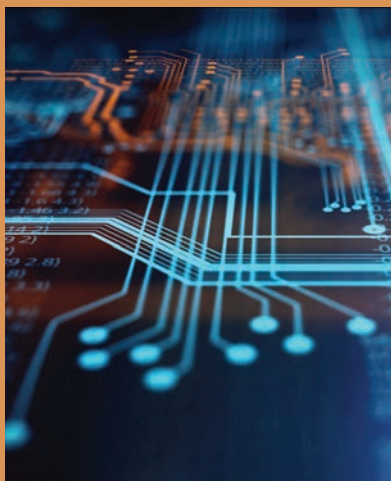
Palm Beach International Airport 19.8 Miles
 Sprouts Market 2.2 Miles
 Whole Foods Market .9 Miles
 Bethesda Hospital 1.6 Miles
 Publix Super Market 1.4 Miles
 Starbucks 1.29 Miles
 Sushi Yama 1.29 Miles
 Walgreens 1.3 Miles
 Target 1 Mile
 Chic-Fil-A 1.4 Mile
 Chase Bank 1.4 Miles
 Canyon Town Center 1.3 Miles
 Canyon District Park 1 Mile
 Sunset Palm Elementary 0.6 Miles
 Boynton Beach Mall 5.1 Miles
 West Boynton Middle School 0.6 Mile





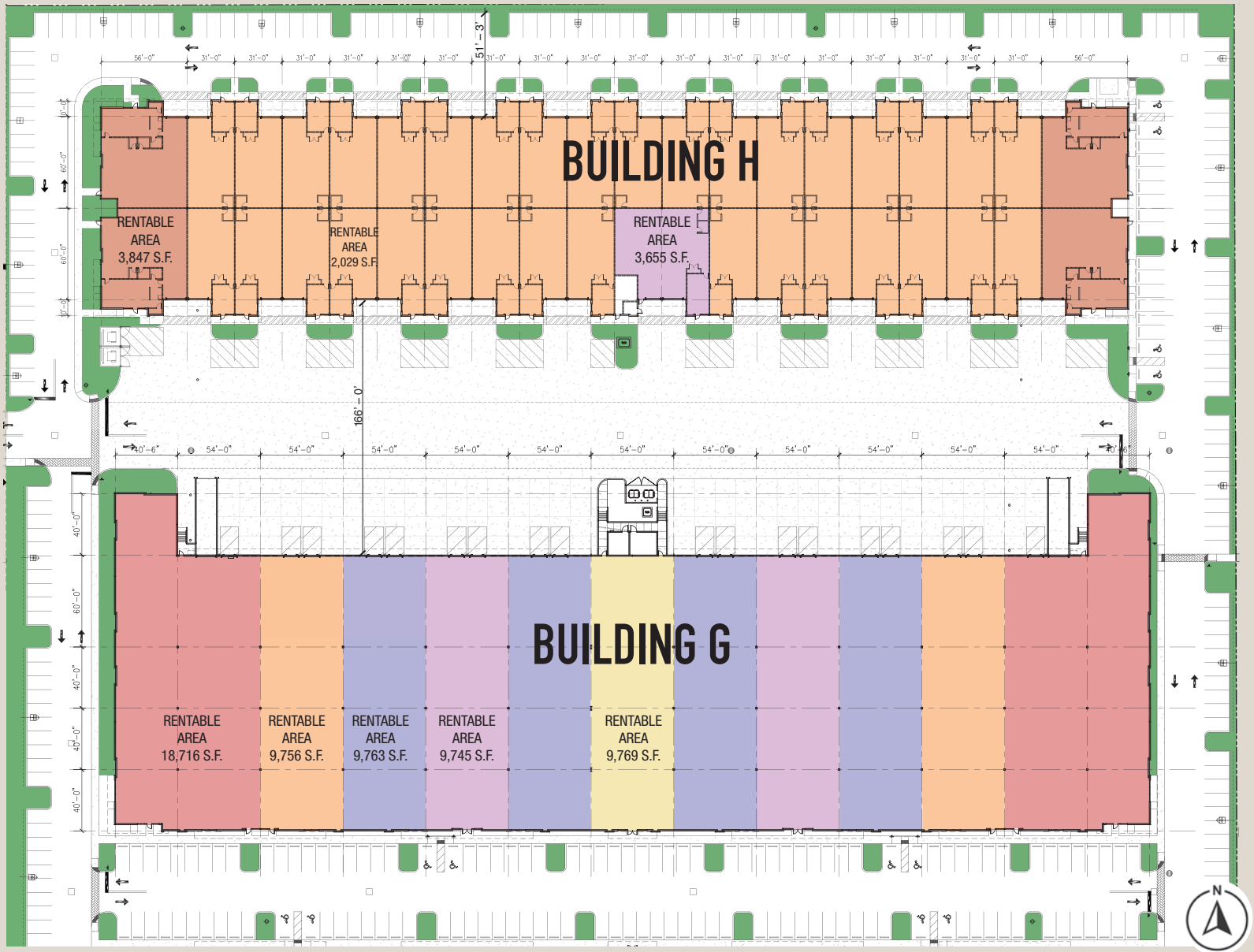
BUILDINGS G & H

8289 BOYNTON BEACH BOULEVARD, BOYNTON BEACH, FLORIDA



PROJECT DEVELOPED BY





BUILDING G DISTRIBUTION

125,297 G.S.F

- Impact Glass and Doors
- 32 Ft. Clear
- Dock High
- Light Manufacturing
- R19 Roof Insulation
- Build-To-Suit Office
- ESFR Fire Sprinklers
- EV Charging Stations

BUILDING H SMALL BAY

87,231 G.S.F

- Impact Glass and Doors
- 18 Ft. Clear
- Grade Level
- R19 Roof Insulation
- Build-To-Suit Office
- Fire Sprinklers
- EV Charging Stations

LEASING TEAM

Brian Ahearn, CCIM
954.937.4540
BAhearn@butters.com

JC Conte, SIOR
954.336.8001
JCConte@butters.com

Zach Channing
561.212.8403
zach@channingcorporation.com

Seth Spiegel
561.717.3400
seth@channingcorporation.com



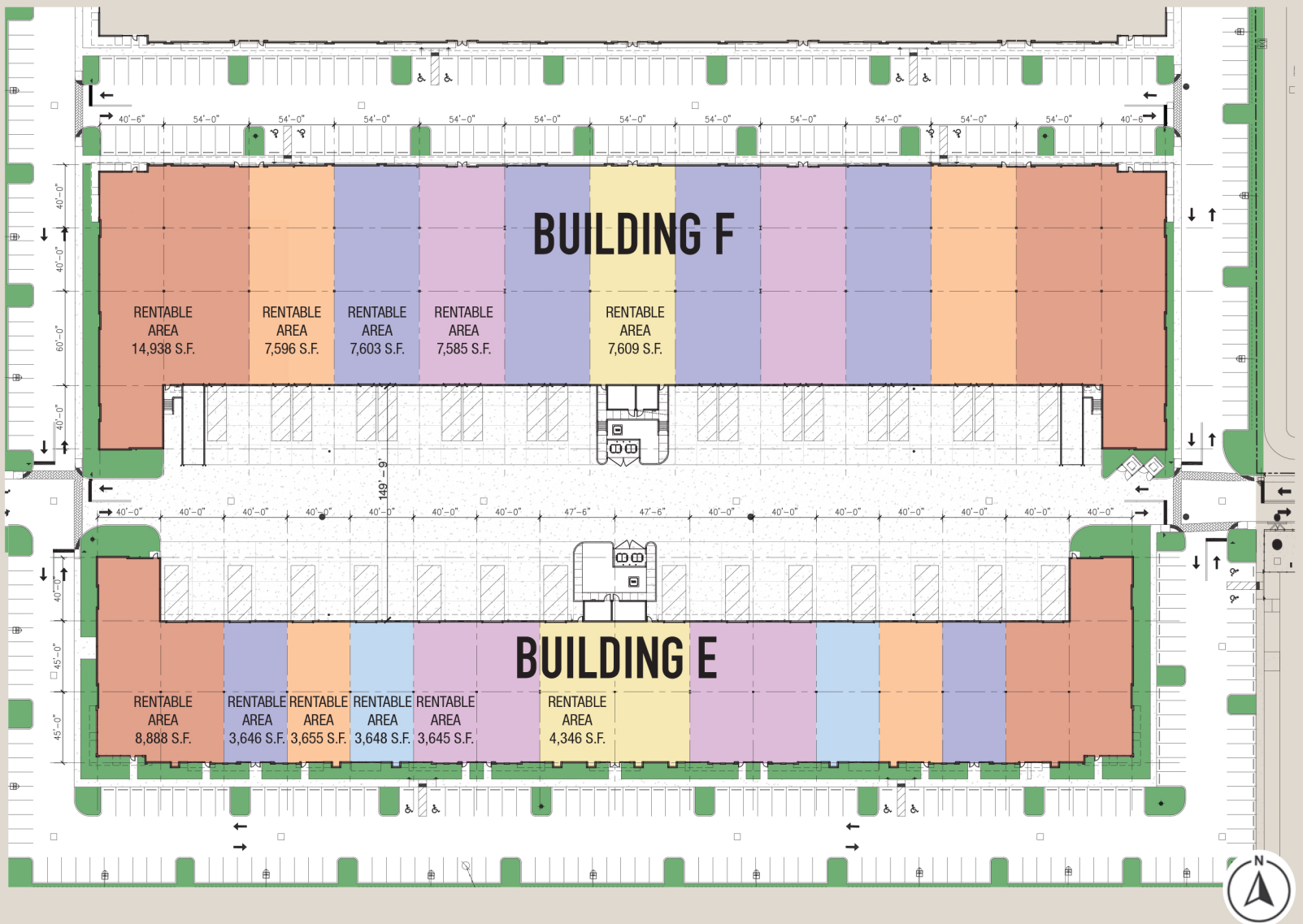
BUILDINGS E & F

8289 BOYNTON BEACH BOULEVARD, BOYNTON BEACH, FLORIDA



PROJECT DEVELOPED BY





BUILDING E SHOWROOM / FLEX

62,942 G.S.F

- Impact Glass and Doors
- 18 Ft. Clear
- Grade Level
- 90 Ft. Depth
- Showroom / Flex User
- R19 Roof Insulation Build-
- To-Suit Office ESFR Fire
- Sprinklers

BUILDING F LIGHT INDUSTRIAL

98,436 G.S.F

- Impact Glass and Doors
- 32 Ft. Clear
- Dock High
- 160 Ft. Depth
- Light Manufacturing / Distribution
- R19 Roof Insulation
- Build-To-Suit Office
- ESFR Fire Sprinklers

LEASING TEAM

Brian Ahearn, CCIM
954.937.4540
BAhearn@butters.com

JC Conte, SIOR
954.336.8001
JCConte@butters.com

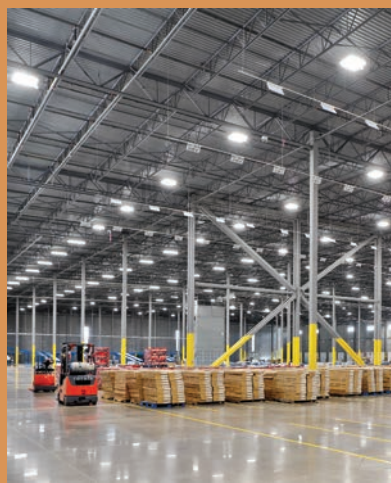
Zach Channing
561.212.8403
zach@channingcorporation.com

Seth Spiegel
561.717.3400
seth@channingcorporation.com



BUILDING A

8289 BOYNTON BEACH BOULEVARD, BOYNTON BEACH, FLORIDA



PROJECT DEVELOPED BY



BUILDING A RECREATIONAL

100,114 G.S.F

- 32 Ft. Clear
- Dock High
- 130 Ft. Depth
- Recreational Users
- Outdoor Space
- Mid Size Tenants
- Sloped Roof System
- Build-To-Suit Office
- ESFR Fire Sprinklers

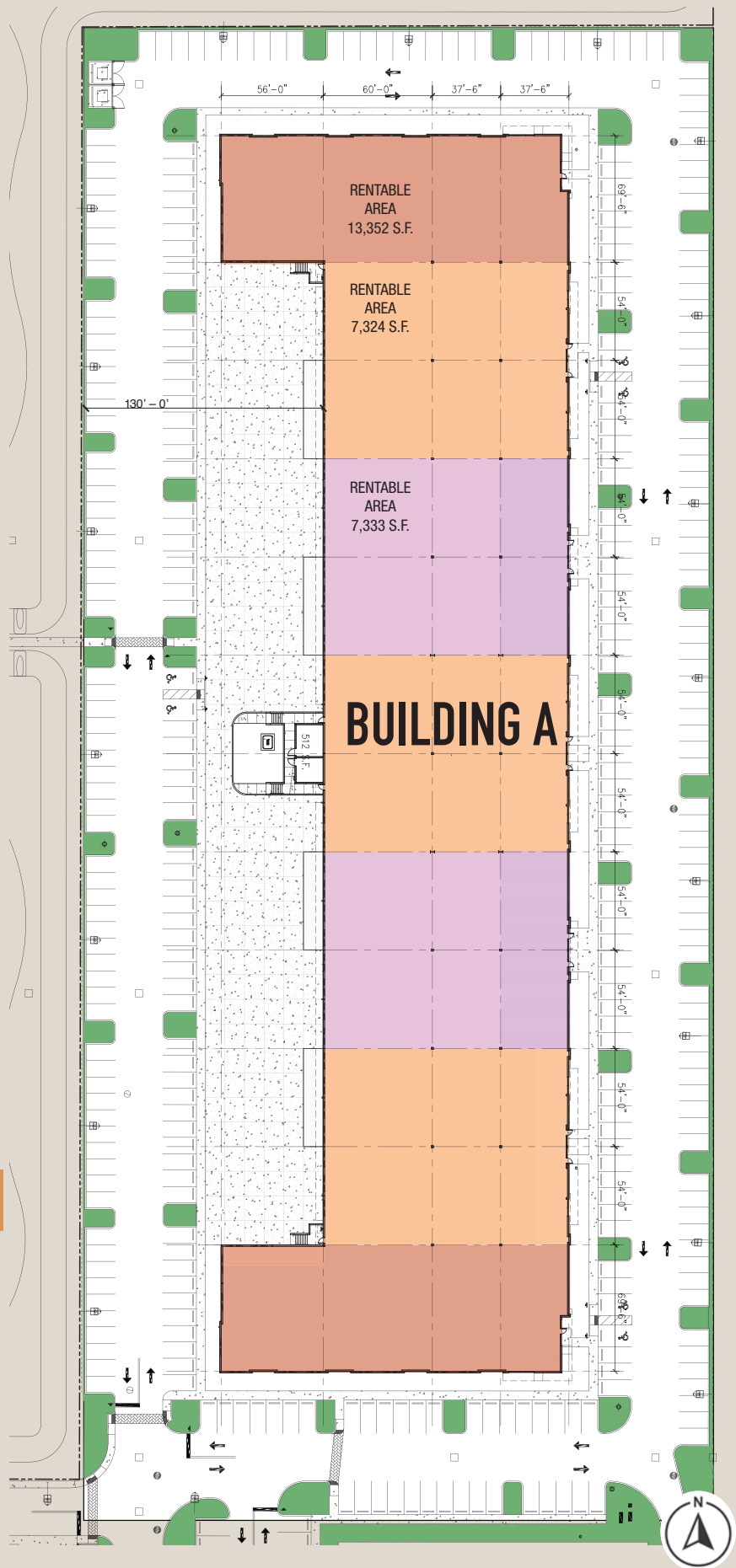
LEASING TEAM

Brian Ahearn, CCIM
954.937.4540
BAhearn@butters.com

Zach Channing
561.212.8403
zach@channingcorporation.com

JC Conte, SIOR
954.336.8001
JCConte@butters.com

Seth Spiegel
561.717.3400
seth@channingcorporation.com





THE DISTRICT

FROM WORK TO PLAY ON THE BOULEVARD

CLICK HERE TO SEE THE DISTRICT COME ALIVE

8289 BOYNTON BEACH BOULEVARD, BOYNTON BEACH, FLORIDA

PROJECT DEVELOPED BY



LEASING TEAM

Brian Ahearn, CCIM
954.937.4540
BAhearn@butters.com

JC Conte, SIOR
954.336.8001
JCConte@butters.com

Zach Channing
561.212.8403
zach@channingcorporation.com

Seth Spiegel
561.717.3400
seth@channingcorporation.com