



OFFICE FOR LEASE 11340 BLONDO STREET, OMAHA NE 68164

PROPERTY DETAILS

Lease Rate	\$12.00-16.00
NNN's	\$6.76
Parking Ratio	Nearly 6:1

Minimum Divisible	1,766 SF
Maximum Contiguous	19,737 SF
Suite 200	9,168 SF
Suite 1	10,569 SF
Suite 3	1,766 SF

DESCRIPTION

Two story all brick office building in a park like setting. Three second floor spaces available The second floor tenants will have access to first class amenities remodeled in 2024 including a break room, wellness room, board room, and soft seating areas. Both spaces on the second floor available can be demised to around 2-6,000 SF, or combined to a maximum contiguous space of 19,737 SF. Monument and potentially building signage available on Blondo Street with 28,000+ cars driving by daily.



DERICK LEWIN
dlewin@pjmorgan.com
402-651-1830



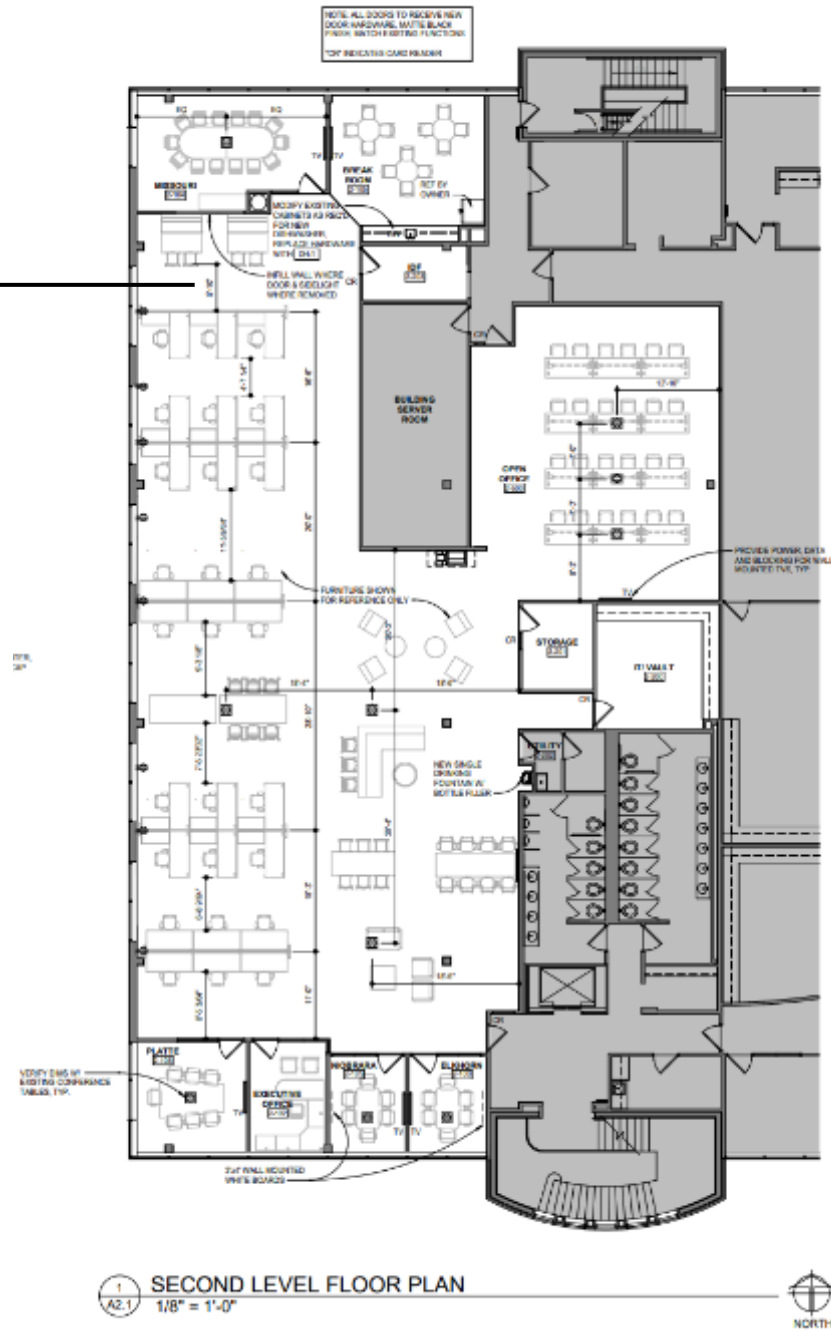
RYAN ELLIS
rellis@pjmorgan.com
402-578-7536



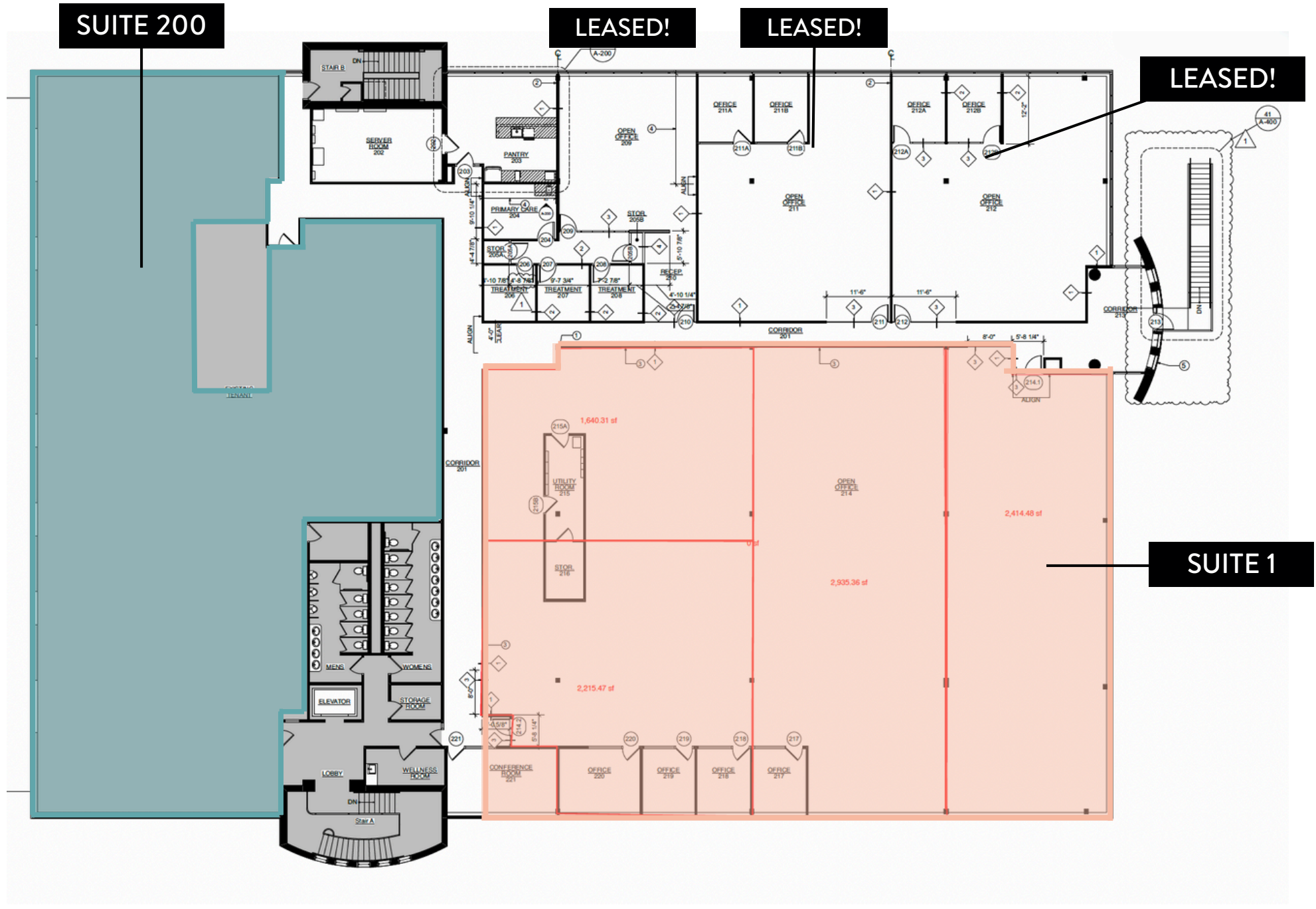
REGI POWELL
rpowell@pjmorgan.com
402-885-9929



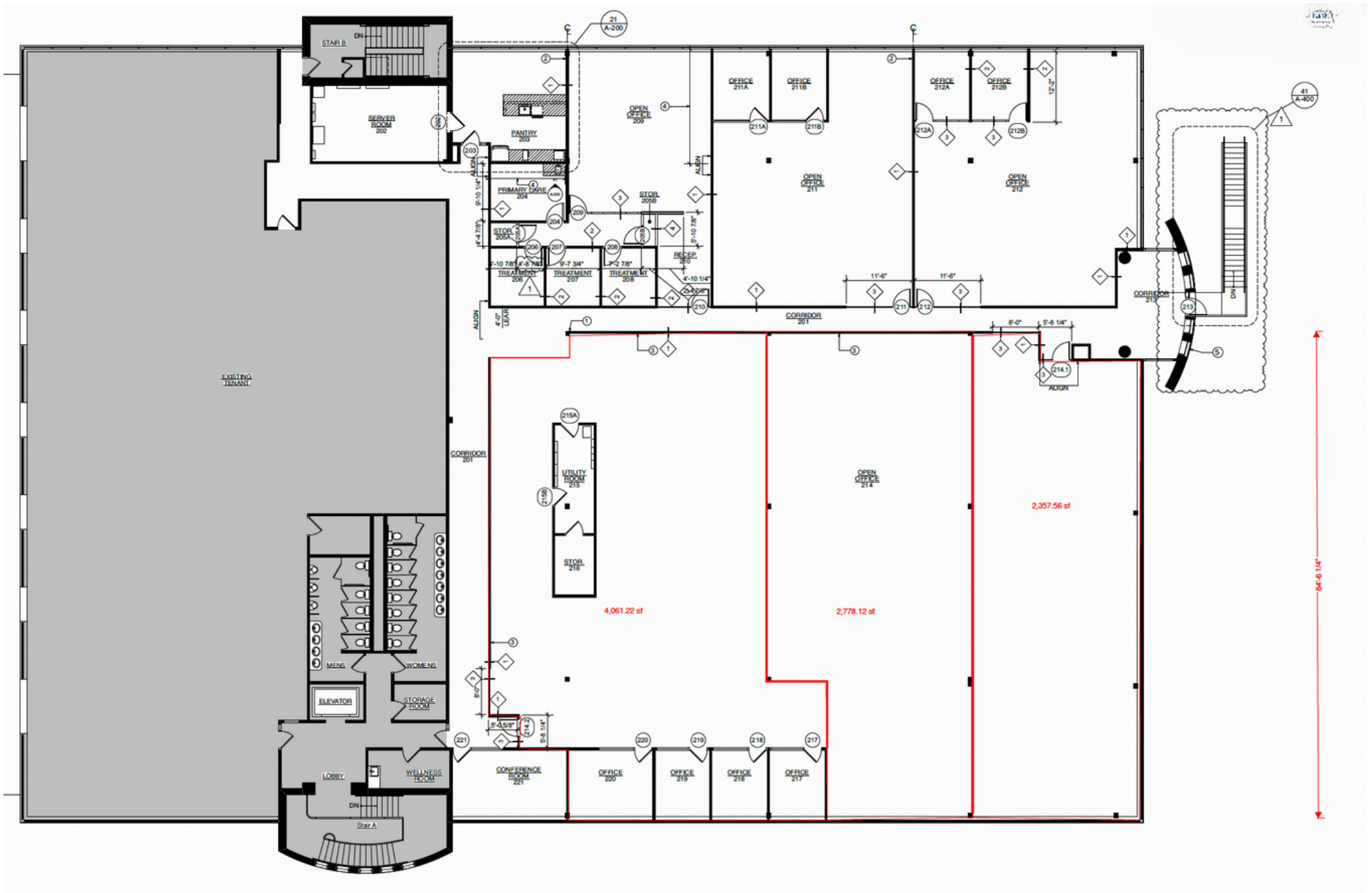
SUITE 200



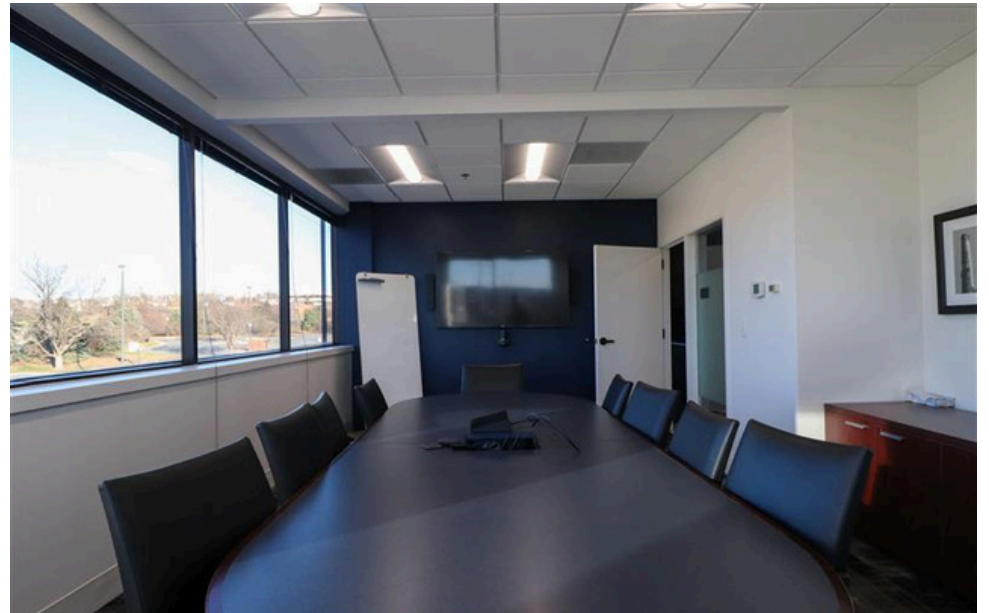
SUITE 200 FLOOR PLAN



SECOND FLOOR PARTITION PLAN



SECOND FLOOR PARTITION PLAN



SUITE 200 PHOTOS

OFFICE FOR LEASE || 11340 BLONDO STREET

PJ MORGAN REAL ESTATE