

NORTHROCK BUSINESS PARK

8201 E 34th St N, Bldg 900, Suite #903, Wichita, Kansas
Office/Warehouse For Lease



PROPERTY FEATURES

- 18 buildings - 300,000 SF
- Lush landscaping
- Adjacent to K-96 Hwy.
- Door-side parking
- On-site property management
- On-site US Mail & UPS drop boxes
- Walking path
- 2 gazebos
- Individual tenant signage
- Landscaped lake area
- Extra storage space (U-Stor Northrock)
- Security patrols at night
- Fiber optics
- More details at northrockbp.com

SUITE #903

- 4,000 SF available
- Reception area
- 3 offices
- Conference Room
- Cubicle area
- Break room
- IT room
- Warehouse with 12' x 12' o/h door
- K-96 Hwy. frontage
- **\$4,863** / month (modified gross)

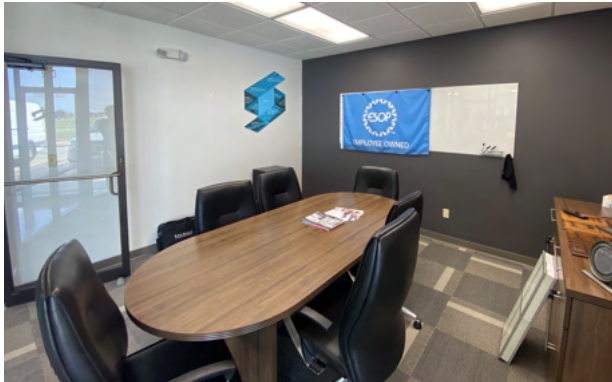


3450 N. Rock Road #201
Wichita, KS 67226
amcwichita.com

NORTHROCK BUSINESS PARK

8201 E 34th St N, Bldg 900, Suite #903, Wichita, Kansas
Office/Warehouse For Lease

INTERIOR PHOTOS

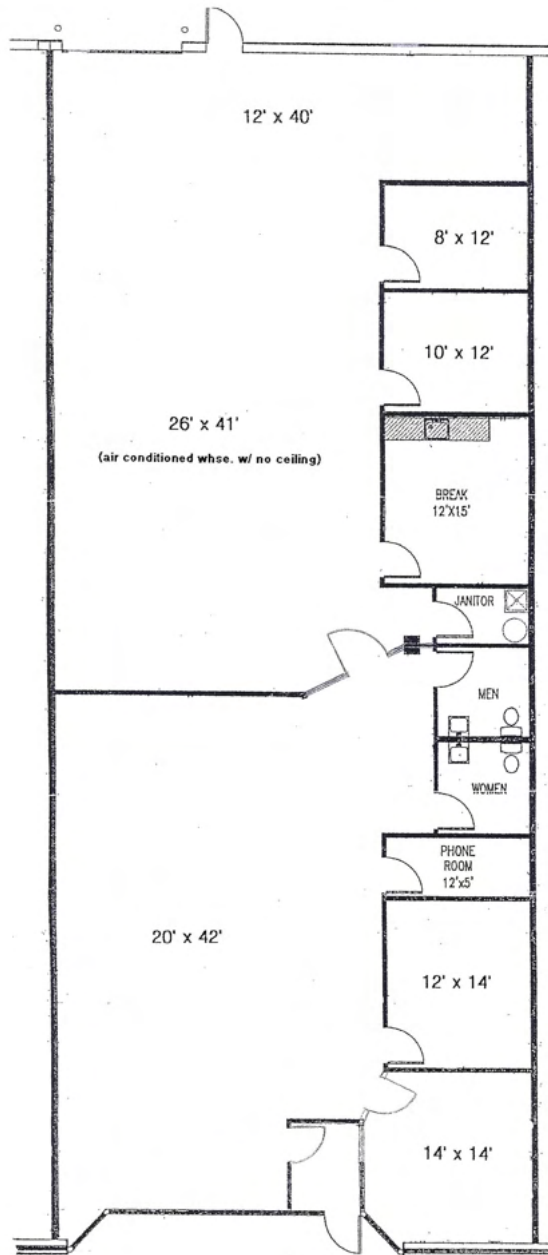


3450 N. Rock Road #201
Wichita, KS 67226
amcwichita.com

FOR INFORMATION
Contact Ross Way
(316) 681-1711
ross@amcwichita.com

NORTHROCK BUSINESS PARK
8201 E 34th St N, Bldg 900, Suite #903, Wichita, Kansas
Office/Warehouse For Lease

FLOOR PLAN



3450 N. Rock Road #201
Wichita, KS 67226
amcwichita.com

FOR INFORMATION
Contact Ross Way
(316) 681-1711
ross@amcwichita.com

NORTHROCK BUSINESS PARK

8201 E 34th St N, Bldg 900, Suite #903, Wichita, Kansas
Office/Warehouse For Lease

NORTHROCK BUSINESS PARK SITE PLAN



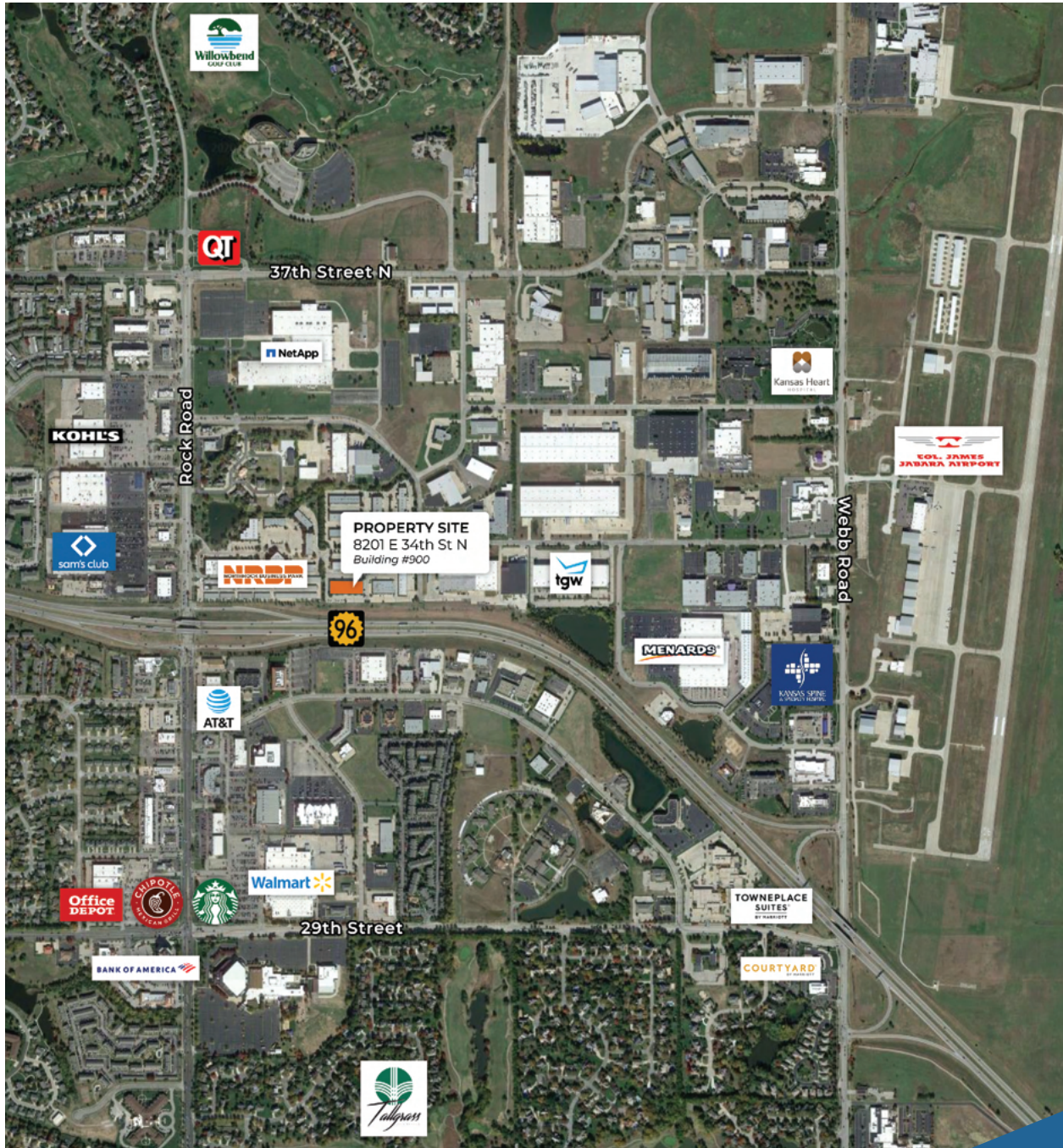
3450 N. Rock Road #201
Wichita, KS 67226
amcwichita.com

FOR INFORMATION
Contact Ross Way
(316) 681-1711
ross@amcwichita.com

NORTHROCK BUSINESS PARK

8201 E 34th St N, Bldg 900, Suite #903, Wichita, Kansas
Office/Warehouse For Lease

LOCATION/AERIAL



3450 N. Rock Road #201
Wichita, KS 67226
amcwichita.com

FOR INFORMATION
Contact Ross Way
(316) 681-1711
ross@amcwichita.com