

FOR LEASE

ATLANTIC

Commercial Group, Inc.®

Licensed Real Estate Brokers

701 SE 6TH AVE DELRAY BEACH, FL 33483

ATLANTICCG.COM

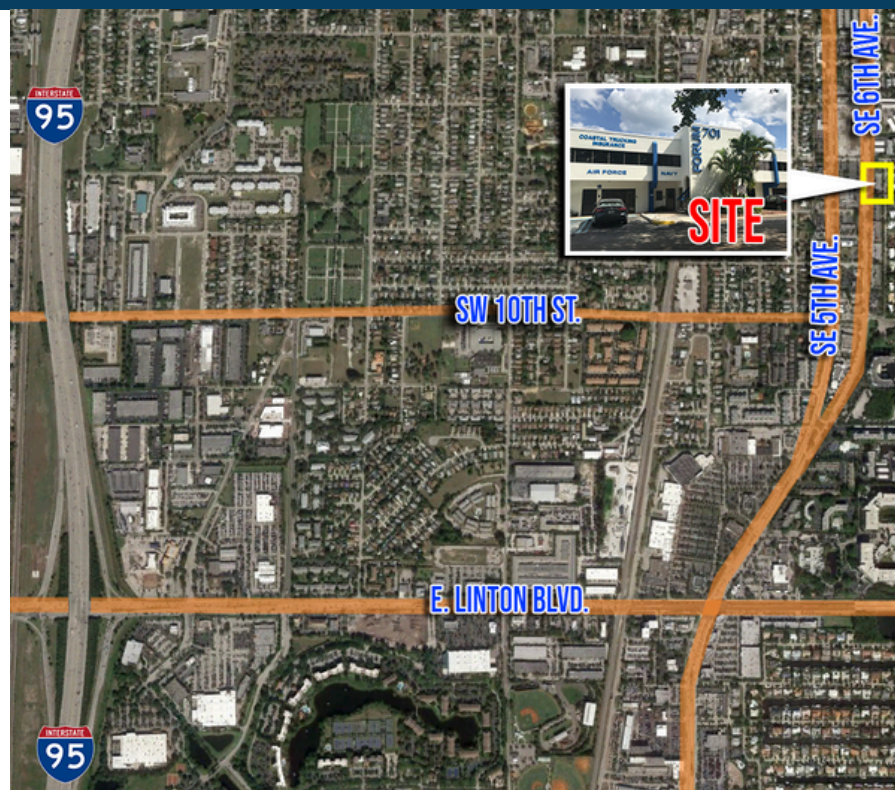


1,500 SF @ \$20 PSF NNN + \$16.81 PSF + ELECTRIC (JANITORIAL INCLUDED)

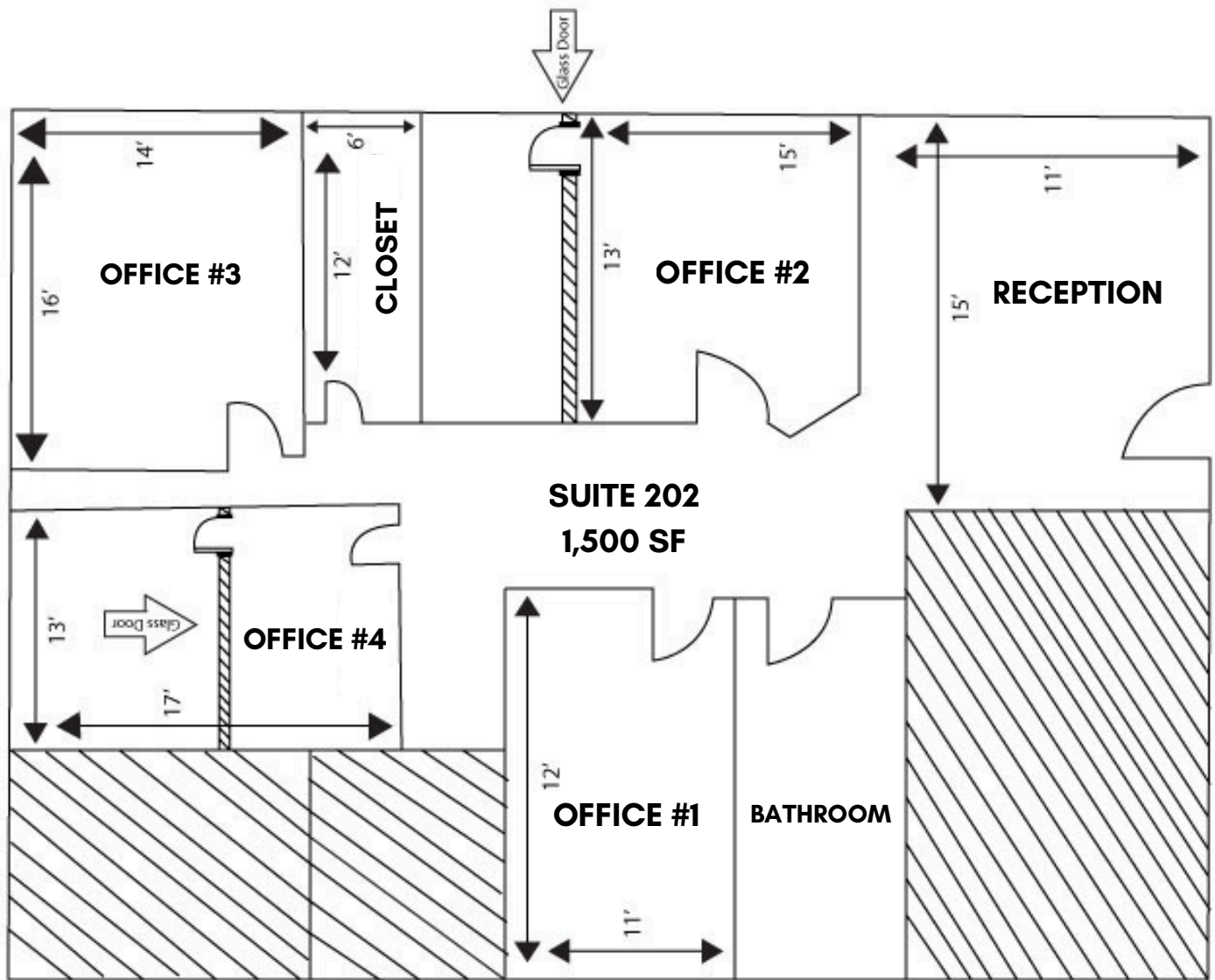
THIS CLASS B OFFICE BUILDING CONTAINS 2 STORIES AND APPROXIMATELY 13,000 SQUARE FEET OF OFFICE SPACE. THERE ARE CURRENTLY TWO 1,500 SF OFFICE SPACES AVAILABLE FOR LEASE ON THE GROUND FLOOR & 2ND FLOOR.

THESE OFFICE SPACES ARE PERFECT FOR ANY GROUP OF PROFESSIONALS OR FOR A CORPORATE OFFICE.

LOCATED ONLY 6 BLOCKS SOUTH OF DOWNTOWN ATLANTIC AVENUE, THIS LOCATION OFFERS NUMEROUS FOOD, DRINK AND SHOPPING LOCATIONS WITHIN MINUTES OF THIS PROPERTY. LOCALLY OWNED AND MANAGED SINCE 1983.



GARY BROIDIS | (561) 703-9298 | GARY@ATLANTICCG.COM



SUITE 102 FLOOR PLAN COMING SOON

HIGHLIGHTS

- EXTREMELY ATTRACTIVE LEASE TERMS
- LOWEST RATE IN DOWNTOWN DELRAY BEACH
- HIGHLY VISIBLE TO FEDERAL HIGHWAY
- AMPLE PARKING FOR ALL TENANTS

