

# Office/Warehouse/Retail Space for Lease

755 HIGHWAY 105, PALMER LAKE, CO 80133



Watch Drone Footage

## Overview

Hoff & Leigh is excited to present a desirable mixed-use building in Palmer Lake on Highway 105. The West End Center has multiple retail / office / industrial tenants and is a convenient 3 minutes to I-25. The tenant mix is suitable to help any retail, office or industrial business thrive. Come join this lively center in the growing market of Palmer Lake!

**Warehouse 6-7:** This space consists of a warehouse area, one reception/office room, a storage room and an in suite restroom.

For more information or to set up a private tour, please text/call Jayme Wilson: (719) 722-8632 or Guy Cox: (719) 357-7494 today!

Suite #:	Size:	Lease Rate:
WH 6-7	1,000 SF	\$1,200 / Month + \$150 Utilities

## Highlights

- Ample Parking
- Elevator Access
- Minutes to I-25
- Great Tenant Mix
- Motivated Landlord

## Property Details



**Lease Rate**  
\$1,200 / Month



**Space Available**  
1,000 SF



**Zoning**  
C2



**Building Size**  
23,189 SF

Rev: November 5, 2024



### Our Network Is Your Edge

All information is from sources deemed reliable and is subject to errors, omissions, change of price, rental, prior sale, and withdrawal without notice. Prospect should carefully verify each item of information contained herein.

### Jayme Wilson

C: 719.722.8632  
O: 719.630.2277  
JWilson@HoffLeigh.com

### Guy Cox

C: 719.357.7494  
O: 719.630.2277  
GCox@HoffLeigh.com



# Office/Warehouse/Retail Space for Lease

755 HIGHWAY 105, PALMER LAKE, CO 80133



Rev: November 5, 2024



## Our Network Is Your Edge

All information is from sources deemed reliable and is subject to errors, omissions, change of price, rental, prior sale, and withdrawal without notice. Prospect should carefully verify each item of information contained herein.

**Jayme Wilson**

C: 719.722.8632

O: 719.630.2277

[JWilson@HoffLeigh.com](mailto:JWilson@HoffLeigh.com)

**Guy Cox**

C: 719.357.7494

O: 719.630.2277

[GCox@HoffLeigh.com](mailto:GCox@HoffLeigh.com)

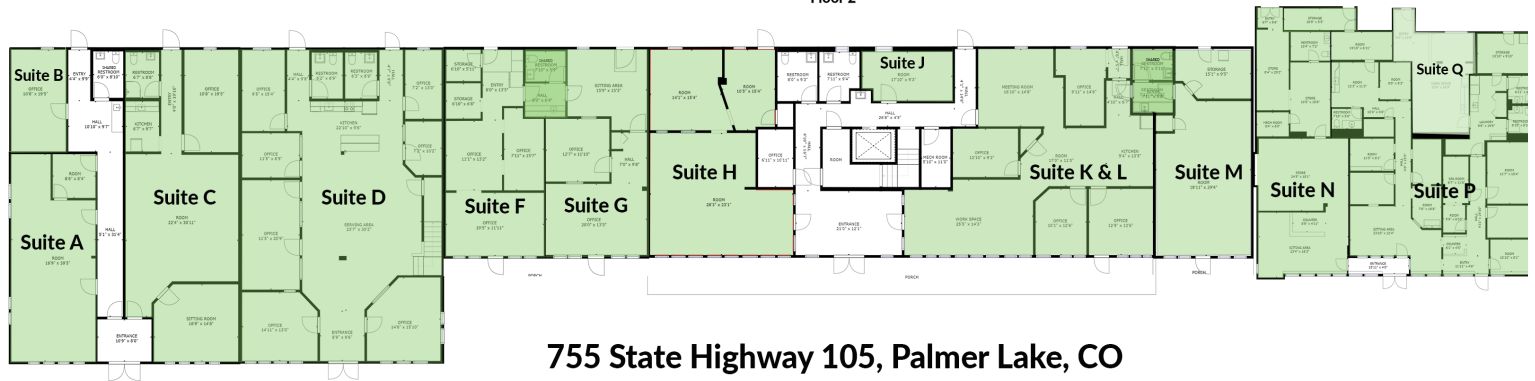
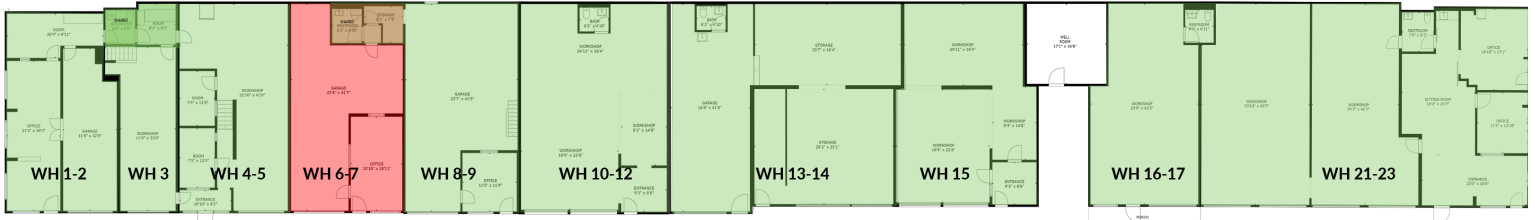


# Office/Warehouse/Retail Space for Lease

755 HIGHWAY 105, PALMER LAKE, CO 80133



Available for Lease  
Leased



755 State Highway 105, Palmer Lake, CO

Rev: November 5, 2024



### Our Network Is Your Edge

All information is from sources deemed reliable and is subject to errors, omissions, change of price, rental, prior sale, and withdrawal without notice. Prospect should carefully verify each item of information contained herein.

Jayme Wilson

C: 719.722.8632

O: 719.630.2277

JWilson@HoffLeigh.com

Guy Cox

C: 719.357.7494

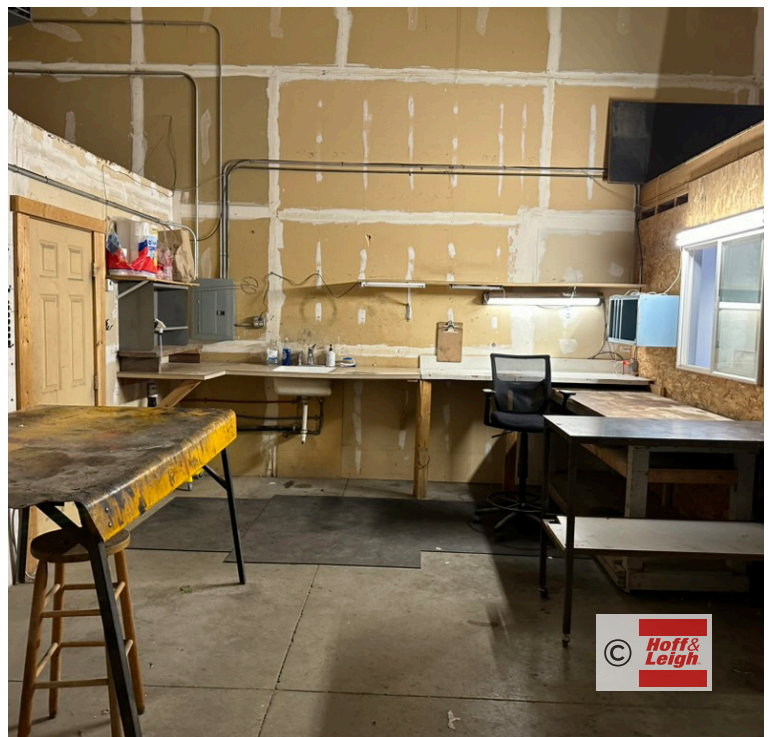
O: 719.630.2277

GCox@HoffLeigh.com

# Office/Warehouse/Retail Space for Lease

755 HIGHWAY 105, PALMER LAKE, CO 80133

Warehouse 6-7

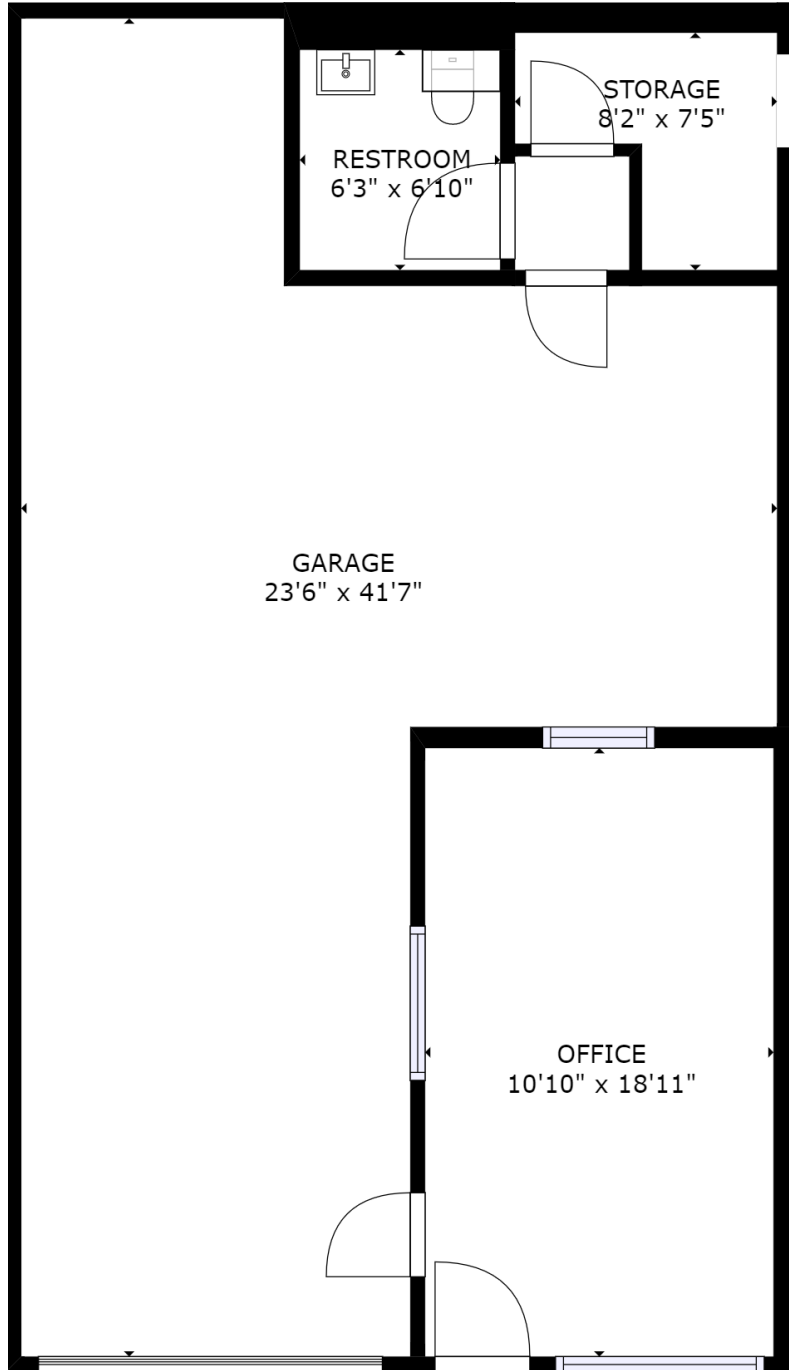


Rev: November 5, 2024

# Office/Warehouse/Retail Space for Lease

755 HIGHWAY 105, PALMER LAKE, CO 80133

## Warehouse 6-7



Rev: November 5, 2024

### Our Network Is Your Edge



All information is from sources deemed reliable and is subject to errors, omissions, change of price, rental, prior sale, and withdrawal without notice. Prospect should carefully verify each item of information contained herein.

### Jayme Wilson

C: 719.722.8632

O: 719.630.2277

JWilson@HoffLeigh.com

### Guy Cox

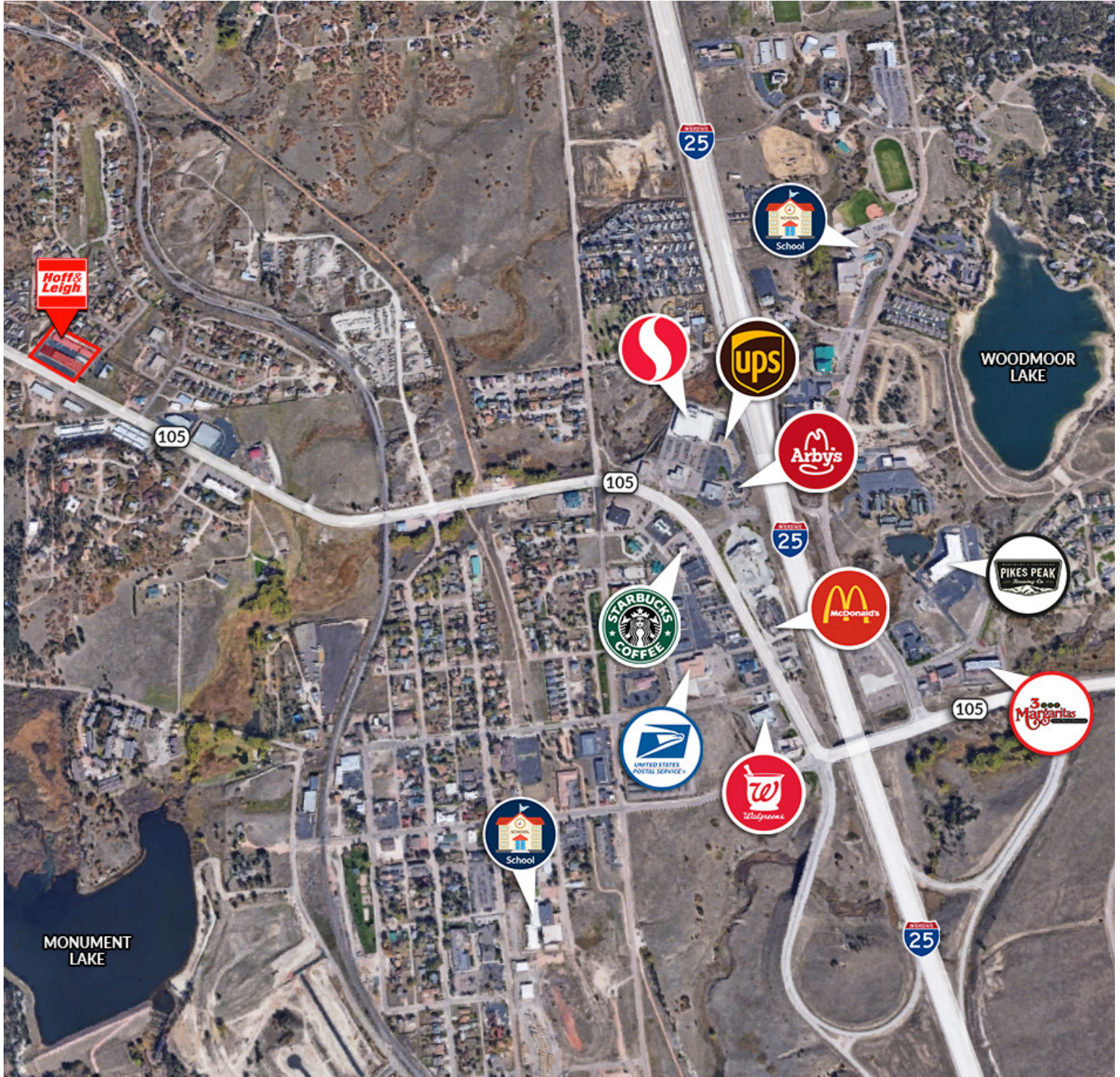
C: 719.357.7494

O: 719.630.2277

GCox@HoffLeigh.com

# Office/Warehouse/Retail Space for Lease

755 HIGHWAY 105, PALMER LAKE, CO 80133



Rev: November 5, 2024

### Our Network Is Your Edge

All information is from sources deemed reliable and is subject to errors, omissions, change of price, rental, prior sale, and withdrawal without notice. Prospect should carefully verify each item of information contained herein.

**Jayme Wilson**

C: 719.722.8632

O: 719.630.2277

[JWilson@HoffLeigh.com](mailto:JWilson@HoffLeigh.com)

**Guy Cox**

C: 719.357.7494

O: 719.630.2277

[GCox@HoffLeigh.com](mailto:GCox@HoffLeigh.com)