

19340 94 AVENUE • SURREY

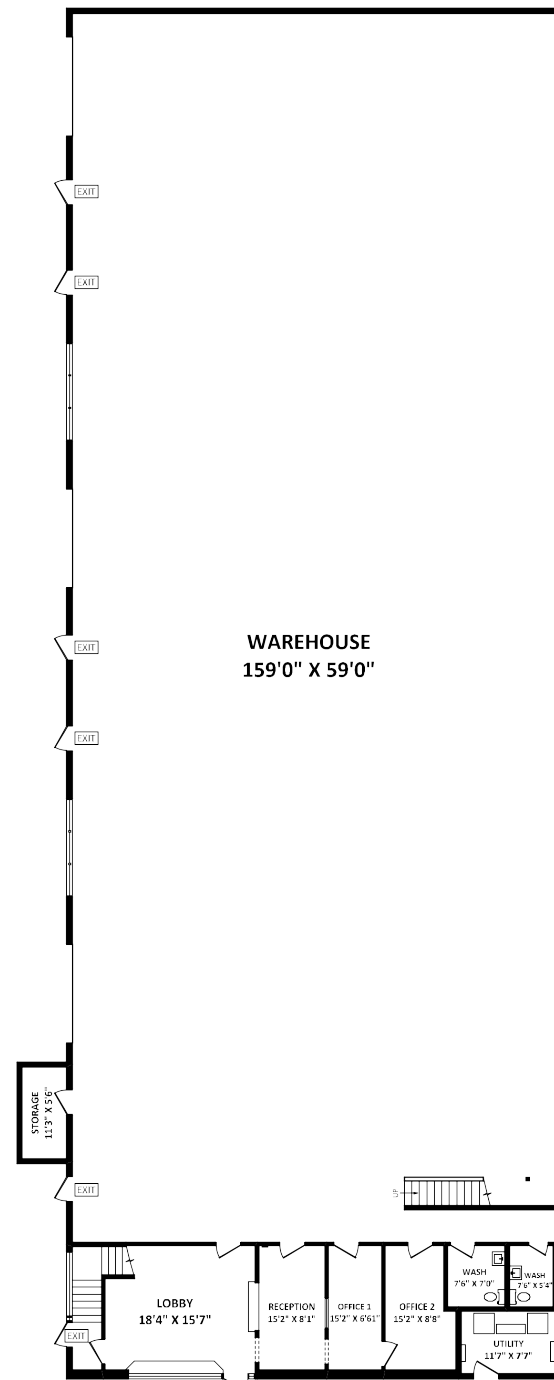
Welcome to...

ENDURA PAINT MFG  
INDUSTRIAL • MARINE • AVIATION  
New Location!

19340



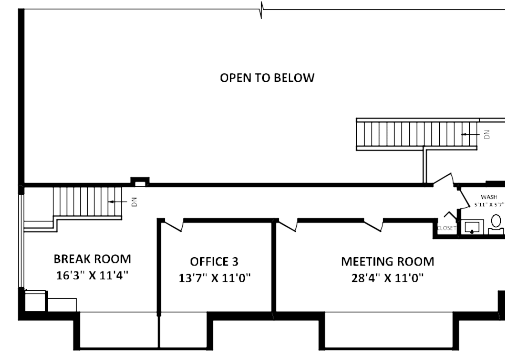
19340 94 AVENUE • SURREY



WAREHOUSE  
159'0" X 59'0"

GROSS LEASABLE AREA: 11,177 SQ.FT.

MAIN FLOOR: 10,171 SQ.FT.  
UPPER FLOOR: 1,006 SQ.FT.



UPPER FLOOR: 1,006 SQ.FT.

MAIN FLOOR: 10,171 SQ.FT.



Executive  
group

VANCOUVER ISLAND

RE/MAX  
CAMOSUN

Curtis Singh  
250-896-9212

curtis@curtissingh.com  
www.executivegroup.ca

RE/MAX Camosun Oak Bay  
2239 Oak Bay Avenue, Victoria British Columbia V8R 1G4  
Tel. 250-370-7788

Please contact Curtis Singh, 250-896-9212, for specifications.

This communication is not intended to cause or induce breach of an existing agency agreement.





0



2

### Details

Style: Freestanding Warehouse  
 Type: Zoned Light Impact Industrial  
 Year built: 1981  
 Size: 11,177 sq.ft.  
 Lot: 0.459 Acres  
 Taxes (2023): \$41,981

### Description

Located on 94th Avenue in the highly desirable industrial market of Port Kells, this is a rare opportunity to purchase an 11,177 square foot free standing building on 0.459 acres. Situated one block north of Highway #1, this location provides convenient access to municipalities throughout the lower mainland.

