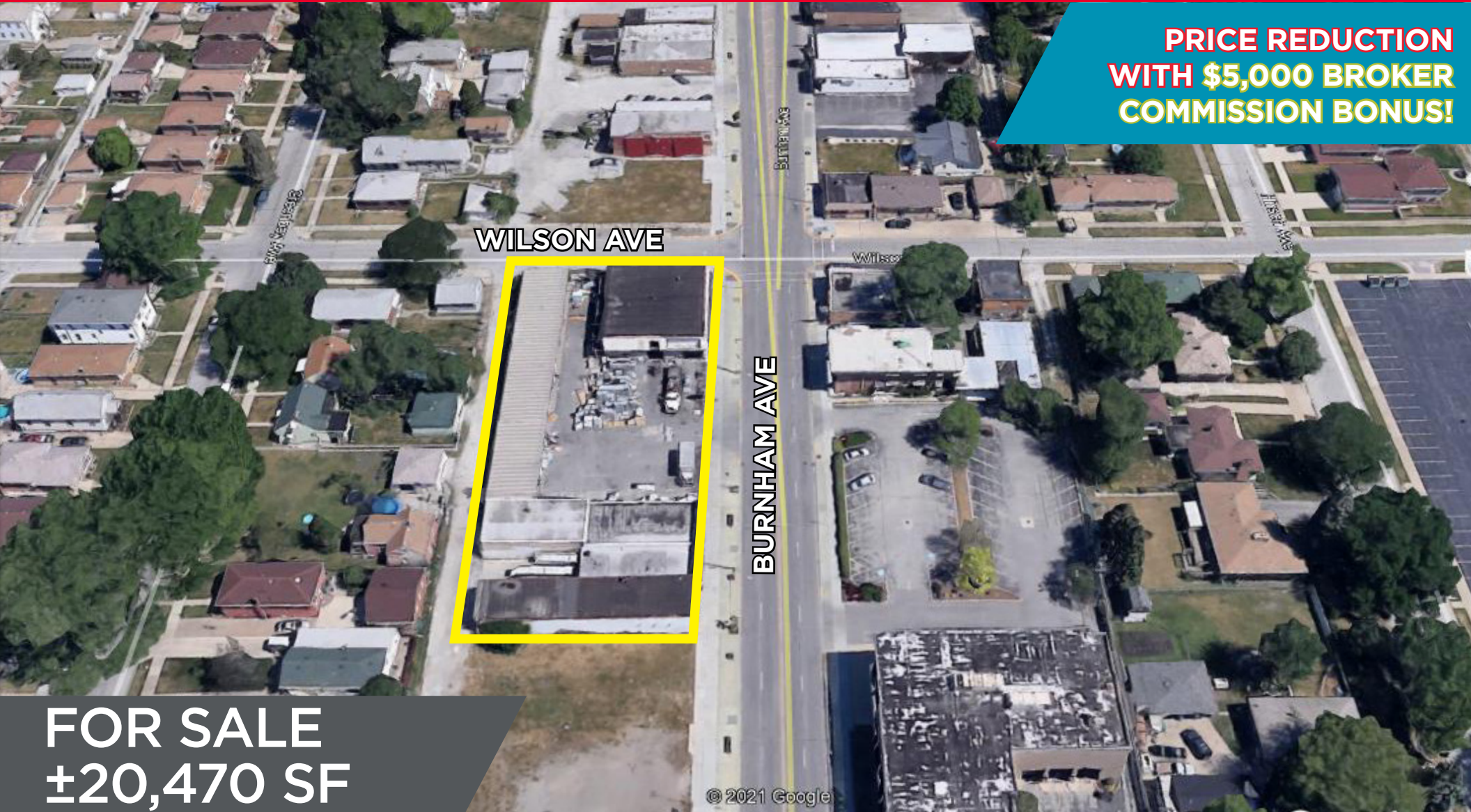


540 S Burnham Ave Calumet City, IL



**PRICE REDUCTION
WITH \$5,000 BROKER
COMMISSION BONUS!**



FOR SALE
±20,470 SF

SALLY MACOICZ
Managing Director

+1 312 470 1823
sally.macoicz@cushwake.com

MATT SADDLER
Senior Associate

+1 312 470 3834
matt.saddler@cushwake.com

KEITH PURITZ
Executive Director

+1 847 720 1366
keith.puritz@cushwake.com



PROPERTY HIGHLIGHTS

Building Size: 20,470 SF (3 building footprint)

Total Site Size: .74 Acres

Office Space: ±10,000 SF

Year Built: 1971

Clear Height: 8' & 12'

Loading: 6 drive-in-doors

Parking: 8 cars (expandable)

Asking Sale Price: \$275,000 (\$13.43 PSF)
PRICE REDUCTION (~~\$390,000~~)

**540 S. BURNHAM AVE
CALUMET CITY, IL**



SALLY MACOICZ
Managing Director

+1 312 470 1823
sally.macoicz@cushwake.com

MATT SADDLER
Senior Associate

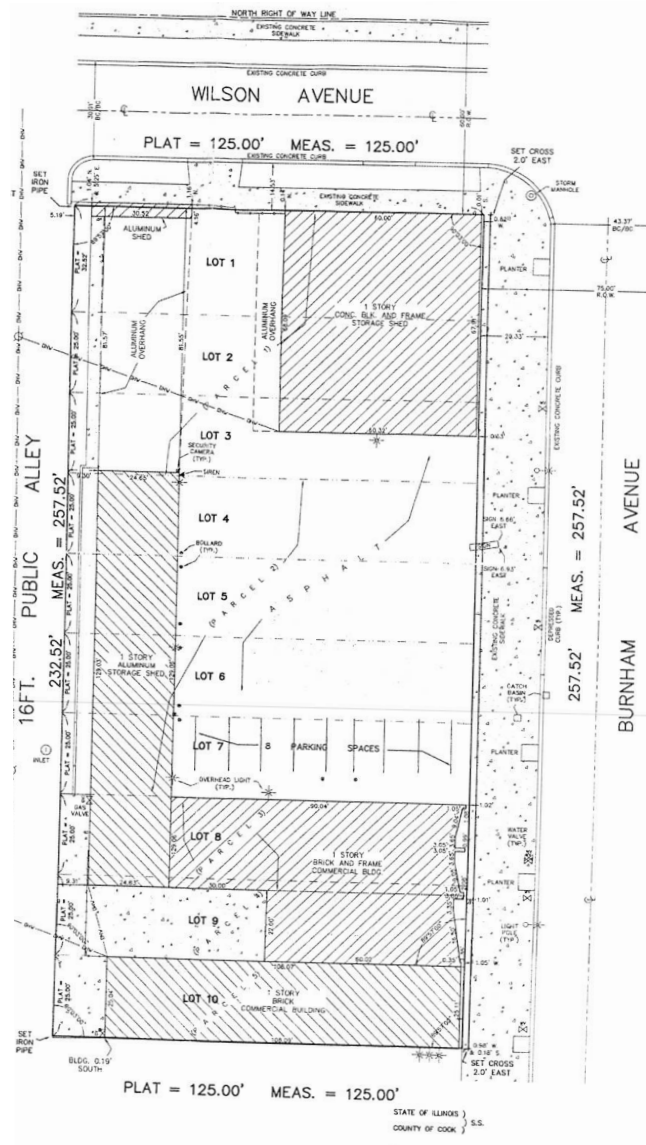
+1 312 470 3834
matt.saddler@cushwake.com

KEITH PURITZ
Executive Director

+1 847 720 1366
keith.puritz@cushwake.com

 **CUSHMAN &
WAKEFIELD**

SURVEY



540 S. BURNHAM AVE
CALUMET CITY, IL

©2021 Cushman & Wakefield. All rights reserved. The information contained in this communication is strictly confidential. This information has been obtained from sources believed to be reliable but has not been verified. NO WARRANTY OR REPRESENTATION, EXPRESS OR IMPLIED, IS MADE AS TO THE CONDITION OF THE PROPERTY (OR PROPERTIES) REFERENCED HEREIN OR AS TO THE ACCURACY OR COMPLETENESS OF THE INFORMATION CONTAINED HEREIN, AND SAME IS SUBMITTED SUBJECT TO ERRORS, OMISSIONS, CHANGE OF PRICE, RENTAL OR OTHER CONDITIONS, WITHDRAWAL WITHOUT NOTICE, AND TO ANY SPECIAL LISTING CONDITIONS IMPOSED BY THE PROPERTY OWNER(S). ANY PROJECTIONS, OPINIONS OR ESTIMATES ARE SUBJECT TO UNCERTAINTY AND DO NOT SIGNIFY CURRENT OR FUTURE PROPERTY PERFORMANCE.

SALLY MACOICZ
Managing Director

+1 312 470 1823
sally.macoicz@cushwake.com

MATT SADDLER
Senior Associate

+1 312 470 3834
matt.saddler@cushwake.com

KEITH PURITZ
Executive Director

+1 847 720 1366
keith.puritz@cushwake.com



PHOTOS



**540 S. BURNHAM AVE
CALUMET CITY, IL**

©2021 Cushman & Wakefield. All rights reserved. The information contained in this communication is strictly confidential. This information has been obtained from sources believed to be reliable but has not been verified. NO WARRANTY OR REPRESENTATION, EXPRESS OR IMPLIED, IS MADE AS TO THE CONDITION OF THE PROPERTY (OR PROPERTIES) REFERENCED HEREIN OR AS TO THE ACCURACY OR COMPLETENESS OF THE INFORMATION CONTAINED HEREIN, AND SAME IS SUBMITTED SUBJECT TO ERRORS, OMISSIONS, CHANGE OF PRICE, RENTAL OR OTHER CONDITIONS, WITHDRAWAL WITHOUT NOTICE, AND TO ANY SPECIAL LISTING CONDITIONS IMPOSED BY THE PROPERTY OWNER(S). ANY PROJECTIONS, OPINIONS OR ESTIMATES ARE SUBJECT TO UNCERTAINTY AND DO NOT SIGNIFY CURRENT OR FUTURE PROPERTY PERFORMANCE.

SALLY MACOICZ
Managing Director

+1 312 470 1823
sally.macoicz@cushwake.com

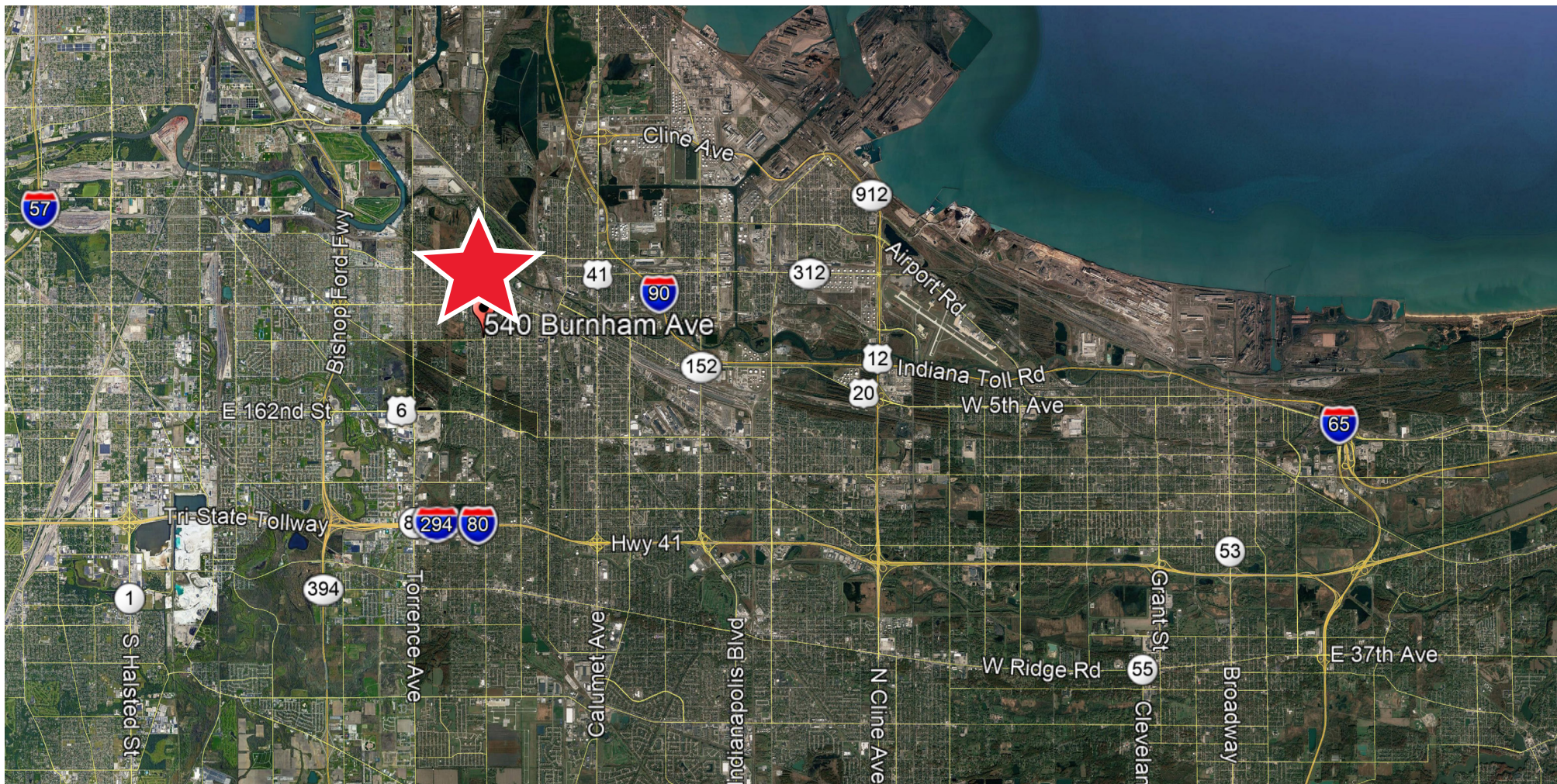
MATT SADDLER
Senior Associate

+1 312 470 3834
matt.saddler@cushwake.com

KEITH PURITZ
Executive Director

+1 847 720 1366
keith.puritz@cushwake.com





©2021 Cushman & Wakefield. All rights reserved. The information contained in this communication is strictly confidential. This information has been obtained from sources believed to be reliable but has not been verified. NO WARRANTY OR REPRESENTATION, EXPRESS OR IMPLIED, IS MADE AS TO THE CONDITION OF THE PROPERTY (OR PROPERTIES) REFERENCED HEREIN OR AS TO THE ACCURACY OR COMPLETENESS OF THE INFORMATION CONTAINED HEREIN, AND SAME IS SUBMITTED SUBJECT TO ERRORS, OMISSIONS, CHANGE OF PRICE, RENTAL OR OTHER CONDITIONS, WITHDRAWAL WITHOUT NOTICE, AND TO ANY SPECIAL LISTING CONDITIONS IMPOSED BY THE PROPERTY OWNER(S). ANY PROJECTIONS, OPINIONS OR ESTIMATES ARE SUBJECT TO UNCERTAINTY AND DO NOT SIGNIFY CURRENT OR FUTURE PROPERTY PERFORMANCE.

