

FOR LEASE | Industrial Shop & Office Space in Newly Rejuvenated Ironwood Business Park

2,100
SQUARE FEET | **\$1.43** /mo
RENT / SF
\$2,997.75
RENT

(970) 594-9949
www.epmprops.com



PROPERTY ADDRESS

300 E 16th St
Unit 214
Greeley, CO 80631

LEASE TYPE: NNN AVAILABLE: Now

DESCRIPTION

Ironwood Business Park
300 E. 16th Street | Greeley, CO 80631

Modern Improvements. Competitive Rates. Professional Business Space.

Now is an excellent opportunity to secure space in one of Greeley's revitalized business parks while lease rates remain highly competitive.

Located within the newly revitalized Ironwood Business Park, this 2,100 SF industrial suite combines office, storage, and warehouse functionality in a professional business setting. Recent property-wide improvements include modern exterior finishes, refreshed storefronts, upgraded lighting, enhanced landscaping, and ongoing investments designed to improve the tenant experience.

This functional layout is ideal for contractors, service providers, light industrial users, warehouse operations, and growing businesses seeking a professional location with operational flexibility.

Suite Features

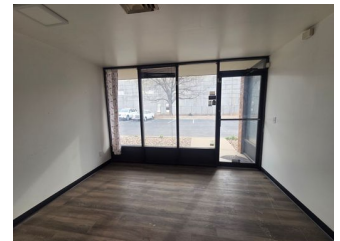
2,100 SF Flex Industrial Space
Front Office Area for administration or customer reception
Large Dedicated Storage Room
Open Rear Shop/Warehouse Layout
12' x 12' Overhead Door
14' Clear Ceiling Height
Forced Air Heat & A/C in Office Area

AMENITIES

• Off Street Parking

RENTAL TERMS

Rent	\$2,997.75
Security Deposit	\$2,900.00
Application Fee	\$50.00



View this listing online:

