

28188-28196 SCHOOLCRAFT
UNIT #28190
LIVONIA, MICHIGAN

HI-TECH/RETAIL FOR LEASE
3,939 Square Feet Available



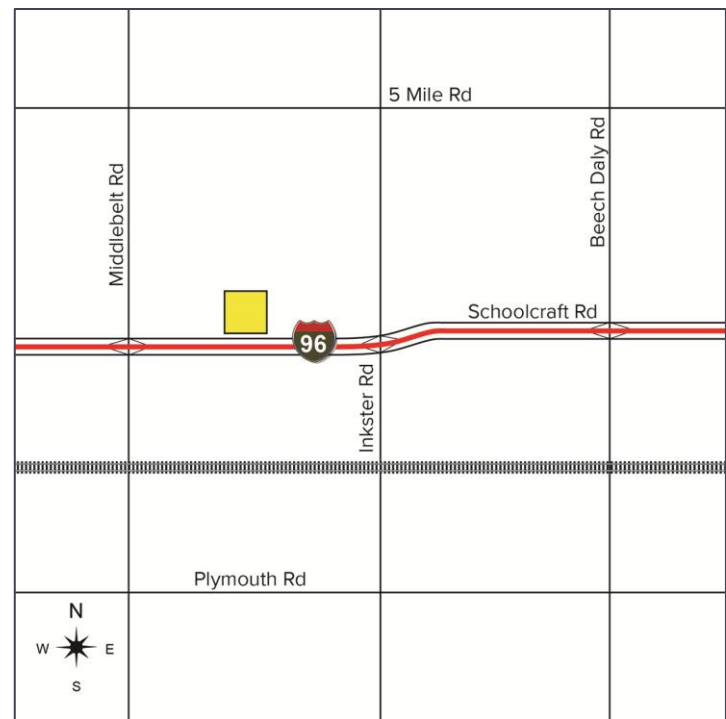
**SIGNATURE
ASSOCIATES**
KNOW SIGNATURE | KNOW RESULTS

I-96 EXPOSURE



PROPERTY FEATURES

- 3,939 square feet available
- 2,855 square foot office / showroom
- 20' clear height
- (1) truckwell
- Zoned commercial
- 86 car parking total complex
- Great unit with exposure to I-96 & the service drive
- Perfect for showroom, sales, service & warehouse
- Lease Rate: \$12.00/sq. ft. NNN



For more information, please contact:

GARY SALLEN
(248) 948 0105

gsallen@signatureassociates.com

STEVE GORDON
(248) 948 0101

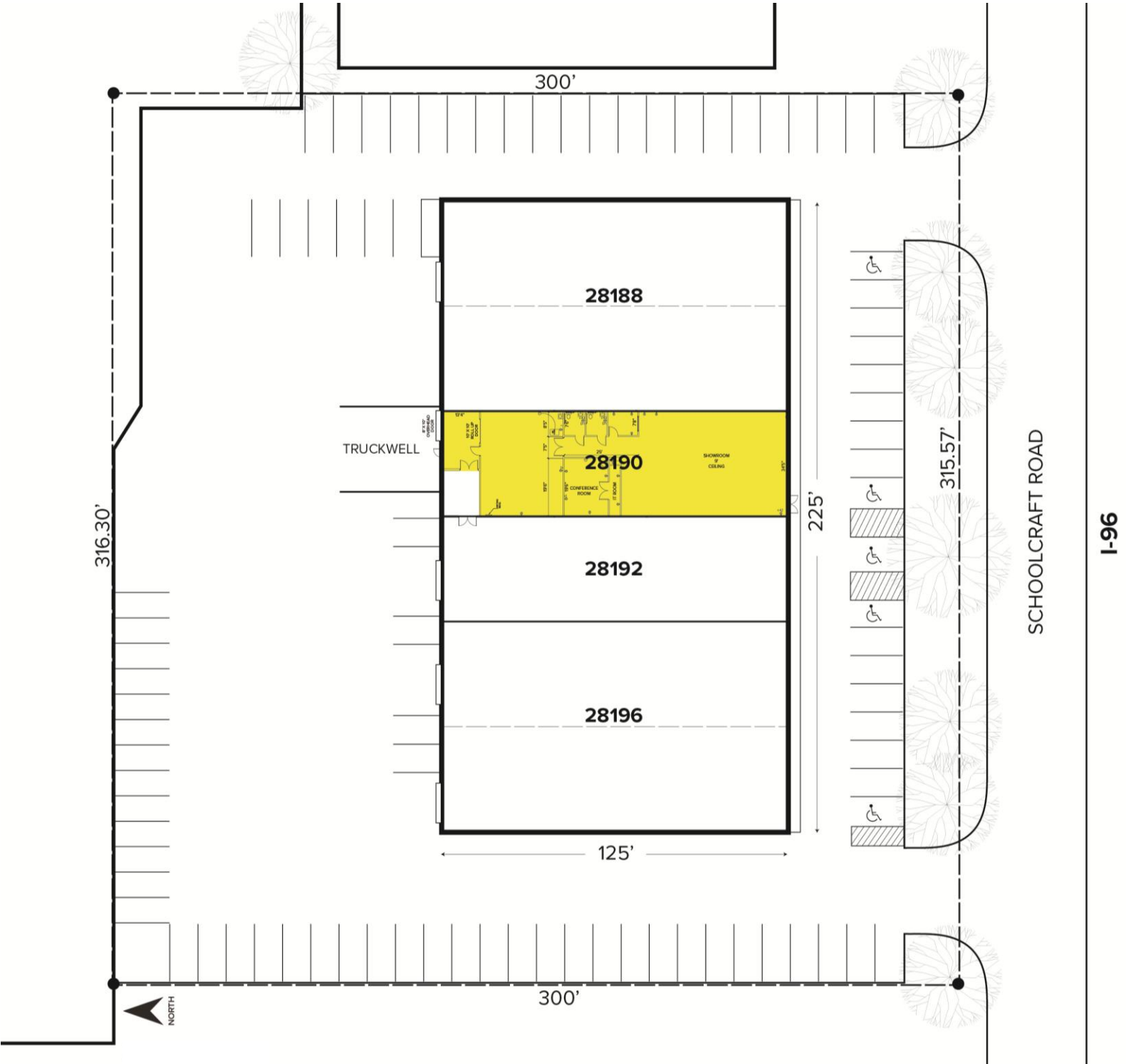
sgordon@signatureassociates.com

SIGNATURE ASSOCIATES
One Towne Square, Suite 1200
Southfield, MI 48076
www.signatureassociates.com

28188-28196 Schoolcraft, Unit #28190- Livonia, Michigan
Hi-Tech/Retail For Lease

3,939
Square Feet
AVAILABLE

Site Plan



For more information, please contact:

GARY SALLEN
(248) 948 0105
gsallen@signatureassociates.com

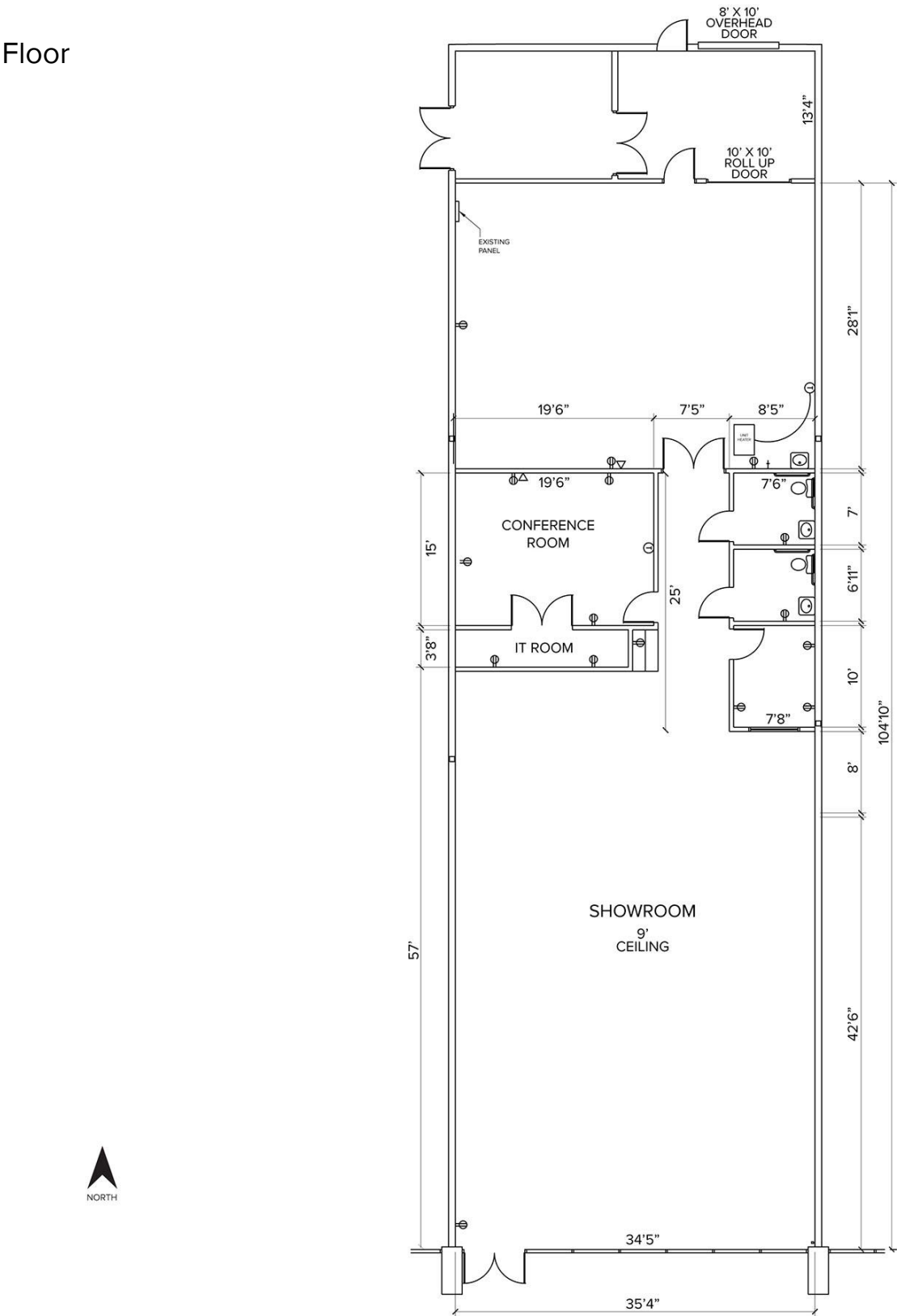
STEVE GORDON
(248) 948 0101
sgordon@signatureassociates.com

SIGNATURE ASSOCIATES
One Towne Square, Suite 1200
Southfield, MI 48076
www.signatureassociates.com

28188-28196 Schoolcraft, Unit #28190- Livonia, Michigan
Hi-Tech/Retail For Lease

3,939
Square Feet
AVAILABLE

Floor



For more information, please contact:

GARY SALLEN
(248) 948 0105
gsallen@signatureassociates.com

STEVE GORDON
(248) 948 0101
sgordon@signatureassociates.com

SIGNATURE ASSOCIATES
One Towne Square, Suite 1200
Southfield, MI 48076
www.signatureassociates.com

28188-28196 Schoolcraft, Unit #28190- Livonia, Michigan

Hi-Tech/Retail For Lease

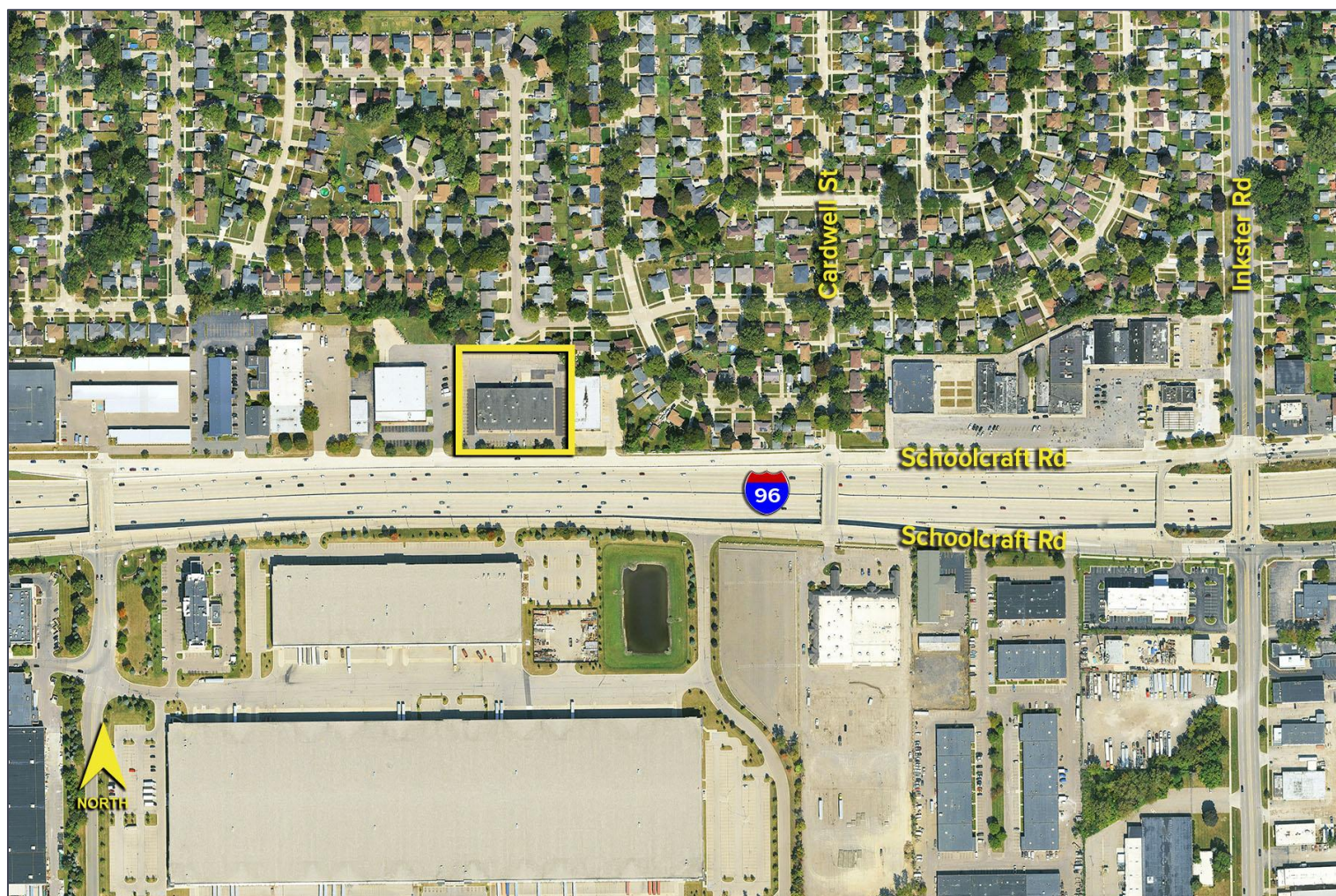
3,939
Square Feet
AVAILABLE

DEMOGRAPHICS

	POPULATION	MED. HH INCOME
1 MILE	9,088	\$87,214
3 MILE	94,609	\$77,368
5 MILE	284,437	\$69,993

TRAFFIC COUNTS (TWO-WAY)

25,519	Inkster Rd. N of Schoolcraft Rd.
31,771	Inkster Rd. S of Schoolcraft Rd.
31,590	Schoolcraft Rd. E of Inkster Rd.
29,882	Schoolcraft Rd. W of Inkster Rd.



For more information, please contact:

GARY SALLEN

(248) 948 0105

gsallen@signatureassociates.com

STEVE GORDON

(248) 948 0101

sgordon@signatureassociates.com

SIGNATURE ASSOCIATES

One Towne Square, Suite 1200

Southfield, MI 48076

www.signatureassociates.com