



Contact Brokers

Jon Quick

Senior Vice President
+1 707 863 8359
jon.quick@colliers.com
CA Lic. 01242750

Phil Garrett, SIOR

Executive Vice President
+1 707 372 1036
phil.garrett@colliers.com
CA Lic. 00844836

380 Chadbourne Rd., Suite D
Fairfield, CA 94534
www.colliers.com

±2.25 Acres For Sale

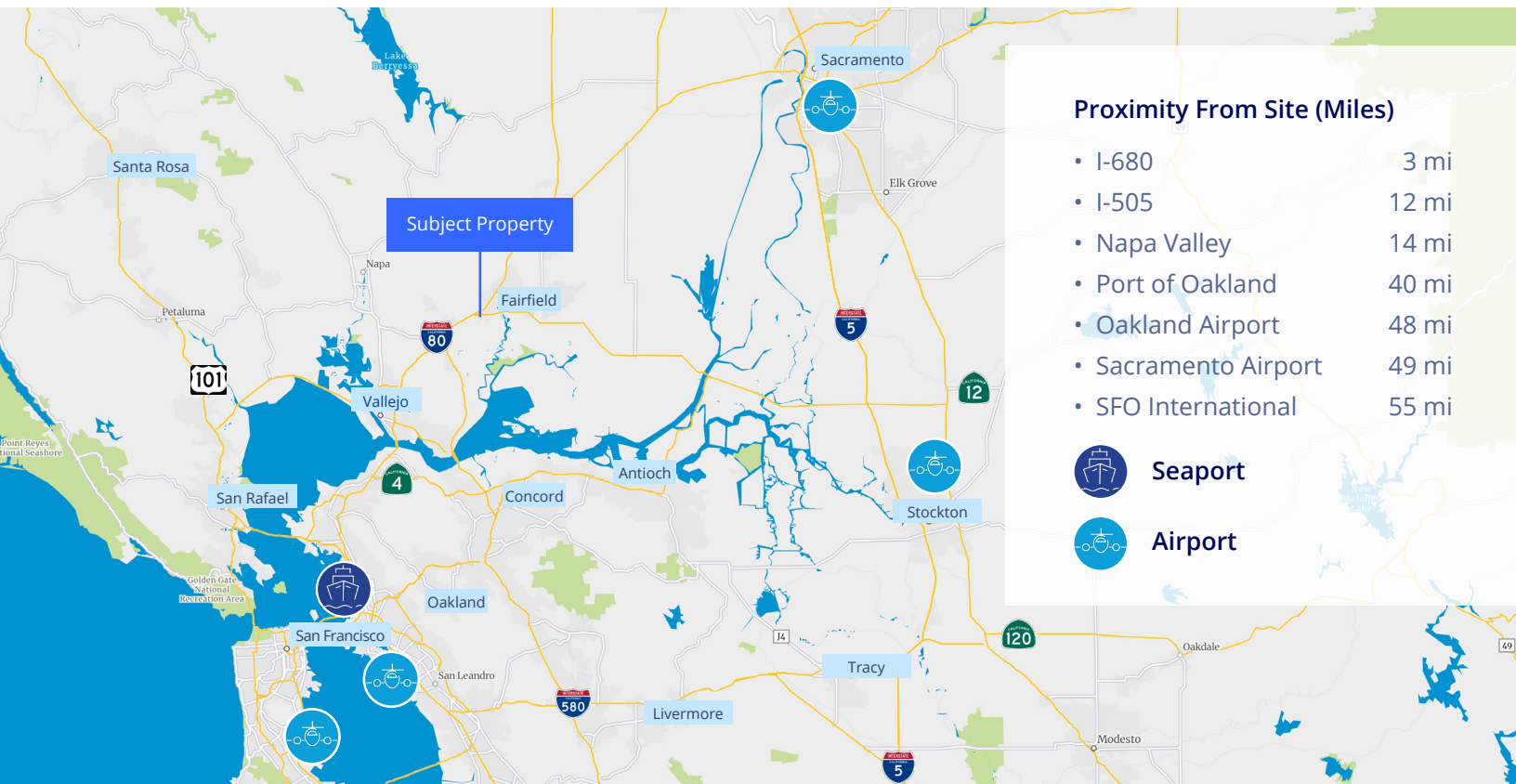
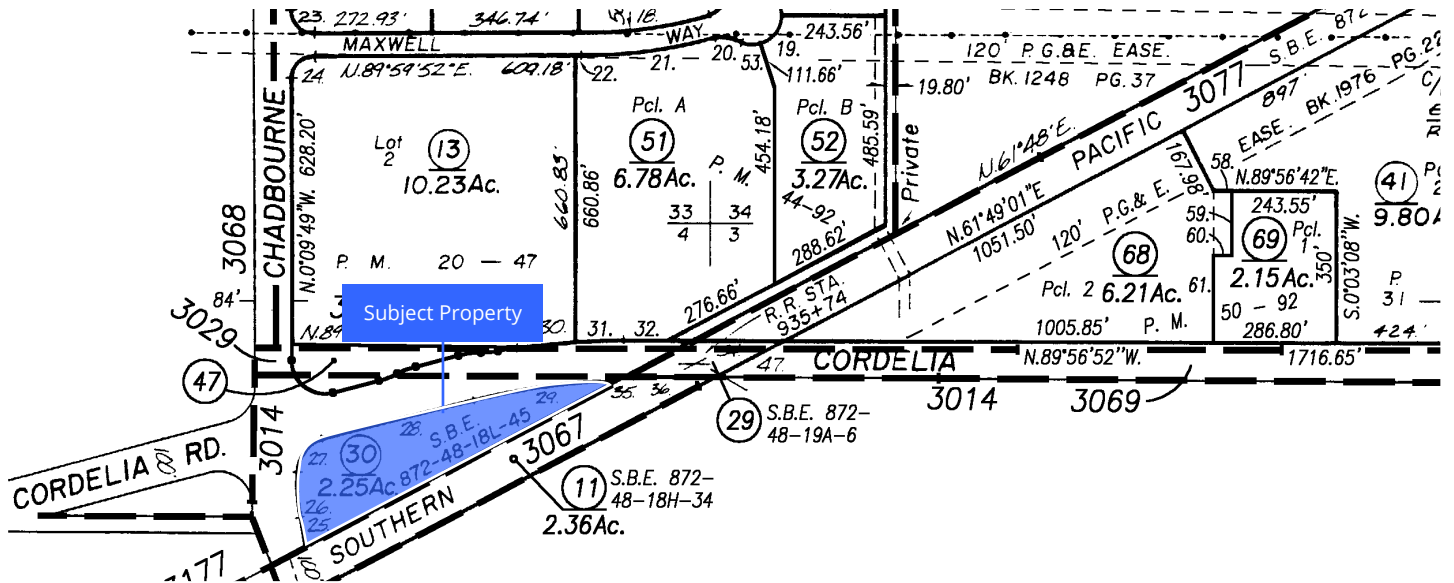
Cordelia Road at Chadbourne Road | Fairfield, CA

Property Overview

- Excellent freeway access - less than one mile from Hwy. 12 / I-80
- Access: Chadbourne Road / Cordelia Road
- Zoning: Limited Industrial (IL) - City of Fairfield (*pursuant to general plan update 12/03/2024*)
- Dimensions: ±936' along Southern Pacific Rail x ±224' along Chadbourne Road (irregular)
- APN: 0028-230-300
- Utilities:
 - 12" water - Cordelia Road @ Chadbourne Road
 - 30" sewer - Cordelia Road
 - 15" sewer - Cordelia Road @ Chadbourne Road
 - 12" and 48" storm drain - Cordelia Road @ Chadbourne Road
- Sale Price: Contact Brokers

For Sale
±2.25 AC

Cordelia Road at Chadbourne Road | Fairfield, CA



Contact Brokers

Jon Quick
Senior Vice President
+1 707 863 8359
jon.quick@colliers.com
CA Lic. 01242750

Phil Garrett, SIOR
Executive Vice President
+1 707 372 1036
phil.garrett@colliers.com
CA Lic. 00844836

380 Chadbourne Rd., Suite D
Fairfield, CA 94534
www.colliers.com