

# Bentonville Office

3401 SE Macy Rd | Bentonville, AR



FOR SUBLEASE



## PROPERTY HIGHLIGHTS

- 11,242 +/- SF available for sublease
- \$16.00/SF Modified Gross
- Walton signage opportunity
- Less than 2 miles from I-49
- Located near SAM'S Club Headquarters and Walmart Home Office

FOR MORE INFORMATION  
PLEASE CONTACT:

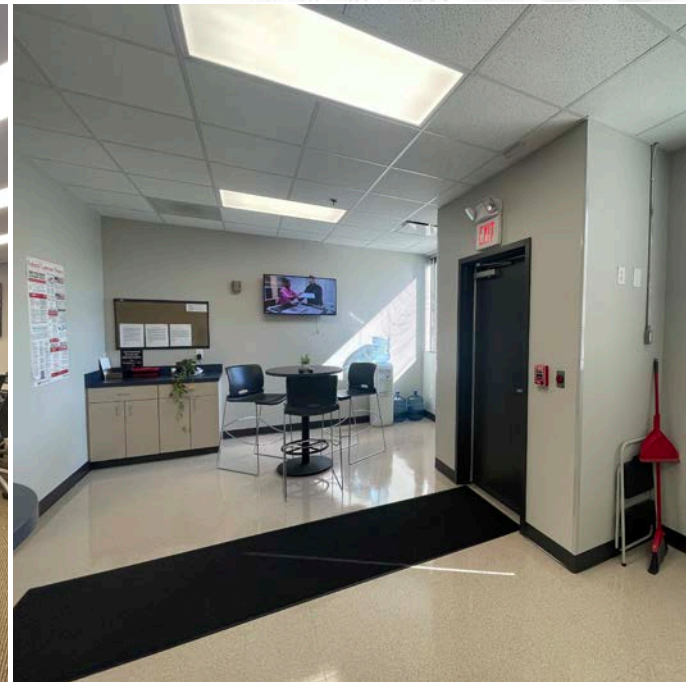
**JOHNNY GALLOWAY**  
jgalloway@sagepartners.com

**SARAH KATE WRAY**  
swray@sagepartners.com

**479 845 3000**  
**sagepartners.com**

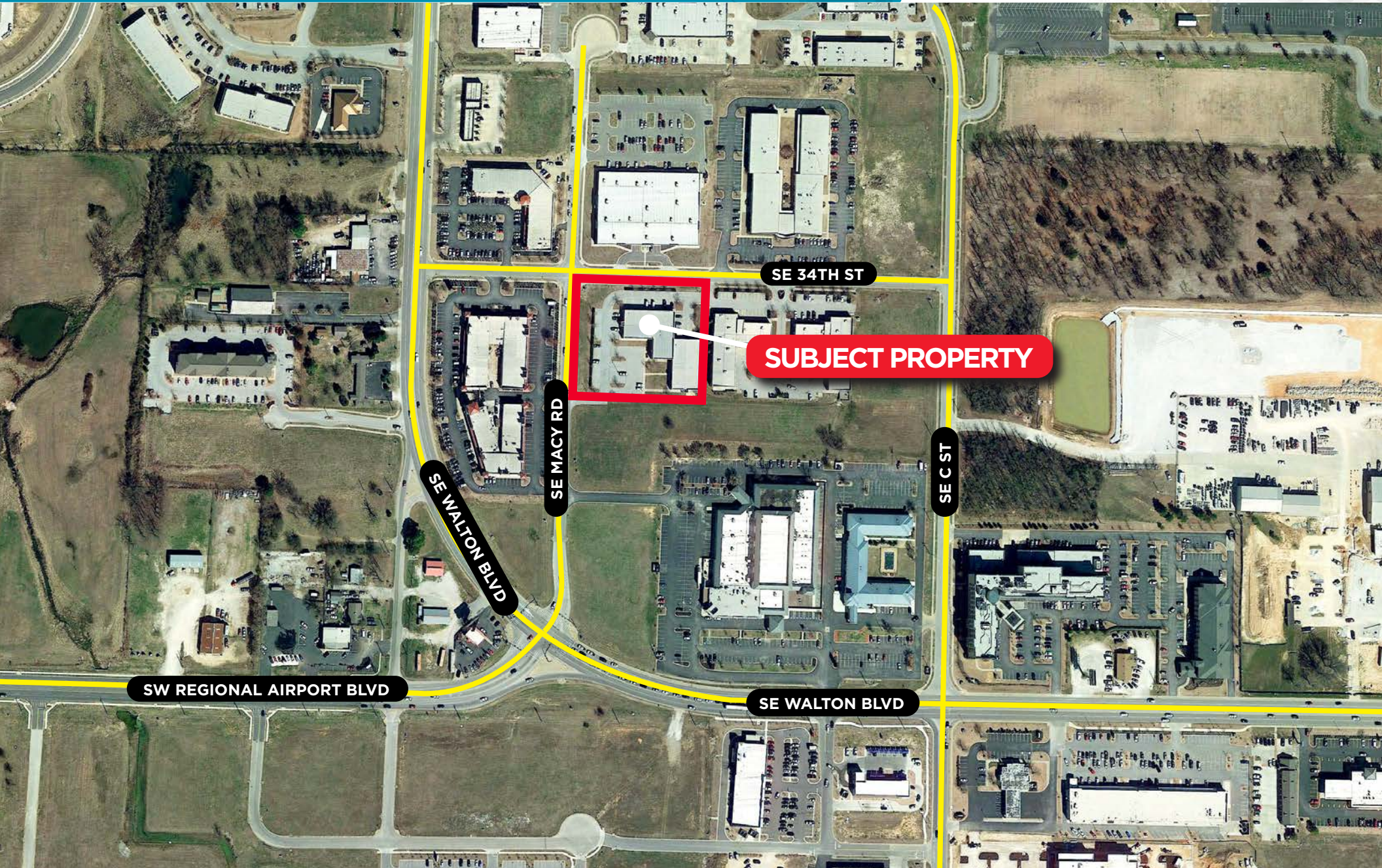
\*information deemed reliable but not guaranteed

# INTERIOR PHOTOS 3401 SE MACY RD | BENTONVILLE, AR



# INTERIOR PHOTOS 3401 SE MACY RD | BENTONVILLE, AR





SE 34TH ST

**SUBJECT PROPERTY**

SE MACY RD

SE WALTON BLVD

SEC ST

SW REGIONAL AIRPORT BLVD

SE WALTON BLVD

